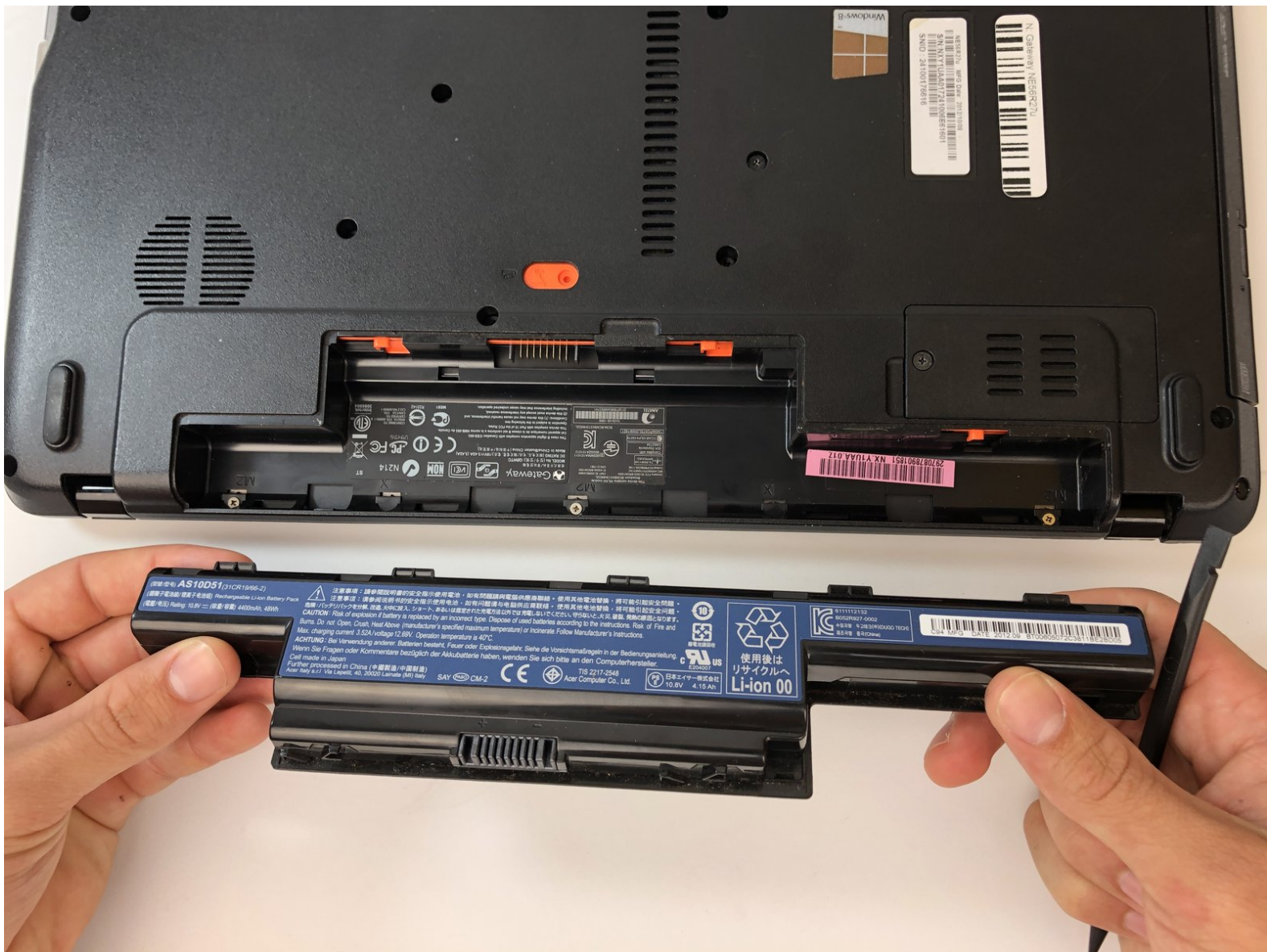




# Gateway NE56R27u Battery Replacement

This guide will provide you with all the simple and easy steps you need to replace your Gateway Laptop's battery.

Written By: Evin Rocha



## INTRODUCTION

Is your Gateway NE56R27u Laptop dying quickly or having trouble charging? It may be time to change that battery. It is recommended that you change the battery for your laptop approximately every two years or when issues arise. This guide will provide you with the quick and easy steps to replace your battery with virtually no hassle. The battery is the most essential component of your laptop in regards to power. If you are experiencing constant lack of battery power or an inability to power on your laptop, the battery may be the issue. All you need is the iFixit plastic spudger and your brand new battery to accomplish this replacement. Take special care when replacing a swollen or disfigured battery.



### TOOLS:

- [Spudger](#) (1)



### PARTS:

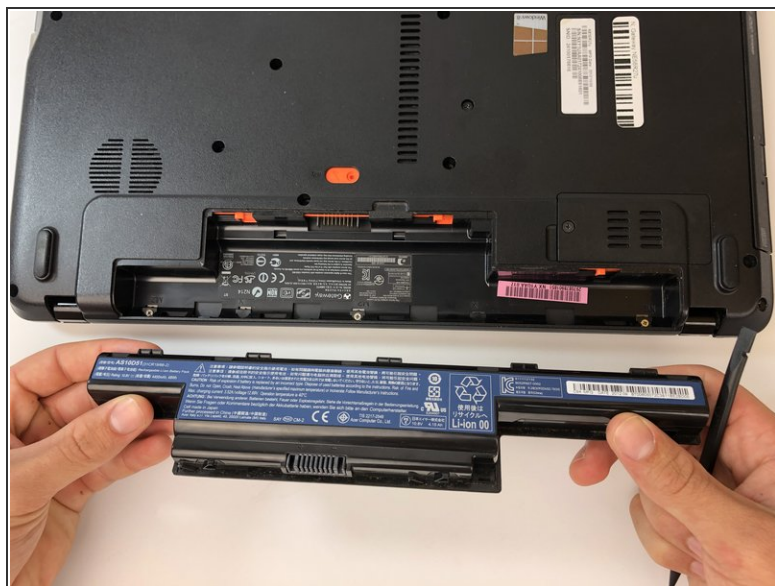
- [New HP 15-ay052nr Battery](#) (1)

## Step 1 — Battery



- Using the spudger, push the orange tab to the unlock position.

## Step 2



- Lift the battery from its compartment.

- ☑ When reinstalling, insert back end of battery first, then clicking into place.



To reassemble your device, follow these instructions in reverse order.