



Parrot Skycontroller 2 Battery Replacement

How to replace the battery in a Skycontroller 2.

Written By: Aaron Collard



INTRODUCTION

If you will be working on your Skycontroller 2, it is imperative that you remove the battery at the start. Also, if your Skycontroller 2 is not powering on or holding a charge, it is necessary to replace the battery. To replace the battery, use this guide.

Before beginning, make sure to power off your device completely and disconnect from any external power source.



TOOLS:

- [Flathead 4 mm Screwdriver](#) (1)
 - [iFixit Opening Tools](#) (1)
-

Step 1 — Battery



- Flip your controller face down.

Step 2



- Remove one 9mm screw using a #4 flathead screwdriver.

Step 3



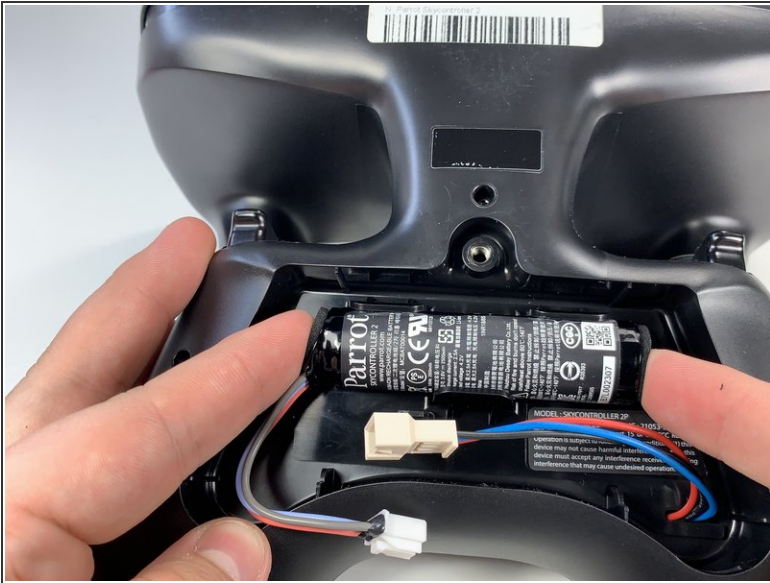
- Insert the plastic opening tool into the top of the cover and pry upwards to lift the battery cover.
- Remove the cover by pulling up and out.

Step 4



- Pull the connectors out by gently pushing the tabs and pulling up on the connector.
- Disconnect the battery from the remote by pressing the white tab and pulling the connectors apart.

Step 5



- Remove the battery from its brackets by pulling up on the ends of the battery.

To reassemble your device, follow these instructions in reverse order.