



InFocus IN3104 Top Cover Replacement

How to replace the top cover of the InFocus IN3104 projector.

Written By: Tae Min Kim



INTRODUCTION

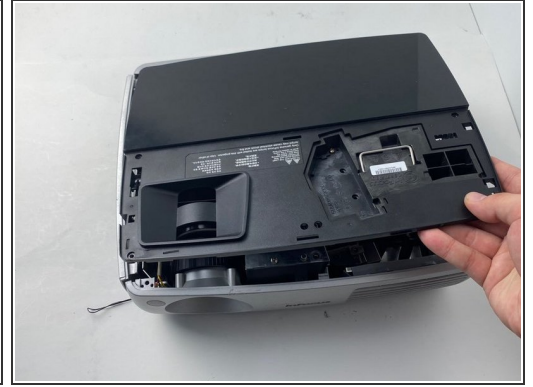
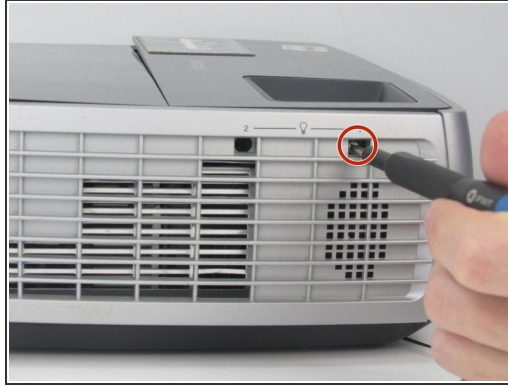
Follow these instructions if you need to do a top cover replacement or open up the InFocus IN3104 projector. In the event that the top cover of the InFocus IN3104 becomes dented or cracked, it must be changed to prevent further damage to the machine. Follow the instructions carefully to avoid damaging the wire that connects to the motherboard.



TOOLS:

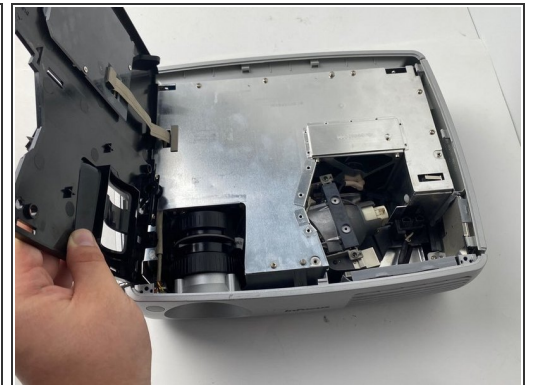
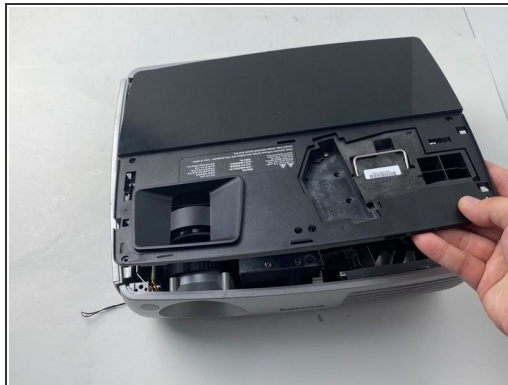
- [Magnetic Project Mat](#) (1)
 - [Phillips #1 Screwdriver](#) (1)
-

Step 1 — Top Cover



- Turn the projector so that the lens is facing you.
- i** On the left side of the projector, there is a screw and a knob inside of the small grate.
- Use a Phillips #1 screwdriver to remove the 6 mm screw that secures top cover.
- Remove the service cover.

Step 2



- Use a Phillips #1 screwdriver to remove the seven 6 mm screws.
 - Use a Phillips #1 screwdriver to remove the two 5 mm screws.
 - Remove the top cover.
- ⚠ Do not pull the cover too hard. It may damage the wire that is connected to the motherboard.**

To reassemble your device, follow these instructions in reverse order.