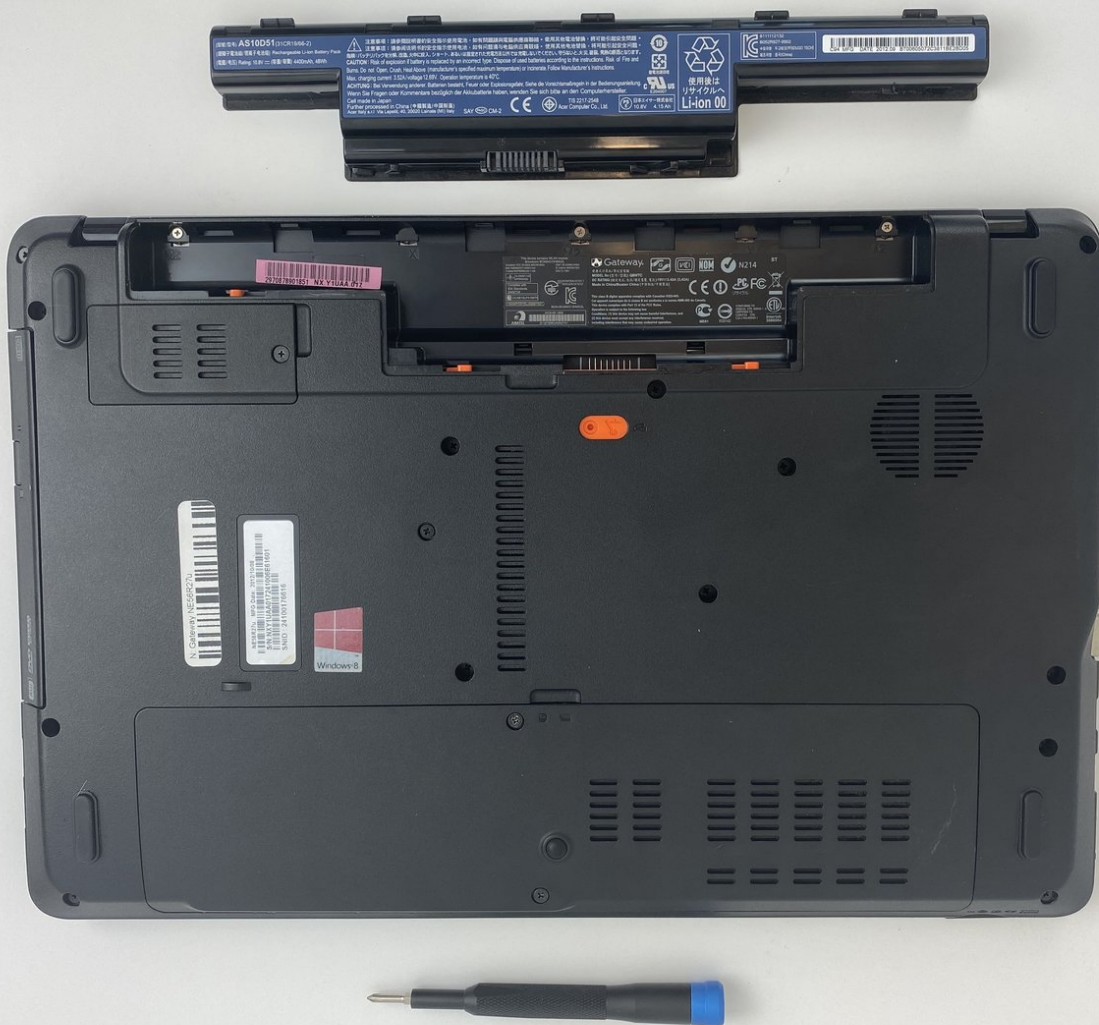




Gateway NE56R27u Hard Drive Replacement

This guide will give step-by-step instructions on how to replace your device's hard drive.

Written By: Piper Moeller



INTRODUCTION

The hard drive is how you store data in your device. If you have experienced a hardware failure or you simply want to upgrade your Gateway NE56R27u's hard drive, this guide will allow you to replace your laptop's hard drive. Upgrading your hard drive can allow your device to run with increased speed and capacity and with more space to store files.



TOOLS:

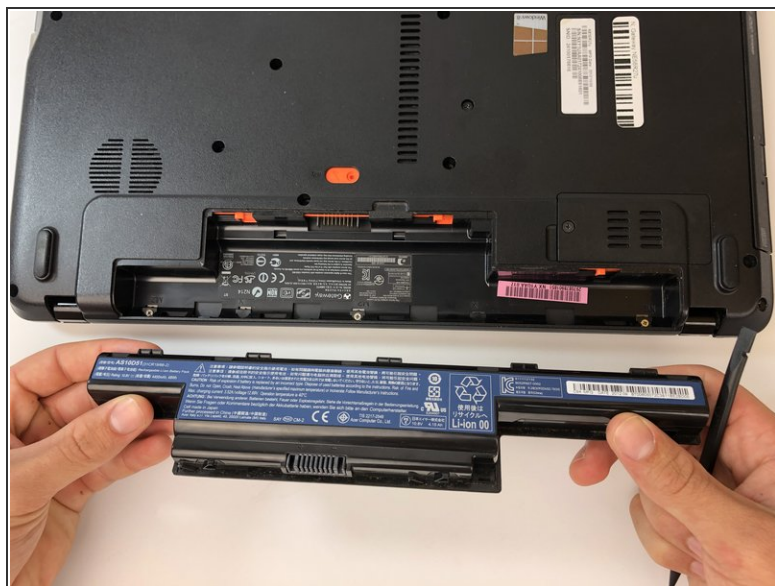
- [Spudger](#) (1)
 - [Phillips #0 Screwdriver](#) (1)
-

Step 1 — Battery



- Using the spudger, push the orange tab to the unlock position.

Step 2



- Lift the battery from its compartment.

- ☑ When reinstalling, insert back end of battery first, then clicking into place.

Step 3 — Hard Drive



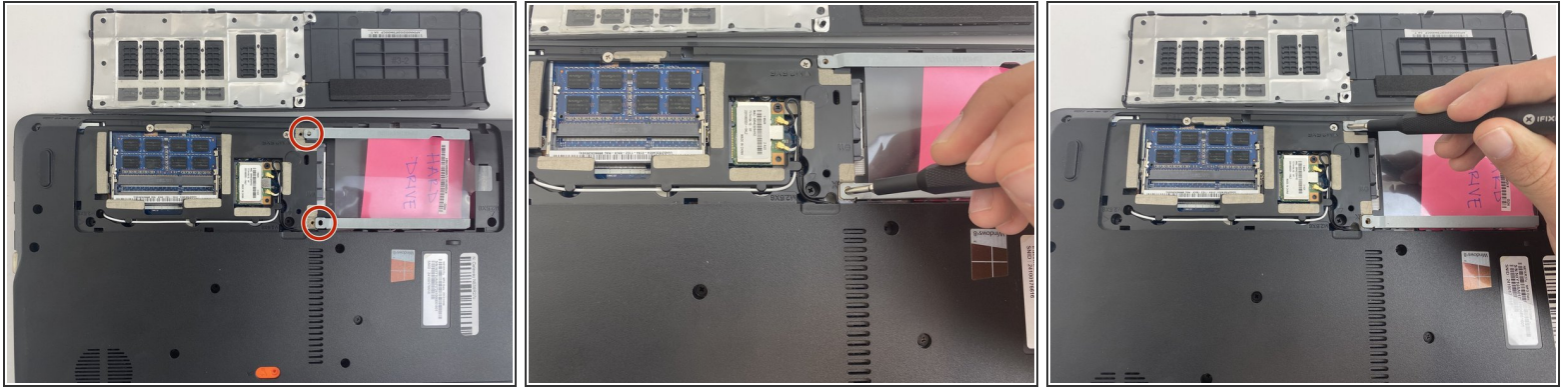
- Unscrew the two 7.9mm Phillips #0 screws that secure the service cover.

Step 4



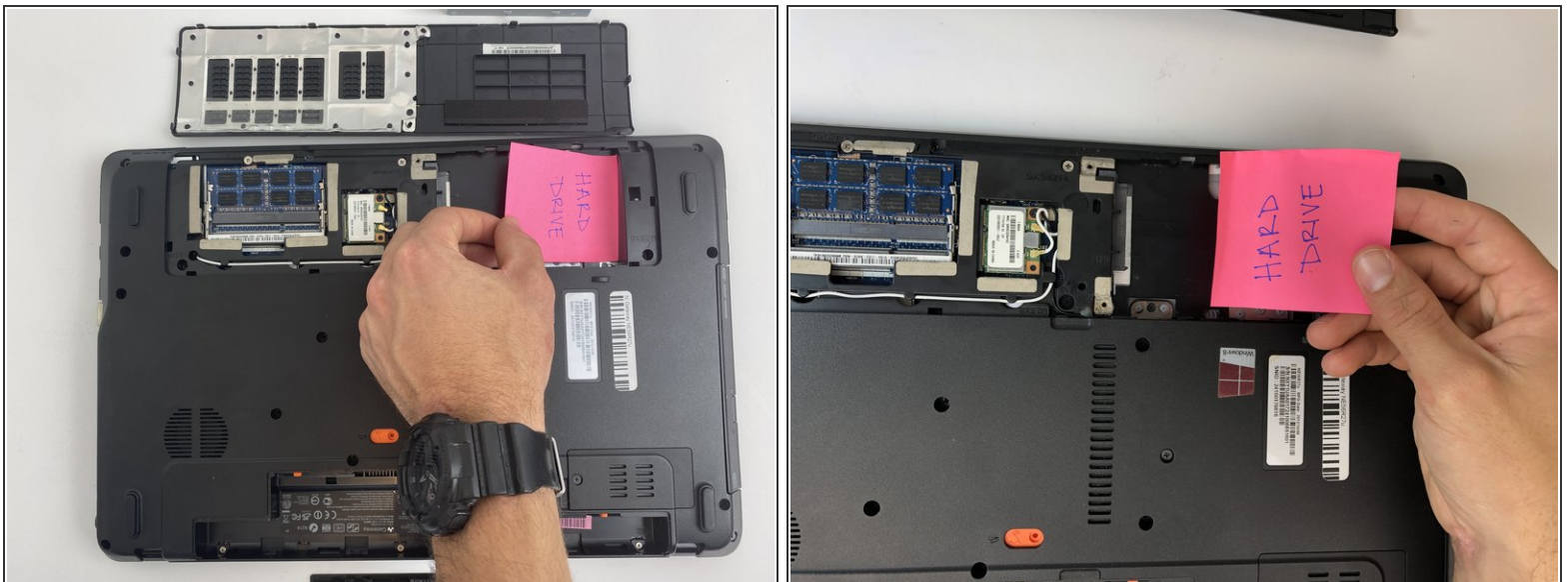
- Use the opening tool to gently pry open the compartment covering.

Step 5



- Unscrew the two 0.5mm screws from the hard drive brackets using the Phillips #0 screwdriver.
- Pull the plastic tab attached to the hard drive to the right to remove the hard drive.
- ❗ The hard drive plugs into the port on the left within the compartment. Be sure to gently remove the hard drive without damaging the port.

Step 6



- Remove the hard drive by lifting up the right side, releasing the hard drive from the compartment clips on the left.

To reassemble your device, follow these instructions in reverse order.