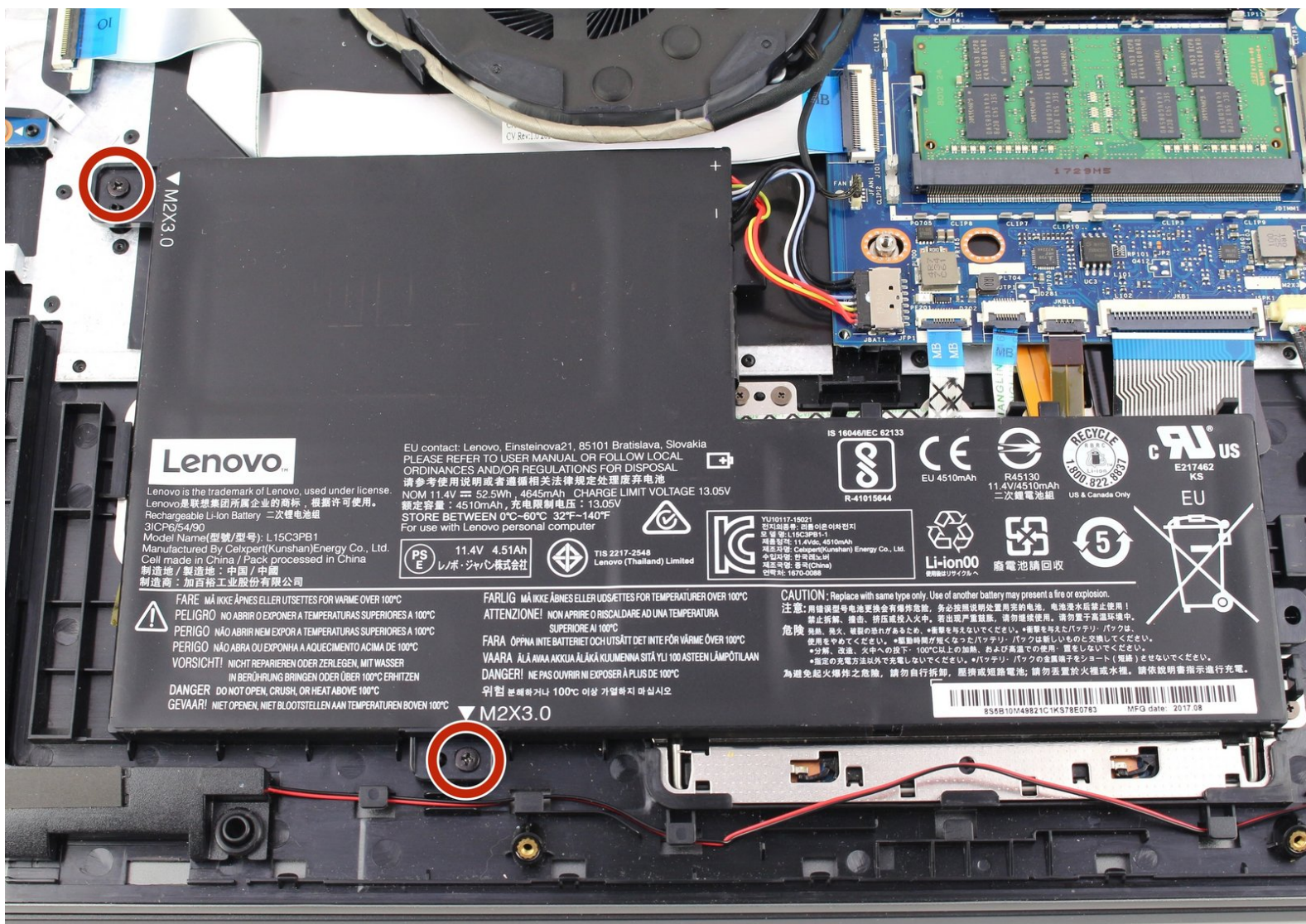




# Lenovo IdeaPad Flex 5-1570 Battery Replacement

A faulty battery in the Lenovo IdeaPad Flex 5-1570 may result in an unusable device. This guide will show you how to successfully replace the battery.

Written By: Nate Blake



## INTRODUCTION

Laptop batteries can become faulty in as little as 2 years. Having a working battery is an essential piece to an efficient laptop, as the main function of the laptop is to be able to work away from home. Laptops with short battery lives can be extremely tedious as you constantly need to be plugging them in to an outlet.

If you have had your Lenovo IdeaPad Flex 5-1570 for longer than 2 years and/or you are experiencing a short battery life, it may be time to replace your battery. Do not worry however, replacing the battery in this device is simple and requires little to no tools.

For your safety, discharge your battery below 25% before disassembling your device. This reduces the risk of a dangerous thermal event if the battery is accidentally damaged during the repair. If your battery is swollen, [take appropriate precautions](#).



### TOOLS:

- [iFixit Opening Tools](#) (1)
- [Phillips #00 Screwdriver](#) (1)



### PARTS:

- [Lenovo Flex 5-1570 Replacement Battery](#) (1)

## Step 1 — Back Panel



- Remove the ten 5 mm Phillips #00 screws that are holding the back panel on.

## Step 2



- Use a spudger to pry open the back case at the two hinge cutouts.
- Gently use the plastic opening tool around the edges of the laptop to pry up the clips holding the rest of the back panel.

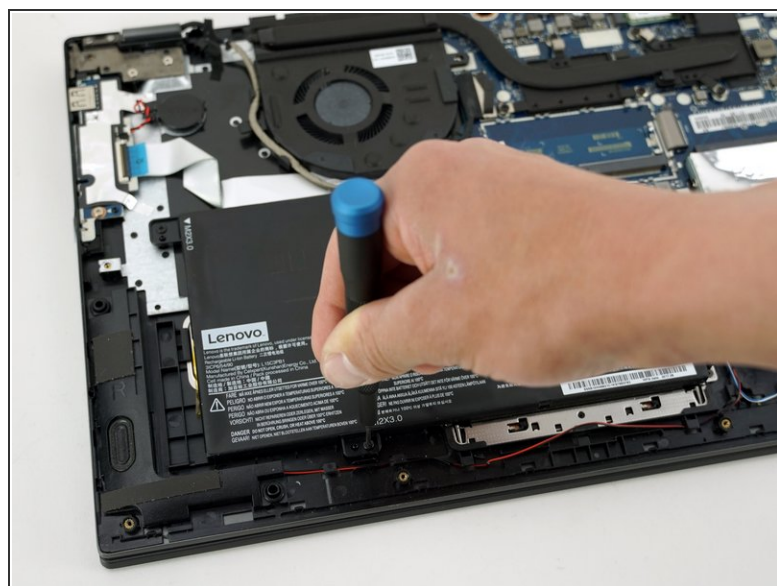


## Step 3



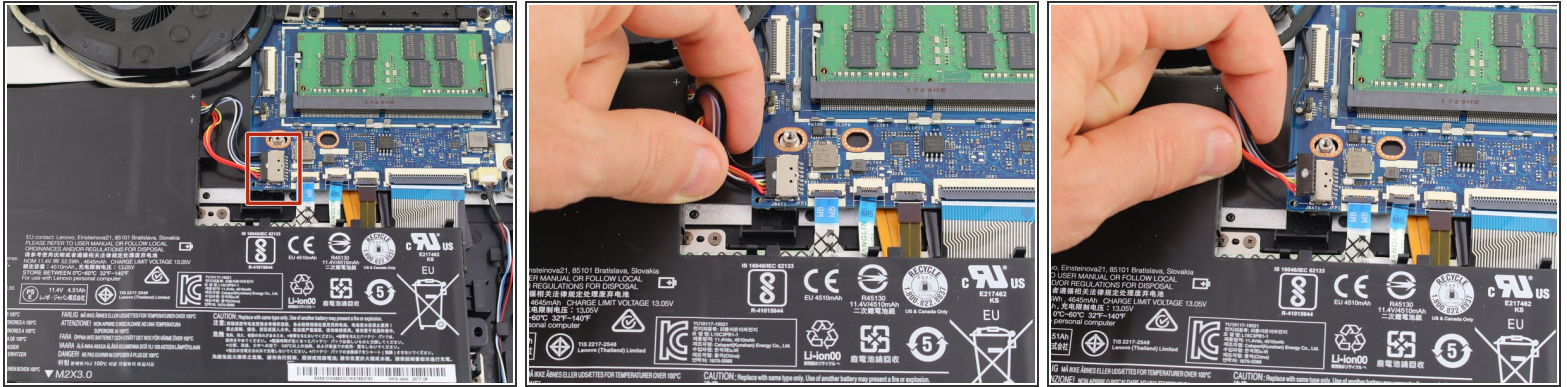
- Once all the clips have been disengaged, lift off the back cover.

## Step 4 — Battery



- Remove the two 5 mm Phillips #00 screws that secure the battery in place.

## Step 5



- Using your fingers, grasp the entire bundle of wires to pull the battery cable from its connector. This will cut off power to the motherboard.
- ⚠ Be sure to apply even pressure across the wires and connector to not damage the battery cable.
- Remove the battery from the device.

To reassemble your device, follow these instructions in reverse order.

Take your e-waste to an [R2 or e-Stewards certified recycler](#).

For optimal performance, after completing this guide, [calibrate your newly installed battery](#).