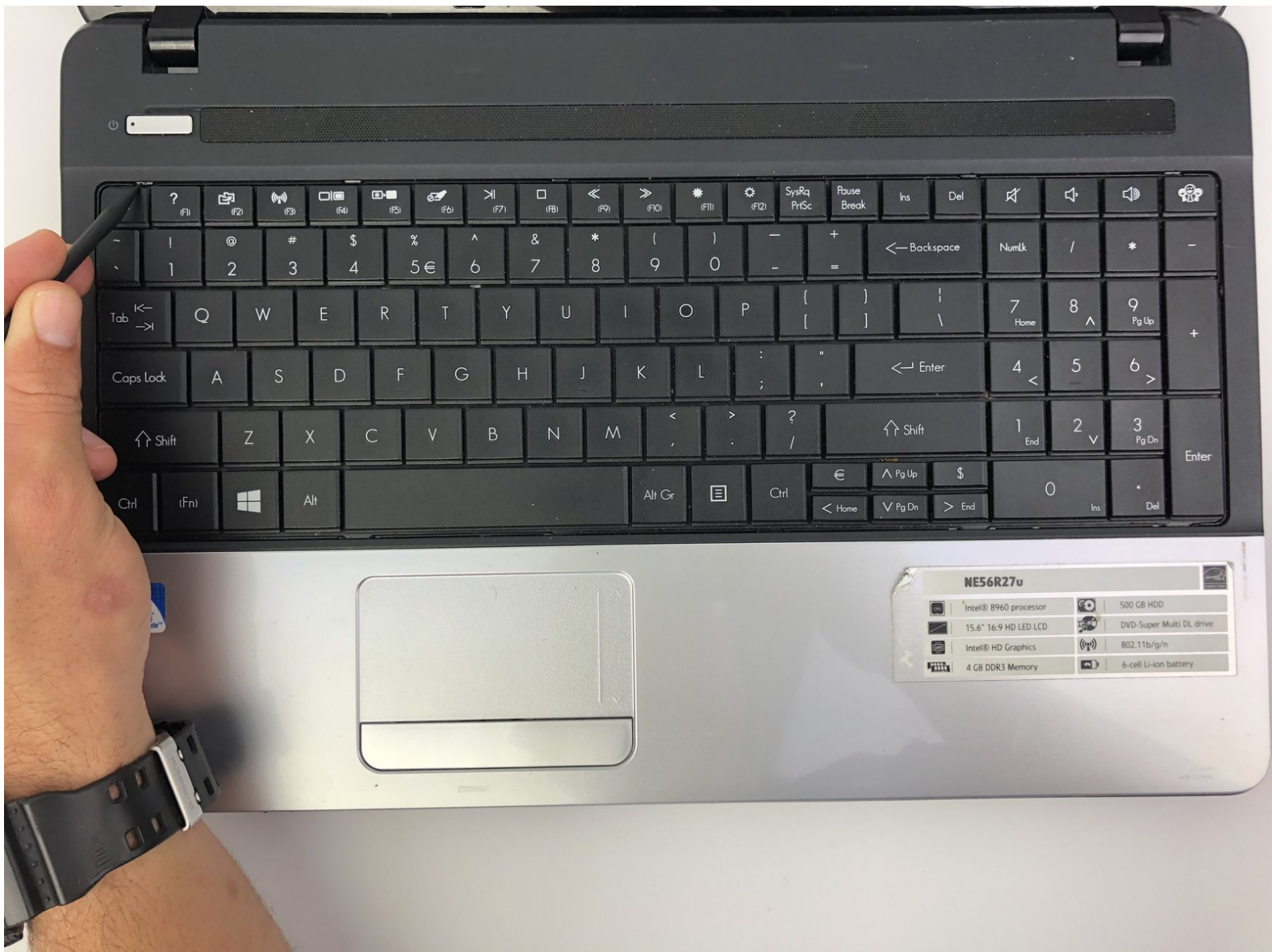




Gateway NE56R27u Keyboard Replacement

This step-by-step guide will allow you to replace the keyboard of your Gateway NE56R27u laptop.

Written By: Piper Moeller



INTRODUCTION

The main functionality of your Gateway NE56R27u depends on your ability to use the keyboard. Thus, if you find that your Gateway laptop is not typing properly, certain buttons no longer work, or you now have a short circuit due to damage, replacing your keyboard might resolve such issues. This will allow for a faster and easier operation of your device.



TOOLS:

- [Spudger](#) (1)
- [iFixit Opening Picks set of 6](#) (1)
- [Philips Head Screwdriver: Sized J000](#) (1)



PARTS:

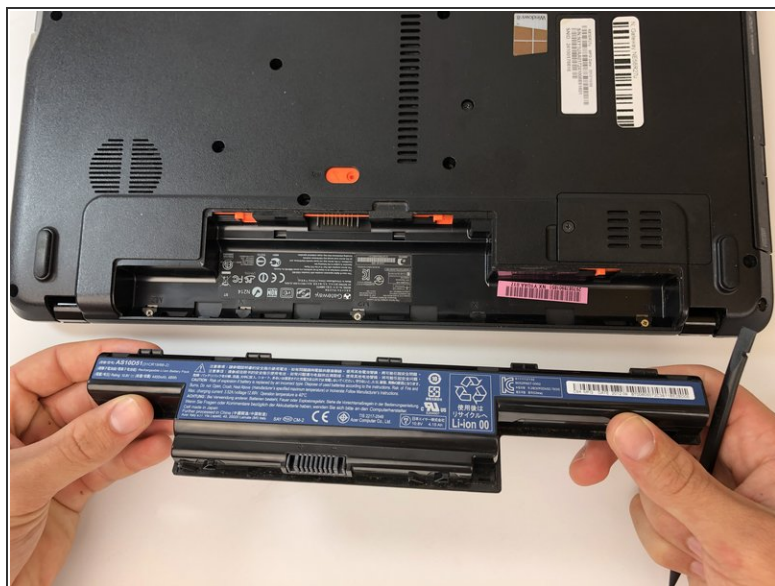
- [Gateway NE56R27u keyboard](#) (1)

Step 1 — Battery



- Using the spudger, push the orange tab to the unlock position.

Step 2



- Lift the battery from its compartment.

☑ When reinstalling, insert back end of battery first, then clicking into place.

Step 3 — Hard Drive



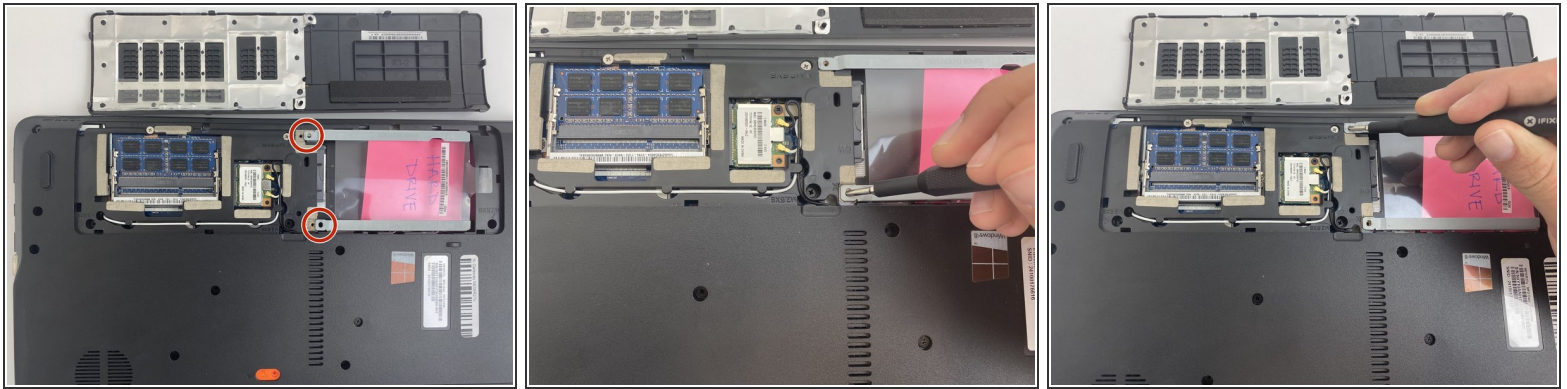
- Unscrew the two 7.9mm Phillips #0 screws that secure the service cover.

Step 4



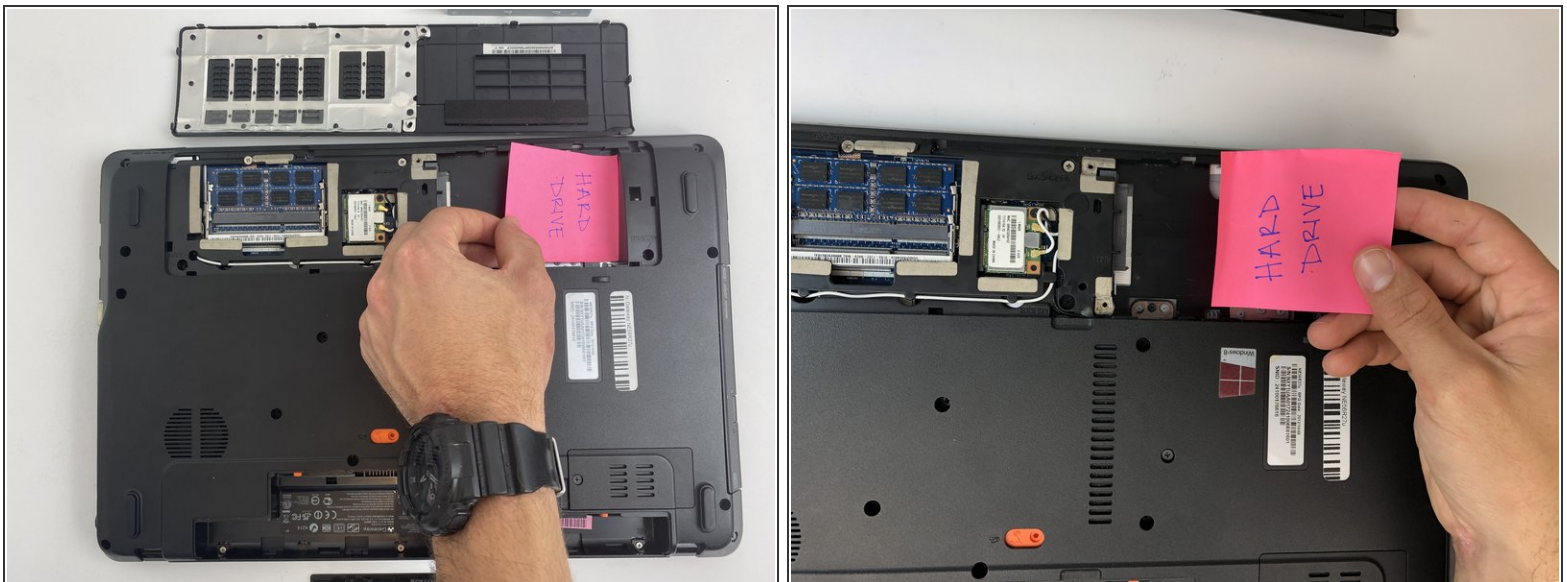
- Use the opening tool to gently pry open the compartment covering.

Step 5



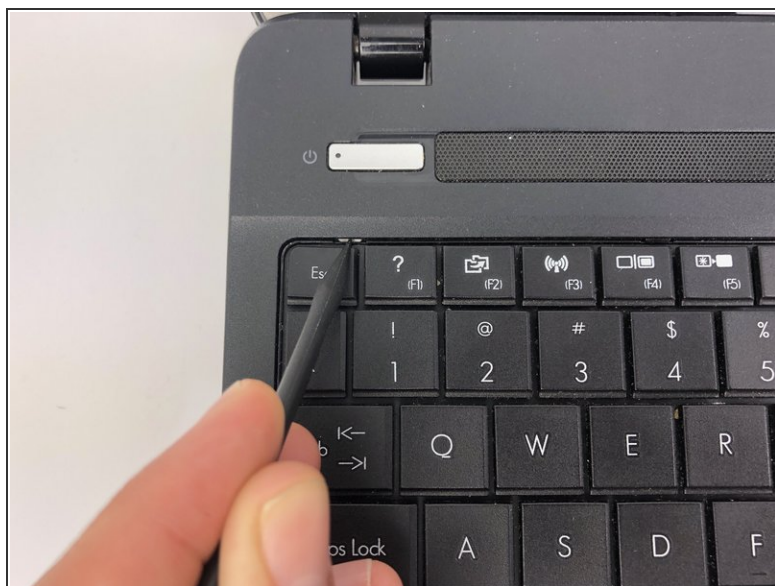
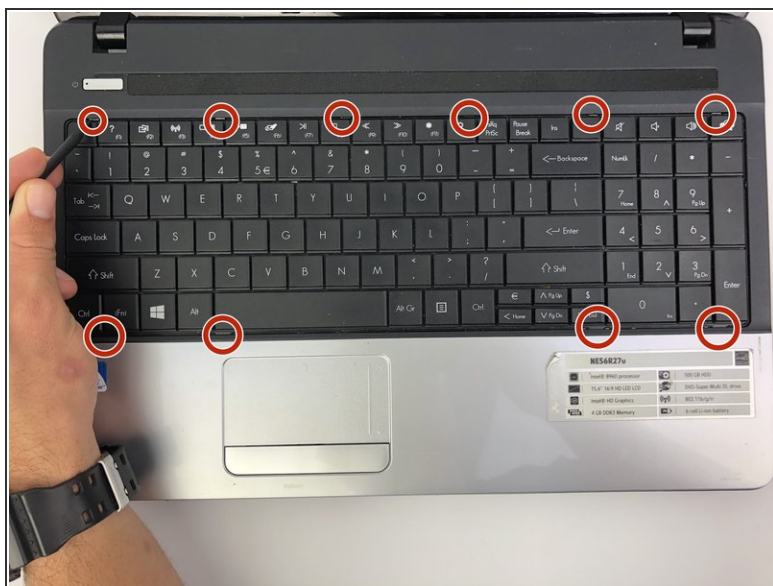
- Unscrew the two 0.5mm screws from the hard drive brackets using the Phillips #0 screwdriver.
- Pull the plastic tab attached to the hard drive to the right to remove the hard drive.
- ❗ The hard drive plugs into the port on the left within the compartment. Be sure to gently remove the hard drive without damaging the port.

Step 6



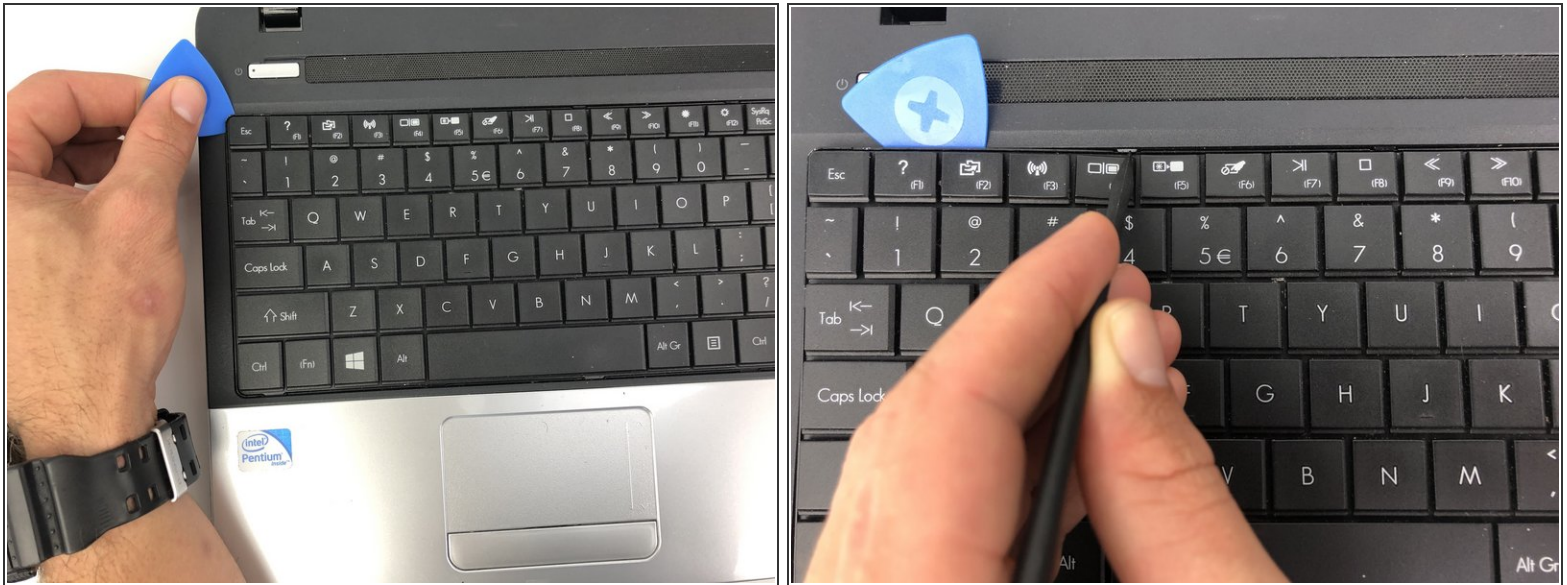
- Remove the hard drive by lifting up the right side, releasing the hard drive from the compartment clips on the left.

Step 7 — Keyboard



- Flip your laptop over to view the keyboard.
- Using the spudger, push in the ten tabs at the edges of the keyboard.

Step 8



- Using the opening pick, lift the edges of the keyboard.
- Repeat around the edges of the device.
- Lift up the keyboard to expose the cables underneath.

Step 9



- Release the clamp holding the mini-DIN cord by lifting the two black tabs on either side.
- Gently pull the mini-DIN cord out of the clamp.
- Remove the keyboard.

To reassemble your device, follow these instructions in reverse order.