



Yuneec ST10 Plus Camera Switch Replacement

On the Yuneec ST10 Plus, the camera button can stop working. Follow this guide on how to replace it.

Written By: Joshua Collins



INTRODUCTION

This guide will provide a step by step process to the removal and replacement of the shoulder buttons controlling the camera or video on the Yuneec ST10 Plus drone controller. The lefthand switch triggers the drone camera to take a snapshot and the righthand switch toggles the recording feature. If either of these functionalities stop working and you've troubleshot the problem to the physical switches, this guide can help you to replace the malfunctioning button and resume the functionality of the remote.

Good news: the two switches are connected with cable connectors, so no soldering will be required to replace them!

TOOLS:

- [Cutting Plier](#) (1)
 - [Nylon Tipped Tweezers](#) (1)
 - [4 mm Hex Key](#) (1)
 - [5 mm Hex Key](#) (1)
-

Step 1 — Battery



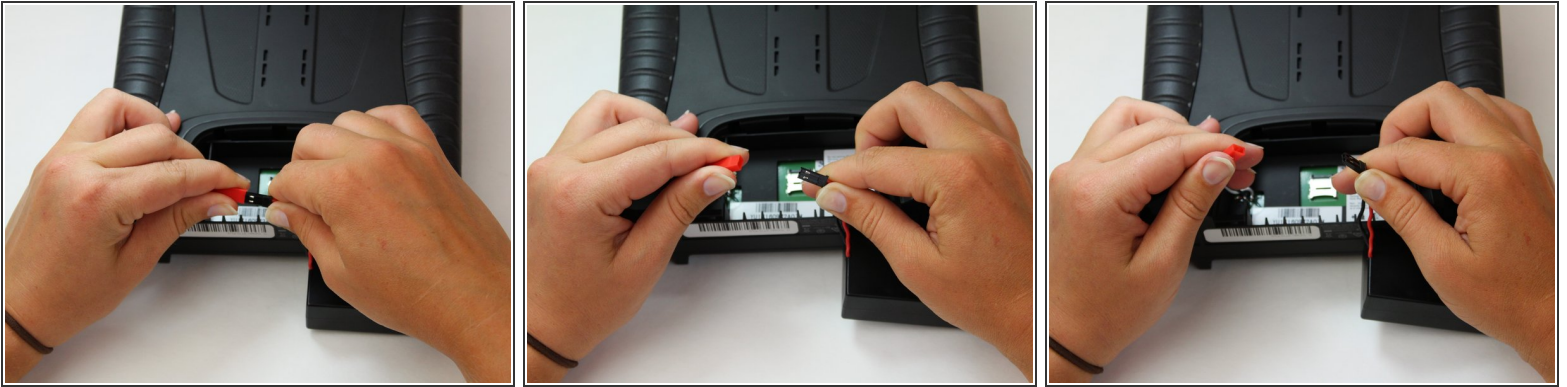
- Flip the controller upside down to access the battery compartment.
- Grab the compartment door and pull down.

Step 2



- Gently lift the blue tab connected to the battery in order to remove the battery from its housing.

Step 3



- To disconnect the battery from the remote, grab the red and black connectors.
- Pull gently on connectors until they disconnect.

Step 4 — Camera Switch



- Grab ahold of the top of the black cap on the button with the pliers and pull up forcefully.

Step 5



- Twist counter clockwise on the silver portion of the device with a pair of pliers.

Step 6



- Slide the Jimmy underneath the rubber grips and pry upwards.
- With your free hand grasp the rubber grips and pull upward to remove it.

Step 7



- Remove the six 1.3 cm screws located on the back panel of the remote using the 5.5mm hex screw bit.

Step 8



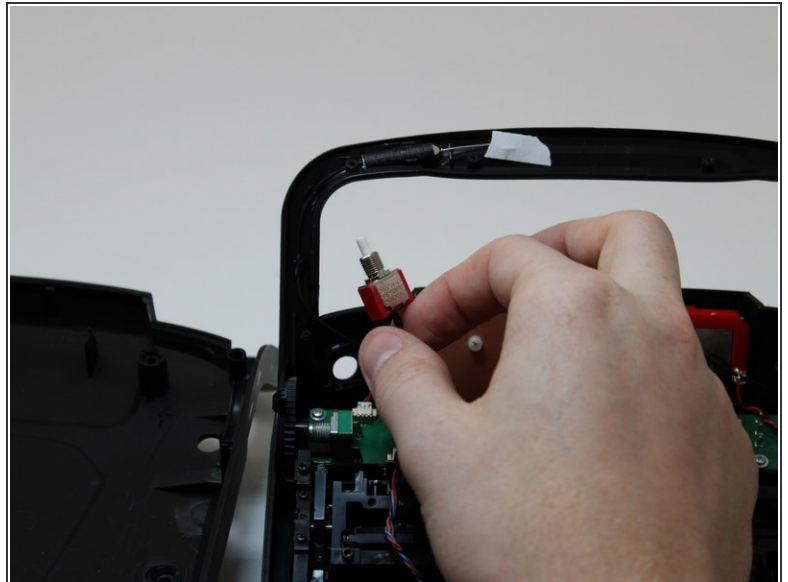
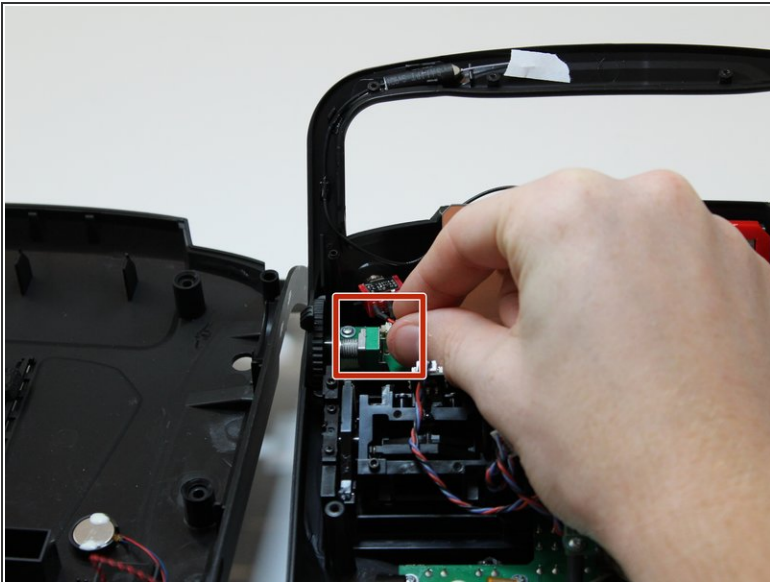
- Remove the four 6mm screws from the handle using the 4mm hex driver bit.

Step 9



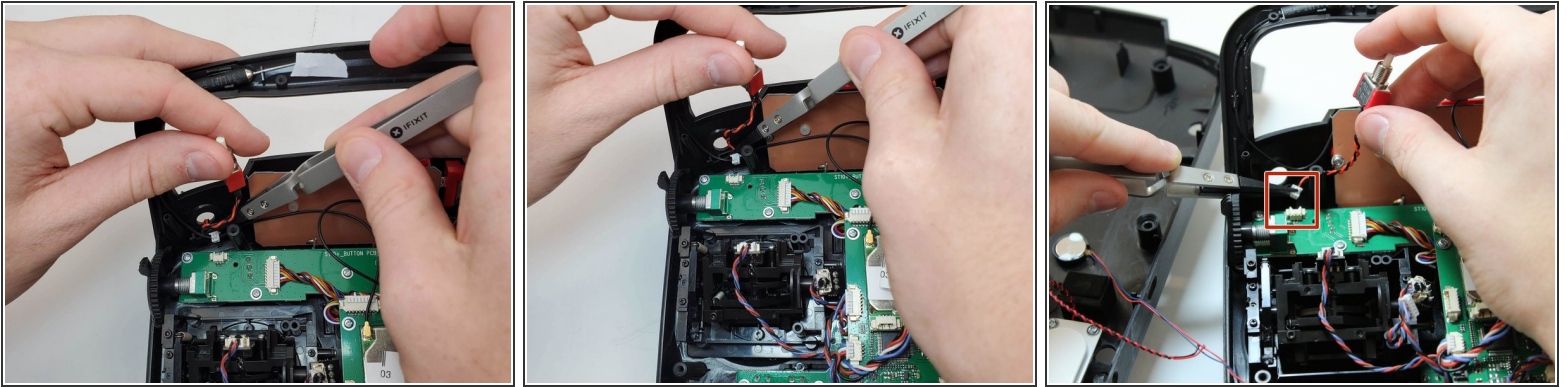
- Carefully pull up and over on the back panel to remove. Take your time because there are wires connecting the two panels that can easily torn.

Step 10



- Flip your device.
- Once the silver cover holding the switch in place is removed, remove the switch by grabbing it and pulling back towards you.

Step 11



- Once the switch is removed, disconnect the switch from the circuit board by pulling the cable from the cable connector.
- ❗ The cable will come out by pulling it away from you if the bottom of the controller is oriented closer to you.

To reassemble your device, follow these instructions in reverse order.