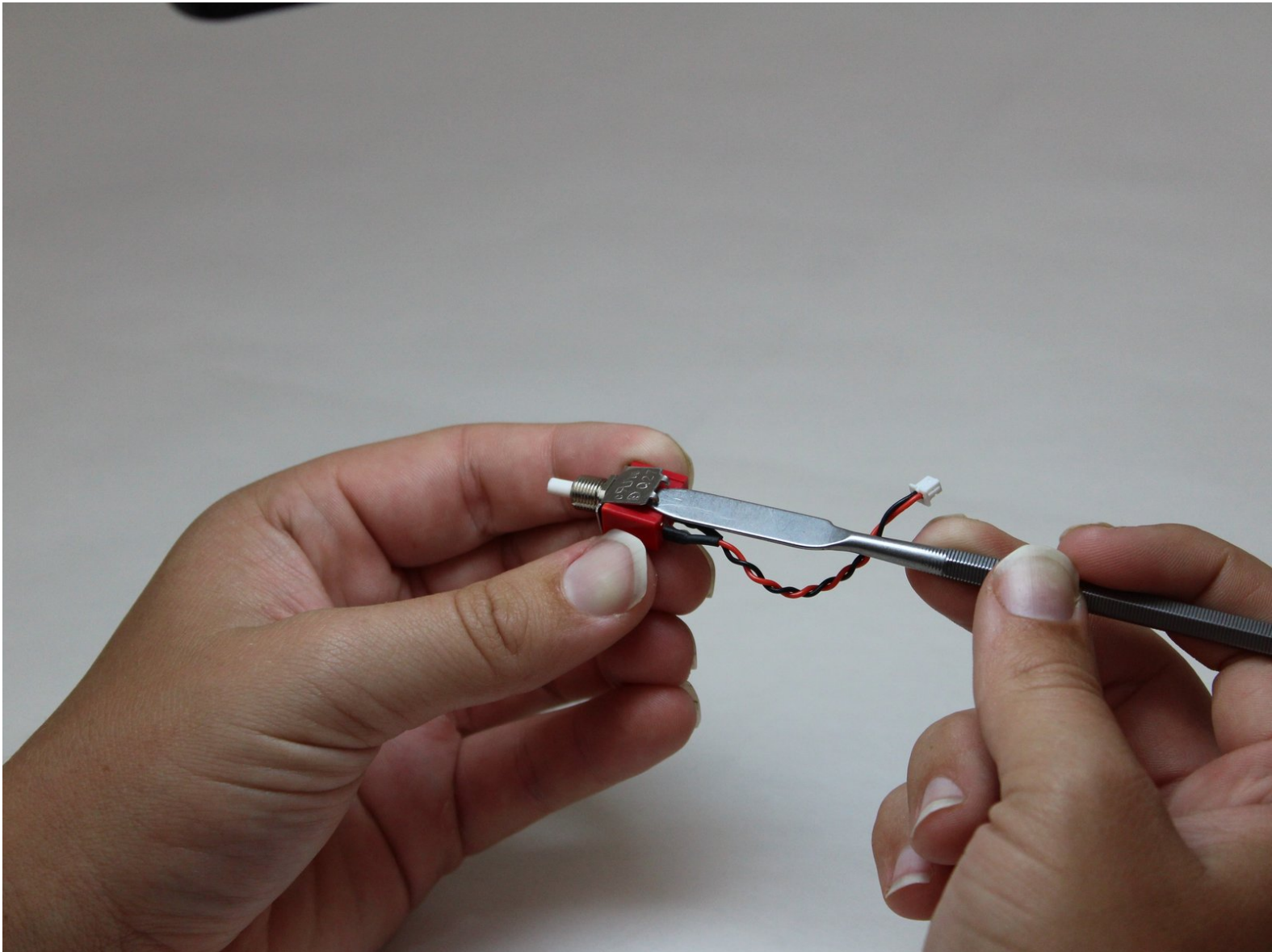




# Yuneec ST10 Plus Camera Switch Spring Replacement

This guide will go into the replacement of the switch spring on the Yuneec ST10 Plus.

Written By: Joshua Collins



## INTRODUCTION

A faulty switch spring can lead to an unresponsive camera button, resulting in your controller not being able to record or take pictures. Cause of this can be dislocated spring, or as simple as the spring snapping over time. Follow these steps to replace the spring for either of the shoulder buttons on the Yuneec ST10 Plus drone controller.



### TOOLS:

- [Cutting Plier](#) (1)
- [Nylon Tipped Tweezers](#) (1)
- [4 mm Hex Key](#) (1)
- [5 mm Hex Key](#) (1)
- [Metal Spudger](#) (1)
- [Tweezers](#) (1)
- [Large Needle Nose Pliers](#) (1)
- [ESD Safe Tweezers Blunt Nose](#) (1)

## Step 1 — Battery



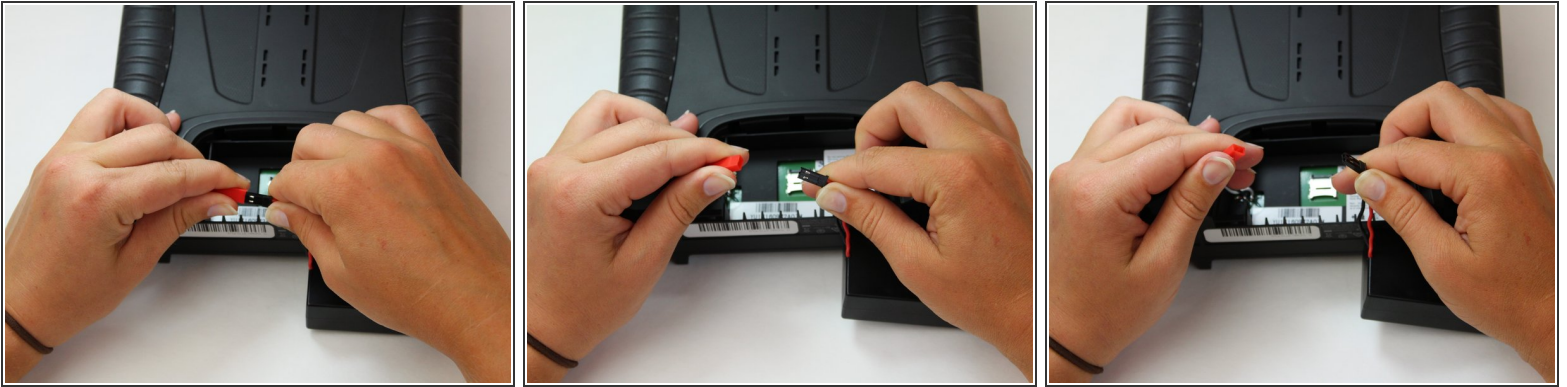
- Flip the controller upside down to access the battery compartment.
- Grab the compartment door and pull down.

## Step 2



- Gently lift the blue tab connected to the battery in order to remove the battery from its housing.

### Step 3



- To disconnect the battery from the remote, grab the red and black connectors.
- Pull gently on connectors until they disconnect.

### Step 4 — Camera Switch



- Grab ahold of the top of the black cap on the button with the pliers and pull up forcefully.



## Step 5



- Twist counter clockwise on the silver portion of the device with a pair of pliers.

## Step 6



- Slide the Jimmy underneath the rubber grips and pry upwards.
- With your free hand grasp the rubber grips and pull upward to remove it.

## Step 7



- Remove the six 1.3 cm screws located on the back panel of the remote using the 5.5mm hex screw bit.

## Step 8



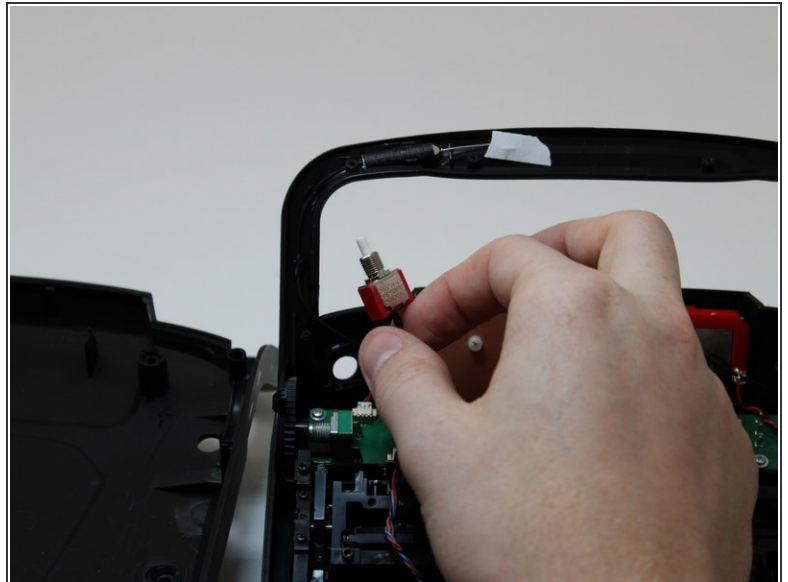
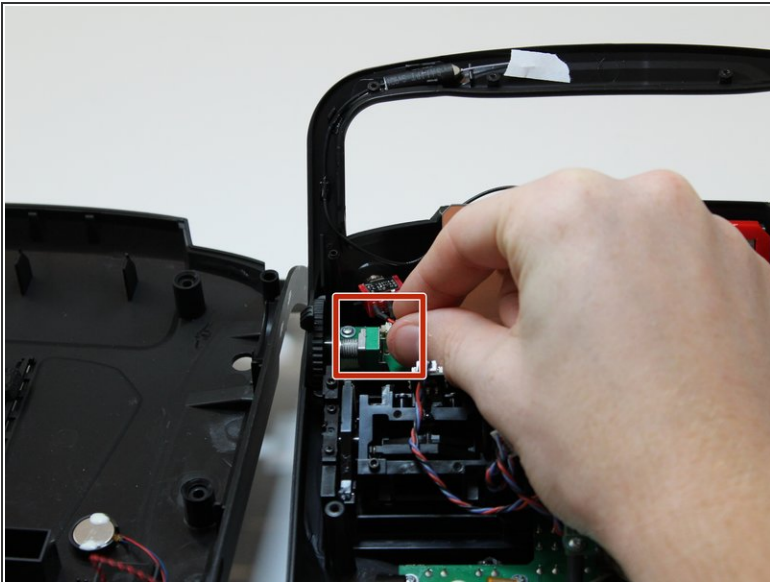
- Remove the four 6mm screws from the handle using the 4mm hex driver bit.

## Step 9



- Carefully pull up and over on the back panel to remove. Take your time because there are wires connecting the two panels that can easily torn.

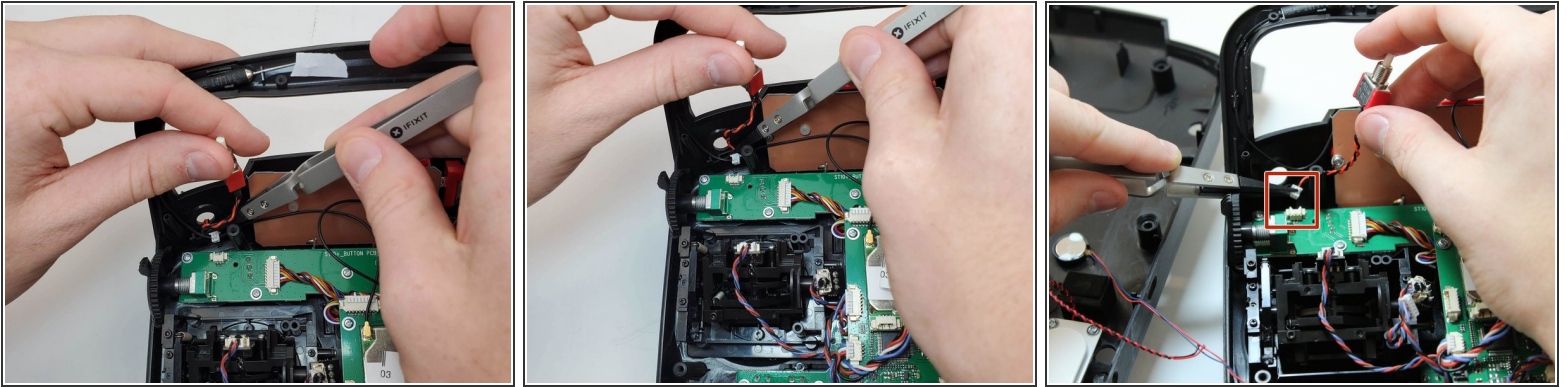
## Step 10



- Flip your device.
- Once the silver cover holding the switch in place is removed, remove the switch by grabbing it and pulling back towards you.

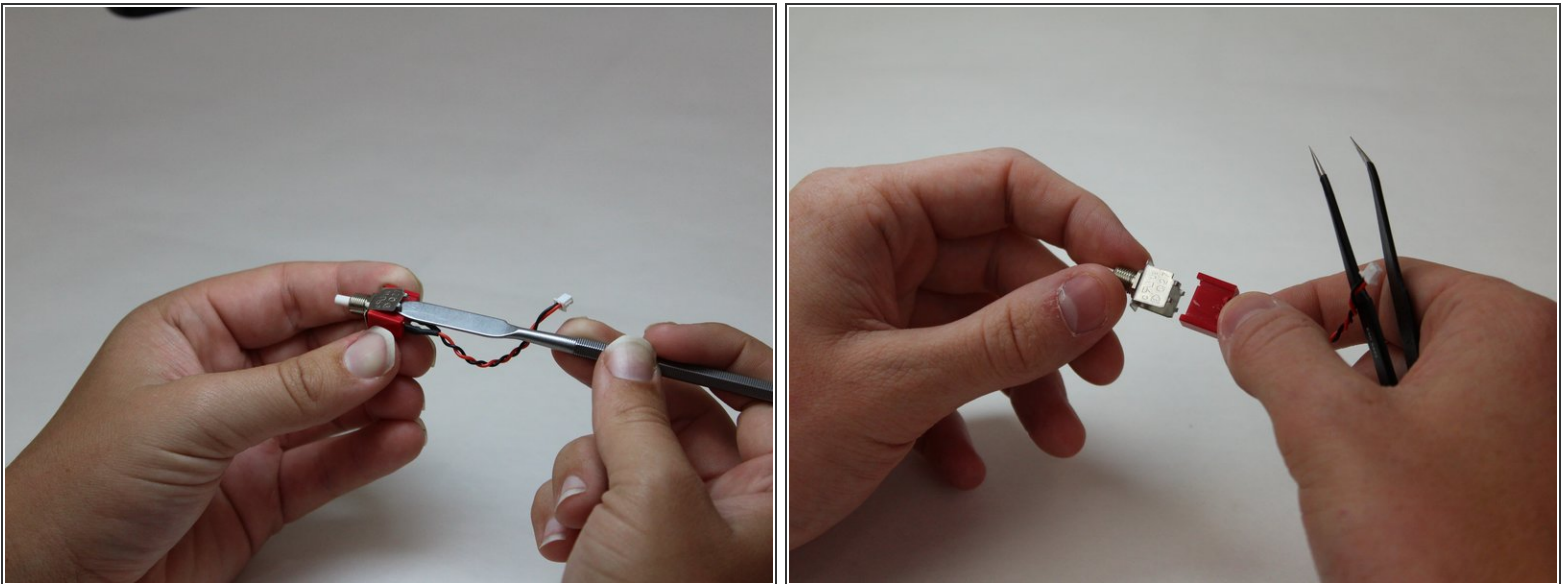


## Step 11



- Once the switch is removed, disconnect the switch from the circuit board by pulling the cable from the cable connector.
- ⓘ The cable will come out by pulling it away from you if the bottom of the controller is oriented closer to you.

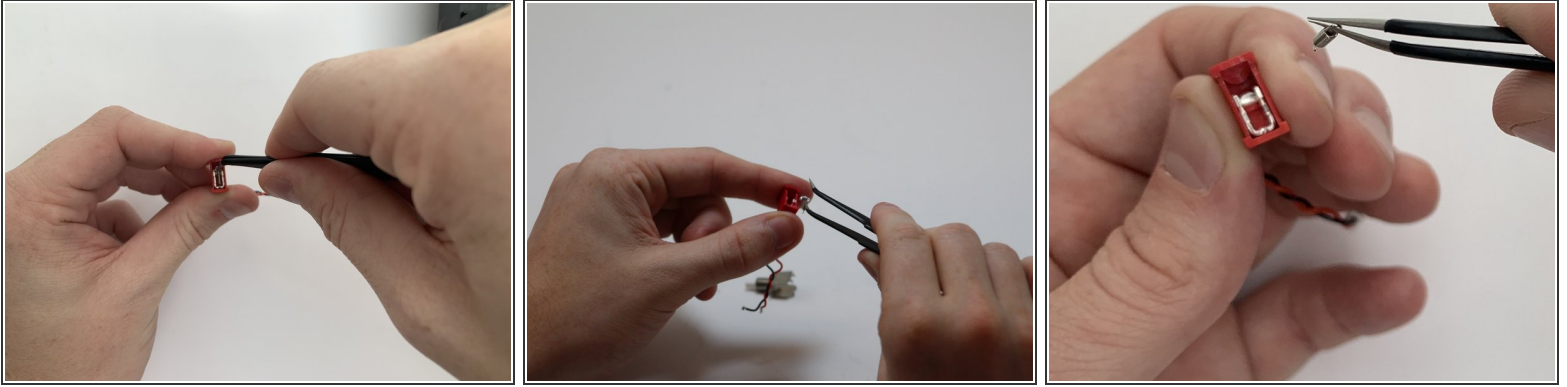
## Step 12 — Camera Switch Spring




- Carefully pry up the small metal feet surrounding the red switch connector on both sides using a metal spudger.
- ⓘ There are four feet located on the silver portion of the switch.



## Step 13



 Make sure to pull up and out where the spring connects. Do not pull from the middle of the spring or it will snap it.

- With the angled tweezers pinch the end of the spring with the loop and gently push the spring down and back, then lift up.
- Pinch the spring with the angled tweezers, bringing it to a vertical position. Then push down on the spring to remove it from the port that it is connected to.
- Pull the spring away from the housing.

To reassemble your device, follow these instructions in reverse order.