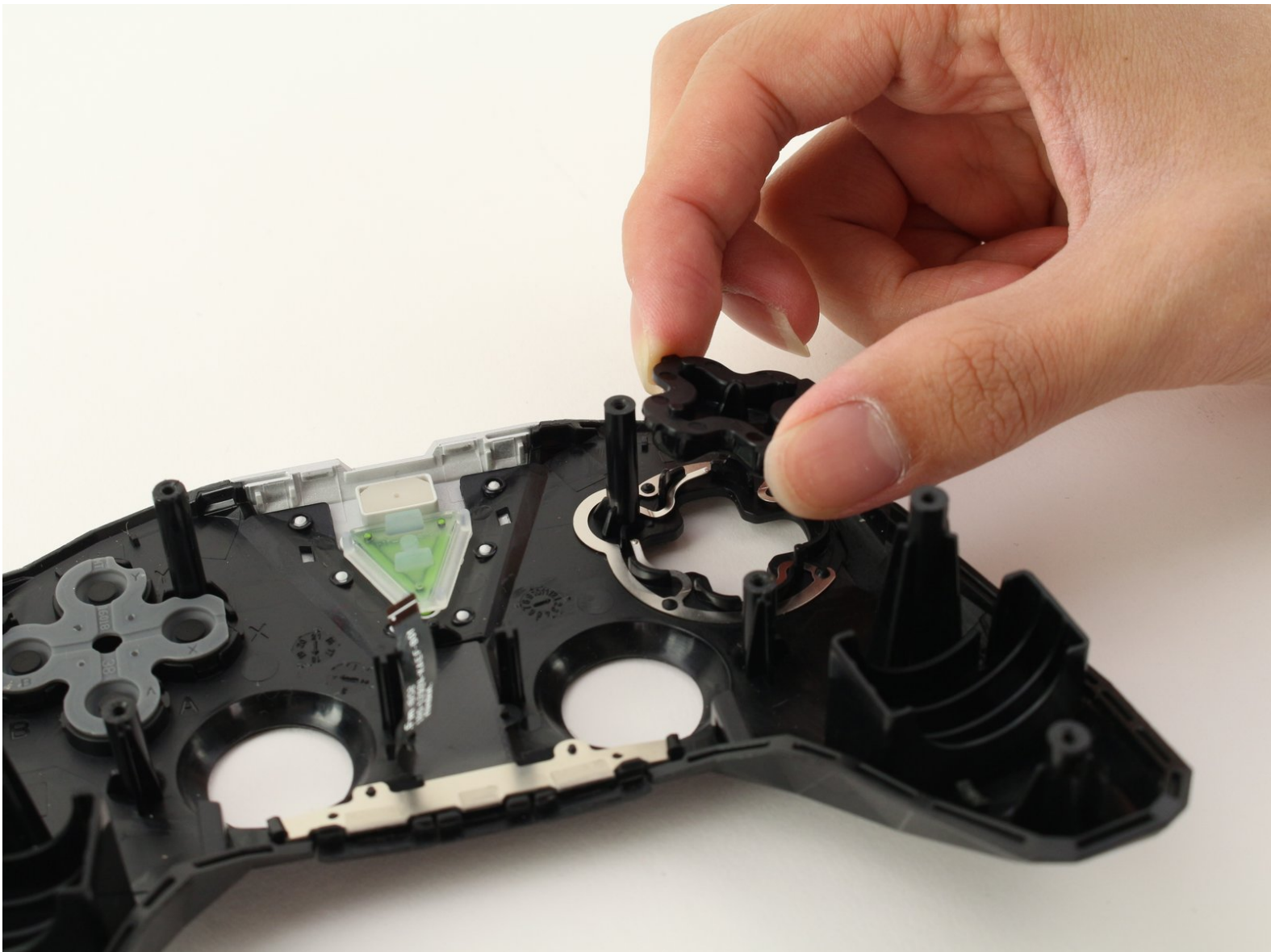




Nvidia Shield Pro Android TV Controller D-Pad Replacement

This guide will show you how to replace the D-Pad located on the upper right section of the Nvidia Shield Bluetooth Controller.

Written By: Ben Carrasco



INTRODUCTION

Use this guide if the D-pad on your Nvidia Shield Pro Android TV controller is unresponsive or the buttons on the pad are behaving irregularly. All you will need is a T6 Torx screwdriver and a plastic opening tool. The replacement process is straightforward, but carefully handle the circuit board and gently remove the wires from their sockets when instructed.



TOOLS:

- [iFixit Opening Tools](#) (1)
 - [T6 Torx Screwdriver](#) (1)
-

Step 1 — Bluetooth Controller D-Pad



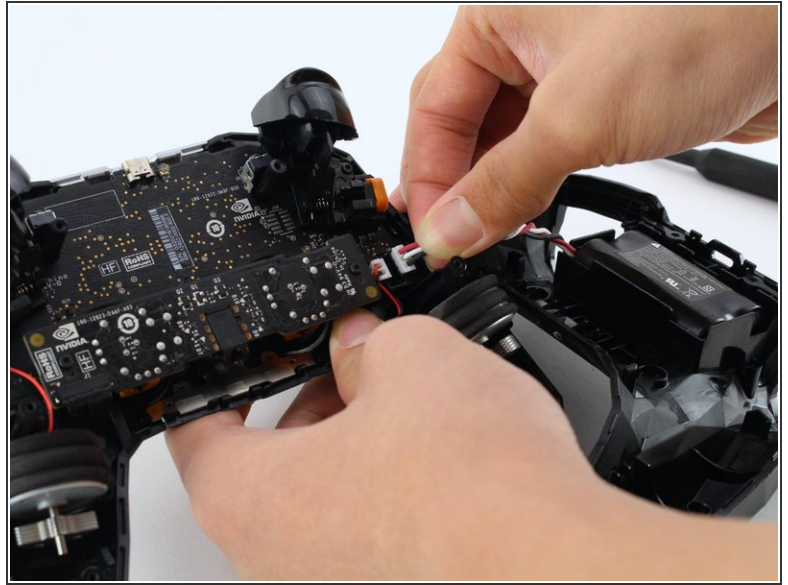
- Remove the six T6 Torx screws from the back of the controller.

Step 2



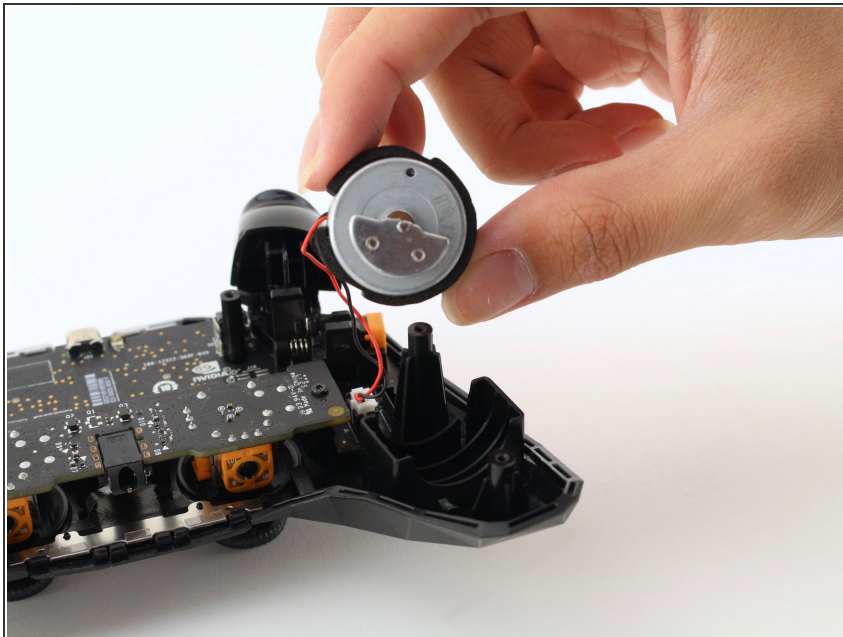
- Gently open the top frame of the cover with the plastic opening tool.

Step 3



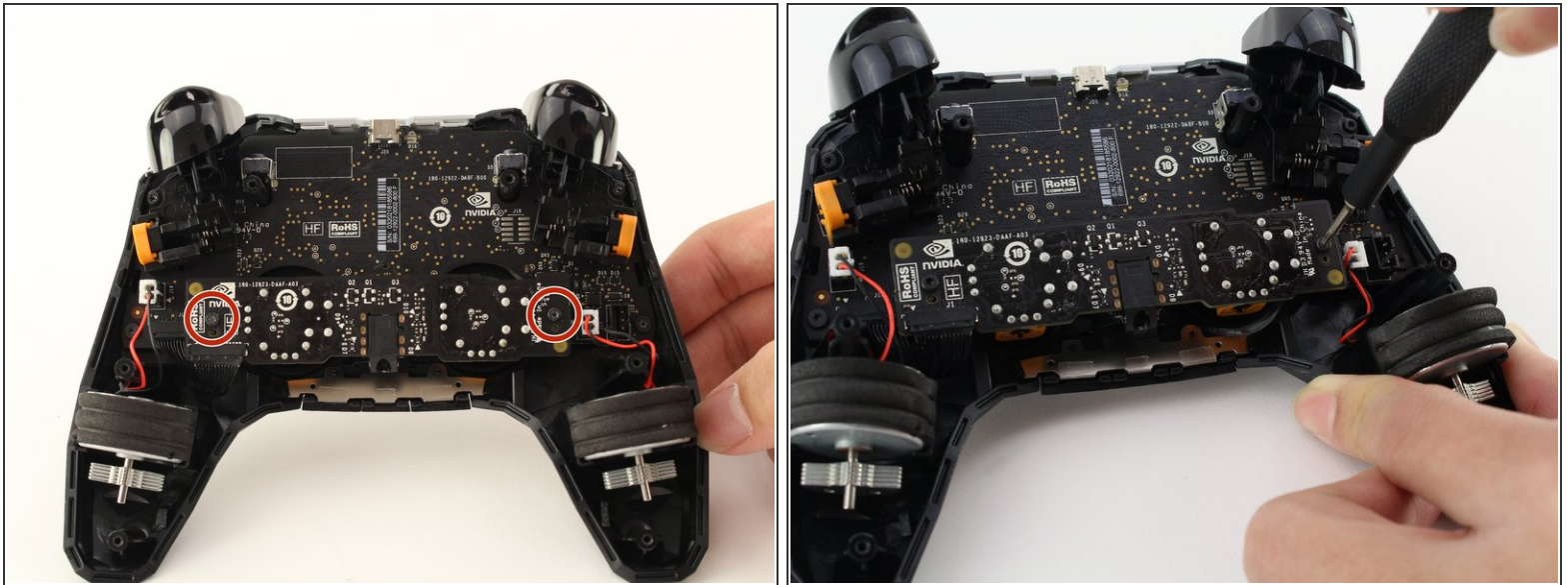
- Gently pull the wire connector out of its socket, separating the two halves of the controller.

Step 4



- Remove the wire attached to the circular piece.

Step 5



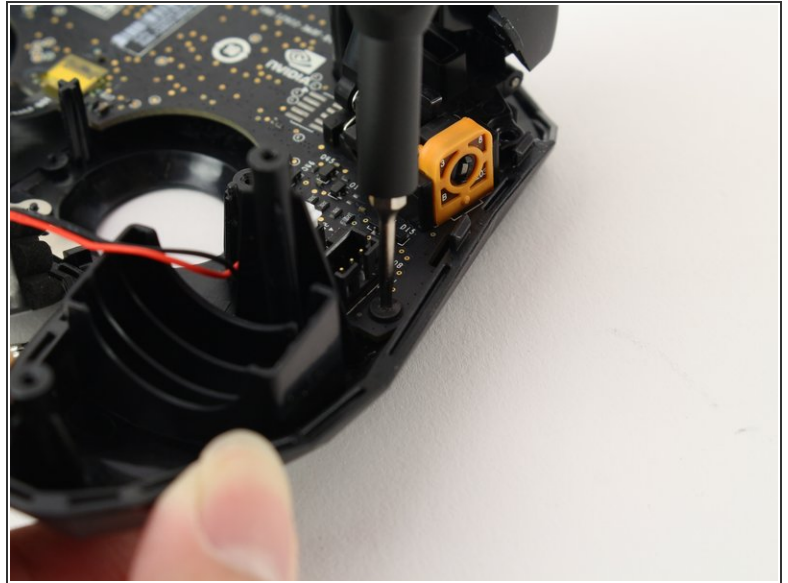
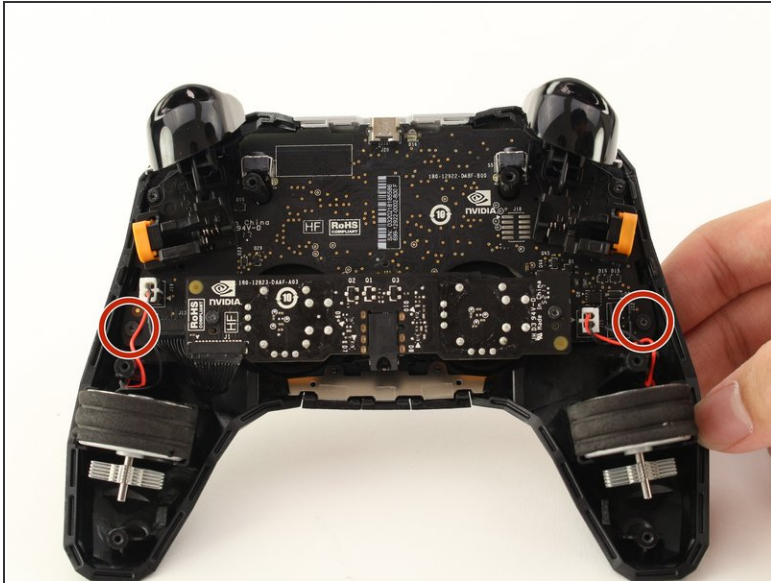
- Carefully remove the two T6 Torx screws from either side of the motherboard.

Step 6



- Remove the yellow plug from its socket.

Step 7



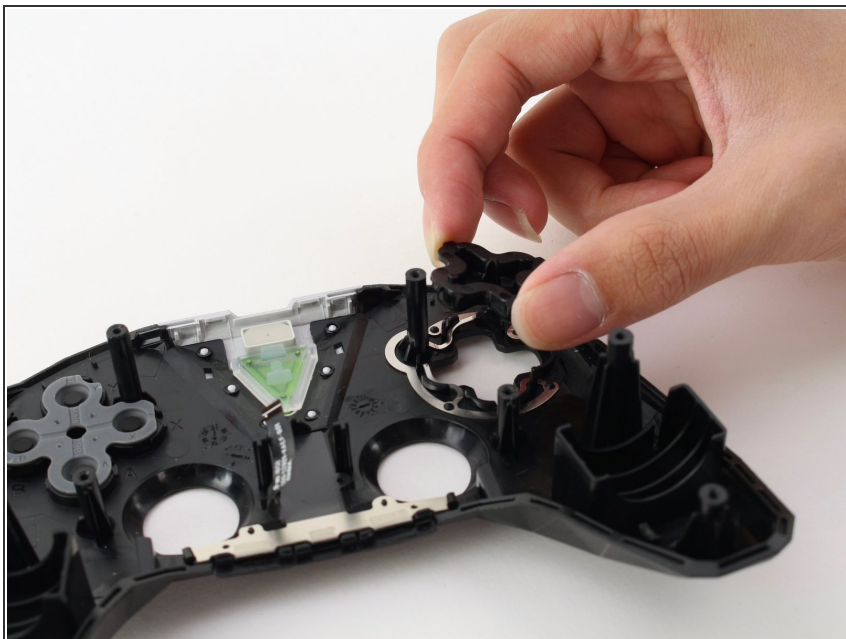
- Remove the two T6 Torx screws.

Step 8



- Slowly pull up the primary circuit board of the controller until the D-pad is revealed.
- Carefully remove the board.

Step 9



- Gently remove and replace the D-Pad.

To reassemble your device, follow these instructions in reverse order.