



# 2004 Mini Cooper Driver Window Replacement

In this guide we will be showing you how to correctly and easily replace the driver window of a 2004 Mini Cooper.

Written By: Oliver D.



## INTRODUCTION

In this guide we will simply replace the window of the vehicle in the easiest way possible for the average person who may have little experience in fixing or dealing with cars. With enough patience, anyone could do this fix and save tons of money, as opposed to taking it to a dealership or repair shop, where the costs of repair would be much higher.



### TOOLS:

- [Craftsman WRENCH, ALLEN HEX 5/32 820193-006](#) (1)
- [Flathead 3/32" or 2.5 mm Screwdriver](#) (1)
- [Phillips #3 Screwdriver](#) (1)

## Step 1 — Driver Window



- Roll down the window.
- Remove the 3 exposed screws on the plastic door panel using the Phillips #3 Screwdriver.

## Step 2




- Remove the red reflector at the top edge of the door panel using a flathead screwdriver.
- Unscrew the screw beneath the reflector using the 5/32 Allen key.

### Step 3



- Remove the handle and speaker cover using a flathead screwdriver.

 Be careful not to pry with too much force, as this may cause the plastic to crack.

### Step 4



- ① Wedge the door open with a flathead screwdriver and be careful with the locking mechanism when removing the panel.
- Once the door panel has been popped off, use both hands and set it aside carefully.

## Step 5



- Remove the 3 screws holding the speaker in place using the Phillips #3 screwdriver.
  - ⚠ On the final screw, hold the speaker part with one hand to make sure it does not fall off onto a hard surface and get damaged.
- Lift the speaker out and set it nearby, being careful not to pull excessively on the wire connected to it.
- ⓘ It may be useful to set the speaker within the cabin, or to place it on a box beside the door panel, but it will all depend on how long the speaker cable is.

## Step 6



- Remove two screws, one in the bottom-left corner of the door panel and the other in the speaker hole, with a 5/32 Allen key.
- ⓘ These screws will loosen the rollers that hold the window in place.

## Step 7



- Roll the window up after loosening the roller screws in the previous step.
  - After rolling up the window, simply use two hands to carefully remove the window.
- ⚠ You may need a second person to remove the window and put in the new one, as this will prevent a window from falling and shattering, which may cause injury.

## Step 8



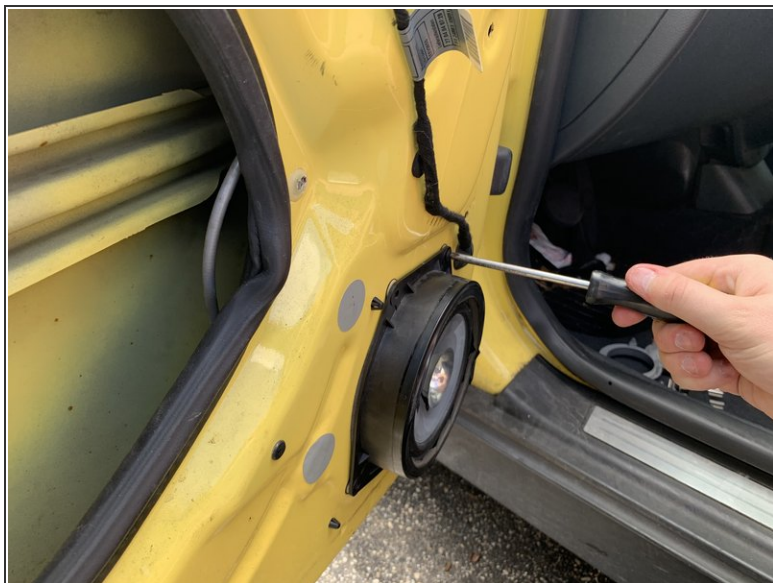
- Roll the window down at least 1/4 of an inch and then place new window in between the rollers.
- ⚠ Do this carefully as to not drop the window and causing it to shatter, which may potentially lead to an injury.

## Step 9



- Roll down the window all the way again and replace the two screws in the bottom-left corner and speaker hole with the 5/32 Allen key to secure the window rollers.

## Step 10



- Place the speaker back in the door panel and replace the three screws to secure it using the Phillips #3 Screwdriver.
- ⓘ Make sure to use both hands, one to screw the speaker screws in, and another to hold it in place and line up the holes.

## Step 11



- Align the door panel and the metal frame of the door, then using a mallet or your hand, pop the panel back into place carefully.
- ⓘ Make sure that when using your hand or mallet to put the door panel back in, you do not apply too much pressure as it may cause the plastic clips of the door panel to crack.

## Step 12



- Using the Phillips #3 Screwdriver, screw in the three side panel screws back into place.

## Step 13



- Screw on the fourth screw on the door panel using the Phillips #3 Screwdriver.
- Snap on the red reflector using your hand. Again, not too much pressure is need, as excess pressure may cause the red reflector to crack.

## Step 14



- Snap on the handle and speaker cover using your hand. And once, again, use enough pressure to snap it back in place, and not excess pressure.