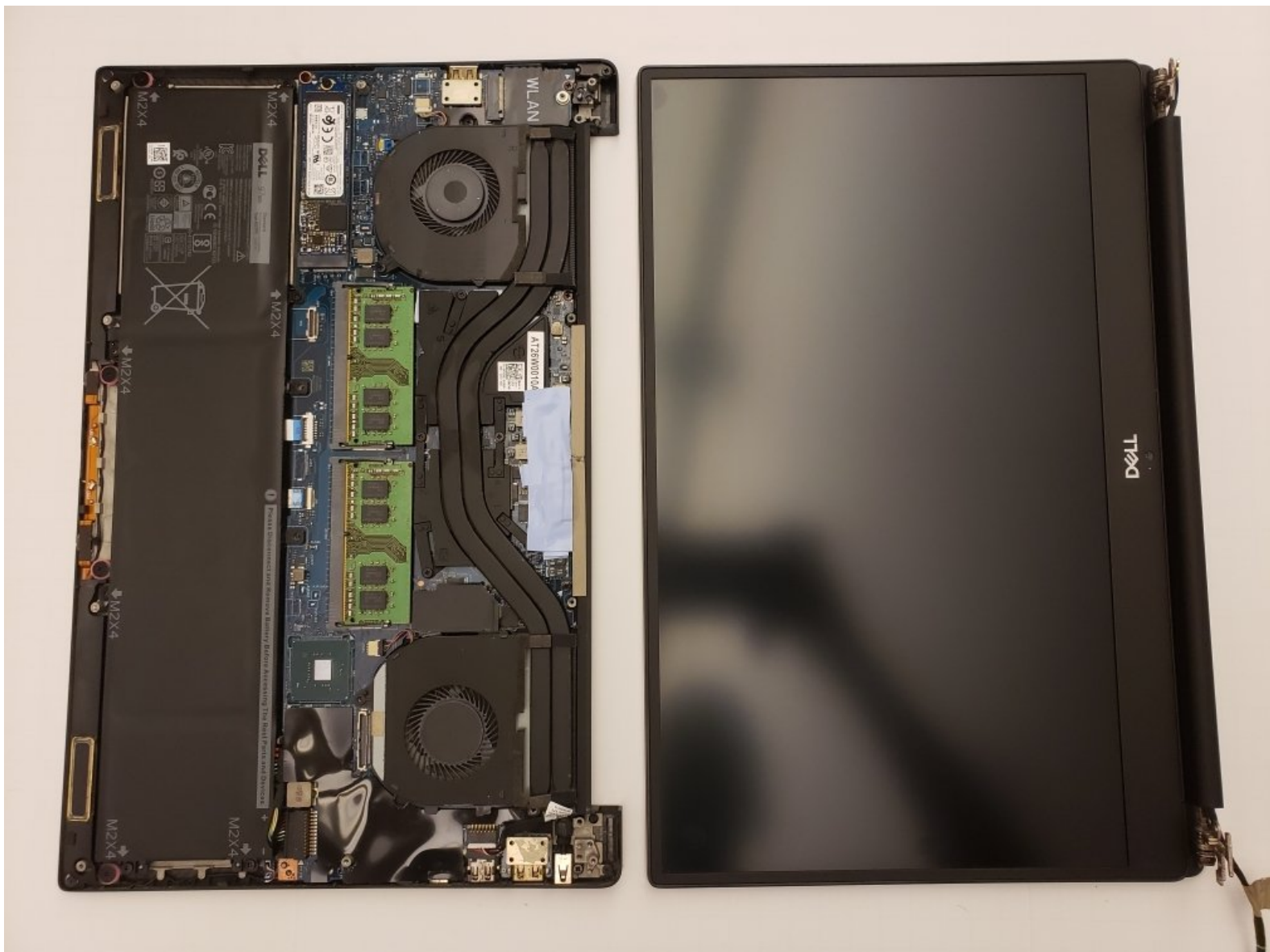




Dell XPS 15 9570 Display Replacement

Replace a broken 2018 Dell XPS 15 9570 display with simple tools.

Written By: Nissan Uddin



INTRODUCTION

If the display on your Dell XPS 15 9570 is damaged or will not turn on, you may consider replacing the display assembly. This do-it-yourself guide will walk you through each step of removing the display assembly from the rest of the display case.

The display assembly constitutes the front panel of the display portion of your Dell XPS. Other than the obvious signs of damage or malfunction, other symptoms may tell you it is time to replace the display. These include the appearance of “dead” pixels, splotches, or a screen that is having trouble reaching full brightness.

Before using this guide, you may check the settings on your device for brightness and contrast to see if the image cannot be corrected.

Check to make sure that you have all of the required tools and parts before beginning this guide. A steady hand and attention to detail is required to complete these tasks.

Be sure to power off the device before beginning work on any electronic application (see step one).



TOOLS:

- [T5 Torx Screwdriver](#) (1)
- [Phillips #00 Screwdriver](#) (1)
- [Spudger](#) (1)
- [iFixit Opening Tools](#) (1)




PARTS:

- [Dell XPS 15 screen assembly](#) (1)

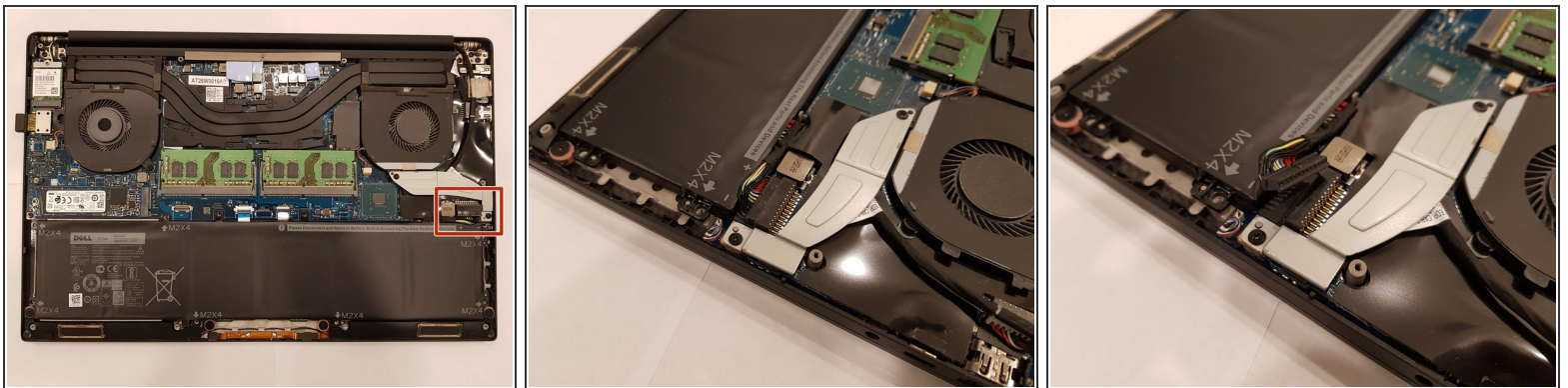
Step 1 — Display




 Power off your XPS 15 before beginning the disassembly.

- Remove the ten 3mm T5 Torx screws located on the outer perimeter of the device.
- Use a Phillips #00 screwdriver to remove the two 10mm screws under the flip up plate.
- Remove the rear panel using a plastic spudger. Its easiest to start from the top and work your way to the bottom.

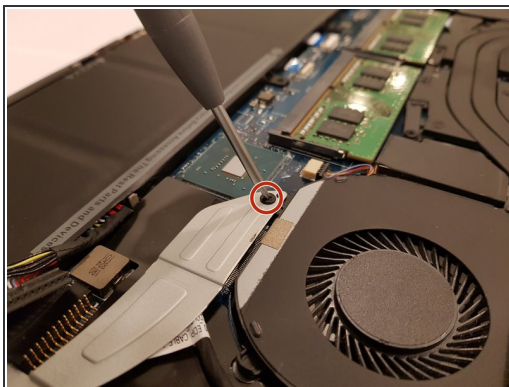
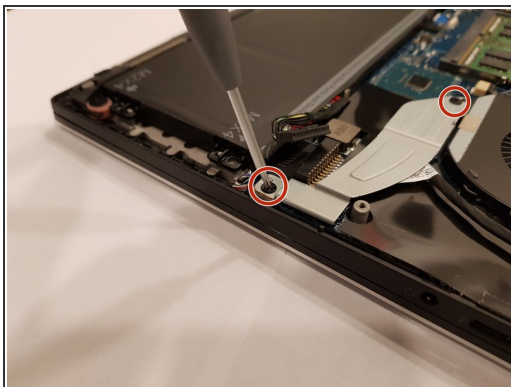
Step 2




 Before proceeding, be sure to disconnect the battery. Failure to do so may cause damage to the device.

- Using a plastic spudger, pull down on the connector towards the battery to disconnect it.

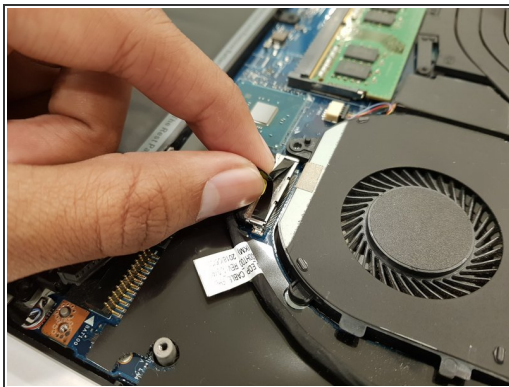
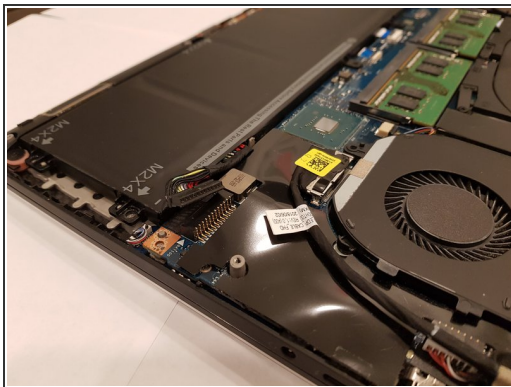
Step 3



- Use a Phillips #00 screwdriver to remove the two screws holding down the the display cable fastener.

 This will reveal the display connector.

Step 4



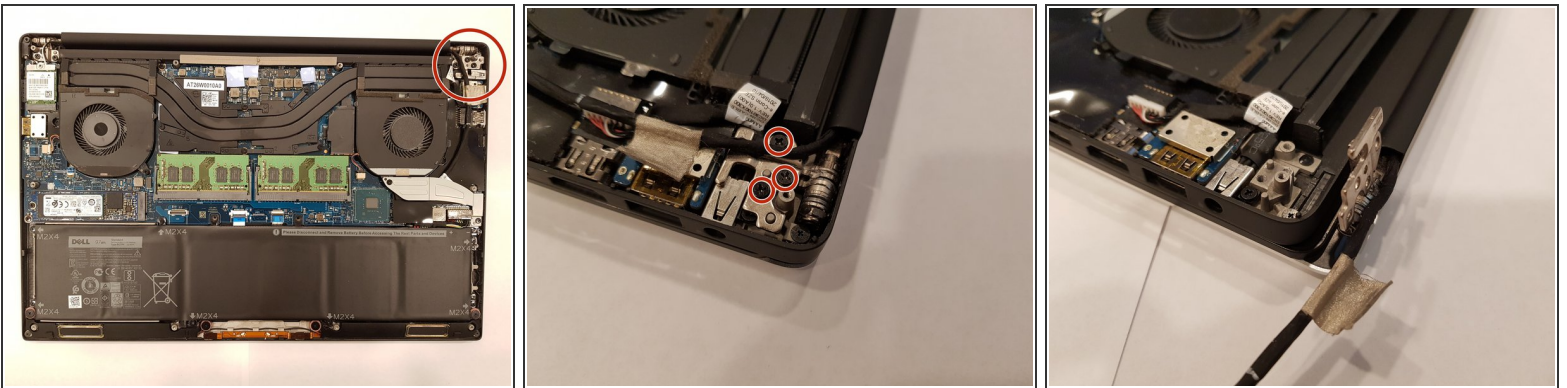
- Remove the yellow sticker holding down the connector.
- Pull up on the black tab to disconnect the display connector from the motherboard.

Step 5



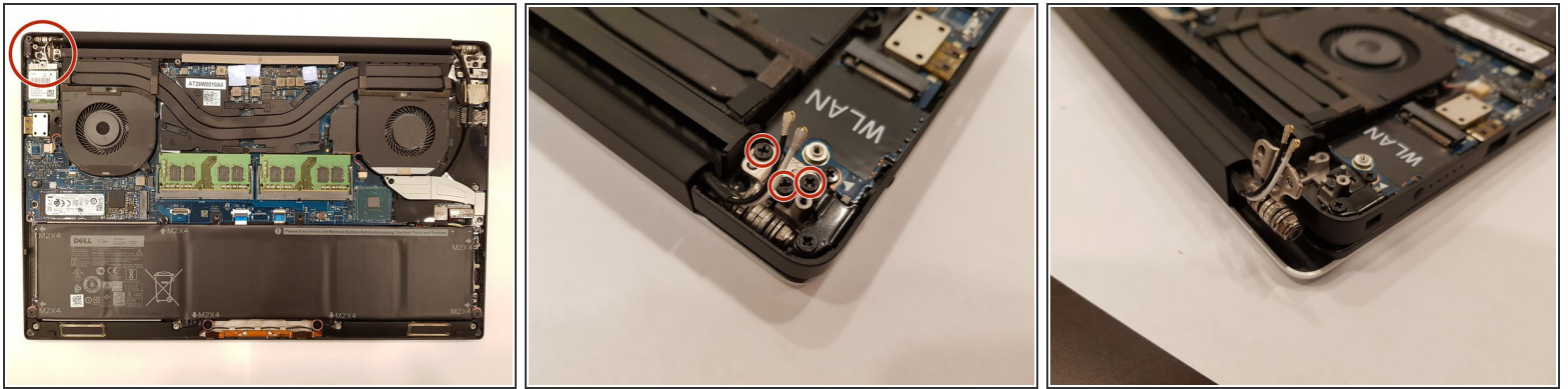
- Use a Phillips #00 screwdriver to remove the screw from the network card.
 - Disconnect the white and the black network wires by popping them up from the card with a spudger.
 - Remove the network card and set it aside.
- i** The white wire is connected to the MAIN and the black wire is connected to AUX. This is important when reassembling your device.

Step 6



- Unscrew the three screws from the screen bracket in the upper right corner using a Phillips #00 screwdriver.
 - Pry the latch up with a spudger or using the display for leverage.
- i** Its easier to pull up on the latch if you use the display as leverage.

Step 7



- Unscrew the three screws from the screen bracket in the upper left corner using a Phillips #00 screwdriver.
- Pry the hinge upwards with a spudger or using the display for leverage.
- ❗ Once the latches are 90° to the motherboard, the display is fully disconnected from the body of the laptop.

Step 8



- Pull the display assembly away from the rest of the case.

To reassemble your device, follow these instructions in reverse order.

This document was generated on 2020-12-30 12:20:15 PM (MST).

