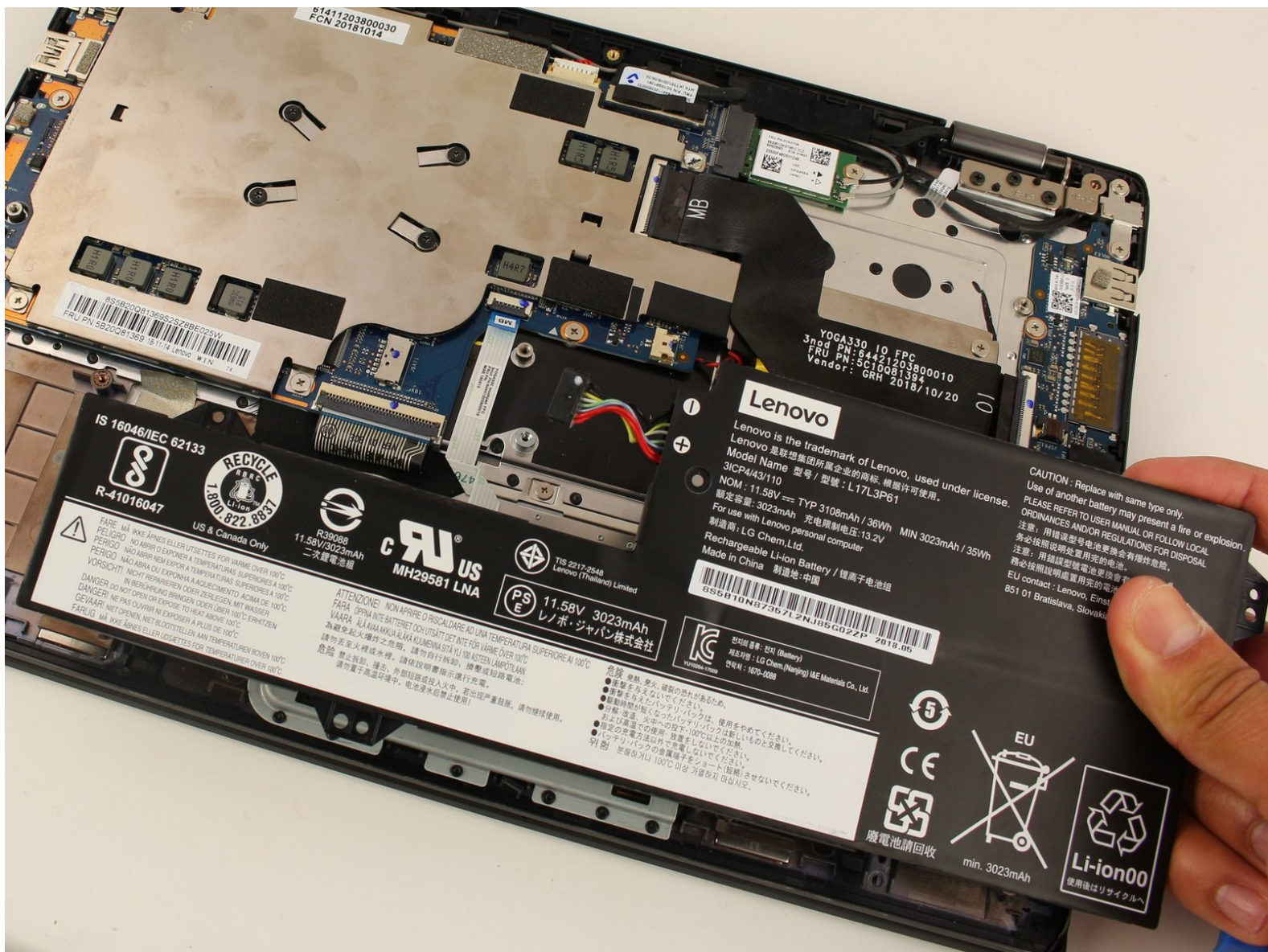




Lenovo Flex 6-11IGM Battery Replacement

Guide to replacing a battery of the Lenovo Flex 6-11IGM (model #: 81A70005US) that can not power the device or does not hold a charge.

Written By: Dustin Healy



INTRODUCTION

If the battery in your Lenovo Flex 6-11IGM (model #: 81A70005US) has lost its ability to hold a charge or can no longer power your device, you can follow this guide to replace it.

The battery must deliver a large amount of energy to the device in order to power it. This energy is stored in its chemical form inside the battery. Because of this, the internal components of the battery are volatile and dangerous if damaged. Be sure to use caution when removing the battery and keep it away from any excessive heat sources once removed.

Before beginning, make sure you power off the device, allow it to discharge over the course of a couple days, and make sure the laptop is closed for an easier and safer replacement.



TOOLS:

- [iFixit Opening Tools](#) (1)
 - [Phillips #00 Screwdriver](#) (1)
-

Step 1 — Back Panel



- Flip the device over and lay it down with the underside facing upwards.

Step 2



- Remove the ten screws with a Phillips #00 screwdriver.

Step 3



- Using a plastic opening tool, make your way around the edge of the laptop.

Step 4



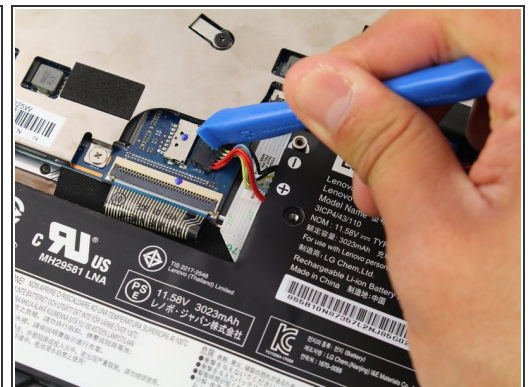
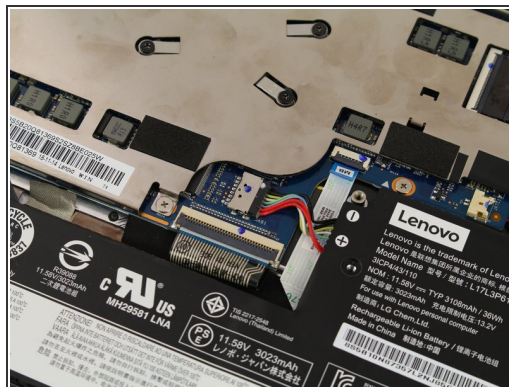
- After making sure the back panel is completely free from the body, remove the back panel.

Step 5 — Battery



- Remove the five 3.9 mm Phillips #00 black screws holding the battery in place.

Step 6



- Pull out the multicolored connecting cables using an iFixit opening tool.

Step 7



- Remove the now disconnected battery from the laptop.

To reassemble your device, follow these instructions in reverse order.