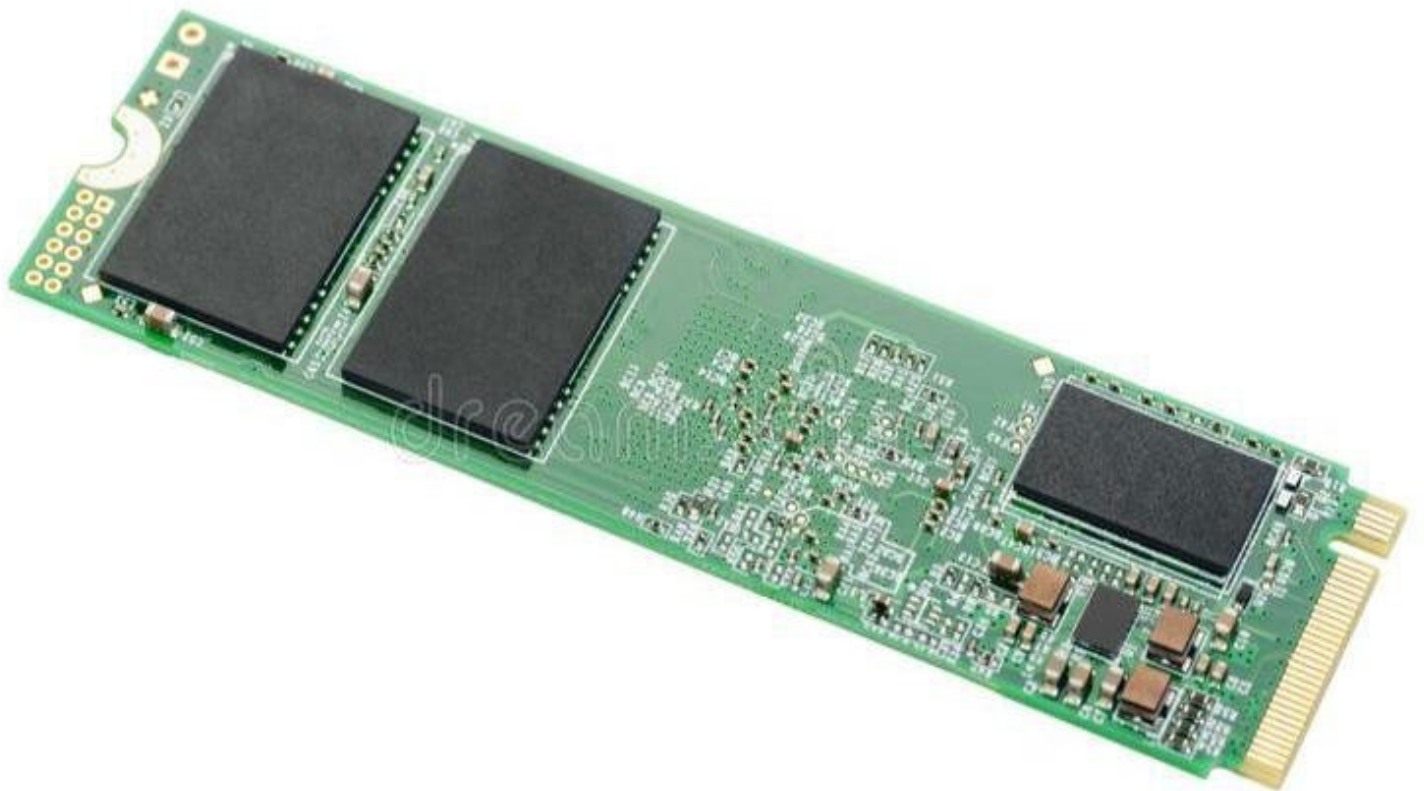




# Dell Latitude E7270 Solid State Drive Replacement

Use this guide to replace a full or broken...

Written By: Jacob Clement



## INTRODUCTION

Use this guide to replace a full or broken Solid State Drive on your Dell Latitude E7270.

The Solid State Drive is where your computer stores all of its downloaded software/drivers/operating system. Solid State Drives are more robust than typical Hard Disk Drives, but are not immune to physical damage or onboard shorts. A damaged/full Solid State Drive can do anything from slow your computer down to make it inoperable.

Before using this guide, check out the [troubleshooting page](#) to see if your symptoms match any that represent a bad battery.

You can also use this guide to upgrade the drive to increase storage space.

This replacement requires a #00 Phillips head screwdriver.

NOTE: This guide requires removal of the back panel and battery. The extra prerequisite guide steps are included in this guide.



### TOOLS:

- [Phillips #00 Screwdriver](#) (1)



### PARTS:

- [Crucial P3 NVMe PCIe M.2 2280SS SSD - solid performance, switching from HDD or SATA to NVMe™](#) (1)
- [Crucial P3 Plus NVMe PCIe M.2 2280SS SSD - fast Gen4 NVMe™ storage for data-intensive applications](#) (1)
- [Crucial P5 Plus NVMe PCIe M.2 2280SS SSD - professionals, creatives, and hardcore gamers](#) (1)

## Step 1 — Back Panel



- Place the device top down in front of you so that the vents are visible and are furthest from the user.

**⚠ Please be sure that the device is powered off and unplugged before removing parts or deconstructing anything.**

## Step 2



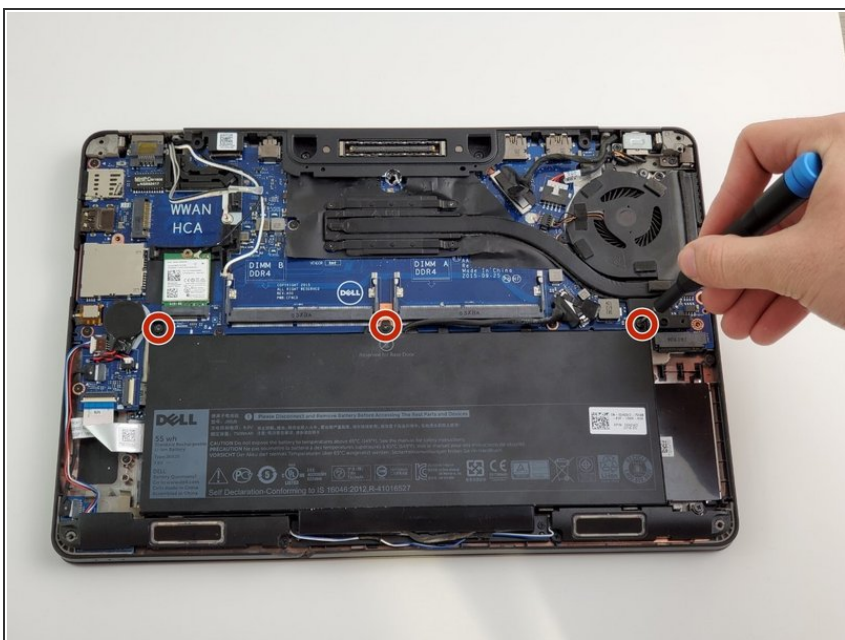
- Remove all eight M2.5 X 8MM screws with a Phillips #00 screwdriver.

## Step 3



- Lift and remove the panel.

## Step 4 — Battery



- Remove the three M2.5 X 5MM screws, located above the battery, with a Phillips #00 screwdriver.

## Step 5



- Disconnect the battery wire by using your fingers to pull diagonally left on the tab.

## Step 6



- Remove the battery completely by grabbing an edge and pulling up on the battery.

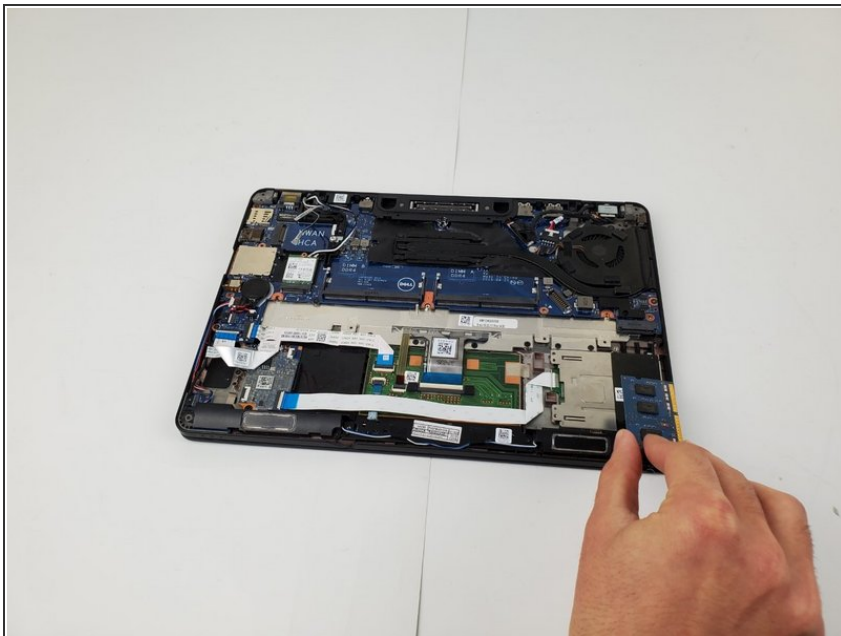


## Step 7 — Solid State Drive



- Locate the SSD stick on the bottom right of the device.
- ❗ In absence of an SSD, it was substituted with a RAM stick for visual/educational purposes only. The SSD in your device will look similar to your RAM and may vary in color.

## Step 8



- Use your fingers and pull the SSD towards you to remove it from it's socket.

To reassemble your device, follow these instructions in reverse order.