



Kenwood DRV-N520 Dashcam Speaker Replacement

This guide aims to assist with the removal and replacement of the internal speaker within this Kenwood Device.

Written By: NathanGoodwin



This document was generated on 2020-11-28 07:55:36 AM (MST).

INTRODUCTION

This guide will demonstrate the disassembly of the Kenwood DRV-N520 and the removal of its internal speaker.

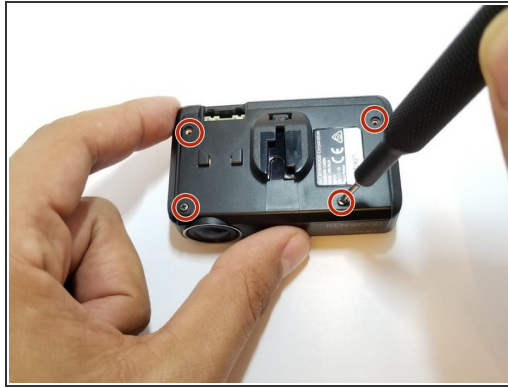
The speaker is used to provide the sound of the proximity alert and should be inspected if that function is not properly operating on your device.

(if after replacing the speaker, the proximity alert is still not functioning we recommend checking out our guide on the replacement of the internal camera. The two components work in tandem to provide this function)

TOOLS:

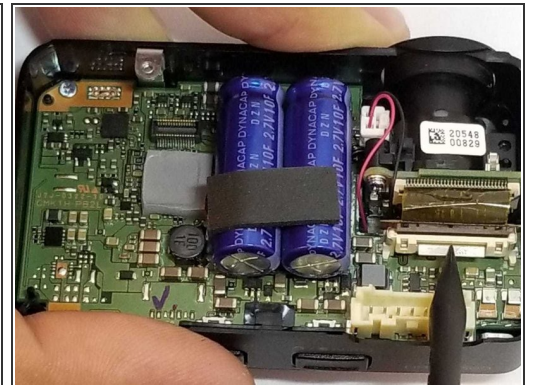
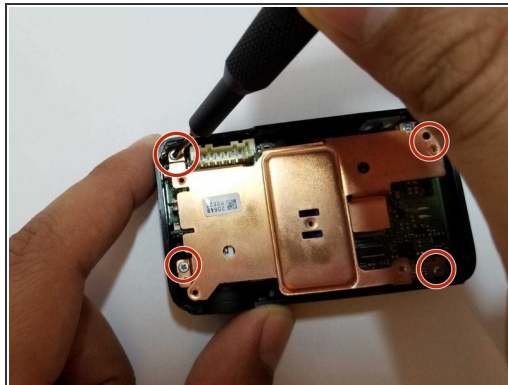
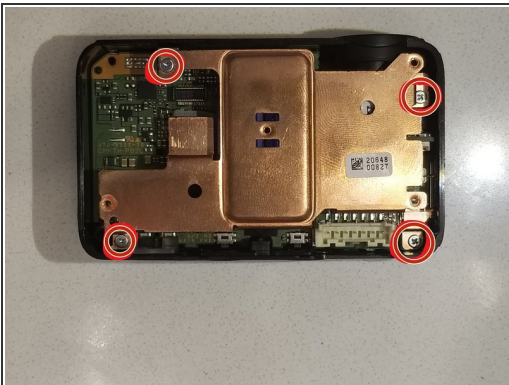
- [Phillips #0 Screwdriver](#) (1)
 - [Spudger](#) (1)
-

Step 1 — Speaker



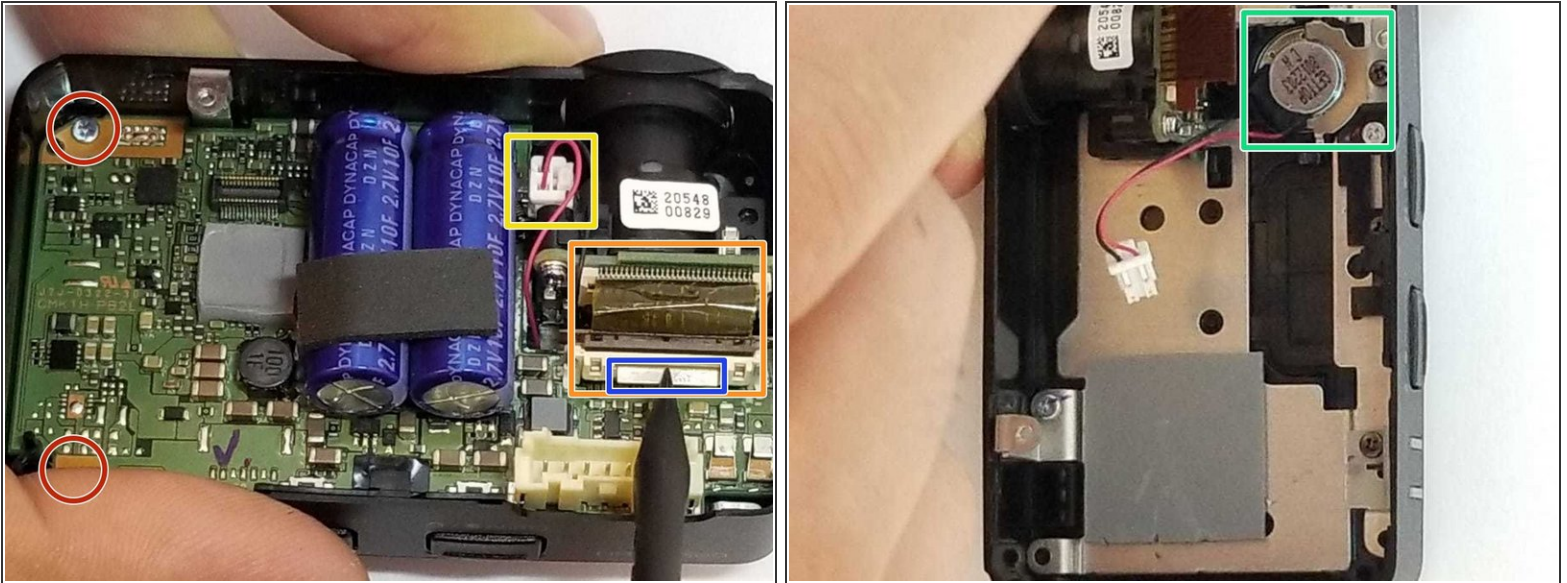
- Use a Phillips #0 screwdriver to remove the four 3mm screws from the device backing.
- Remove the backing.

Step 2



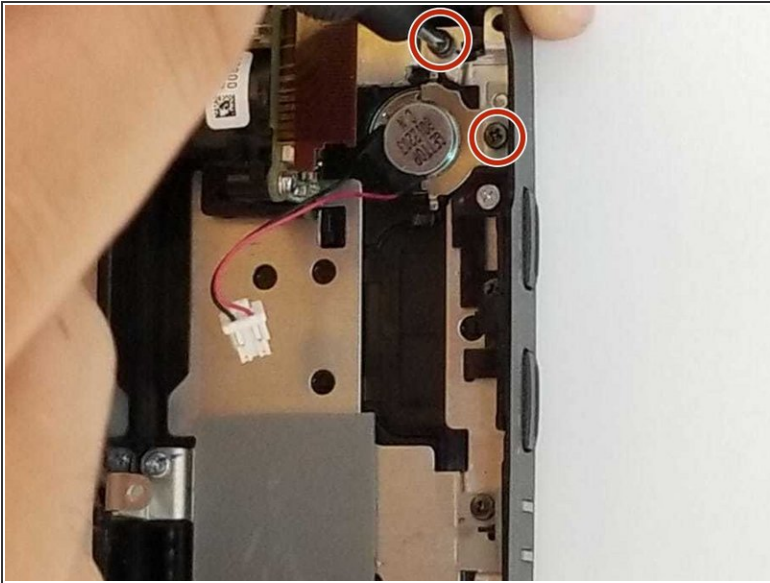
- Use a Phillips #0 screwdriver to remove the four 3mm screws in the copper plate.
- Remove the copper plate from the housing. The motherboard and capacitors should now be visible.

Step 3



- Use the screwdriver to remove the two screws holding the motherboard in place.
- Before attempting to remove the board, disconnect the camera by removing the ribbon cable from its corresponding connection on the board.
 - To remove the ribbon cable, use a plastic spudger to gently apply pressure to the lever that secures the cable in place while simultaneously applying a light pulling pressure on the ribbon cable.
- Disconnect the speaker connections (red and black wires) from the motherboard by applying pressure to the clip on its corresponding socket.
- Once all connections have been severed, gently remove the motherboard from the device casing.
- The speaker unit and corresponding mounting hardware should now be visible.

Step 4



- Use your Phillips #0 screwdriver to remove the two 3mm screws from the speaker's mounting bracket.
- Remove the speaker from the device.

To re-assemble your device, follow these steps in reverse order.