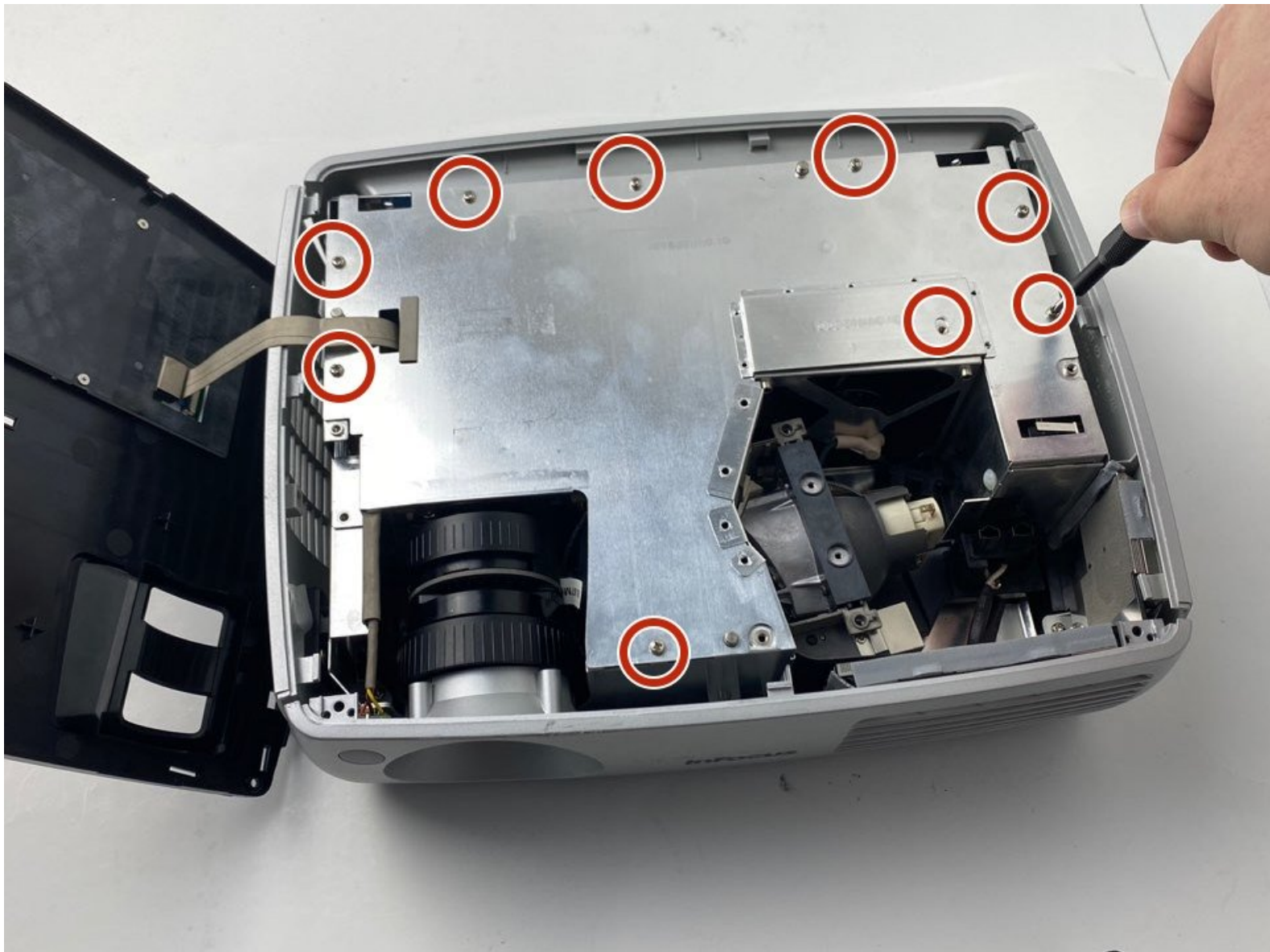




InFocus IN3104 Metal Cover Disassembly

This guide is to show you how to remove the Metal Cover on the InFocus IN3104

Written By: Christopher Held



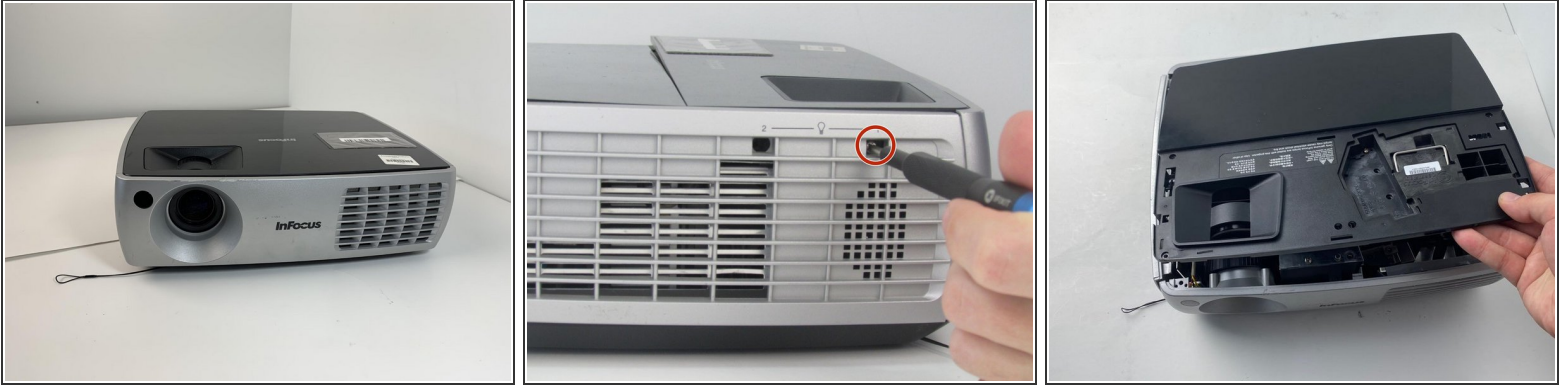
INTRODUCTION

This Metal Cover needs to be removed in order to replace most parts in the device.

TOOLS:

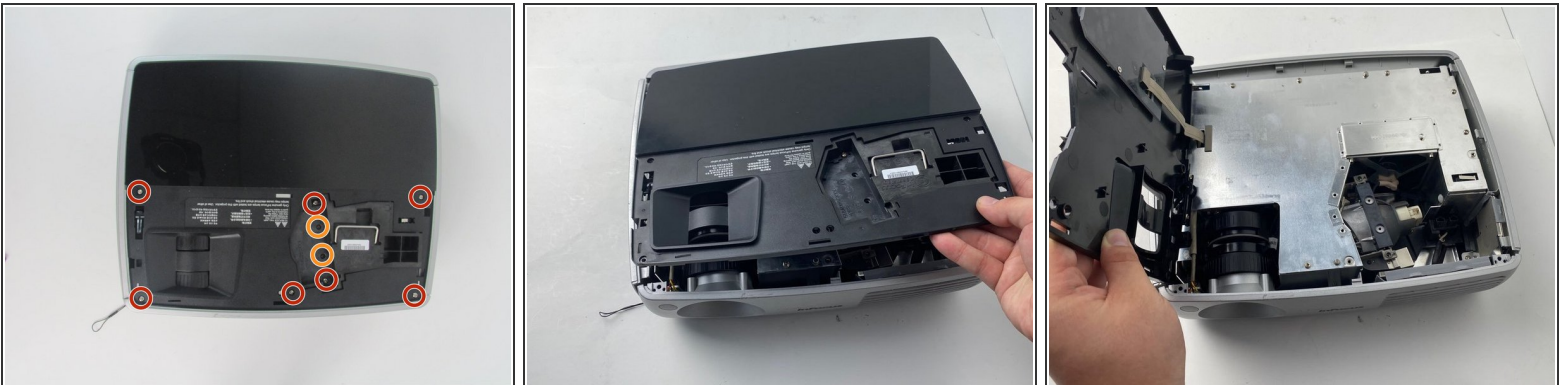
- [Magnetic Project Mat](#) (1)
 - [Phillips #1 Screwdriver](#) (1)
 - [Spudger](#) (1)
-

Step 1 — Top Cover



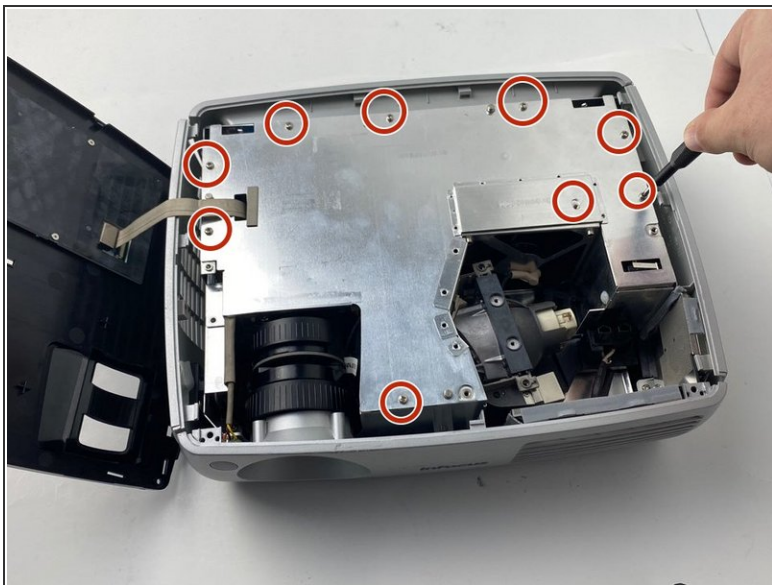
- Turn the projector so that the lens is facing you.
- i** On the left side of the projector, there is a screw and a knob inside of the small grate.
- Use a Phillips #1 screwdriver to remove the 6 mm screw that secures top cover.
- Remove the service cover.

Step 2



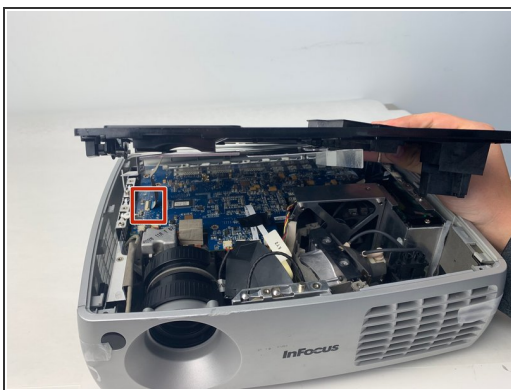
- Use a Phillips #1 screwdriver to remove the seven 6 mm screws.
 - Use a Phillips #1 screwdriver to remove the two 5 mm screws.
 - Remove the top cover.
- ⚠ Do not pull the cover too hard. It may damage the wire that is connected to the motherboard.**

Step 3 — InFocus IN3104 Metal Cover Disassembly



- Use a Phillips #1 screwdriver to remove the nine 6 mm screws.
- Lift up the metal cover and set it aside to reveal the motherboard.

Step 4



- Carefully pry up the black plastic locking bar of the ZIF connector on the motherboard with a plastic spudger.
- Pull out the blue-tipped, white ribbon cable from the connector.
- Remove the metal cover.

To reassemble your device, follow these instructions in reverse order.