



# InFocus IN3104 Cooling Fan Replacement

A guide to replace the Cooling Fan on the InFocus IN3104.

Written By: Tae Min Kim



## INTRODUCTION

If your InFocus IN3104 device is overheating very easily the cooling fan may need to be replaced. This may be caused by a buildup of dust on the fan, or the fan just not turning properly. The cooling fan keeps the device at a cool and regulated temperature.



### TOOLS:

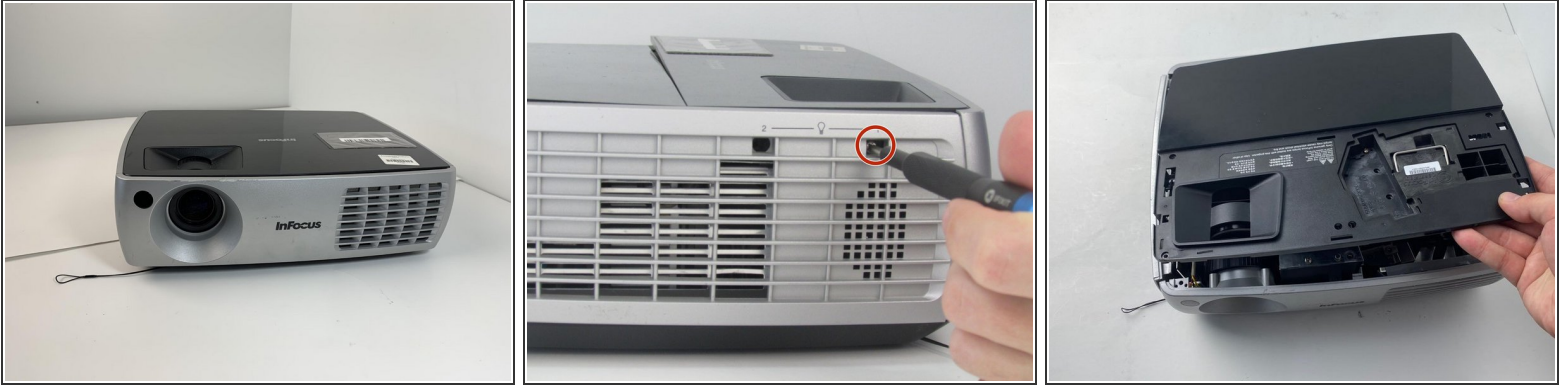
- [Phillips #1 Screwdriver](#) (1)
- [Spudger](#) (1)
- [Magnetic Project Mat](#) (1)



### PARTS:

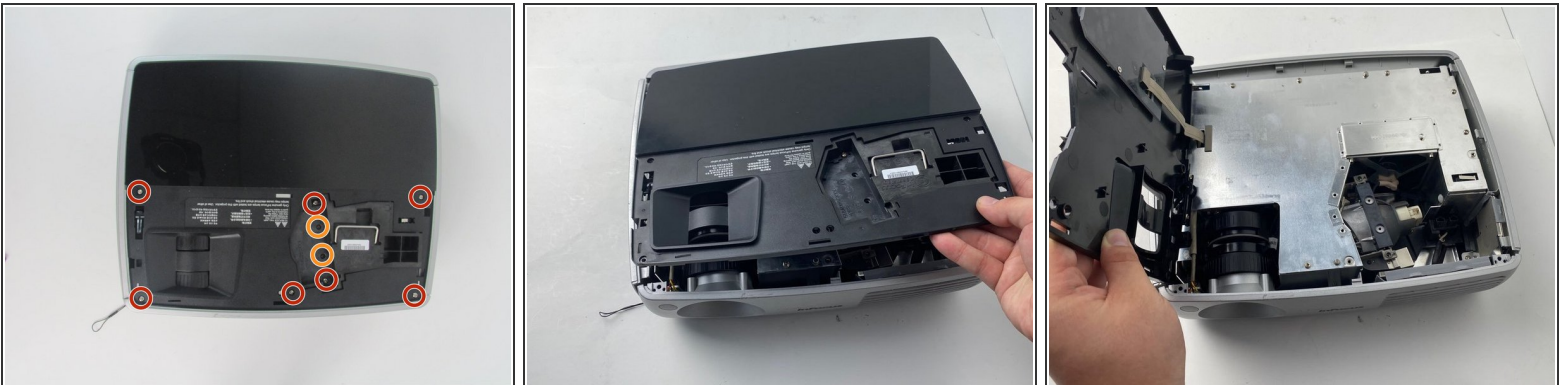
- [InFocus IN3104 Cooling Fan](#) (1)

## Step 1 — Top Cover



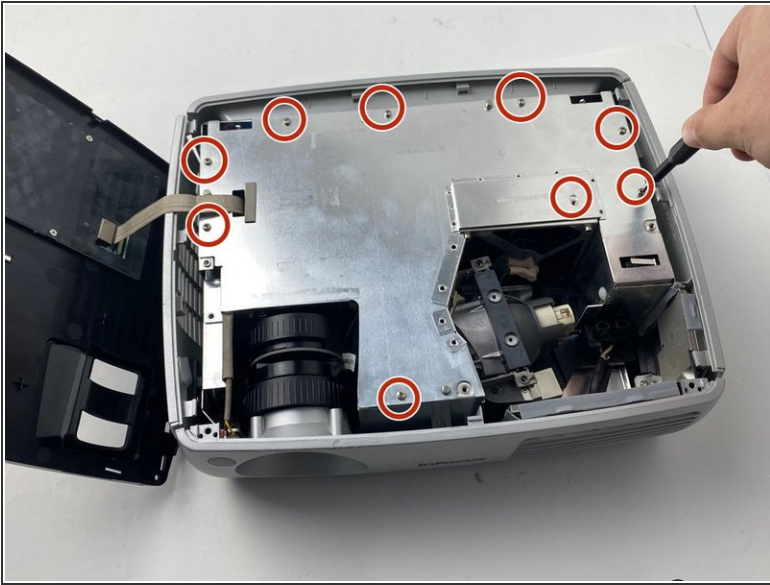
- Turn the projector so that the lens is facing you.
- i** On the left side of the projector, there is a screw and a knob inside of the small grate.
- Use a Phillips #1 screwdriver to remove the 6 mm screw that secures top cover.
- Remove the service cover.

## Step 2



- Use a Phillips #1 screwdriver to remove the seven 6 mm screws.
  - Use a Phillips #1 screwdriver to remove the two 5 mm screws.
  - Remove the top cover.
- ⚠ Do not pull the cover too hard. It may damage the wire that is connected to the motherboard.**

### Step 3 — InFocus IN3104 Metal Cover Disassembly



- Use a Phillips #1 screwdriver to remove the nine 6 mm screws.
- Lift up the metal cover and set it aside to reveal the motherboard.

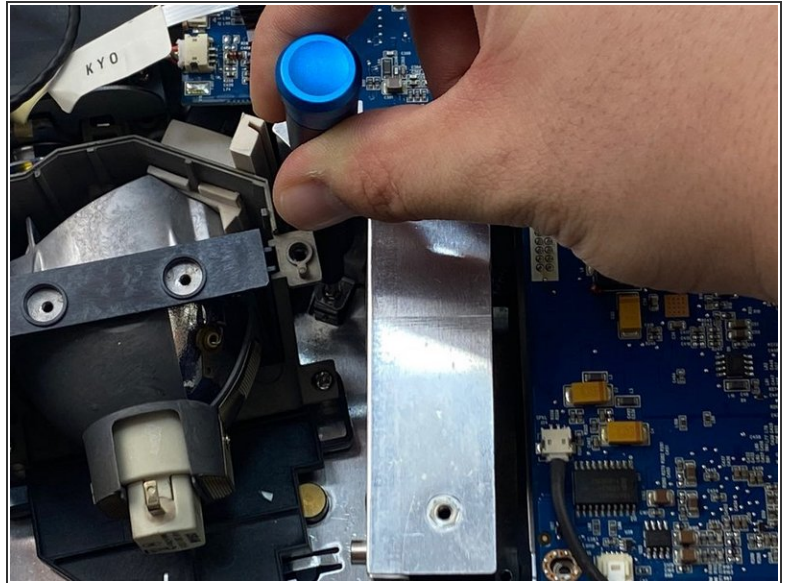
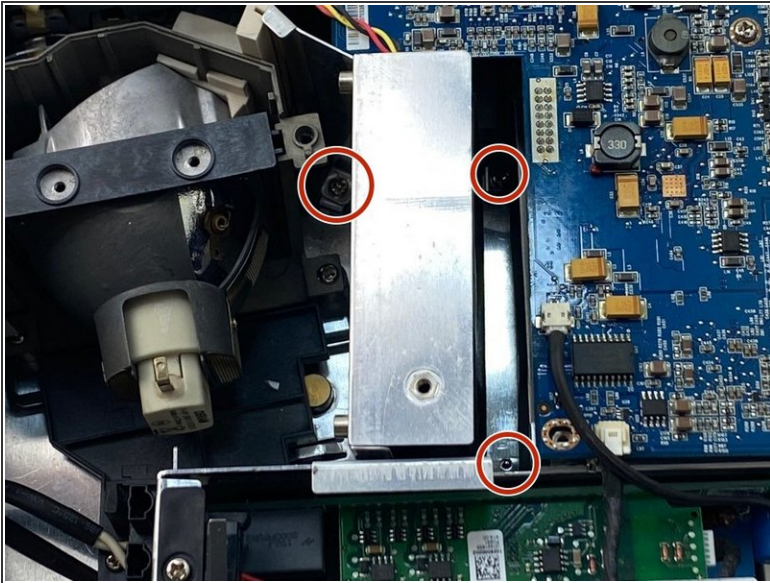
### Step 4



- Carefully pry up the black plastic locking bar of the ZIF connector on the motherboard with a plastic spudger.
- Pull out the blue-tipped, white ribbon cable from the connector.
- Remove the metal cover.

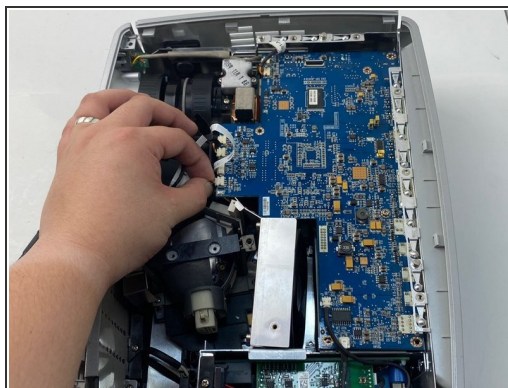
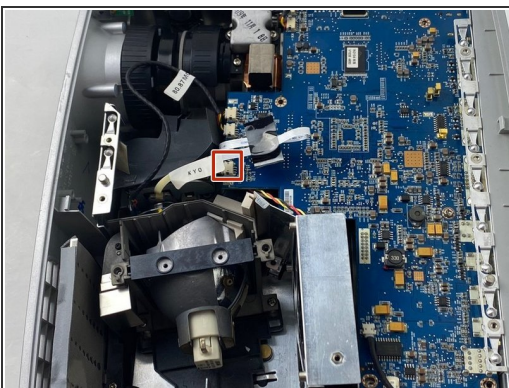


## Step 5 — Cooling Fan



- Use a Phillips #1 screwdriver to remove the three 6 mm screws on the metal cover beside the lamp.
- ⓘ The screws are in a tight location, so you may need a thin screwdriver or an extension to remove them.

## Step 6



- Unplug the yellow, red, and black colored cable bundle from the motherboard.
- Remove the cooling fan from the device by lifting it out.

To reassemble your device, follow these instructions in reverse order.