



# HP Envy x360 m6-w105dx RAM Replacement

This guide helps a user to find their RAM and replace it.

Written By: Julianna Snider



## INTRODUCTION

Random Access Memory (RAM) is essential because it temporarily carries software and memorize in current use. It allows the processor to access data much faster and mor efficient, compared to a hard drive or solid state drive.

HP Envy x360 m6-w105dx has 8GB DDR3L SDRAM (1 DIMM).

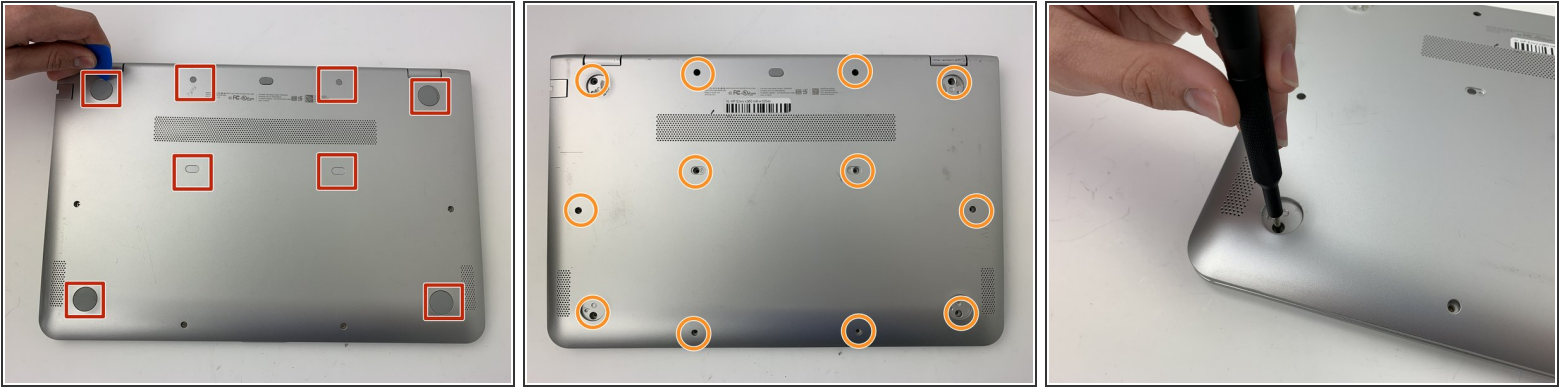
This guide page will provide instructions for dealing with RAM problem and replacing RAM.



### TOOLS:

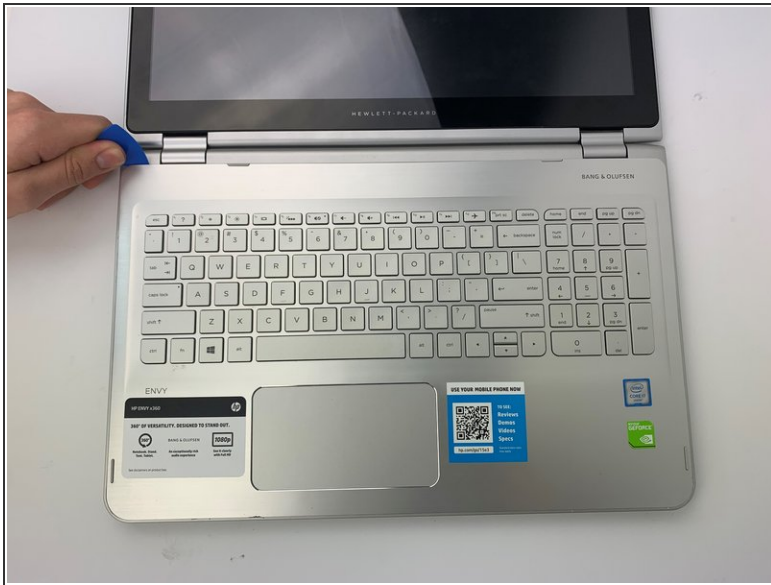
- [Phillips #1 Screwdriver](#) (1)
  - [iFixit Opening Picks set of 6](#) (1)
  - [iFixit Opening Tools](#) (1)
  - [Halberd Spudger](#) (1)
-

## Step 1 — Keyboard




- ✦ Make sure the laptop is powered off and disconnected from any outlets.
- Use the opening pick to lift up the eight rubber grips on the underside of the device.
- With the #1 Phillips screwdriver, remove the twelve 6mm screws from the back case.

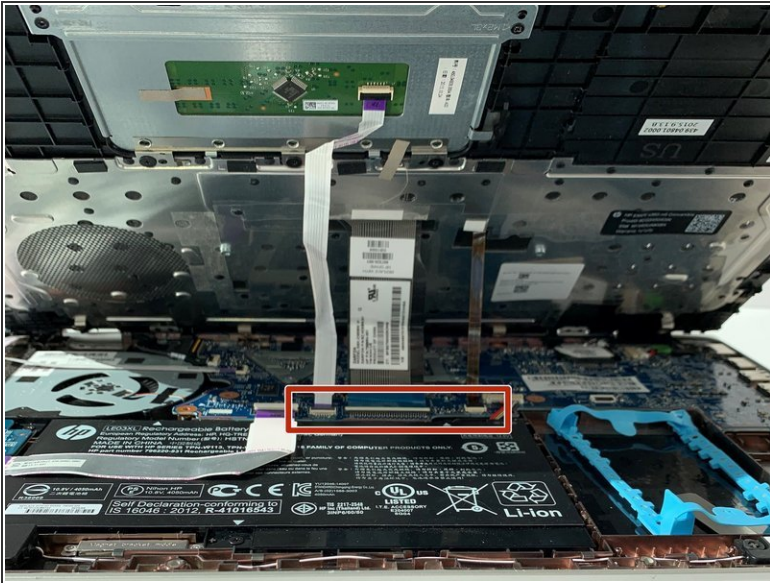
## Step 2



- Open the laptop and turn to the keyboard.
- Gently insert an opening pick into the edge of the keyboard panel, and slide around the keyboard lining until the clips have all been disengaged.
- Lift the keyboard panel from the bottom and carefully start to lift up.

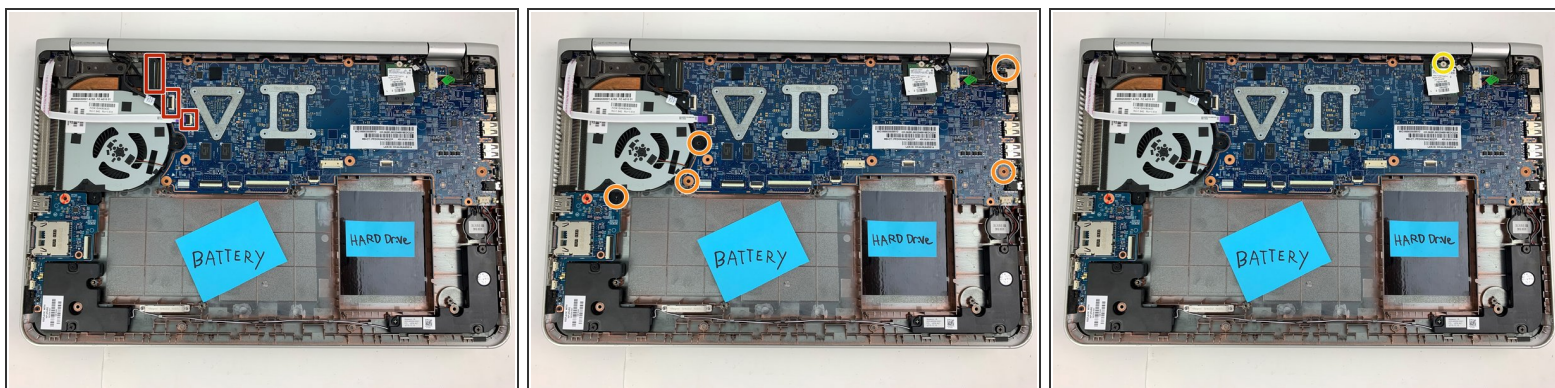
 There are ribbon cables still connected on the under side of the the keyboard. Do not pull the keyboard away from the device.

### Step 3



- Gently lift the keyboard up from the bottom.
- Carefully open the locking flap of the three ZIF connectors and detach the three ribbon cables from the motherboard using your fingers.
- ⚠ Do not remove the ZIF connectors by pulling on the wires, instead detach them by gently flipping up the plastic tabs located at the ends of the wiring.
- Fully remove the keyboard from the laptop and install your new keyboard.

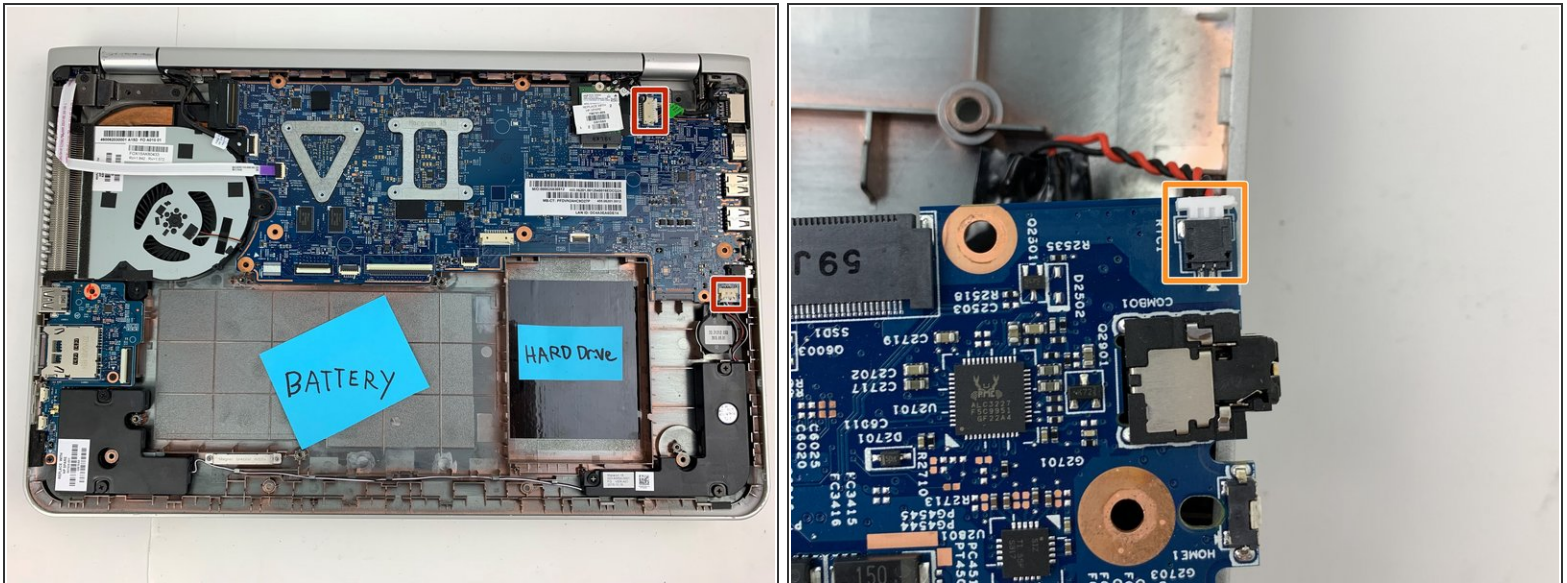
## Step 4 — RAM



- Gently open the ZIF connectors and remove the ribbon cables.
- Unscrew the five 4mm screws with the Phillips #1 screwdriver.
- Unscrew the WLAN chip and push the chip up and out of the port.

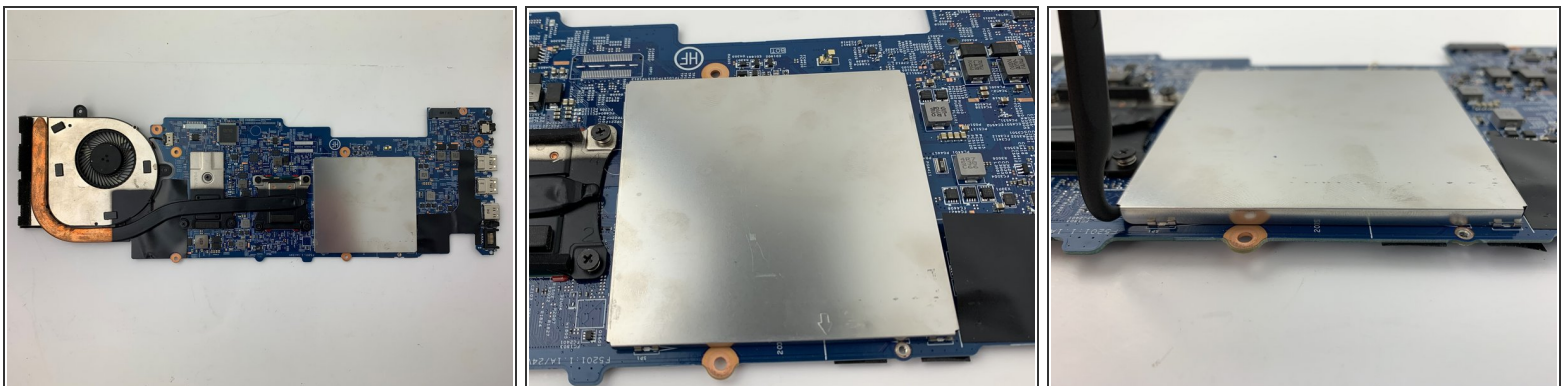


## Step 5



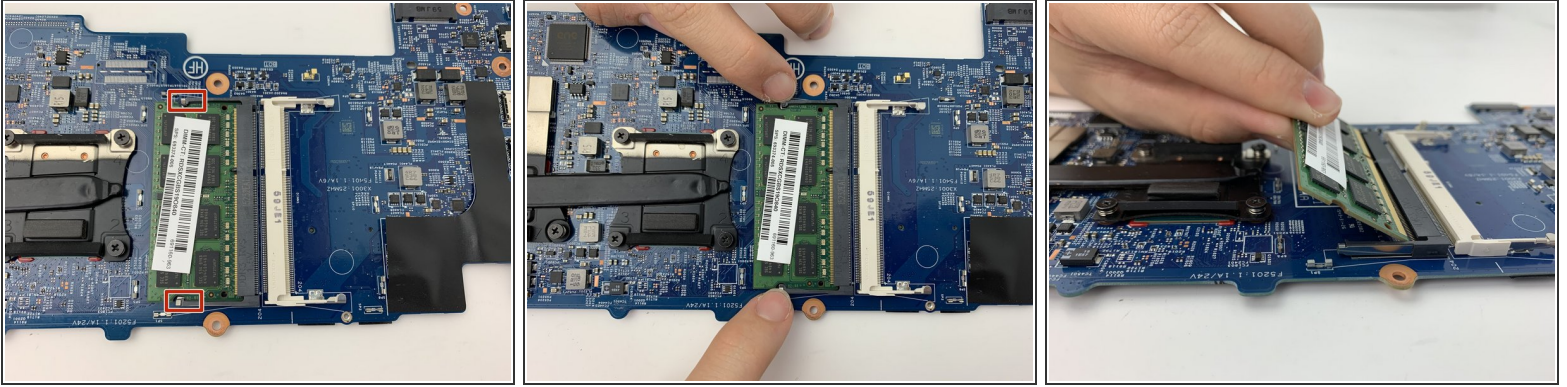
- Disconnect the cable connectors for the speakers.
- Lift the motherboard up and flip towards you to disconnect an additional cable connector on the rear side.
- Use an opening pick to pull the motherboard up on the fan side. Then pull the motherboard assembly out towards the left.

## Step 6



- On the underside of the motherboard, use the halberd spudger to pry up the square metal cover.
- ⓘ The metal cover is used to protect the RAM chips.

## Step 7



- Pull the metal retaining pins on either side of the RAM stick apart. The RAM stick will pop up.
- Remove the RAM and insert a new one that is compatible.
- ⚠ Do not force the RAM stick or it will snap.
- ℹ When doing a RAM replacement, make sure the correct chip is being used.

To reassemble your device, follow these instructions in reverse order.