



Parrot Skycontroller 2 USB Port Replacement

How to replace the USB port in a Skycontroller 2.

Written By: Aaron Collard



INTRODUCTION

In this guide, the USB port will be replaced on the Parrot Skycontroller 2P. If you are having trouble, with your phone connecting to the device, the [USB port](#) could be the problem. This guide will require desoldering and soldering the port, so check out our [How to Solder and Desolder Connections](#) guide for help on how to do so.

Before beginning, make sure to power off your device completely and disconnect from any external power source.



TOOLS:

- [TR6 Torx Security Screwdriver](#) (1)
 - [Flathead 4 mm Screwdriver](#) (1)
 - [iFixit Opening Tools](#) (1)
 - [Soldering Iron](#) (1)
-

Step 1 — Battery



- Flip your controller face down.

Step 2



- Remove one 9mm screw using a #4 flathead screwdriver.

Step 3



- Insert the plastic opening tool into the top of the cover and pry upwards to lift the battery cover.
- Remove the cover by pulling up and out.

Step 4



- Pull the connectors out by gently pushing the tabs and pulling up on the connector.
- Disconnect the battery from the remote by pressing the white tab and pulling the connectors apart.

Step 5



- Remove the battery from its brackets by pulling up on the ends of the battery.

Step 6 — USB Port



- Remove the seven black 11mm screws using the Torx TR6 screwdriver.
- Pull back the sticker with your finger nail and remove one 11mm screws using the Torx TR6 screwdriver.
- ⓘ There is a hidden screw located behind the sticker in the battery compartment.

Step 7



- Remove the seven silver 4mm screws from around the edge of the top panel using the Torx TR6 screwdriver.

i The opposite side to the third picture has a screw located on each side of the USB port.

Step 8



- Remove the battery compartment plate by pulling up and out.

Step 9



- Remove the top plate by pushing on the corners with your hand.

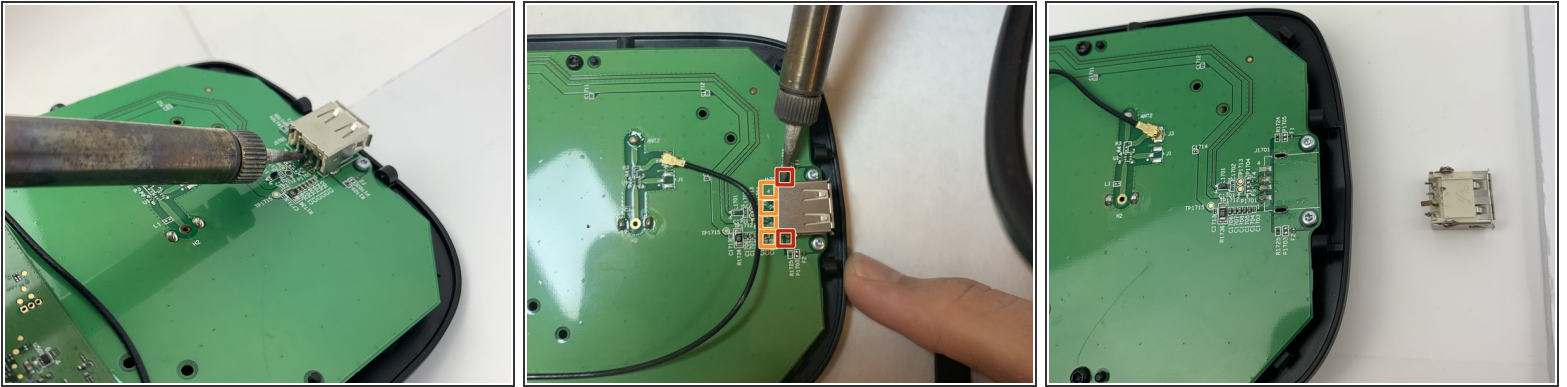
⚠ Be careful to not pull too hard on the cable.

Step 10



- Remove the face plate by pulling up and out.

Step 11



- Position the device so that the top panel is flat down on the table. You should have access to the USB Port.
- Desolder the two connection points in the back of the USB port.
- Desolder the four wires in the back of the USB port.
- Remove the the component from the board.

⚠ Excessive heat can damage the port, so do not apply the soldering iron to the component for too long.

To reassemble your device, follow these instructions in reverse order.