



Gateway NE56R27u Screen Replacement

This is a step-by-step guide on how to replace your Gateway laptop screen.

Written By: Piper Moeller



INTRODUCTION

As your laptop ages, drops, spills, and time can cause damage to your laptop screen. If the image is often distorted, the LD light is corrupt, or just a blatant crack in the screen, you can follow these steps to easily replace your screen. Replacing the screen will allow for a better image as well as an easier use of your device, without the frustration of looking at an unsatisfactory display.



TOOLS:

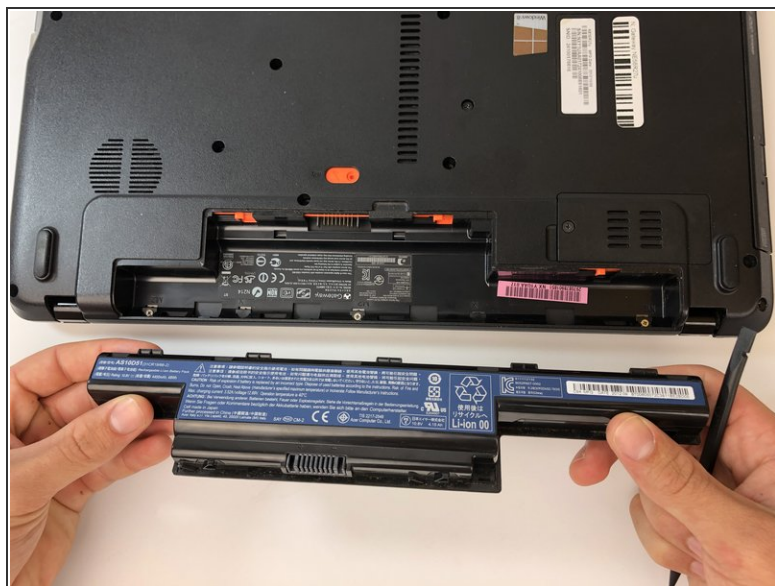
- [Spudger](#) (1)
 - [Phillips #000 Screwdriver](#) (1)
 - [iFixit Opening Picks set of 6](#) (1)
-

Step 1 — Battery



- Using the spudger, push the orange tab to the unlock position.

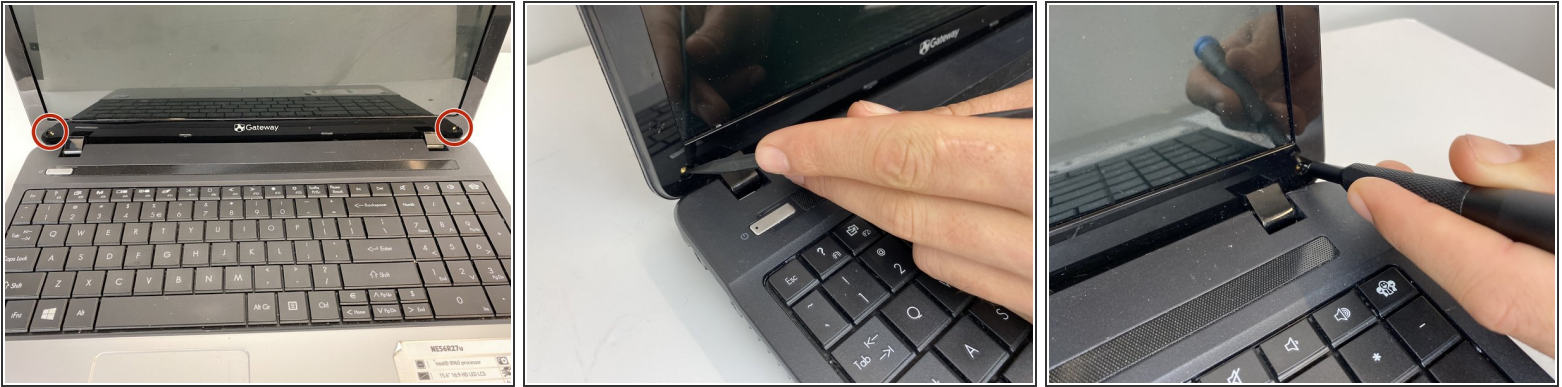
Step 2



- Lift the battery from its compartment.

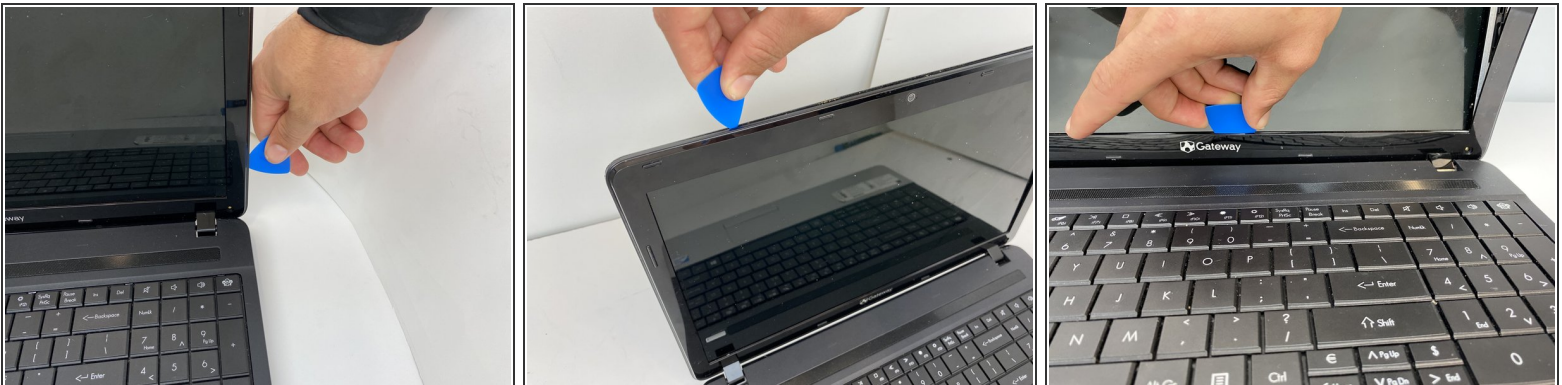
☑ When reinstalling, insert back end of battery first, then clicking into place.

Step 3 — Screen



- Using the spudger, remove the protective caps for the screen to expose the screws.
- Using the Phillips #000 screwdriver, unscrew the bottom two 1mm screws.

Step 4



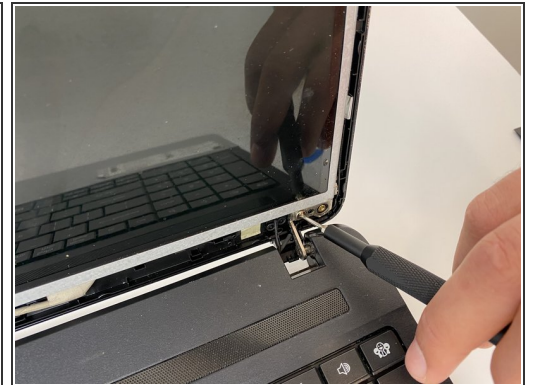
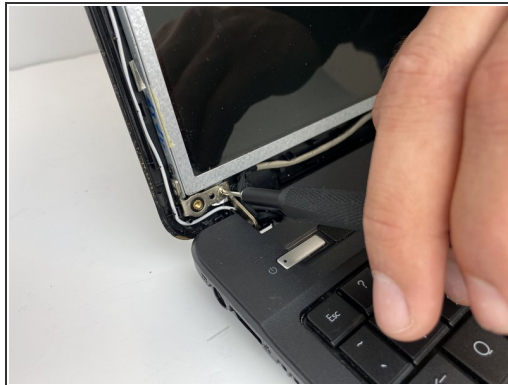
- Using the opening pick in between the front cover and bezel, gently loosen and lift the plastic bezel from the screen and backing.

Step 5



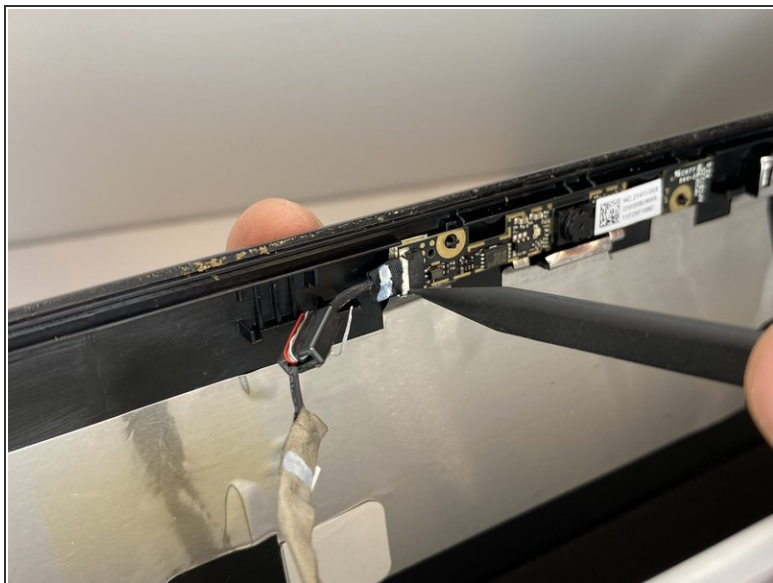
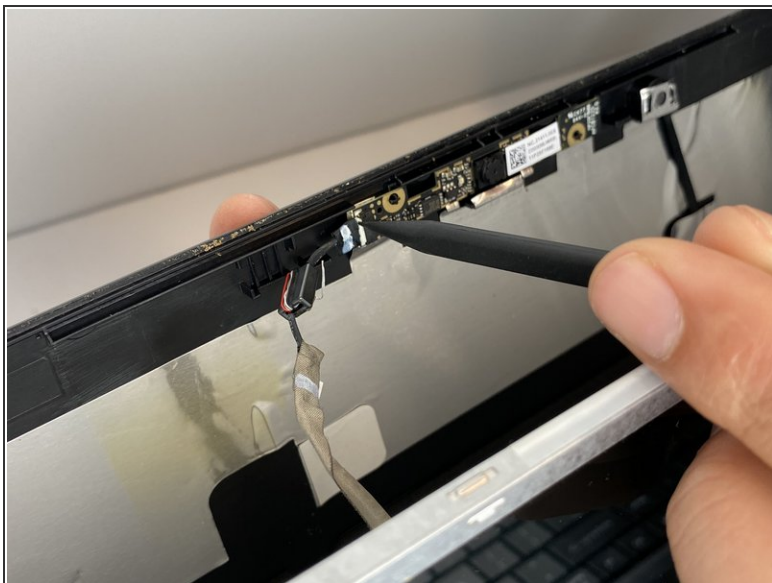
- Gently lift the frame of the screen from the top to unhook the frame from the base.
- ☒ When reassembling, hook the bottom of the screen to the base of the laptop before snapping into place.

Step 6



- Using the Phillips #000 screwdriver, unscrew the four 1 mm screws in the front corners of the metal frame.
- Lift the screen slightly to expose the connector board.

Step 7



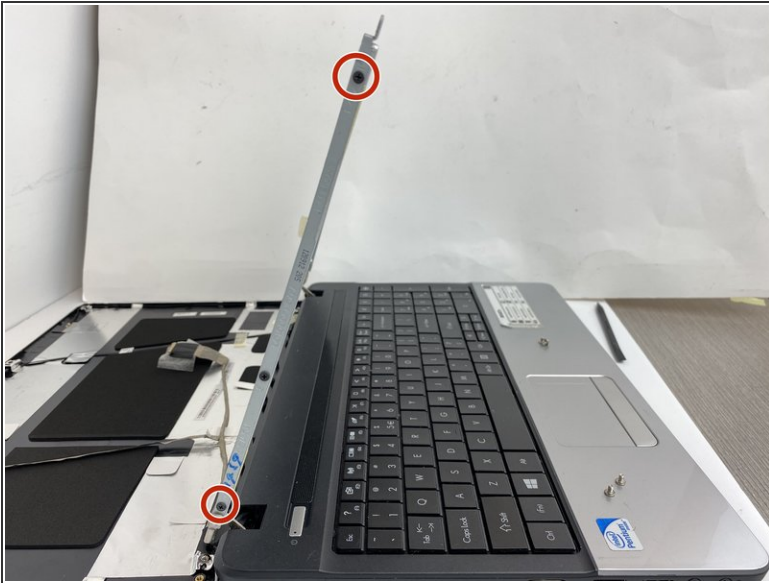
- Using the spudger, carefully remove the webcam connector from the metal frame.

Step 8



- Peel the tape covering the display cable, releasing the wire from the metal frame.
- Unplug the display cable from the image processing board on the screen.

Step 9



- Using the Phillips #000 screwdriver, unscrew the four 1 mm screws from the sides of the metal frame.
- Remove the screen from the metal frame.

To reassemble your device, follow these instructions in reverse order.