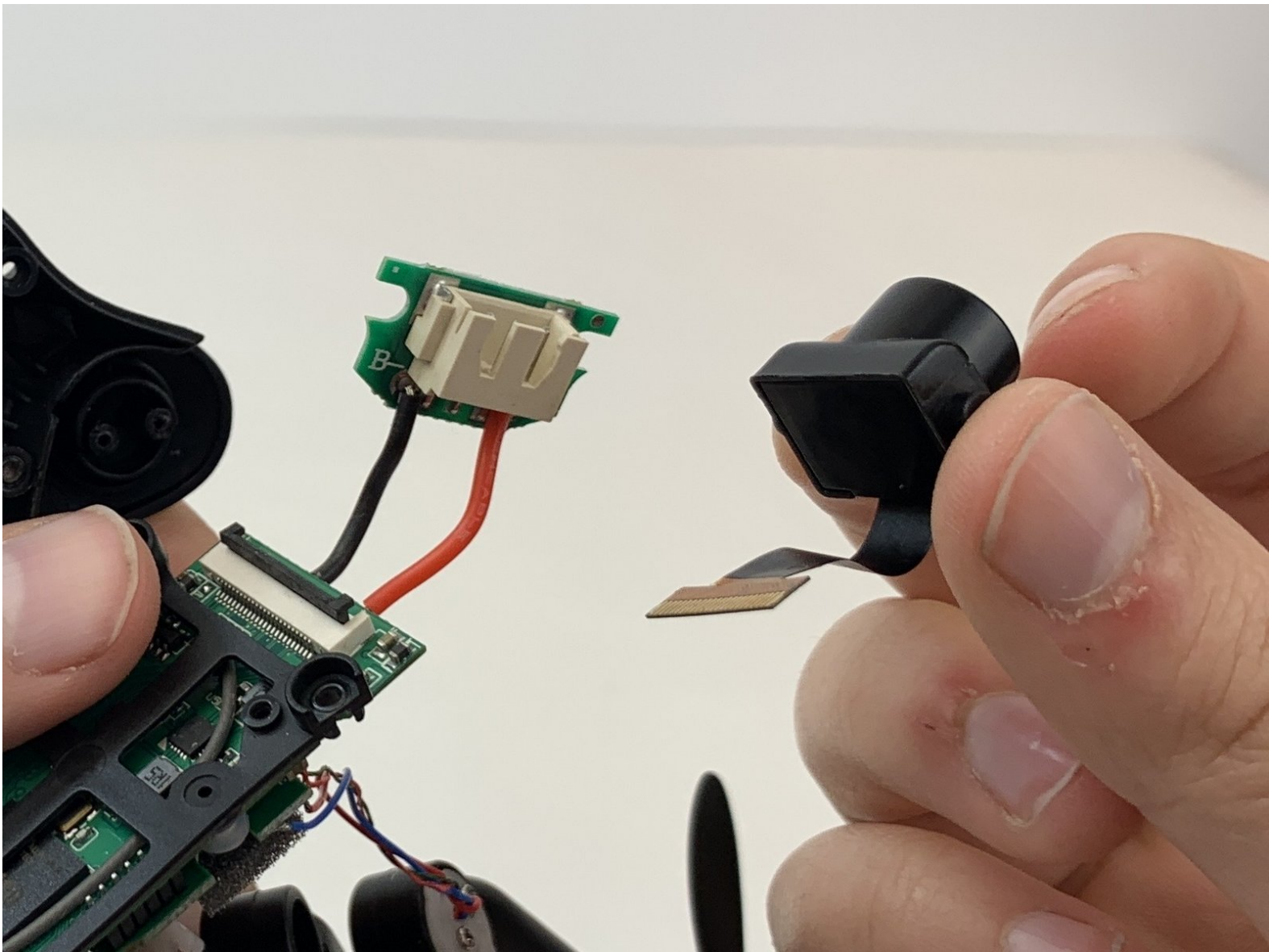




DROCON Ninja Camera Replacement

This guide will help the user replace the camera on the DROCON Ninja DC-014.

Written By: Destinee Easterly



INTRODUCTION

This guide will help you replace the camera on the DROCON Ninja DC-014. The drone's camera provides live video to the user while in flight. If you're unable to see the live video consider replacing the camera. To determine if the camera needs replacement check out the troubleshooting guide linked [here](#). Remember to remove the battery before beginning any work on the drone. An opening tool and a Phillips 00 screwdriver are required for this repair.




TOOLS:

- [Phillips #00 Screwdriver](#) (1)
 - [iFixit Opening Tools](#) (1)
-

Step 1 — Battery



 Make sure the drone is powered off before beginning the battery replacement.

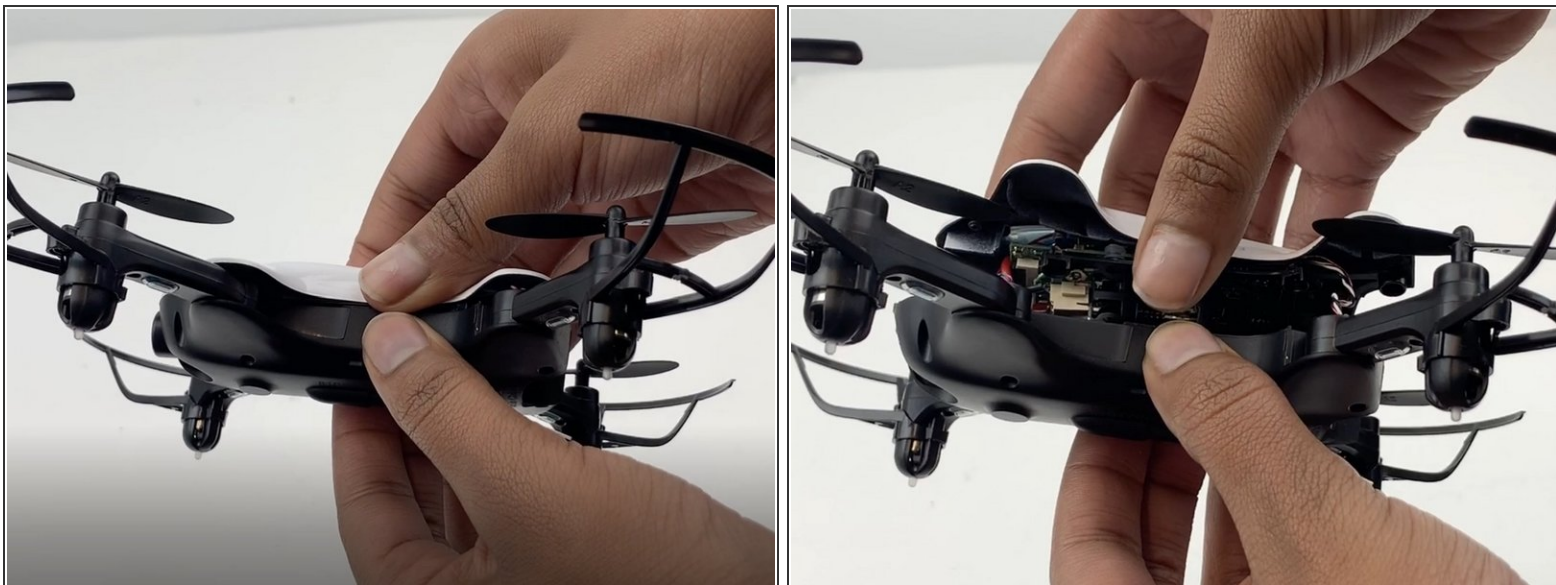
- To turn the drone off, press and hold the black button on the top of the drone until all lights are off.
- Firmly grasp the battery tab between your thumb and index finger.
- Pull the battery away from the drone's body

Step 2 — Casing



- Using a Phillips #00 Screwdriver remove the eight 4mm screws on the bottom of the drone.

Step 3



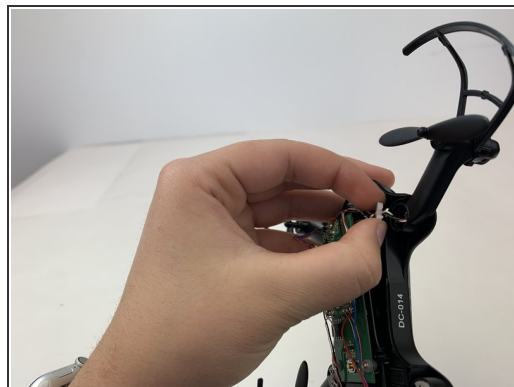
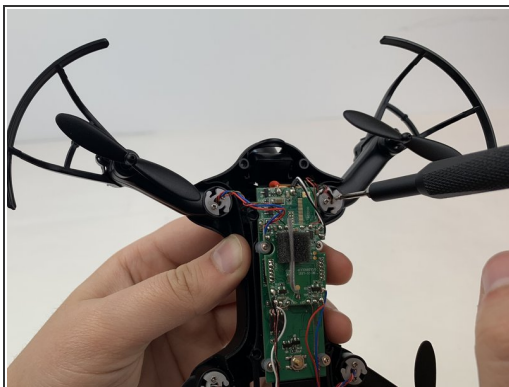
- Gently pull white casing away from the black bottom casing

Step 4



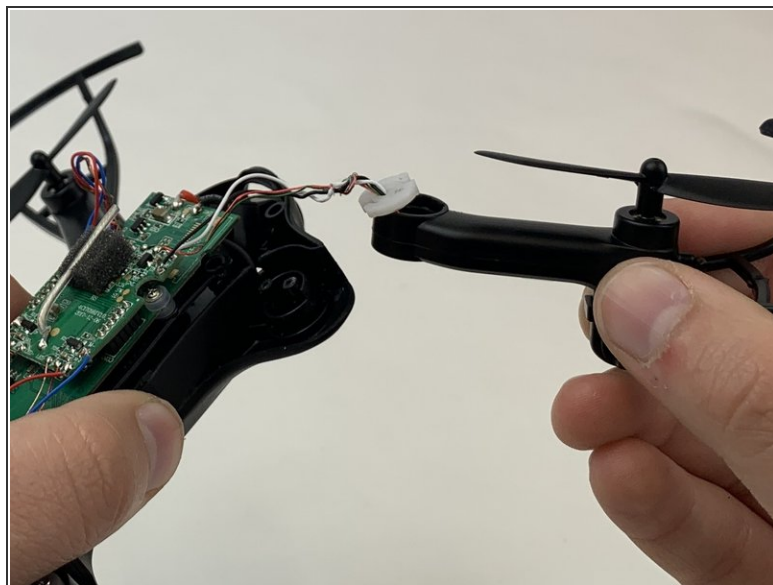
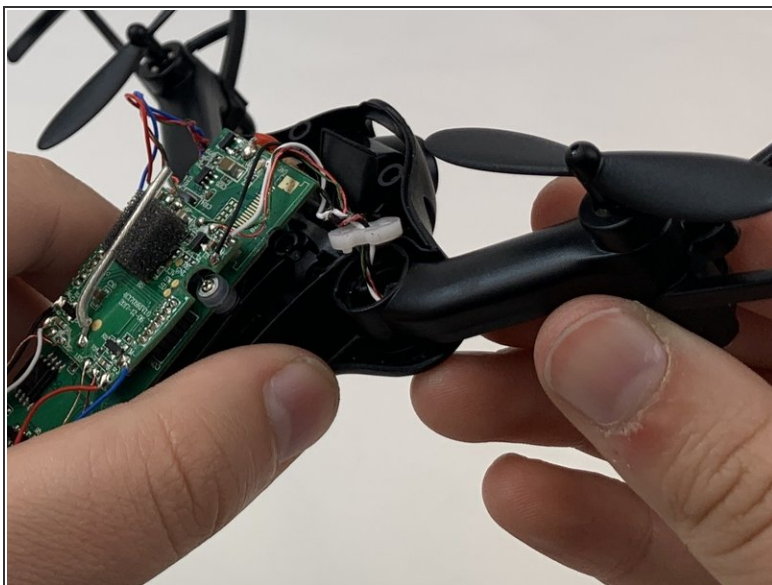
- Insert the opening tool under one of the black plastic connector slots that connects the circuit-board to the casing.
- Gently pull the opening tool toward you to disconnect the circuit-board from the plastic casing.

Step 5 — Camera



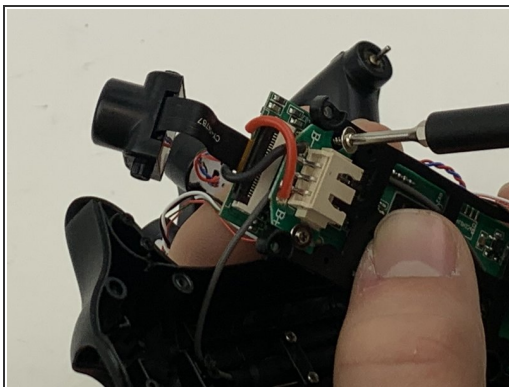
- Use a Phillips #00 screwdriver to remove the 5mm screws connecting the front two motor arms to the drone's body.
- Use your fingers to gently pull the white plastic discs out of the motor arms.

Step 6



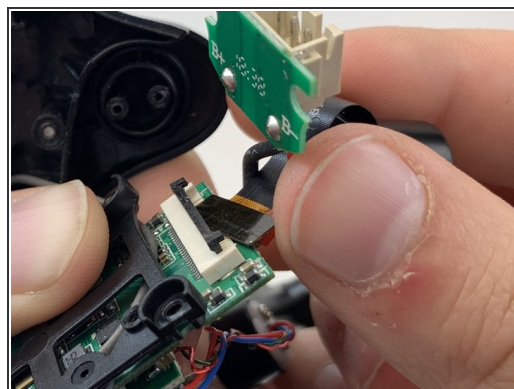
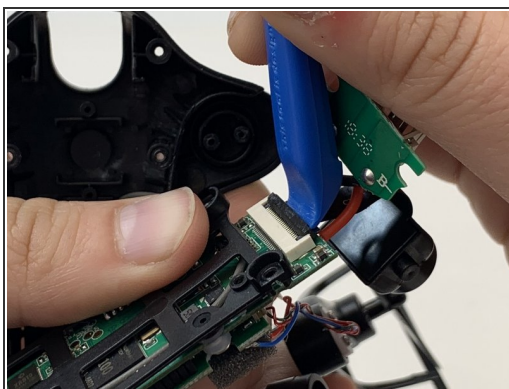
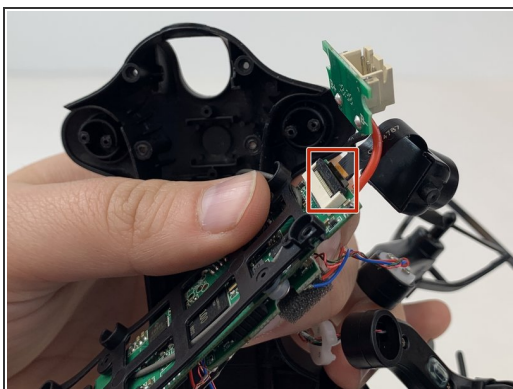
- Grasp the motor arm and pull up and away from the drone's body.
- Repeat this step for the other front motor arm.

Step 7



- Using the Phillips #00 screwdriver, remove the two 3mm screws on the control board.

Step 8



- Using the opening tool flip up the black plastic clamp that holds the camera wire to the circuit board.
- Gently pull the camera out from the control board.

To reassemble your device, follow these instructions in reverse order.