



Motorola Moto E6 Play Fingerprint Scanner Replacement

Use this guide to replace the fingerprint...

Written By: Archer Leida



INTRODUCTION

Use this guide to replace the fingerprint scanner in your Motorola Moto E6 Play phone (model). The fingerprint scanner is used to unlock the phone without the use of a password by recognizing the fingerprint pattern of an authorized user.

Before you begin, download the [Rescue and Smart Assistant](#) app to backup your device and diagnose whether your problem is software or hardware related.

Before using this guide, try [this forum](#), which contains suggestions for fixing the fingerprint scanner by entering safe mode or doing a factory reset. Keep in mind that this forum post is referring to the Moto G4 Plus, which is a slightly different phone. Despite this, the devices are similar enough for forum's suggestions to be helpful if you are experiencing a software issue. However, if your fingerprint scanner no longer functions due to a possible hardware issue, the physical component may need to be replaced.

Before beginning any repairs, completely power off the phone and disconnect it from any external power, like a charger.

TOOLS:

[Halberd Spudger](#) (1)


[Phillips #0 Screwdriver](#) (1)

[Tweezers](#) (1)

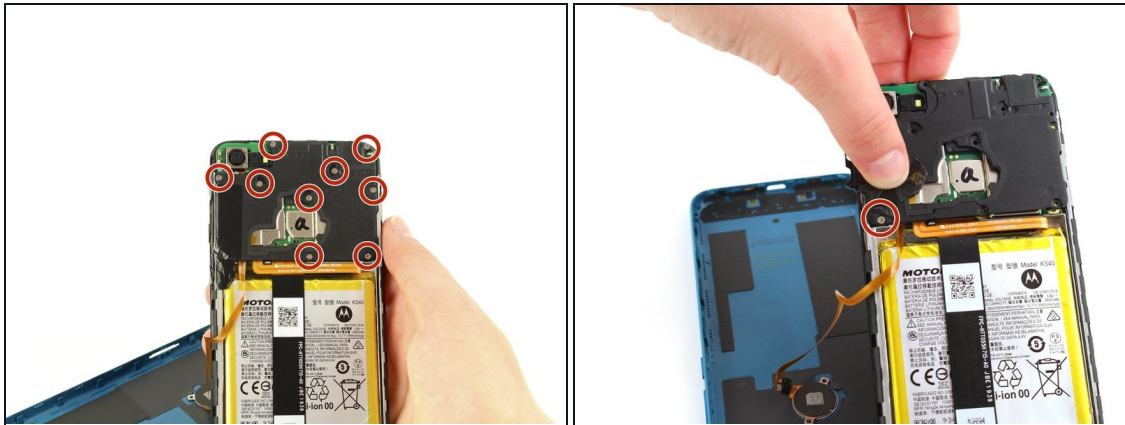
Step 1 — Back Cover



- Run the halberd spudger along the edges of the device. The back cover should easily pop off.

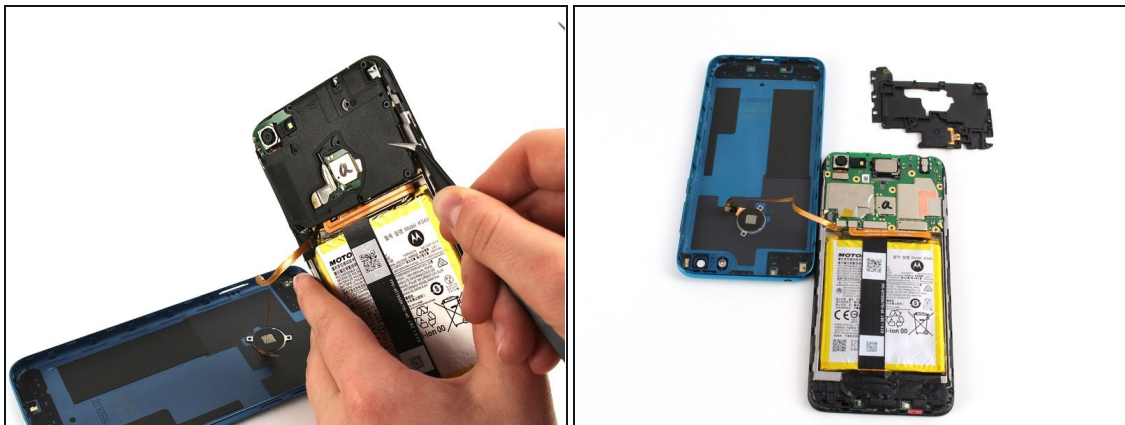
 Gently remove the back cover. Do not pull hard, as it is still connected to the fingerprint scanner inside the phone.

Step 2 — Circuit Board Covers



- To remove the cover on the motherboard, remove the 10 silver 3.90 mm Phillips screws attaching the cover to the board using the Phillips #0 screwdriver.
- ⓘ One of these ten screws is covered by black tape located at the bottom left corner of the black cover. Peel back the black tape to access this screw.

Step 3



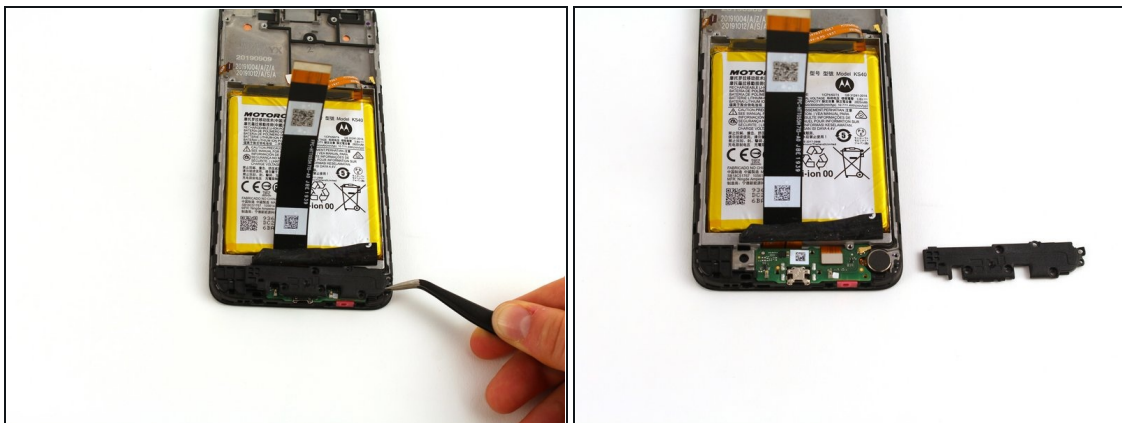
- With the angled tweezers, remove the black cover to reveal the motherboard underneath.
- ⚠ Remove the black piece cover with caution to avoid puncturing the motherboard with the tweezers.

Step 4



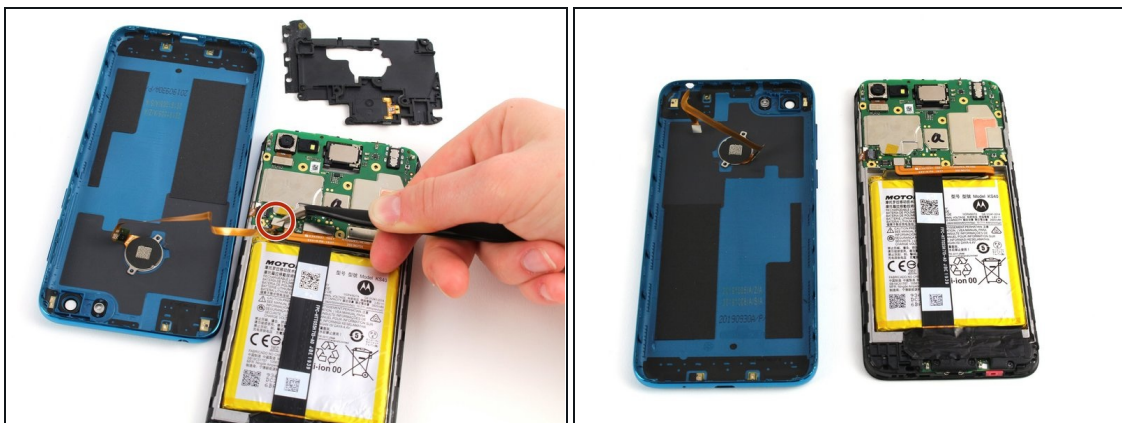
- The bottom plastic piece covering the daughterboard can be seen by peeling back the tape covering the bottom section of the phone below the battery.
- To remove the cover, unscrew the six black 3.45 mm Phillips screws holding the cover in place using the Phillips #0 screwdriver.

Step 5



- Remove the black cover piece using the angled tweezers.

Step 6 — Fingerprint Scanner



- Use the angled tweezers to pry off the metal head of the connecting piece from the main motherboard assembly.

Step 7



- Use the angled tweezers to pull up on the two tabs connecting the scanner to the back plastic panel, and disconnect the fingerprint scanner from the back of the device.
-

To reassemble your device, follow these instructions in reverse order.