



# Lenovo ThinkPad X1 Yoga 2nd Generation Pen Charging Port Replacement

Use this guide to replace the pen charging port in your Lenovo ThinkPad X1 Yoga 2nd Generation laptop.

Written By: Katrina Lee



This document was generated on 2020-11-28 07:59:02 AM (MST).

## INTRODUCTION

Before using this guide, check if your pen is inserted in the charging slot correctly or if it is chipped or damaged near the charging connector. You may also follow the guide through Step 3 to ensure that the charging wire has not been disconnected from the port on the circuit board. If it is, reconnect the wire and test the charging port.

If you have determined that the charging port is damaged or no longer charges the pen, replace the charging port with this guide. Use care when handling the ribbon cable to avoid damage to internal components.




### TOOLS:

- [Phillips #0 Screwdriver](#) (1)
  - [Metal Spudger](#) (1)
  - [Tweezers - Pro/ESD/Angled](#) (1)
-

## Step 1 — Back Cover



 Ensure the laptop is powered off and the charging cable is disconnected before opening the back cover.

- Flip over the laptop to access the back cover.

## Step 2



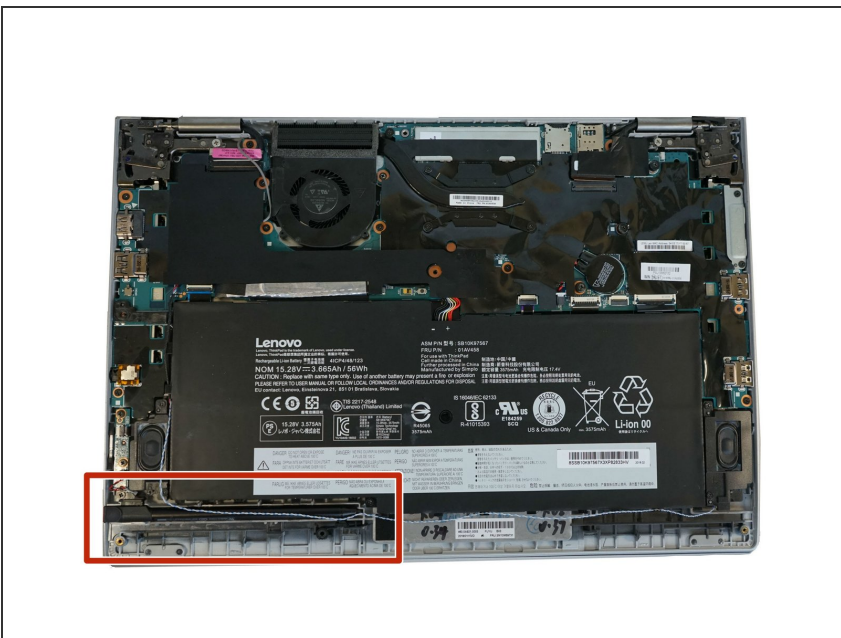
- Use a Phillips #0 screwdriver to remove the eight 8 mm screws.

## Step 3



- Remove the back cover.
- ⓘ A popping sound may occur when the back cover is removed.

## Step 4 — Pen Charging Port




- Remove the pen from its slot on the side of the laptop before removing the pen charging port.



## Step 5

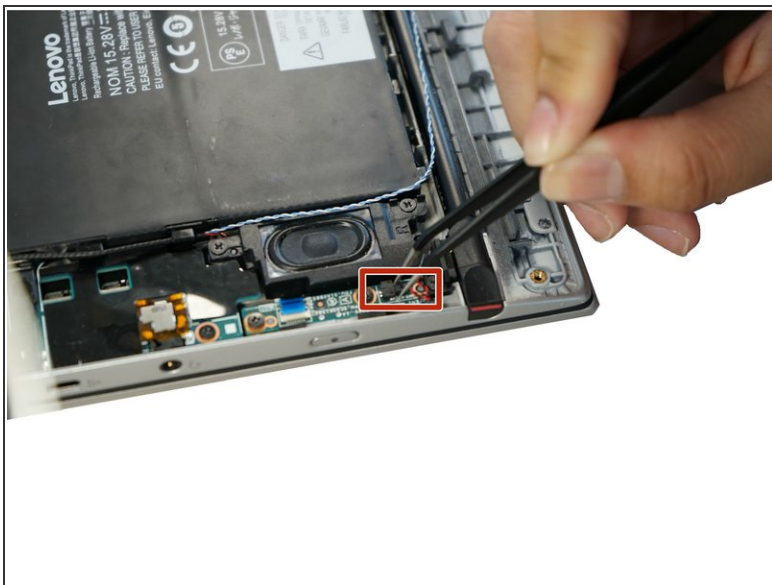


- Lift the tab with a spudger to expose the ribbon cable.

 Do not use the metal spudger unless if it's for serious prying power. The metal spudger may damage or puncture the internal components in your device, so please use a plastic opening tool or nylon spudger instead.

- Carefully pull out the ribbon cable using Pro/ESD/Angled tweezers.

## Step 6



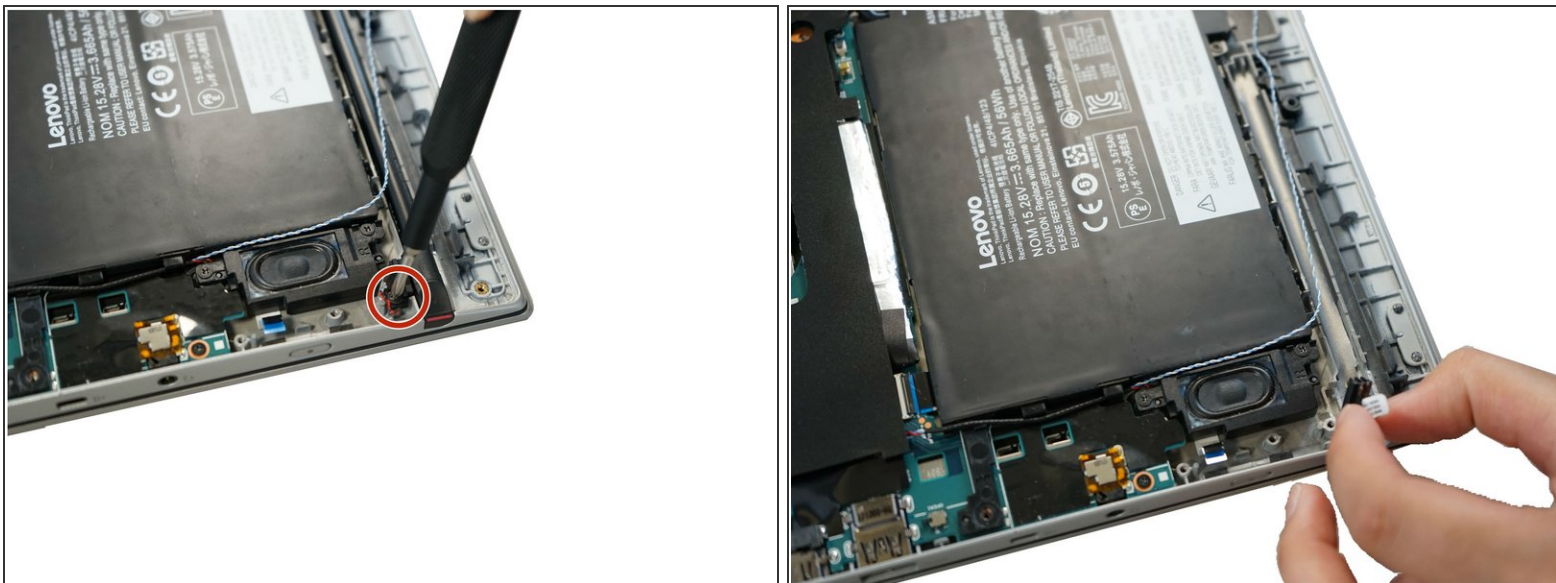
- Disconnect the red and black charger wire from the port on the circuit board.
- Remove two 4 mm screws using the Phillips #0 screwdriver.

## Step 7



- Remove the circuit board by hand.

## Step 8



- Remove a single 6 mm screw from the charging port using the Phillips #0 screwdriver.
- Remove the black charging port using your fingers.

To reassemble your device, follow these instructions in reverse order.