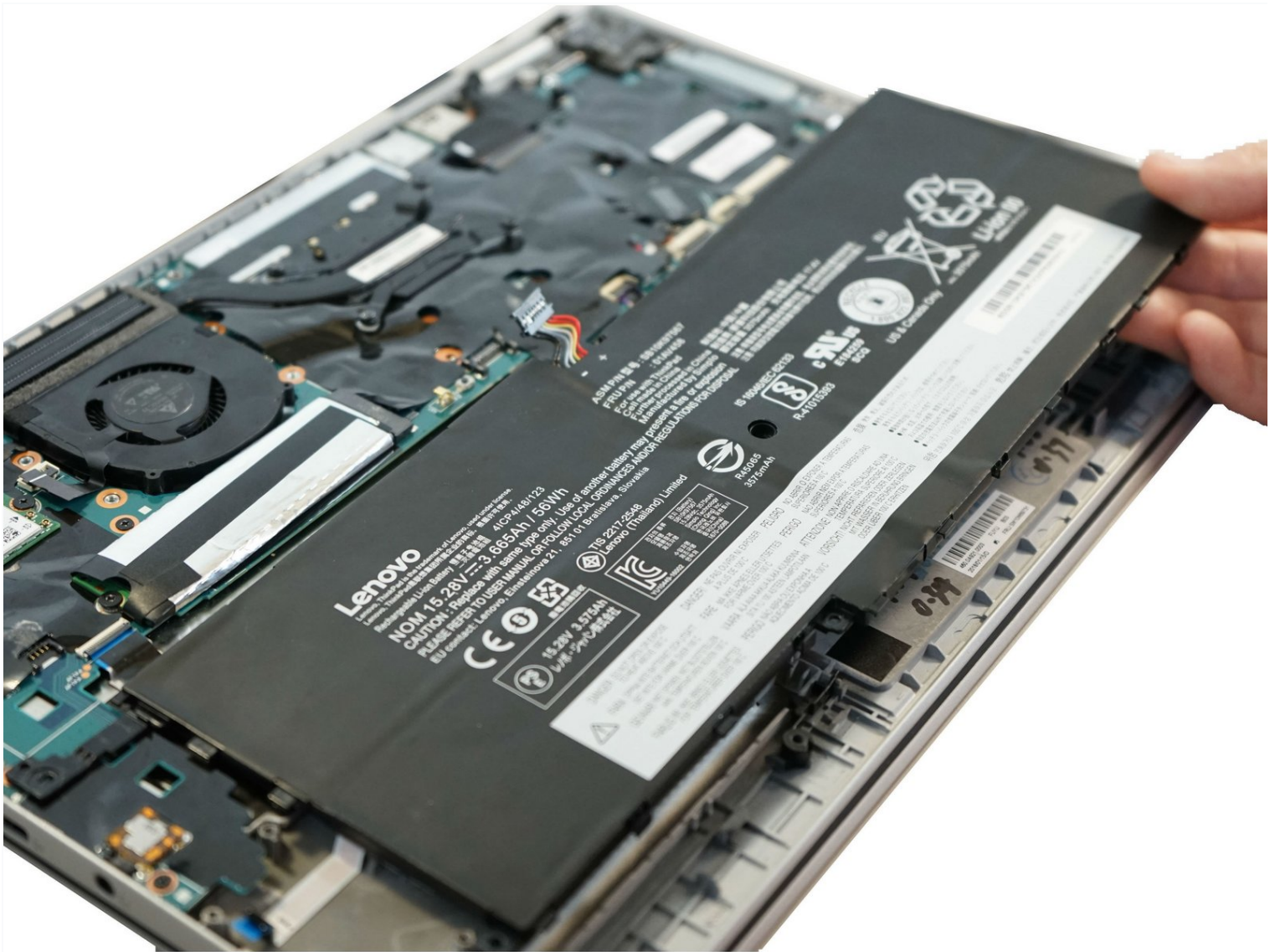




Battery Replacement

The battery is an essential component of the...

Written By: Ashley Haraguchi



INTRODUCTION

The battery is an essential component of the laptop and keeps the device running. Oftentimes, the battery will start wearing out after consistent use, and after a few years the battery may not hold a charge. If your device isn't properly charging or if your device is running out of charge quickly, the battery may need to be replaced.

Before replacing the battery, ensure your power adaptor is not the issue. To check if your adaptor is the problem, borrow and test a different adaptor. If the laptop charges during the test, you need to replace your power adaptor. If you have determined that your battery is faulty, follow this guide to replace it. Removing the battery is also necessary before removing the touch ID.

TOOLS:


[Tweezers](#) (1)
[Phillips #0 Screwdriver](#) (1)
[Metal Spudger](#) (1)

PARTS:

[Lenovo 01AV409 56Wh Battery](#) (1)
[Lenovo 00HW028 52Wh Battery](#) (1)

Step 1 — Back Cover



 Ensure the laptop is powered off and the charging cable is disconnected before opening the back cover.

- Flip over the laptop to access the back cover.

Step 2



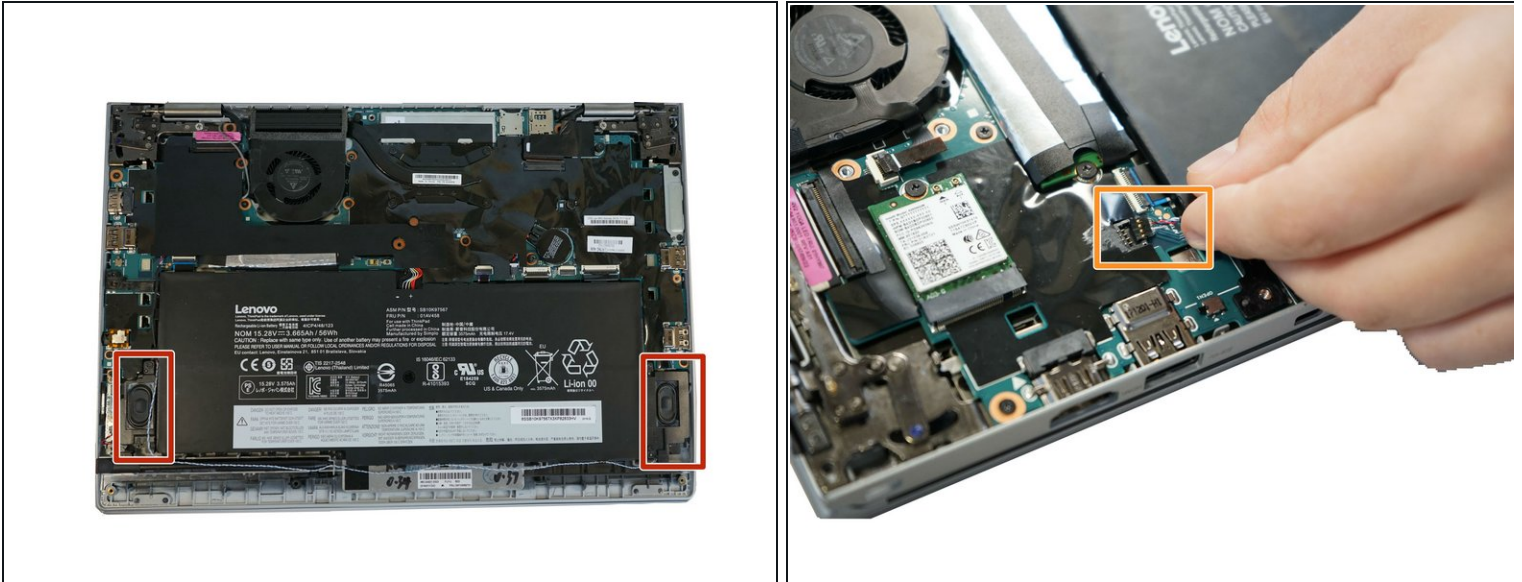
- Use a Phillips #0 screwdriver to remove the eight 8 mm screws.

Step 3



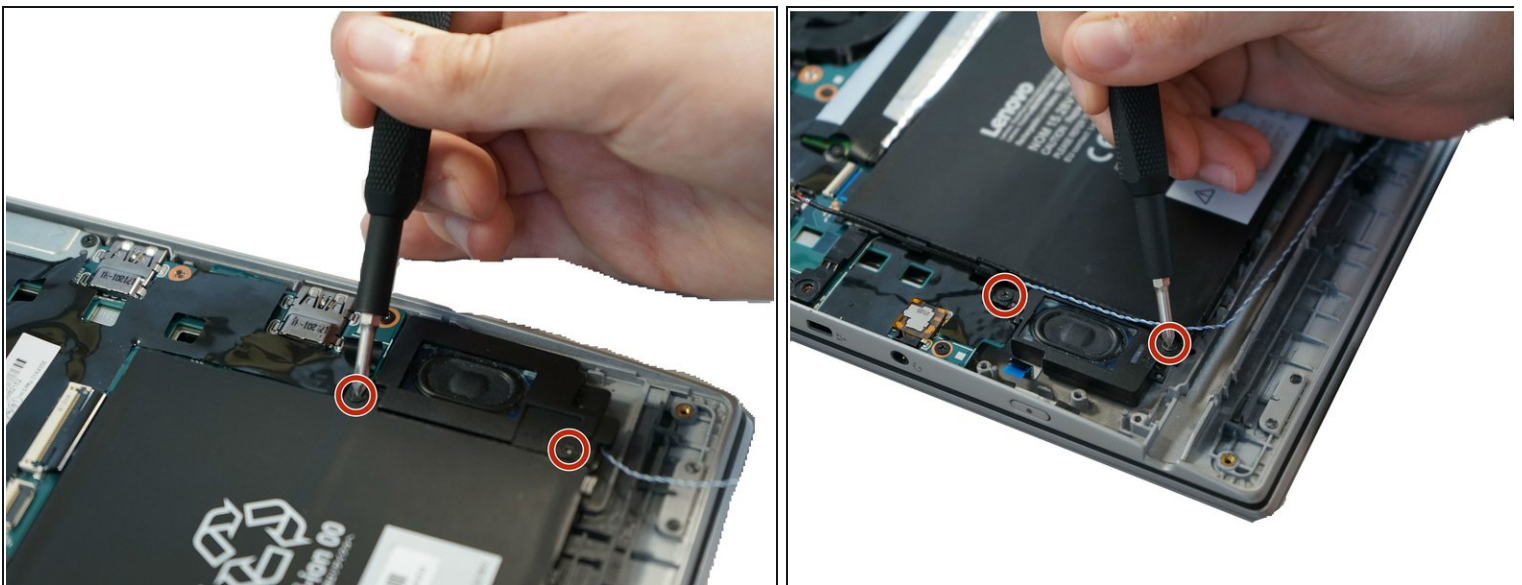
- Remove the back cover.
 - ⓘ A popping sound may occur when the back cover is removed.

Step 4 — Speakers



- Follow the ribbon cable that runs from the left speaker to the motherboard.
- Pull the black connector up and release the cable wire by hand.
- ⓘ If needed, pull this connector up using the Pro/ESD/Angled tweezers.

Step 5



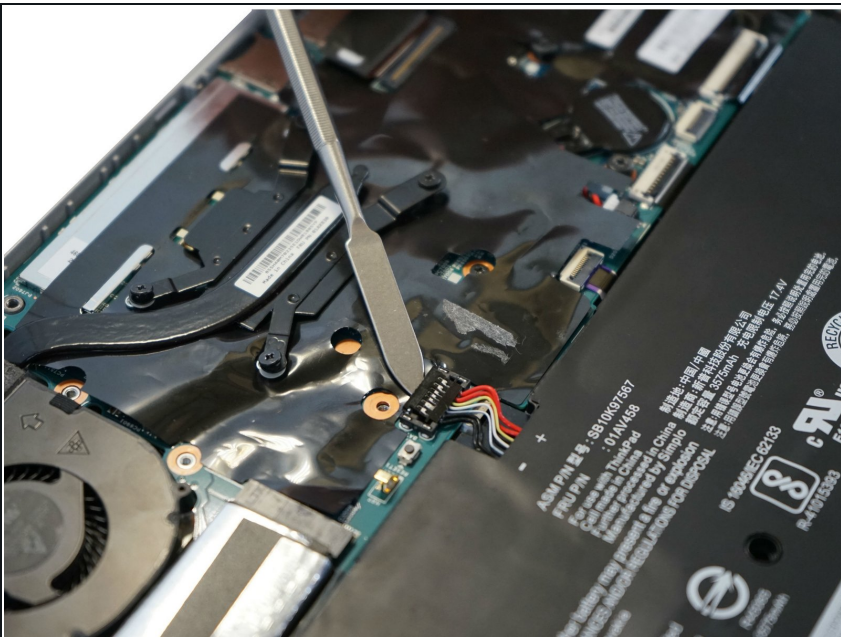
- Remove two 6 mm Phillips #0 screws from each speaker.

Step 6



- Use your fingers to remove the speakers from the device.

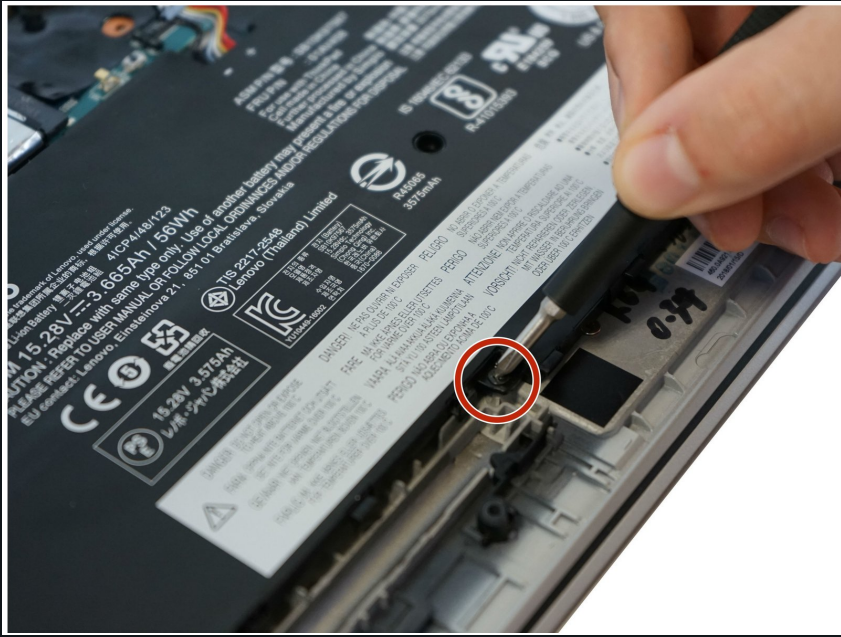
Step 7 — Battery



- Use a spudger to pop the ribbon cable that runs from the upper-middle portion of the battery to the motherboard out of the motherboard.

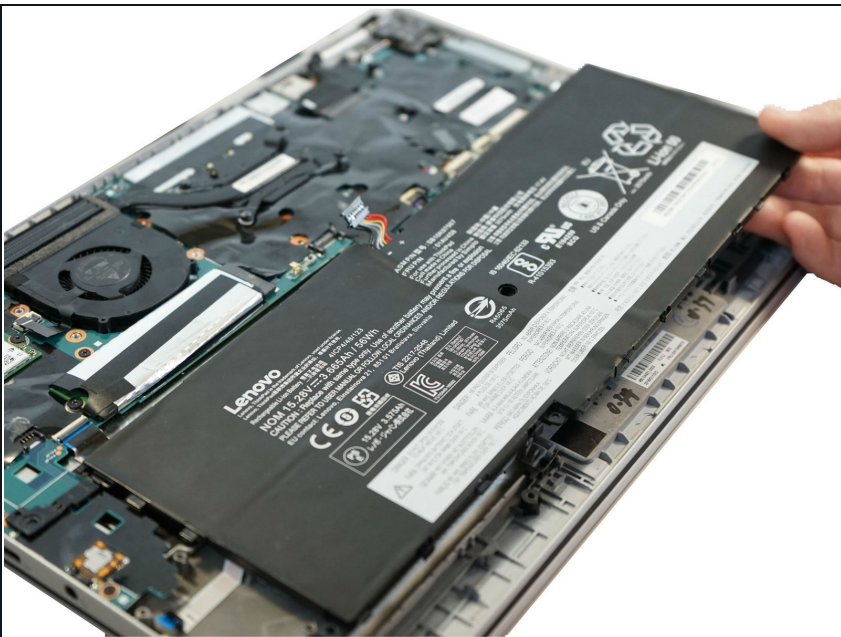
⚠ Do not use a metal spudger as indicated in the photos. The metal spudger should only be used for serious prying power. If it's used on the internal components of a device, it may puncture or damage the components in your device.

Step 8



- Use a Phillips #0 screwdriver to remove one 6 mm screw from the bottom-middle portion of the battery.

Step 9



- Remove the battery.

To reassemble your device, follow these instructions in reverse order.