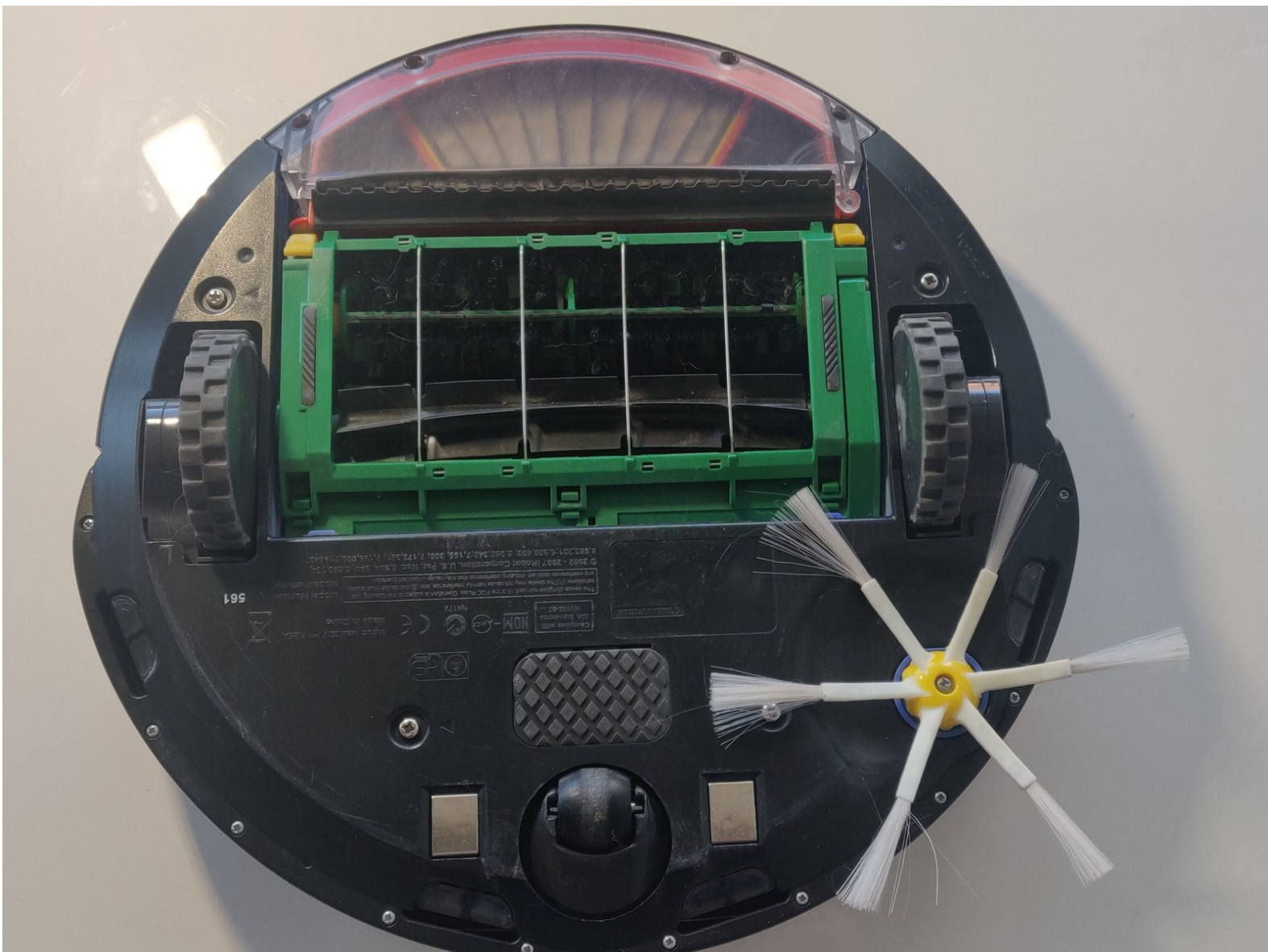




iRobot Roomba 560 Motherboard Replacement

Roomba 560 motherboard/mainboard replacement. How to disassemble the Roomba 560 to reach the mainboard.

Written By: Max Lembke



INTRODUCTION

Replacing the motherboard is a long process and needs to be carried out carefully to avoid damaging the device irreparably. Proceed with caution when handling the connectors.



TOOLS:

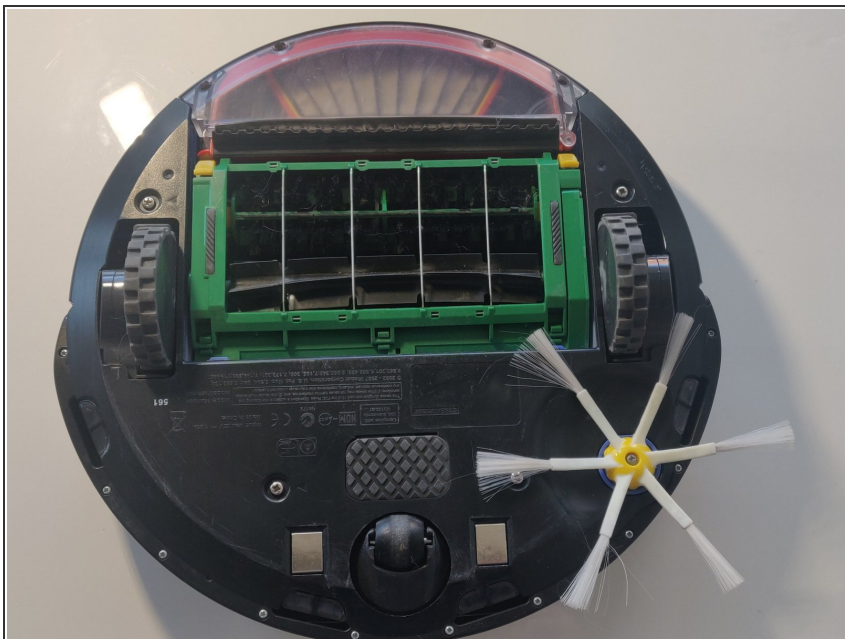
- [Pro Tech Toolkit](#) (1)



PARTS:

- [Roomba 560 Motherboard](#) (1)

Step 1 — Start



- Rotate the Roomba so the bumper is in front of you.

Step 2 — Wheel Removal



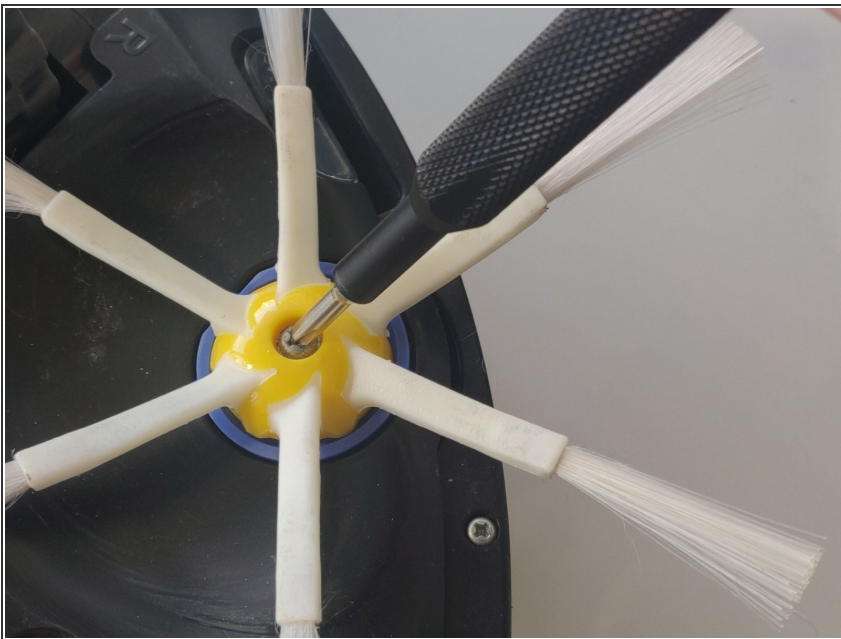
- Remove the wheel using a spudger. You can probably also do this with your hand depending on how dirty the wheel is.

Step 3 — Wheel Removal



- Remove the wheel guiding inlay using the spudger or your hand.

Step 4 — Remove Main Brush



- Remove the main brush by unscrewing the single 5 mm screw on the yellow side sweeper using the Phillips #1 driver.
- Once the screw is removed, lift out the brush and store the screw and brush.

Step 5 — Accessing the Battery



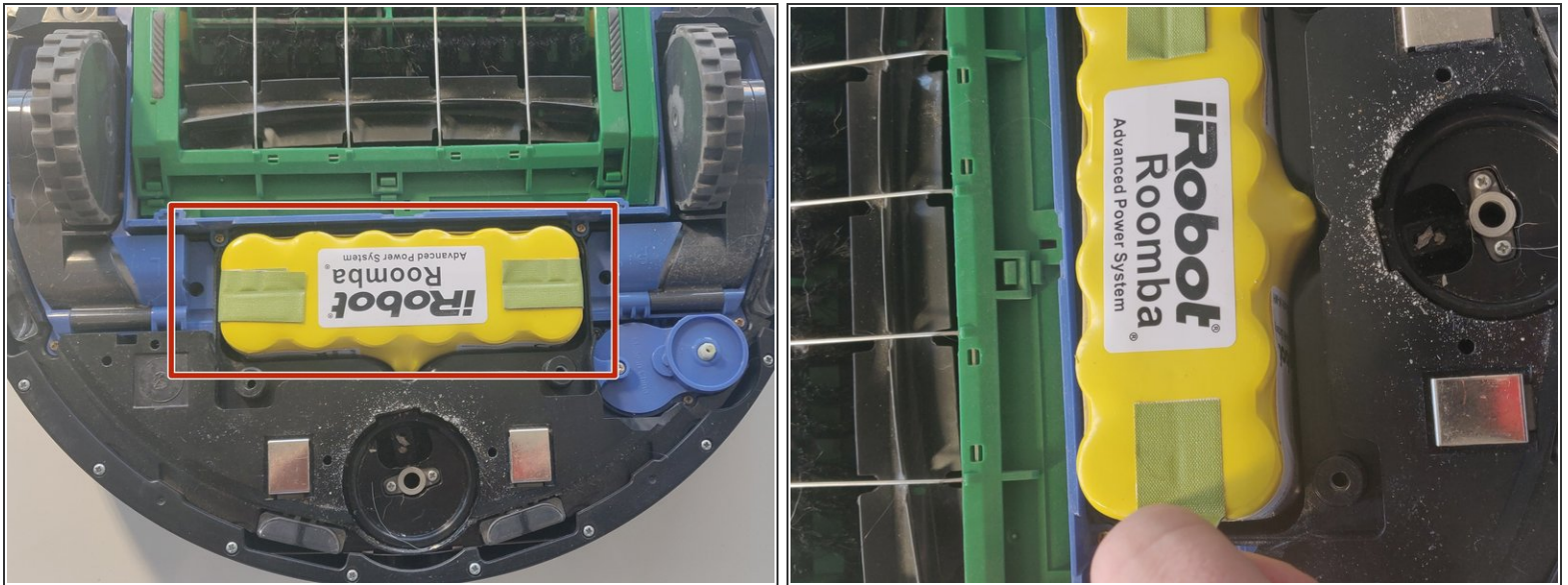
- Using the Phillips #1 driver, remove the four 10 mm screws that hold the back panel in place.
- Once the four screws are removed, store them safely and lift up the back panel.

Step 6 — Remove the Vacuum-tray



- Remove the vacuum tray to have an easier repair.

Step 7 — Removing the Battery



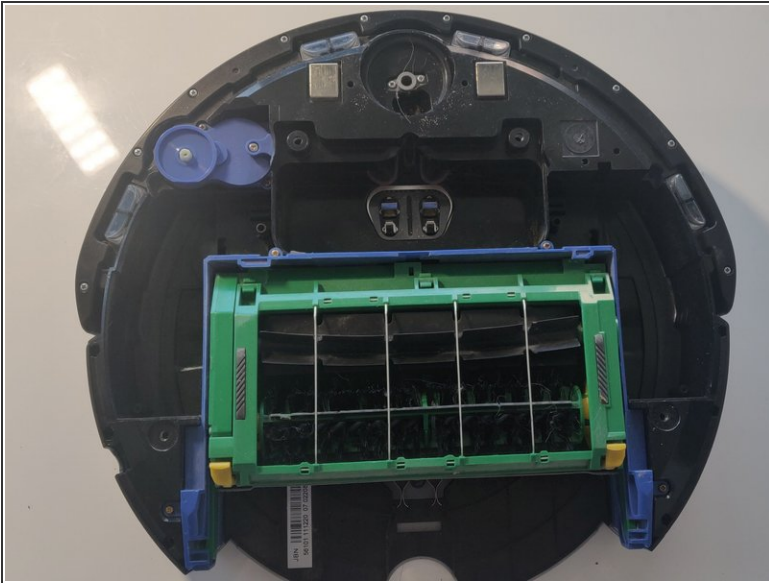
- Locate the battery.
- Lift up the yellow battery by pulling up the green tabs on its side.
- **Handle the battery with care.**

Step 8 — Removing the wheels.



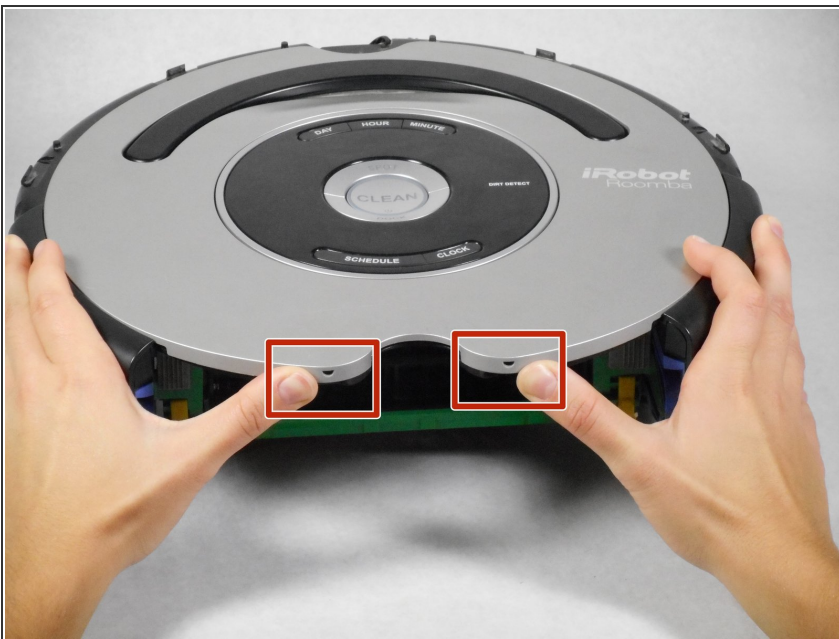
- Using the Phillips #1 driver, remove the three screws that hold back the wheel unit on each side. This is not required but will make the repair easier.
- Lift out the wheel units and store safely.
- Repeat on the other side.

Step 9 — Prepare for the mainboard extraction



- Check that the unit now looks like this and all the parts are removed.
- Flip the unit around.

Step 10 — Unhook front panel



- Use your hands to unhook the snaps between the silver panel from the black panel located where the vacuum bin was.

Step 11 — Remove top panel



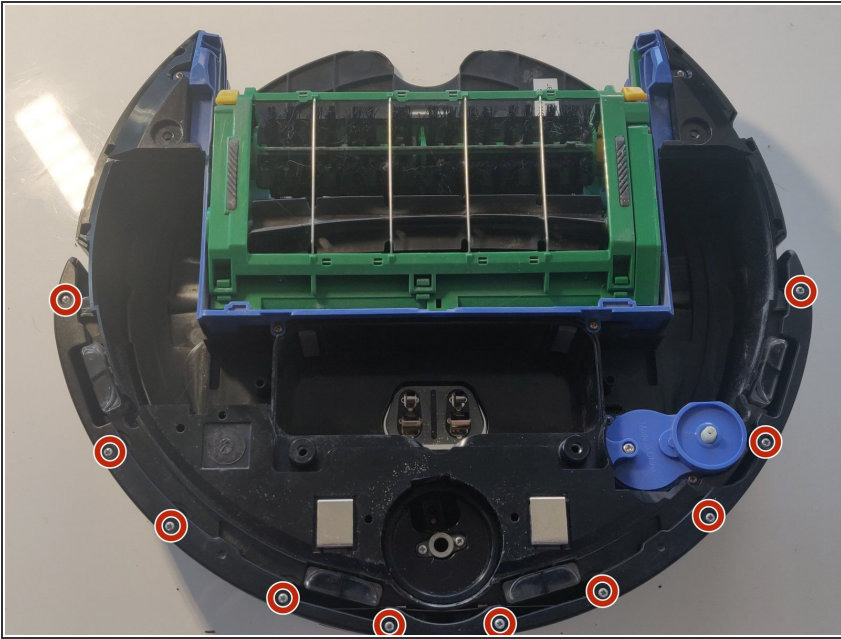
- Using the ifixit spudgers pry under the main silver panel.

Step 12 — Panel removal



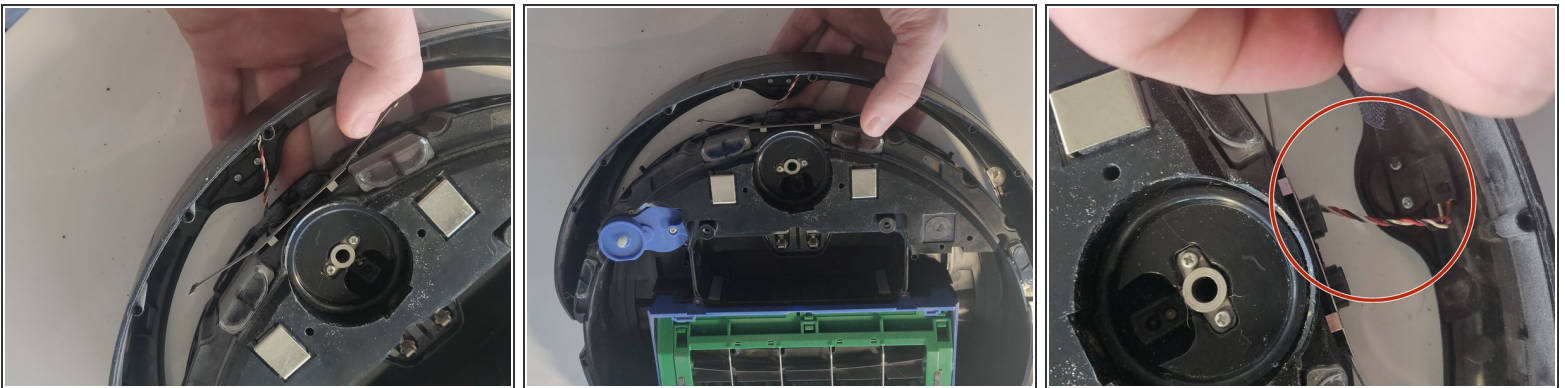
- Lift off the panel.

Step 13 — Remove front bumper



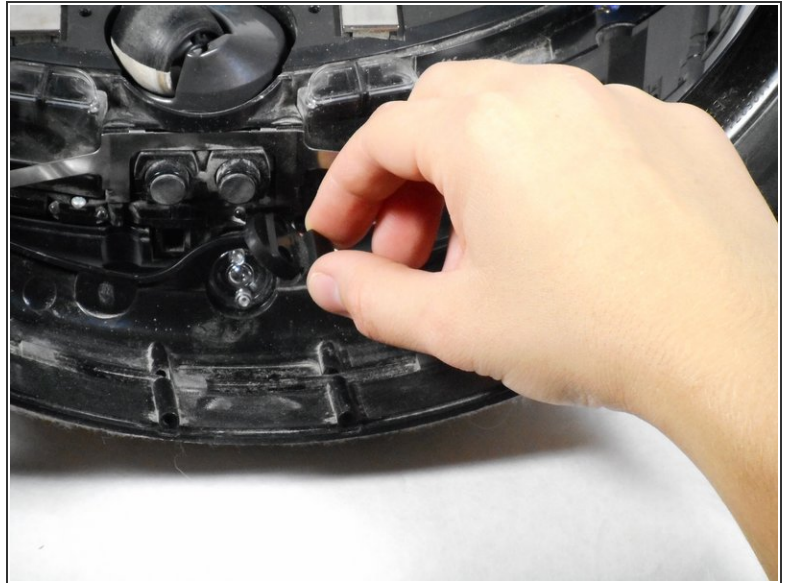
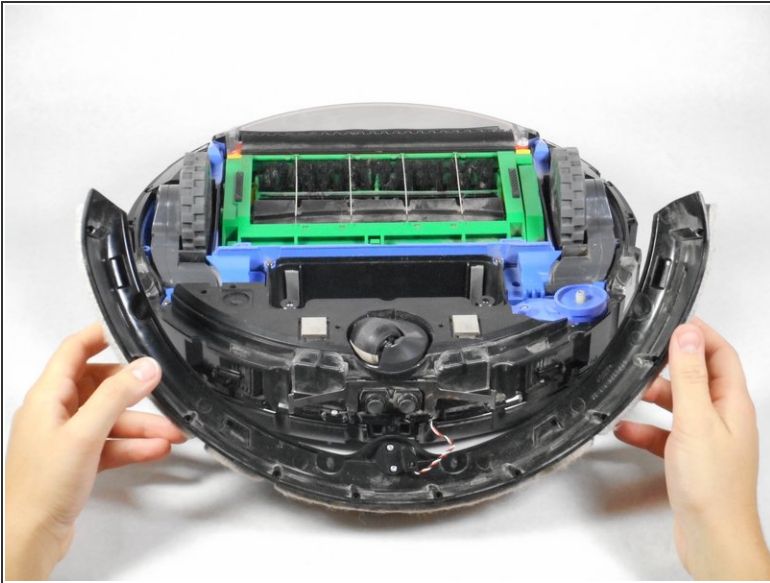
- Turn the unit around again and locate the 10 screws on the front bumper.
- Using the Phillips #1 driver, remove the ten 10 mm screws on the bumper that run along the outer edge of the Roomba.

Step 14 — Lift off bumper



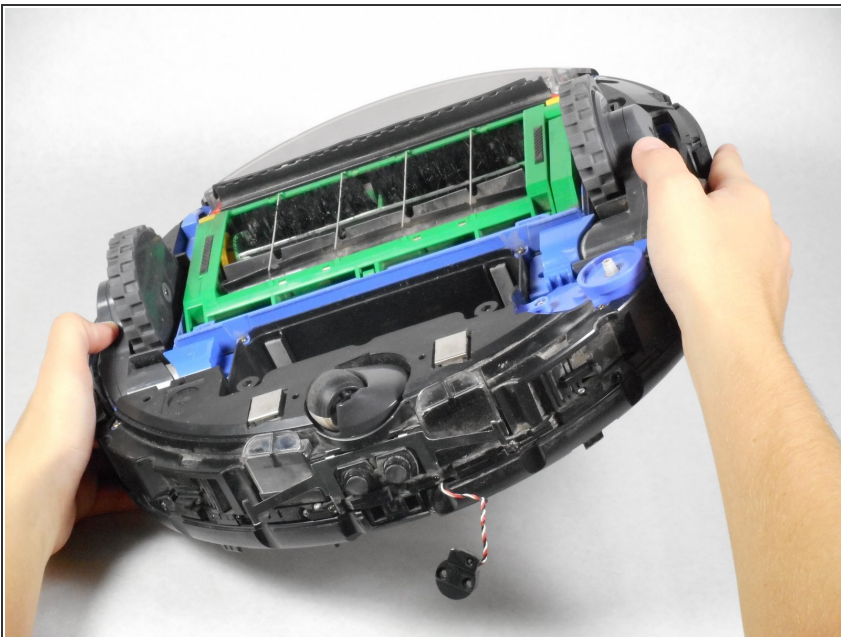
- Lift the thin top cover that holds the bumper in place.
- Be very vigilant with the attached sensor. Otherwise you risk ripping off the cable and damaging the entire sensor.

Step 15 — Unscrew sensor



- Lift the bumper upwards for easier access.
- Unscrew the two 5 mm screws that connect the red and white wires to the device using the Phillips #1 driver.
- Lift the circular black panel off the sensor housing.

Step 16 — Turn



- Turn the unit back around.

Step 17 — Remove top screws



- Using the Phillips #1 driver, unscrew the following 13 screws that hold the black panel in place:
 - Two 5 mm on the bottom ends of the semicircle handle.
 - Ten 7.5 mm scattered on the Roomba.
 - One 5 mm at the bottom of control board.

Step 18 — Lift panel off



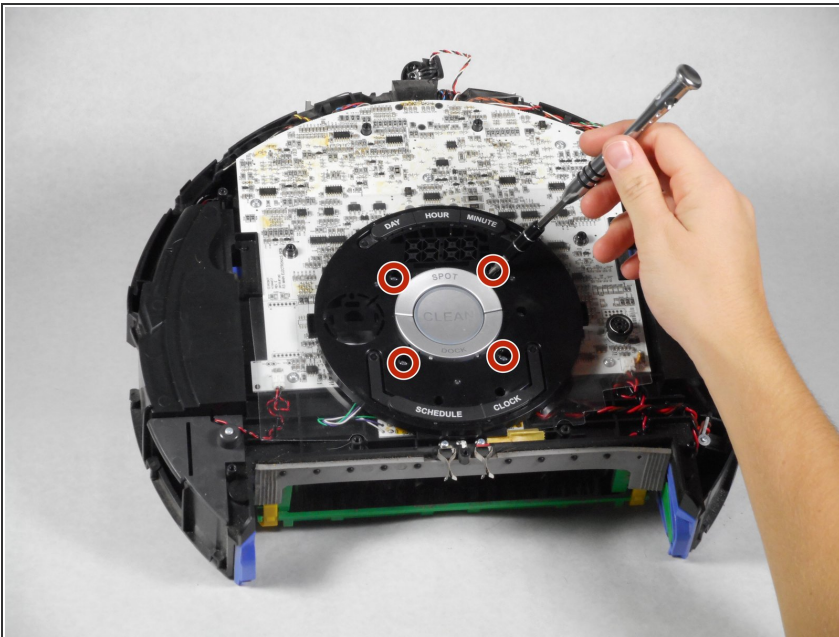
- Lift the black panel off the device.

Step 19 — Mainboard access



- Remove the outer silver circle, black plastic cover, and black film from the central control board in that order.

Step 20 — Control board removal



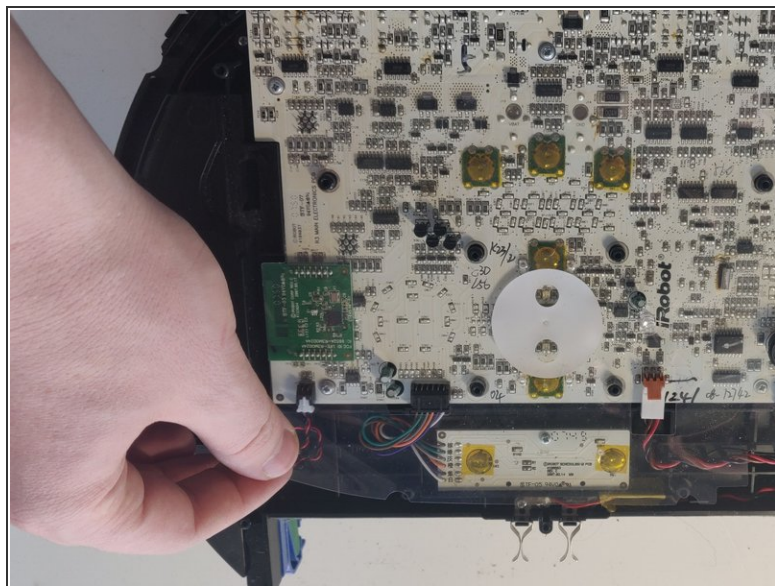
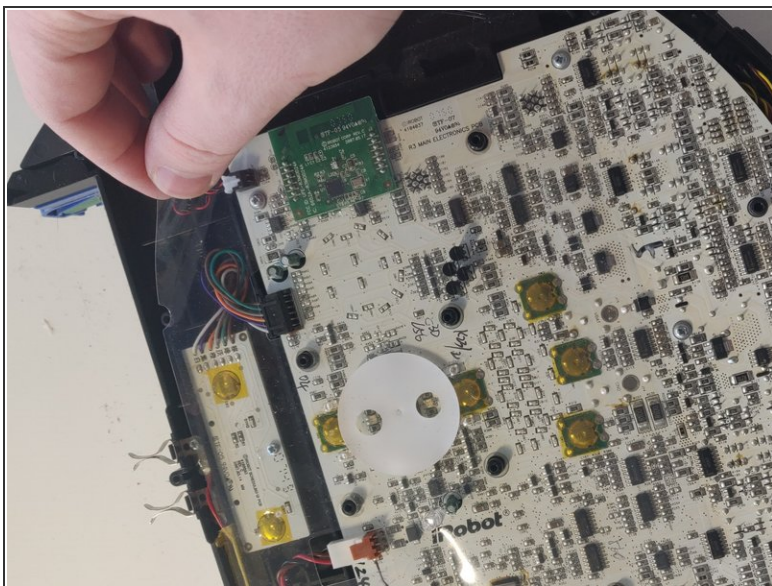
- Using the Phillips #1 driver, unscrew the four 10 mm screws that surround the clean button.

Step 21 — Remove panel



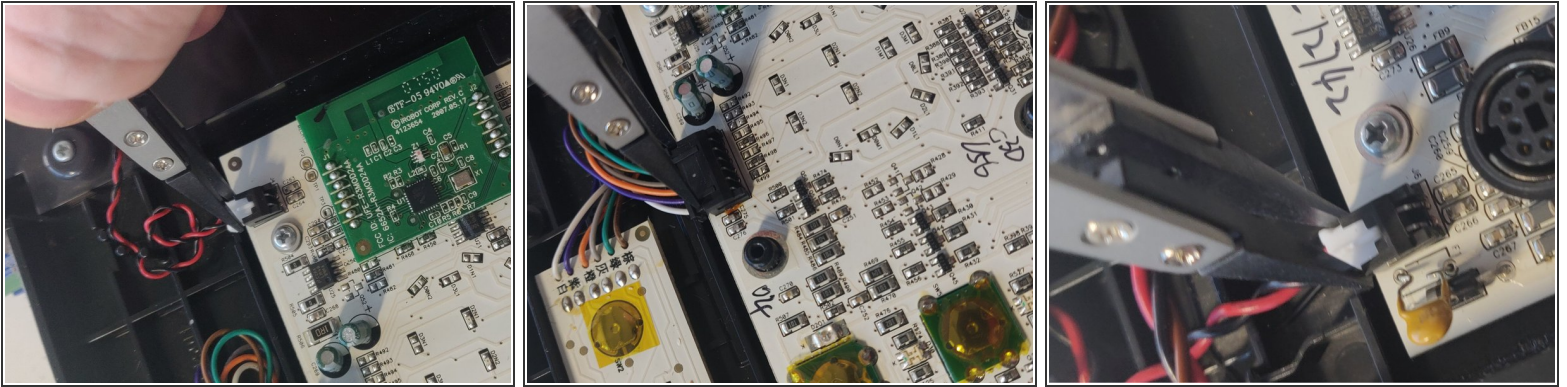
- Lift off the panel.

Step 22 — Remove the protective sheet



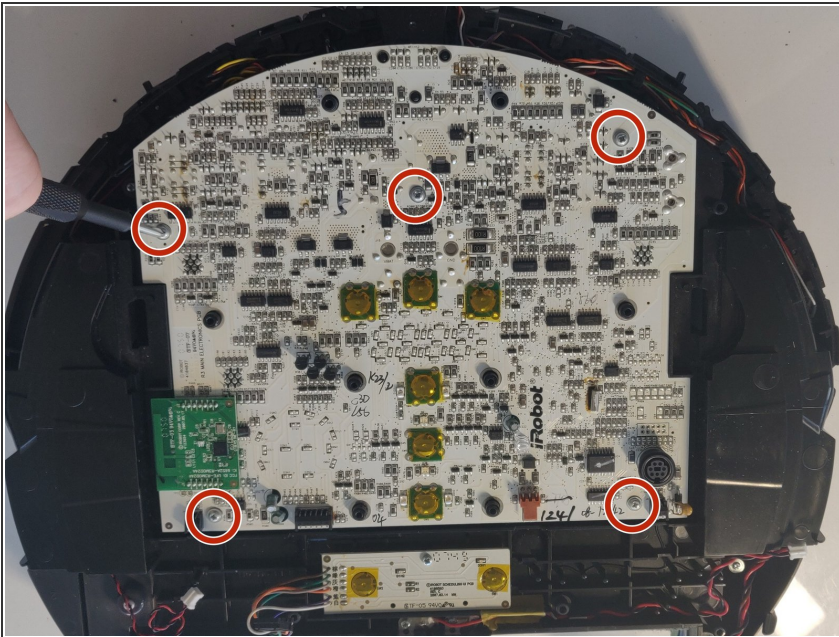
- Lift off the plastic sheet.

Step 23 — Remove the connectors



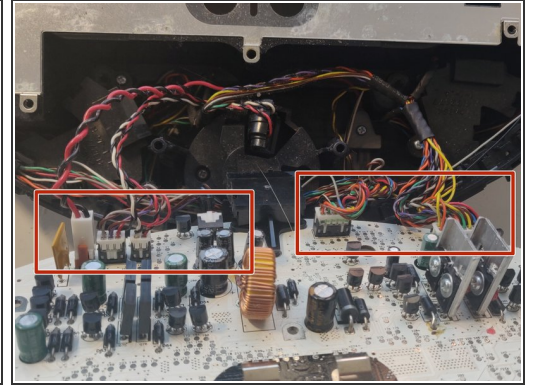
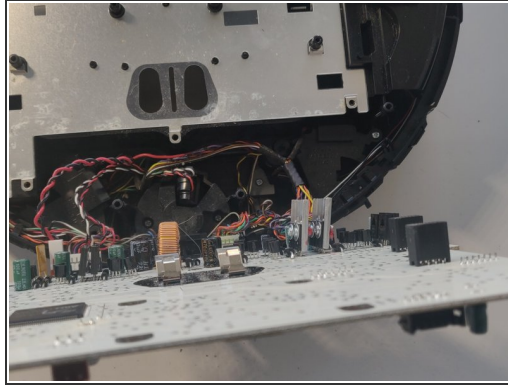
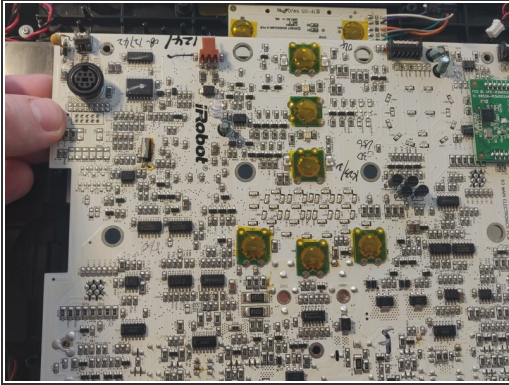
- Remove all the top connectors to the mainboard.
- You can use ifixit's reverse pliers but you can also use your hands.

Step 24 — Remove mainboard screws



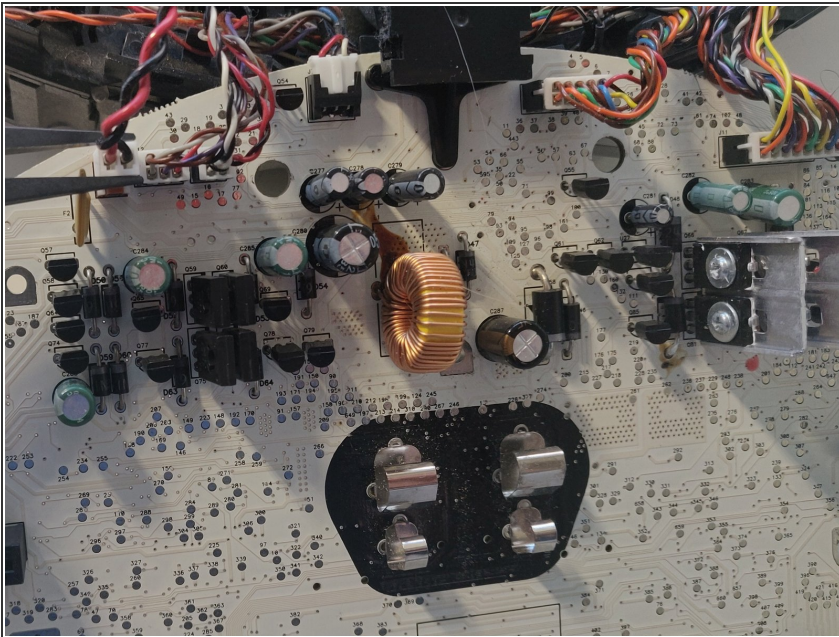
- Using the Phillips #1 driver, unscrew the five screws on the mainboard.
- **Do not rip out mainboard now!**

Step 25 — Lift off mainboard carefully



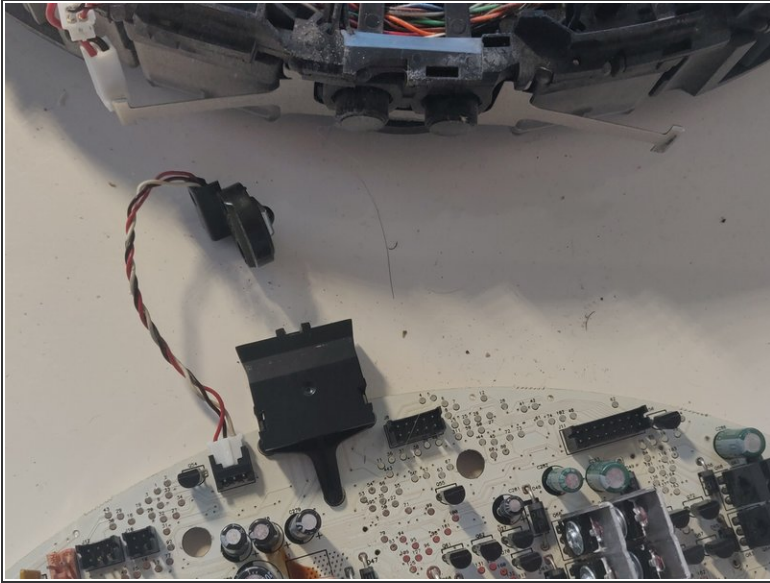
- Carefully lift off the mainboard, moving it towards you.
- Be very careful with the connected connectors.

Step 26 — Remove connectors



- Very carefully disconnect the connections off the mainboard.
- You can use iFixit's reverse pliers.

Step 27 — Remove sensor and replace board



- The sensor might still be attached/is not attached to the main unit but mainboard. Just unplug it.
- You can now replace the mainboard and complete the steps from the bottom up to finish the replacement.

To reassemble your device, follow these instructions in reverse order.