



Motorola Moto E6 Play Circuit Board Covers Replacement

The inner circuit board covers inside the...

Written By: Charlie Priebe



INTRODUCTION

The inner circuit board covers inside the Motorola Moto E6 Play phone protect the two circuit boards, including the motherboard. They need to be removed in order to access several different components of the phone, including both cameras, the fingerprint scanner, and the battery.

Before you begin, download the [Rescue and Smart Assistant](#) app to backup your device and diagnose whether your problem is software or hardware related.

TOOLS:

[Halberd Spudger](#) (1)

[Phillips #0 Screwdriver](#) (1)

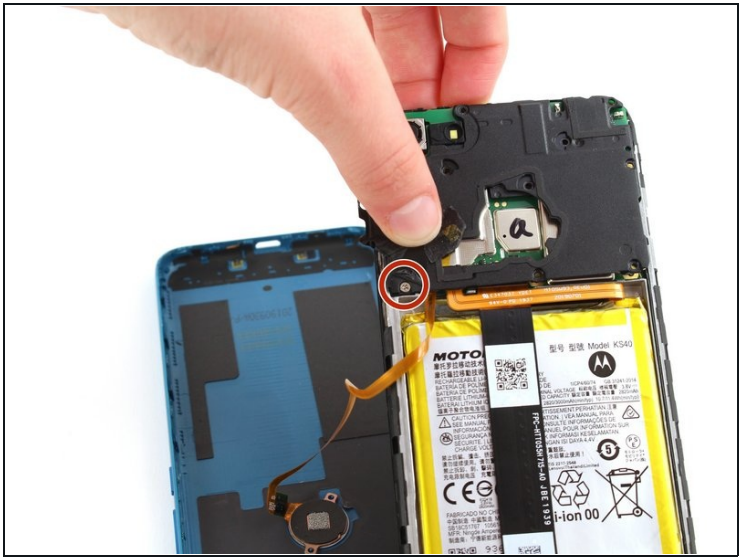
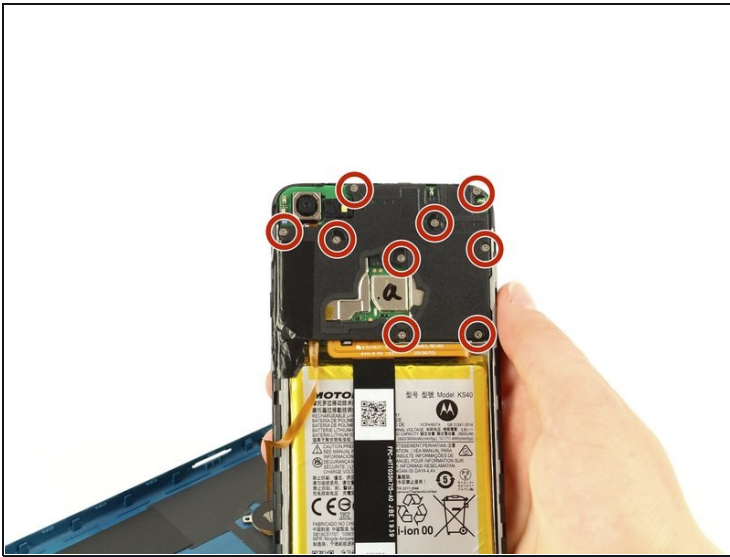
Step 1 — Back Cover



- Run the halberd spudger along the edges of the device. The back cover should easily pop off.

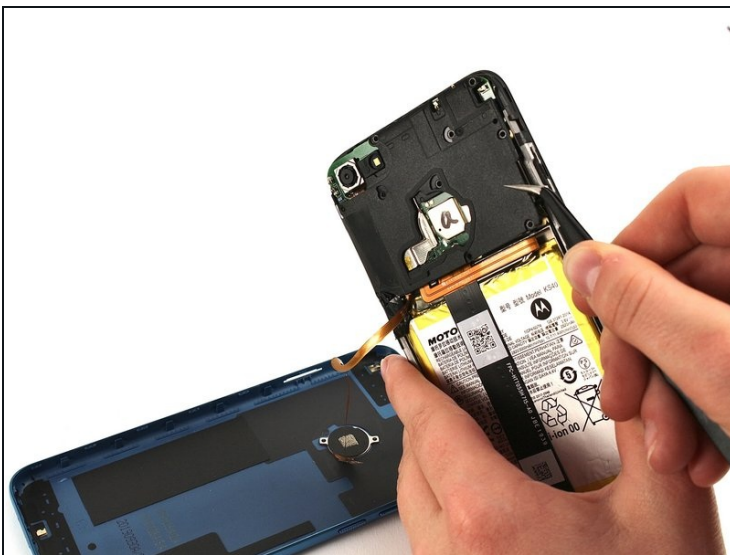
 Gently remove the back cover. Do not pull hard, as it is still connected to the fingerprint scanner inside the phone.

Step 2 — Circuit Board Covers



- To remove the cover on the motherboard, remove the 10 silver 3.90 mm Phillips screws attaching the cover to the board using the Phillips #0 screwdriver.
- ① One of these ten screws is covered by black tape located at the bottom left corner of the black cover. Peel back the black tape to access this screw.

Step 3



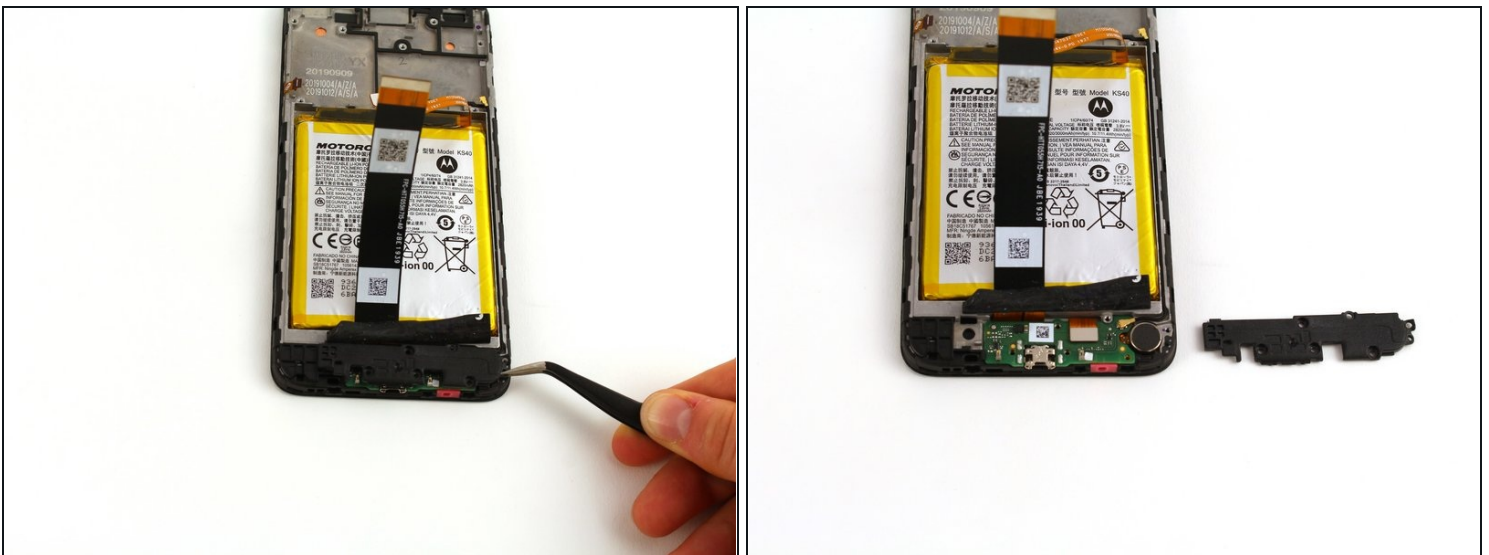
- With the angled tweezers, remove the black cover to reveal the motherboard underneath.
- ⚠ Remove the black piece cover with caution to avoid puncturing the motherboard with the tweezers.

Step 4



- The bottom plastic piece covering the daughterboard can be seen by peeling back the tape covering the bottom section of the phone below the battery.
- To remove the cover, unscrew the six black 3.45 mm Phillips screws holding the cover in place using the Phillips #0 screwdriver.

Step 5



- Remove the black cover piece using the angled tweezers.

To reassemble your device, follow these instructions in reverse order.