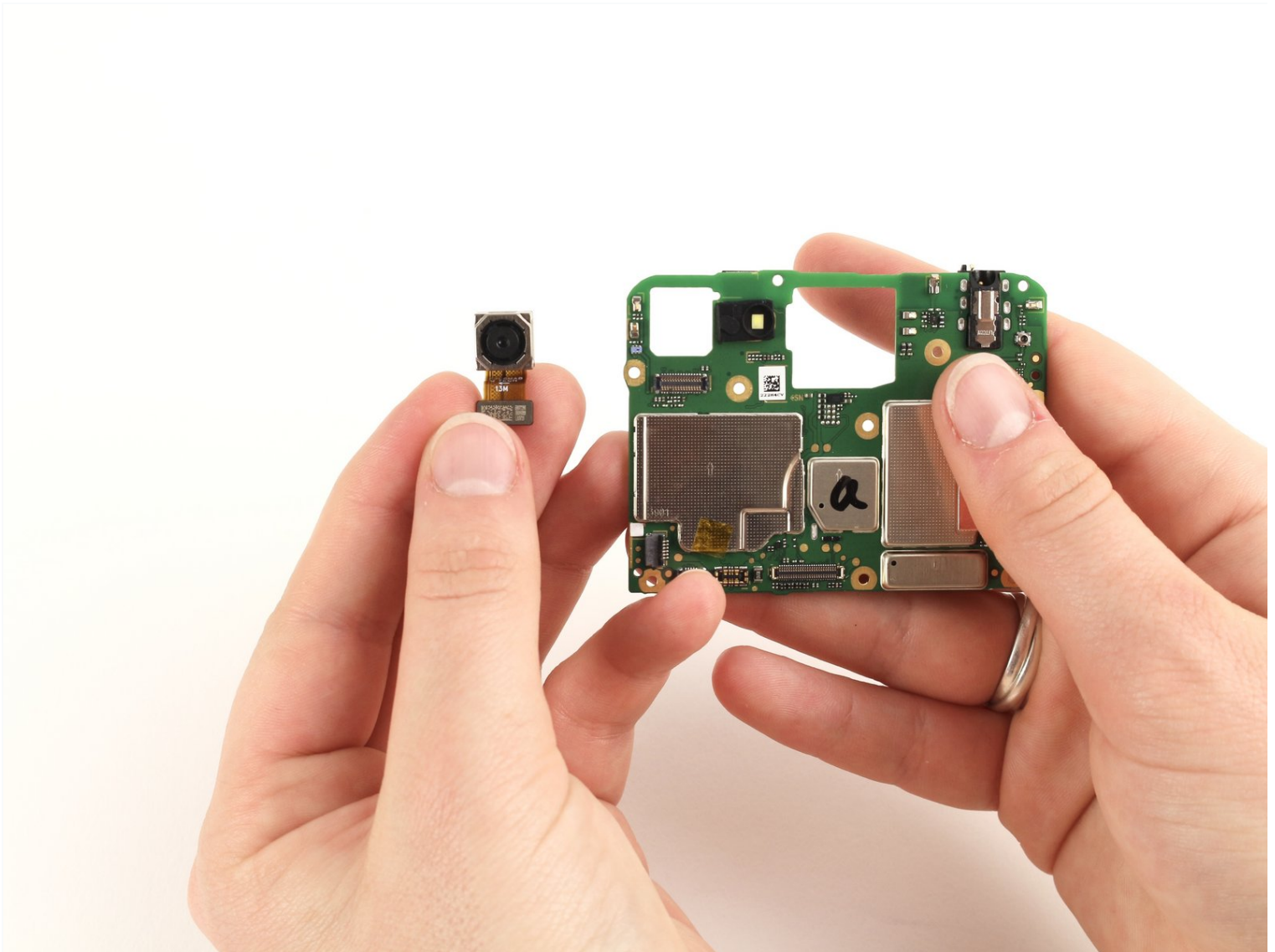




Motorola Moto E6 Play Back Facing Camera Replacement

The back camera of the Motorola Moto E6 Play...

Written By: Charlie Priebe



INTRODUCTION

The back camera of the Motorola Moto E6 Play phone is a 13MP, $f/2.2$, $1.12\text{ }\mu\text{m}$ pixel camera with a LED flash and a PDAF (phase detection autofocus) feature. It also has MPEG-4/H.263/H.264 video capture.

Before you begin, download the [Rescue and Smart Assistant](#) app to backup your device and diagnose whether your problem is software or hardware related.

If you are experiencing the 'Camera Busy' error, click [here](#) for troubleshooting solutions. However, if you are experiencing other issues with the back camera, or the troubleshooting guides do not solve the problem, you may need to replace the camera.



TOOLS:

[Phillips #0 Screwdriver](#) (1)

[Halberd Spudger](#) (1)

[Tweezers](#) (1)

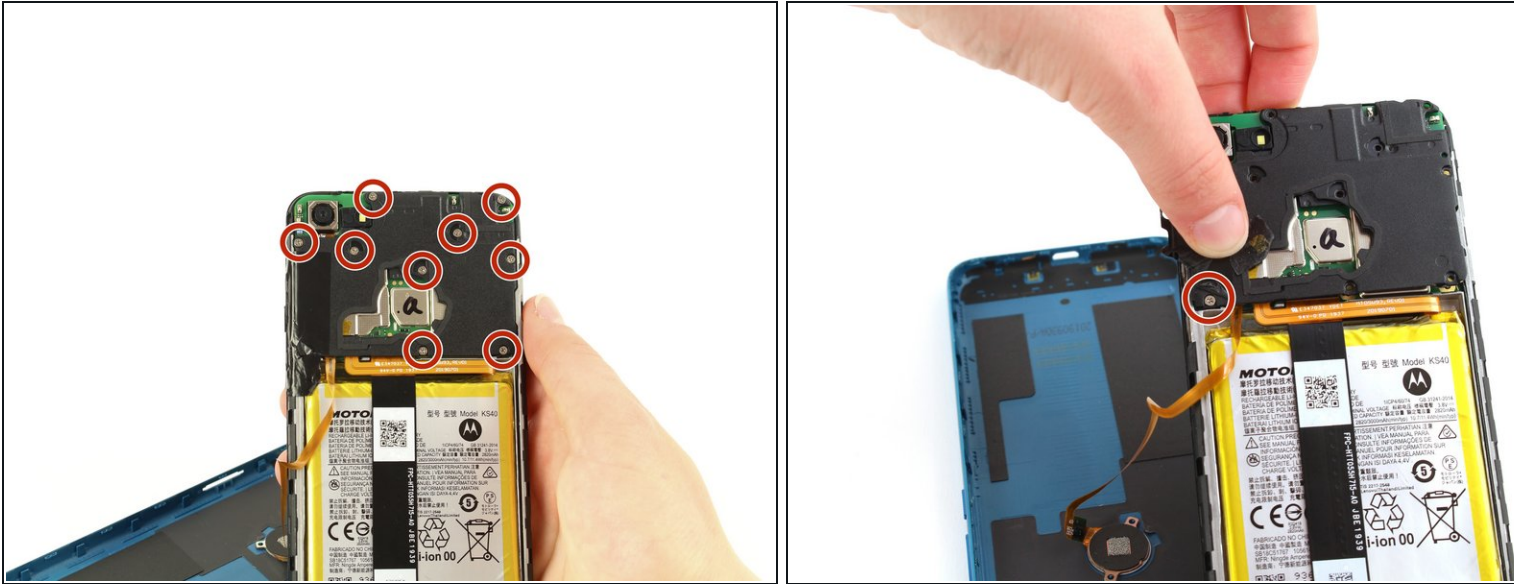
Step 1 — Back Cover



- Run the halberd spudger along the edges of the device. The back cover should easily pop off.

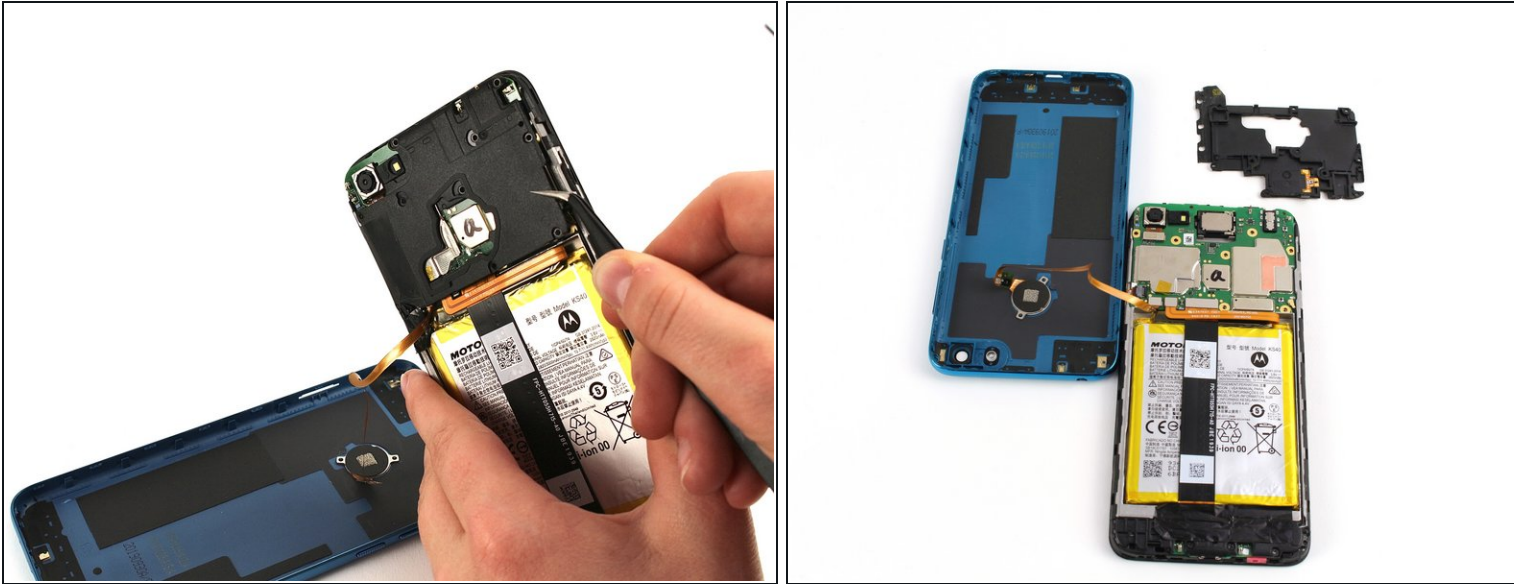
⚠ Gently remove the back cover. Do not pull hard, as it is still connected to the fingerprint scanner inside the phone.

Step 2 — Circuit Board Covers



- To remove the cover on the motherboard, remove the 10 silver 3.90 mm Phillips screws attaching the cover to the board using the Phillips #0 screwdriver.
- ① One of these ten screws is covered by black tape located at the bottom left corner of the black cover. Peel back the black tape to access this screw.

Step 3



- With the angled tweezers, remove the black cover to reveal the motherboard underneath.

⚠ Remove the black piece cover with caution to avoid puncturing the motherboard with the tweezers.

Step 4



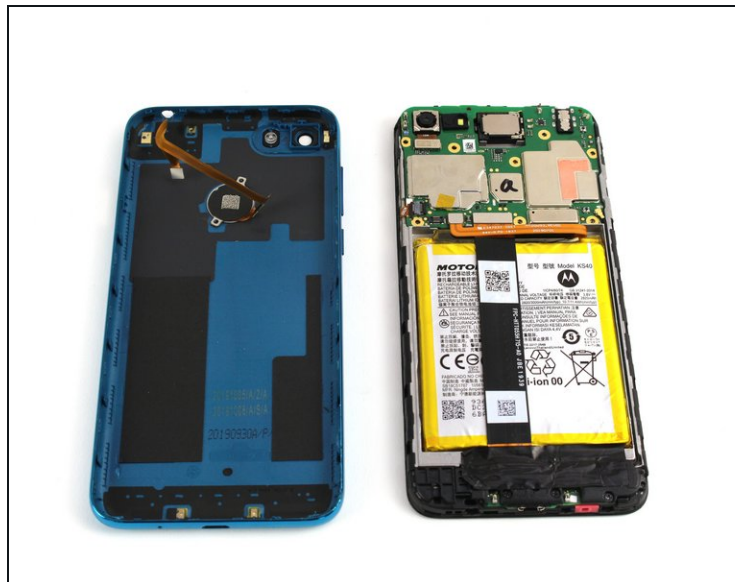
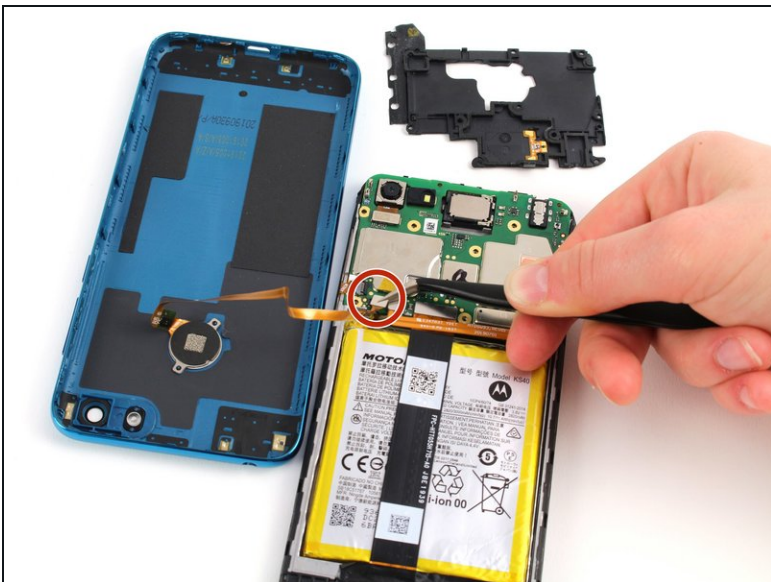
- The bottom plastic piece covering the daughterboard can be seen by peeling back the tape covering the bottom section of the phone below the battery.
- To remove the cover, unscrew the six black 3.45 mm Phillips screws holding the cover in place using the Phillips #0 screwdriver.

Step 5



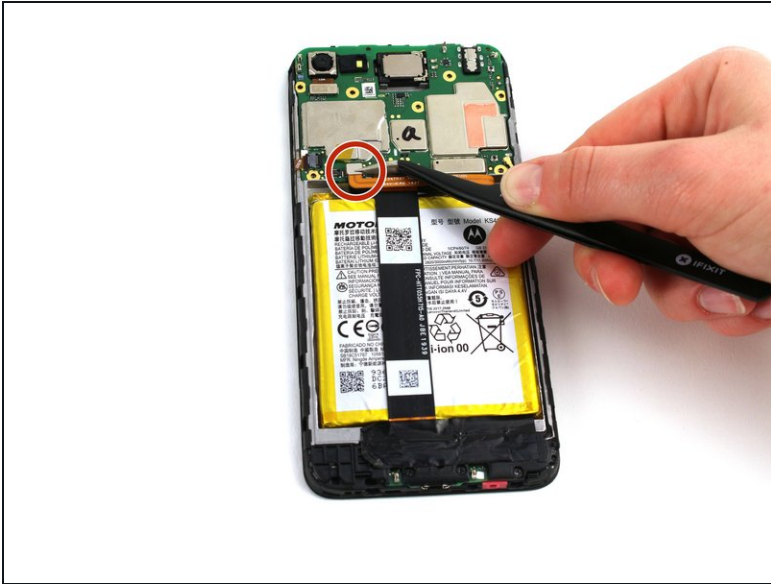
- Remove the black cover piece using the angled tweezers.

Step 6 — Back Facing Camera



- Use the angled tweezers to pry off the metal head of the connecting piece from the main motherboard assembly.

Step 7



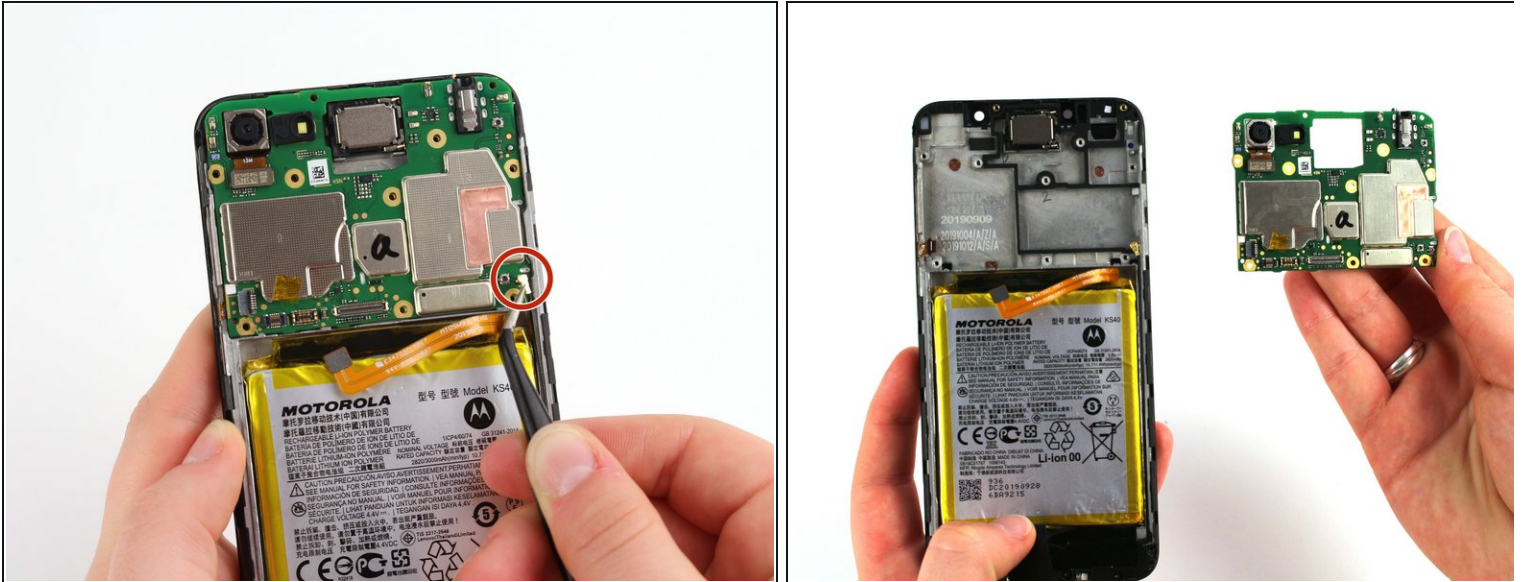
- Using the angled tweezers, detach the two connectors from the motherboard by pulling the metallic head up and away from the phone.

Step 8



- Use the angled tweezers to flip the black plastic piece from flat to upright.
- i** This will allow you to separate the mini connector from the motherboard later.

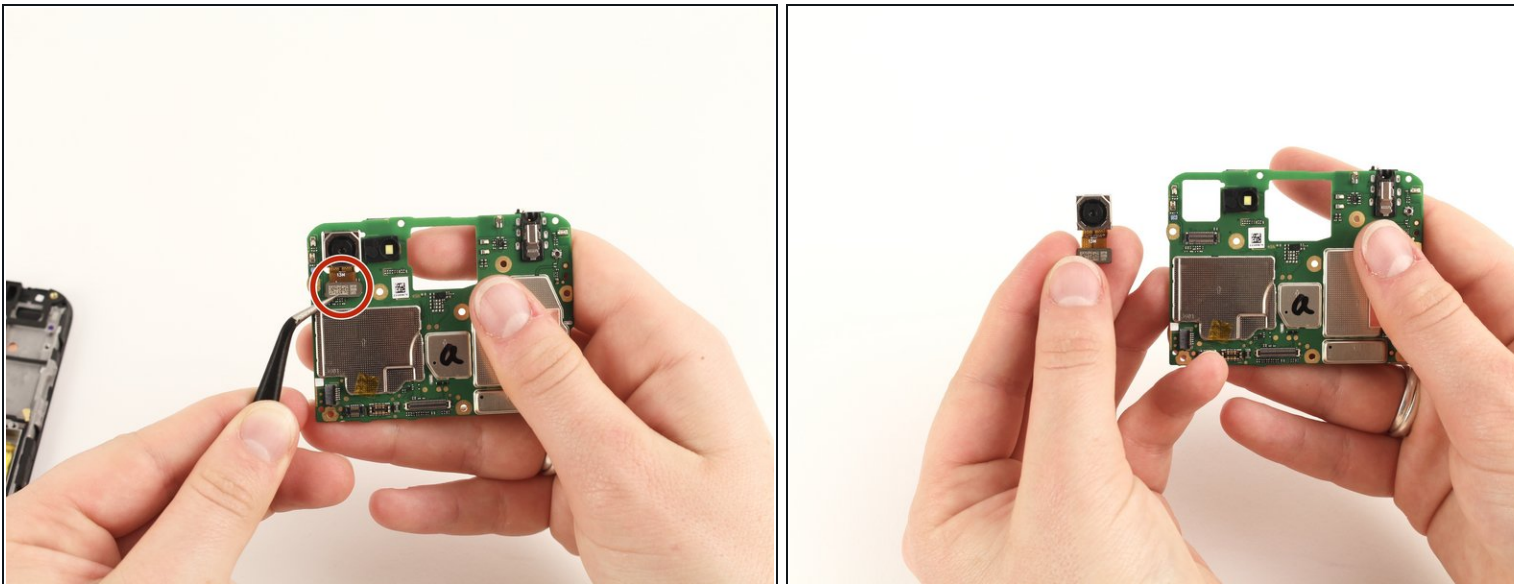
Step 9



- Disconnect the rod connected to the motherboard using the angled tweezers.

⚠ Gently pull the small metal head of the vertically perpendicular from the motherboard with caution to avoid puncturing the board with the tweezers.

Step 10



- Using the angled tweezers, gently lift and pull the tab at the bottom of the camera to remove the back facing camera from the circuit board.

To reassemble your device, follow these instructions in reverse order.