



# Motorola Moto E6 Play Display Assembly Replacement

The Motorola Moto E6 Play phone has a 5.5" HD+...

Written By: Charlie Priebe



## INTRODUCTION

The Motorola Moto E6 Play phone has a 5.5" HD+ screen, with a Max Vision display (18:9 aspect ratio), 295 ppi, and IPS LCD feature. The screen is probably the most easily breakable part on the phone, but unfortunately it takes some effort to replace it. Before beginning this guide, be sure to power off the phone completely. This guide will also involve removing most of the other components of the phone, so warnings about [swollen batteries](#) should be considered for safety.

Before you begin, download the [Rescue and Smart Assistant](#) app to backup your device and diagnose whether your problem is software or hardware related.

---

### TOOLS:

[Phillips #0 Screwdriver](#) (1)

[Halberd Spudger](#) (1)

[Metal Spudger](#) (1)

---

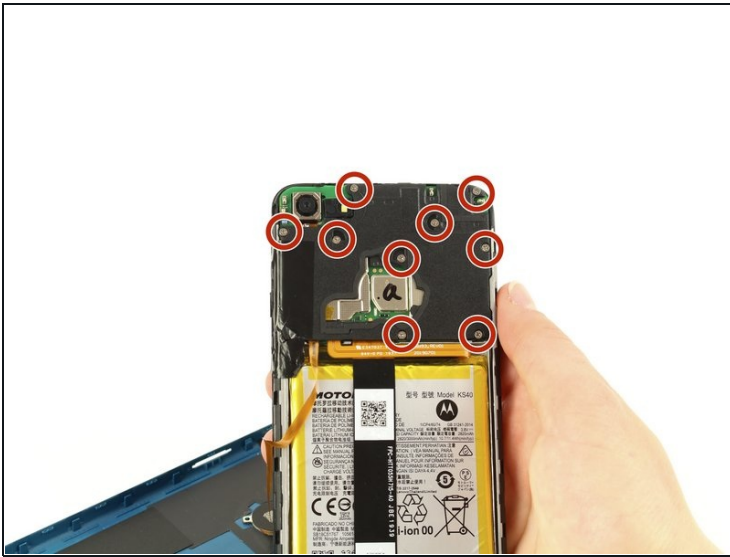
### Step 1 — Back Cover



- Run the halberd spudger along the edges of the device. The back cover should easily pop off.

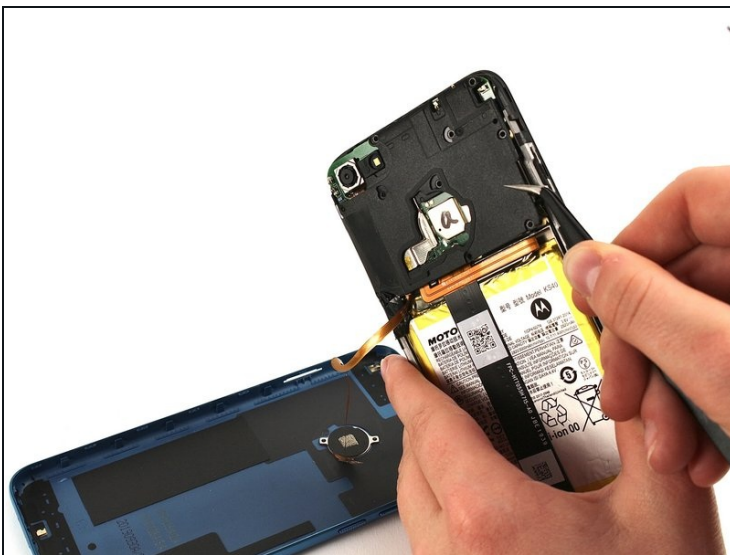
 Gently remove the back cover. Do not pull hard, as it is still connected to the fingerprint scanner inside the phone.

## Step 2 — Circuit Board Covers



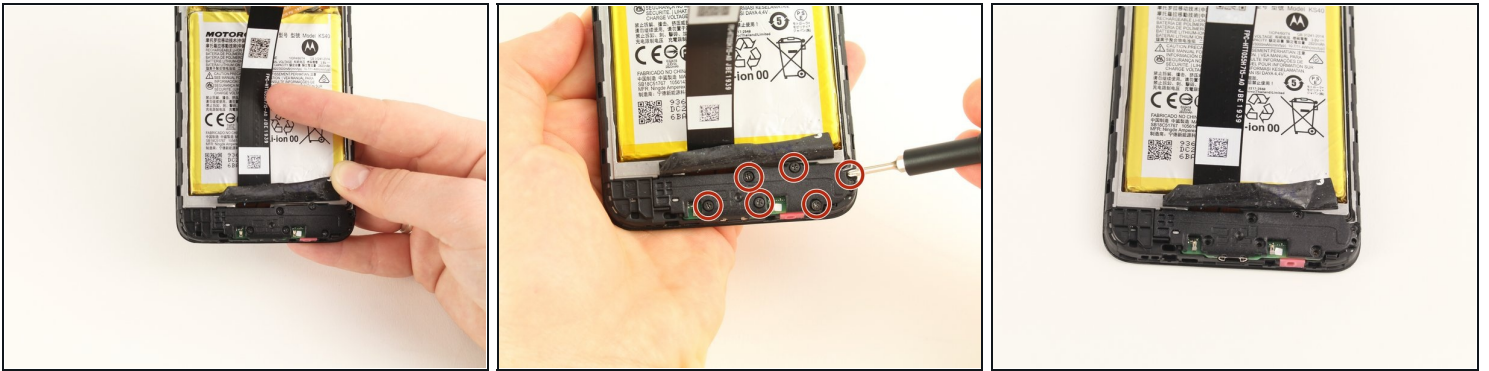
- To remove the cover on the motherboard, remove the 10 silver 3.90 mm Phillips screws attaching the cover to the board using the Phillips #0 screwdriver.
- ① One of these ten screws is covered by black tape located at the bottom left corner of the black cover. Peel back the black tape to access this screw.

## Step 3



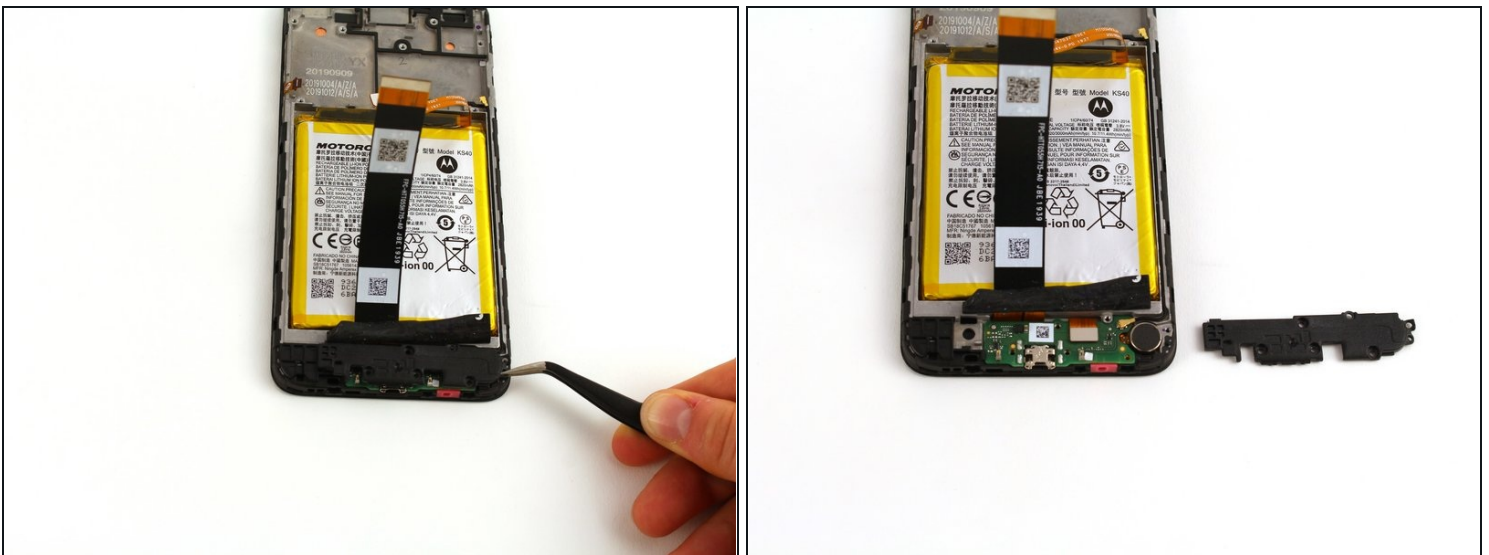
- With the angled tweezers, remove the black cover to reveal the motherboard underneath.
- ⚠ Remove the black piece cover with caution to avoid puncturing the motherboard with the tweezers.

## Step 4



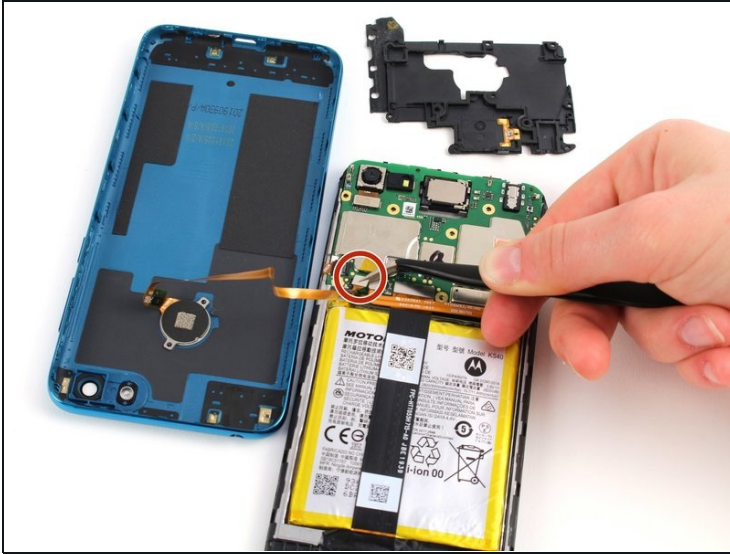
- The bottom plastic piece covering the daughterboard can be seen by peeling back the tape covering the bottom section of the phone below the battery.
- To remove the cover, unscrew the six black 3.45 mm Phillips screws holding the cover in place using the Phillips #0 screwdriver.

## Step 5



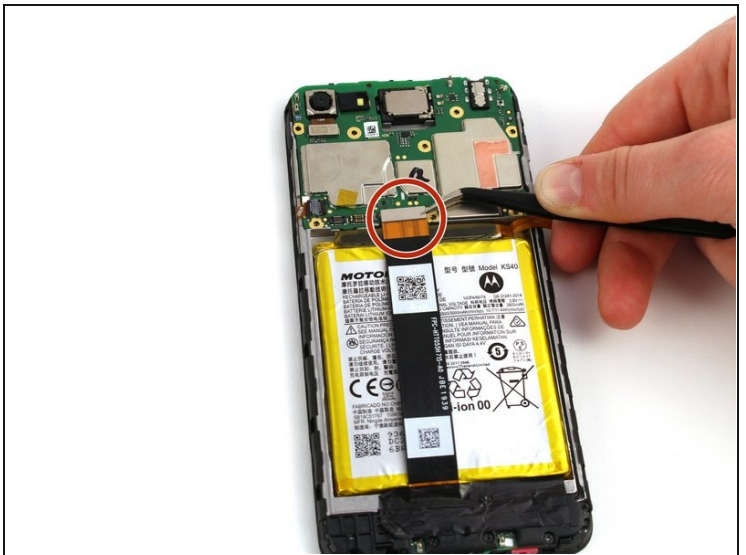
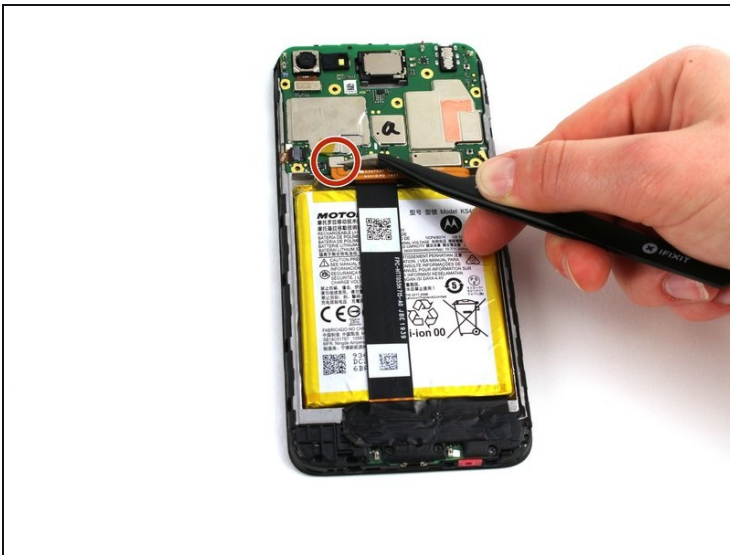
- Remove the black cover piece using the angled tweezers.

## Step 6 — Display Assembly



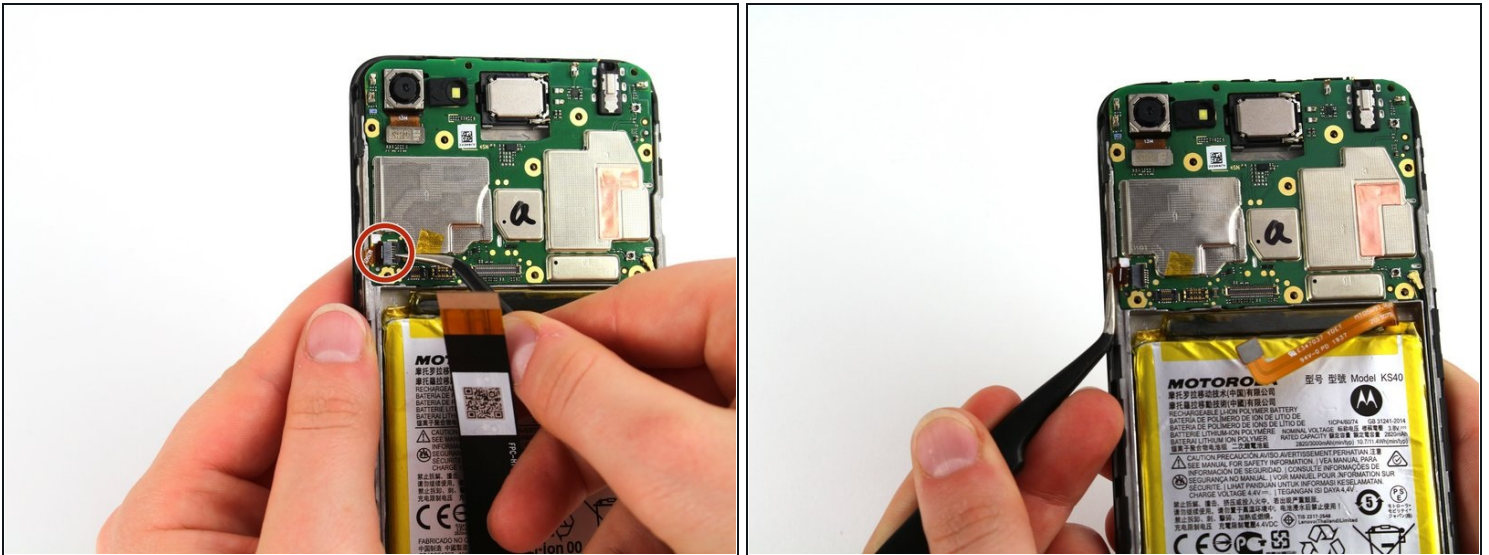
- Use the angled tweezers to pry off the metal head of the connecting piece from the motherboard assembly.

## Step 7



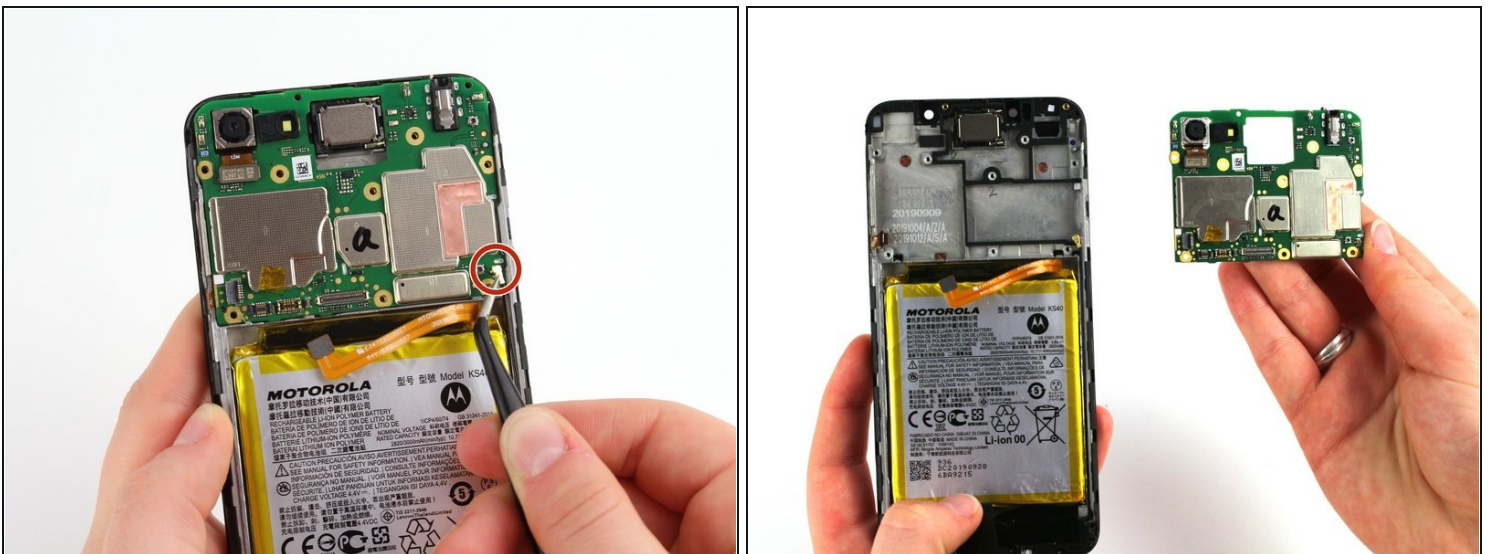
- Using the angled tweezers, detach the two connectors from the motherboard by pulling the metallic head vertically perpendicular from the phone.

## Step 8



- Use the angled tweezers to flip the black plastic piece from flat to upright.
- ① This will allow you to separate the mini connector from the motherboard later.

## Step 9



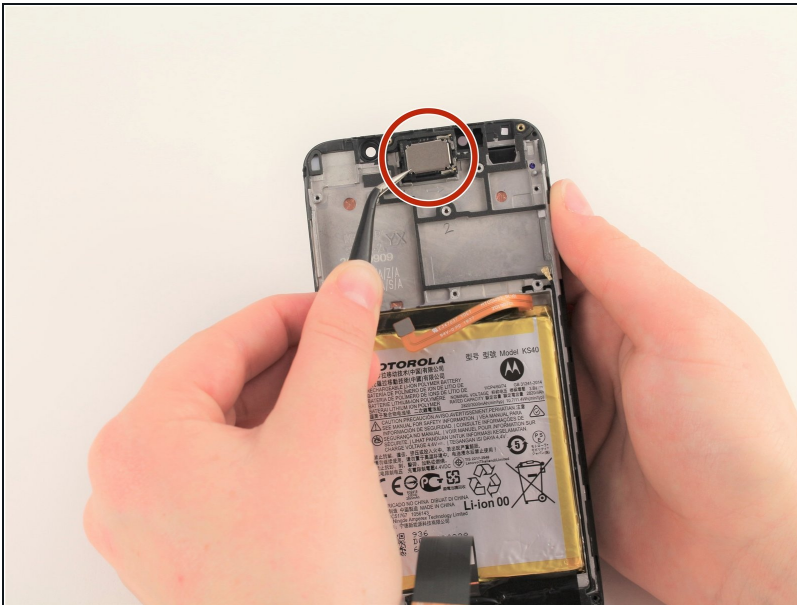
- Disconnect the rod connected to the motherboard using the angled tweezers.
- ⚠ Gently pull the small metal head of the vertically perpendicular from the motherboard, with caution to avoid puncturing the board with the tweezers.

## Step 10



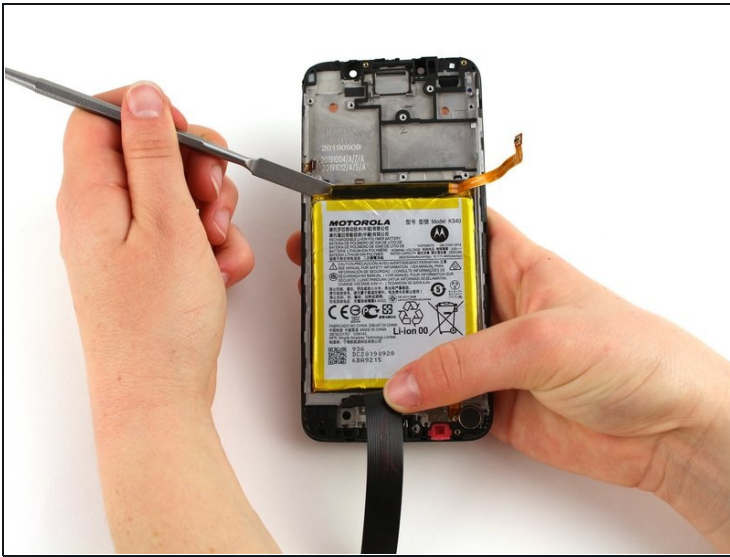
- Using the angled tweezers, disconnect the clip connecting the daughterboard to the battery by pulling the metal head vertically perpendicular to the phone.
- Then, remove the circuit board.

## Step 11



- Using the angled tweezers, remove the calling speaker from the top of the frame.
- ① The empty frame remaining after removing all components is the screen assembly, and must be replaced as a whole.

## Step 12



- Remove the battery by inserting the spudger under the battery and gently pulling it up from the device to loosen the adhesive glue underneath.
- Continue to push the spudger towards the center of the compartment holding the battery, and gently pry the battery away from the device.

⚠ In this image, the metal spudger is used. However, you should NOT use a metal spudger to remove the battery. Use the plastic spudger instead, as this is less likely to puncture the battery.

To reassemble your device, follow these instructions in reverse order.