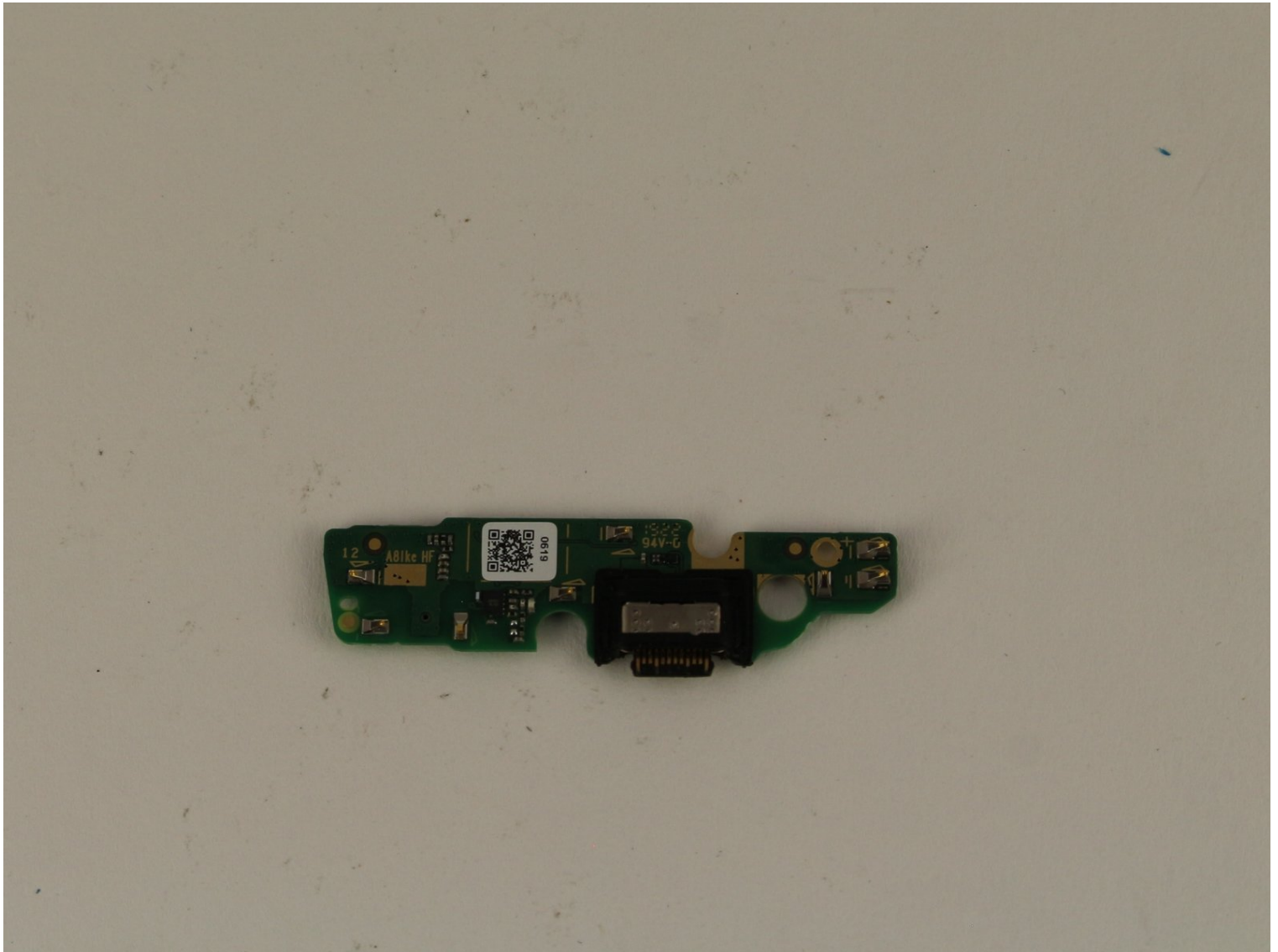




# Motorola Moto G7 Play Charging Port Replacement

When the Motorola G7 Play, models XT1952-3 and...

Written By: Monserath Casillas



# INTRODUCTION

When the Motorola G7 Play, models XT1952-3 and XT1952-2, no longer charges, it could be due to a failing charging port. This replacement guide provides efficient steps to get the device working again. If replacing the charging port doesn't fix the issue, attempt to replace the battery with this [guide](#).

Before you begin, download the [Rescue and Smart Assistant](#) app to backup your device and diagnose whether your problem is software or hardware related.

## TOOLS:

[iFixit Opening Picks \(Set of 6\)](#) (1)


[iFixit Opening Tool](#) (1)

[Phillips #00 Screwdriver](#) (1)

## Step 1 — Back Cover



 Turn off your device before you begin.

- Use the iFixit pick to break the adhesive around the back case.
-  Use a heat gun, hairdryer, or iOpener to weaken the adhesive around the back case. If you're using the iOpener, please review the [instructions](#) for proper use.

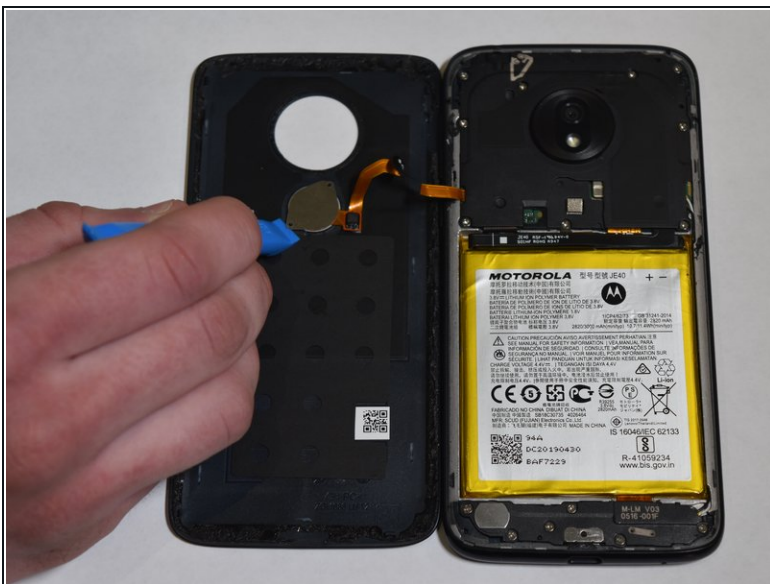
## Step 2



- Detach the back case from the phone.

⚠ Make sure the back is opened right to left so the cable of the fingerprint scanner does not get damaged.

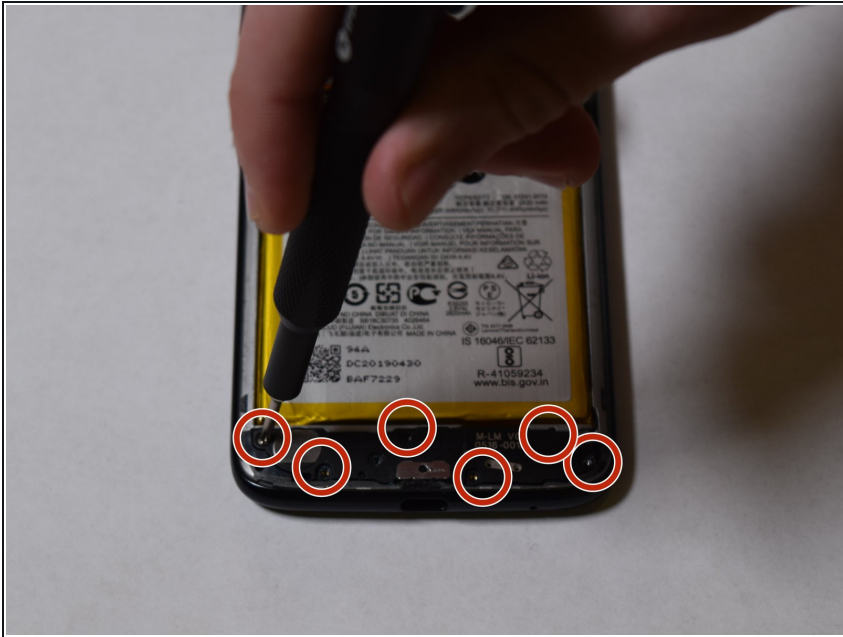
## Step 3



- Use the iFixit pick and the iFixit opening tool to pull the fingerprint scanner off of the back case.

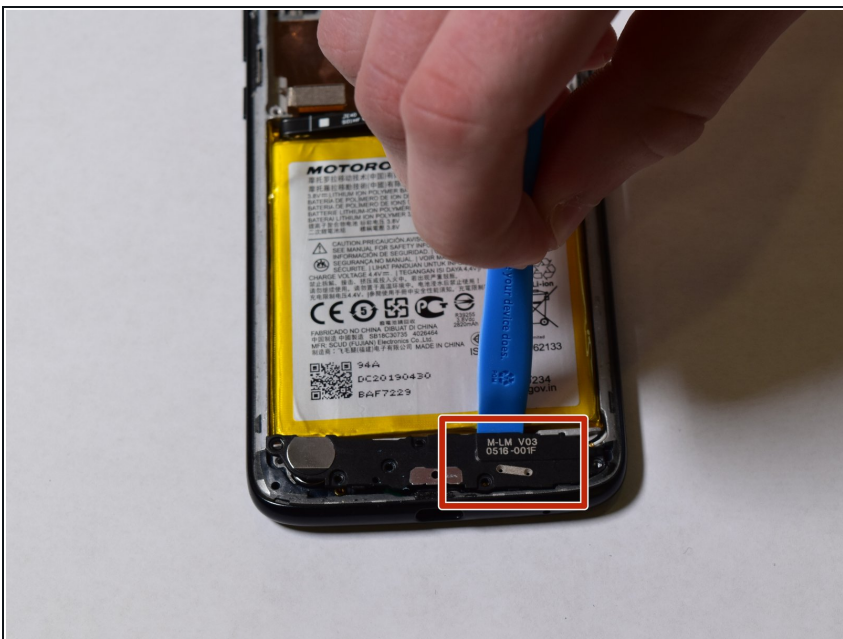


## Step 4 — Charging Port



- Remove the six 3.2 mm screws from the charging port assembly cover with a Phillips #00 screwdriver.

## Step 5



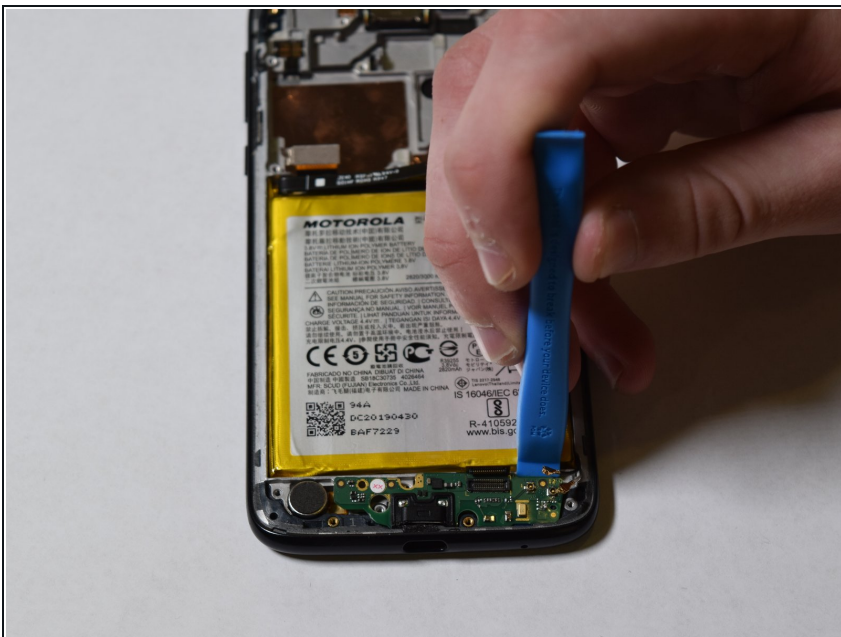
- Using the iFixit opening tool, carefully pry up the charging port assembly cover.

## Step 6



- Using an iFixit opening tool, detach the cables from the charging port assembly.

## Step 7



- Using the iFixit opening tool, carefully pry up the charging port assembly.

To reassemble your device, follow these instructions in reverse order.