



# Acer Aspire One D225-1625 Wireless Card Replacement

The Acer Aspire One D255-1625 model weighs approximately 2.4 pounds with a 10.1" display, making it a perfect grab and go netbook.

Written By: Alexander Ilibasic



## INTRODUCTION

If the Acer Aspire One D255-1625 will not connect to the internet, use this guide to replace your wireless card.

The wireless card allows a computer to connect to the internet by using frequencies transmitted by a router or a cellular tower. A damaged or defective wireless card will not allow your device to connect to the internet.

Before replacing the wireless card make sure to see our guide “ [Acer Aspire One D255-1625 Wireless Card Troubleshooting](#)”.



### TOOLS:

- [Jimmy](#) (1)
- [Phillips #1 Screwdriver](#) (1)
- [ESD Safe Tweezers Blunt Nose](#) (1)




### PARTS:

- [Intel Dual Band Wireless-AC 7260HMW](#) (1)

## Step 1 — Battery




 Before you replace the battery, ensure that the device is unplugged and powered off.

- Pull the upper left switch on the back of the laptop to the left into the unlock position.
- Pull the upper right switch to the left and hold it in place.

## Step 2



- Pull the battery straight out.
-  To properly dispose of battery, locate your nearest recycling plant to dispose of it there.

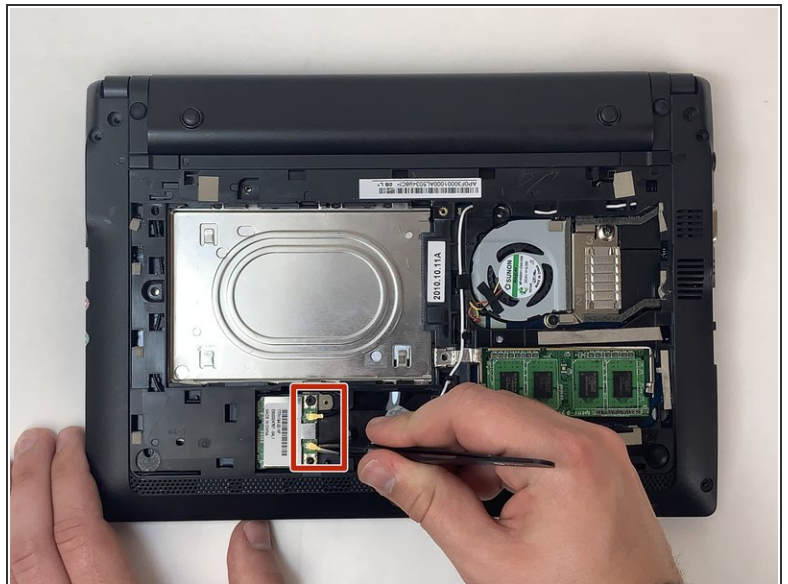
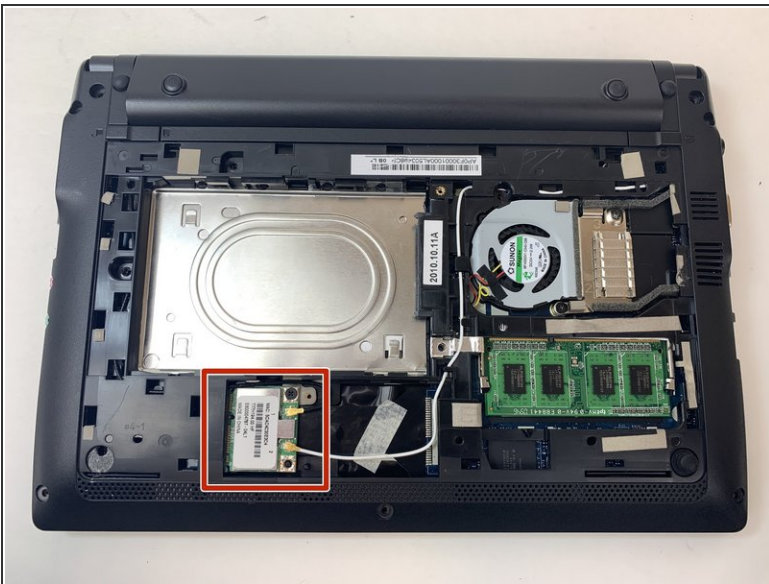


### Step 3 — Wireless Card



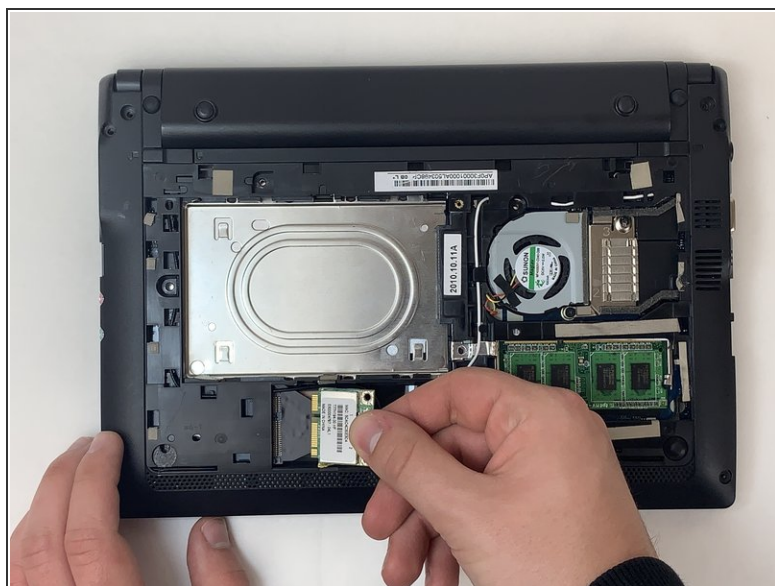
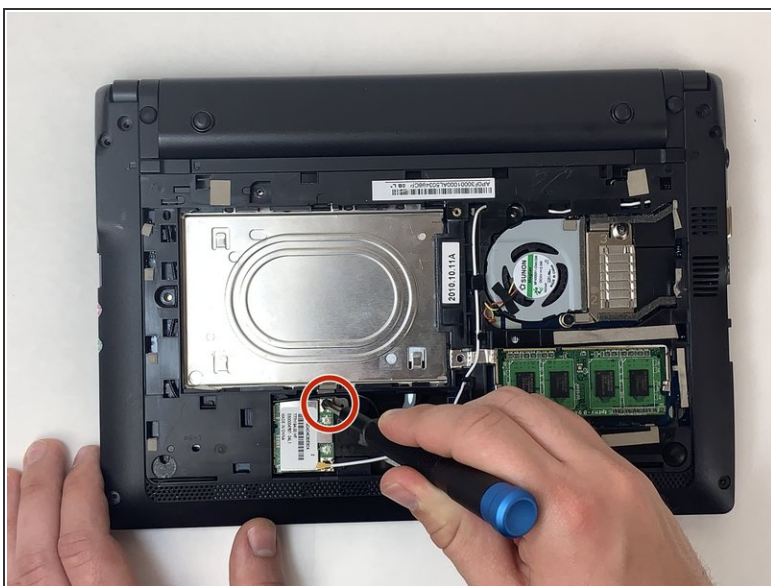
- Use iFixit's Jimmy tool to remove the bottom panel of the device.
- Wedge the tool into the top middle of the panel and slide back and forth across the edge until the back gently pops off.

### Step 4



- Use tweezers to disconnect the black and white wires from the wireless card by pulling them up off the card.

## Step 5



- Use a Phillips #1 screwdriver to unscrew the top right screw on the wireless card.
- Pull out wireless card by sliding it out to your right.

To reassemble your device, follow these instructions in reverse order.