



MSI GP62MVR 6RF Leopard Pro Battery Replacement

Use this guide to replace the battery in the MSI GP62MVR 6RF Leopard Pro laptop.

Written By: Jordan Buck



INTRODUCTION

This guide demonstrates how to replace the battery in the MSI GP62MVR 6RF Leopard Pro laptop. It is a simple process with no special skills required. Avoid touching the circuitry when the case is open to avoid short-circuiting components or shocking yourself. If the battery in your laptop doesn't turn on, cannot charge, or loses charge rapidly, then it will need to be replaced. Follow this guide to change the battery in a MSI GP62MVR 6RF Leopard Pro.



TOOLS:

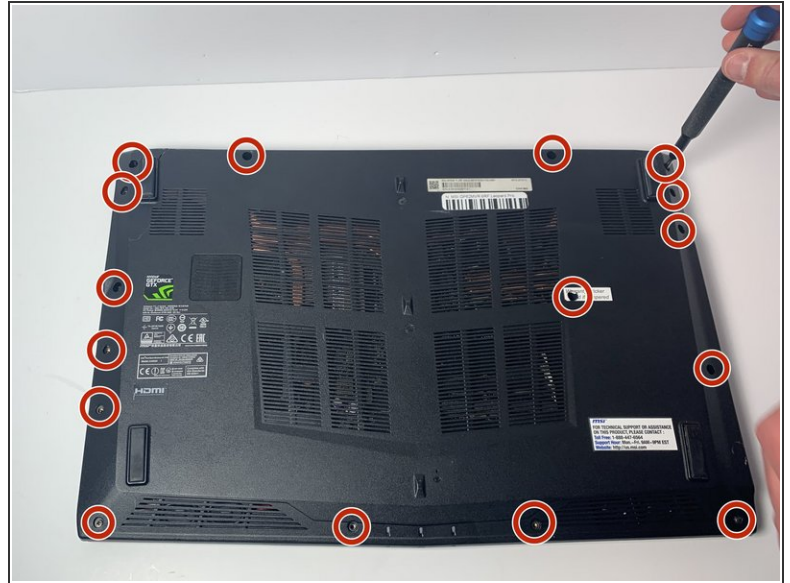
- [Jimmy](#) (1)
- [Phillips #0 Screwdriver](#) (1)



PARTS:

- [MSI BTY-M6H 10.86V 4730mAh Battery](#) (1)

Step 1 — Bottom Cover



- Place the laptop upside down.
- Remove the sixteen 5.5 mm screws with a Phillips #0 screwdriver.

Step 2




- Use the Jimmy tool to evenly pry loose the bottom cover.
- Ensure that all sides are detached from the plastic hinging before attempting to remove the bottom cover.

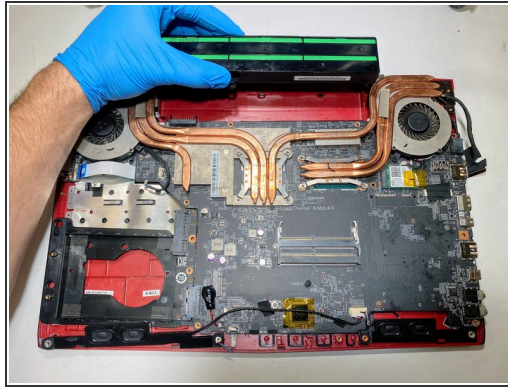
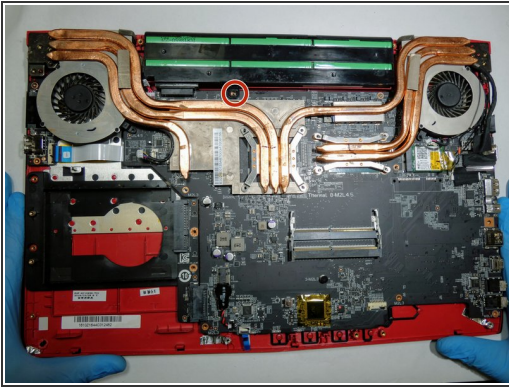
Step 3



- Remove the back cover.

 Touching circuitry could damage components or result in personal shock; it is recommended that you now wear latex gloves to prevent both issues.

Step 4 — Battery



- Using a Phillips #0 Screwdriver, remove the single 5.5 mm screw fastening the battery to the body of the computer.
- Remove the battery from the device.

To reassemble your device, follow these instructions in reverse order.