



# HP Envy x360 m6-w105dx Wi-Fi Card Replacement

This guide will let a user replace their Wi-Fi card on the motherboard.

Written By: Dalton Hancock



## INTRODUCTION

This is a replacement guide for the Wi-Fi card that is located on the motherboard. This is the component responsible for translating wireless signals into data readable by the processing units. This also component is also know as the network adaptor. With out this proper card it will be impossible for your device to find the proper network to connect to and process data.

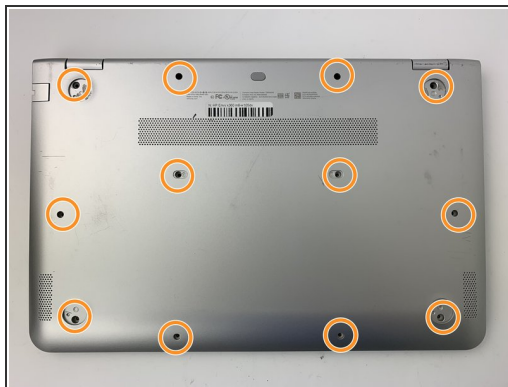
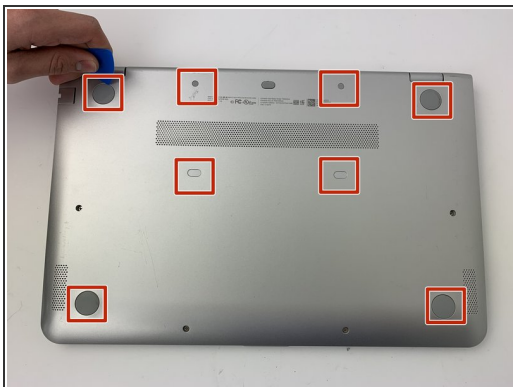
If you are having issues with establishing or maintaining wireless connections (WiFi, bluetooth) on your devices and have ruled out any software related causes, replacing the wireless card may alleviate these problems.



### TOOLS:

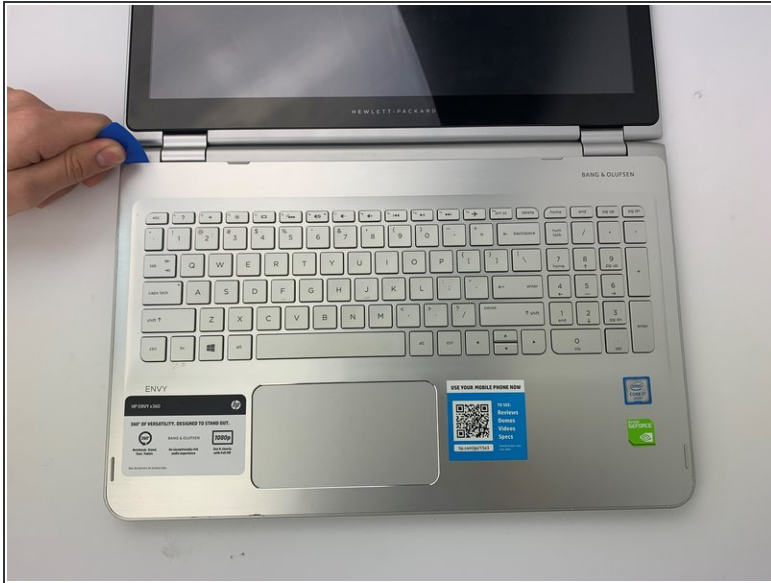
- [Phillips #1 Screwdriver](#) (1)
  - [iFixit Opening Picks set of 6](#) (1)
  - [Tweezers](#) (1)
-

## Step 1 — Keyboard




- ✦ Make sure the laptop is powered off and disconnected from any outlets.
- Use the opening pick to lift up the eight rubber grips on the underside of the device.
- With the #1 Phillips screwdriver, remove the twelve 6mm screws from the back case.

## Step 2

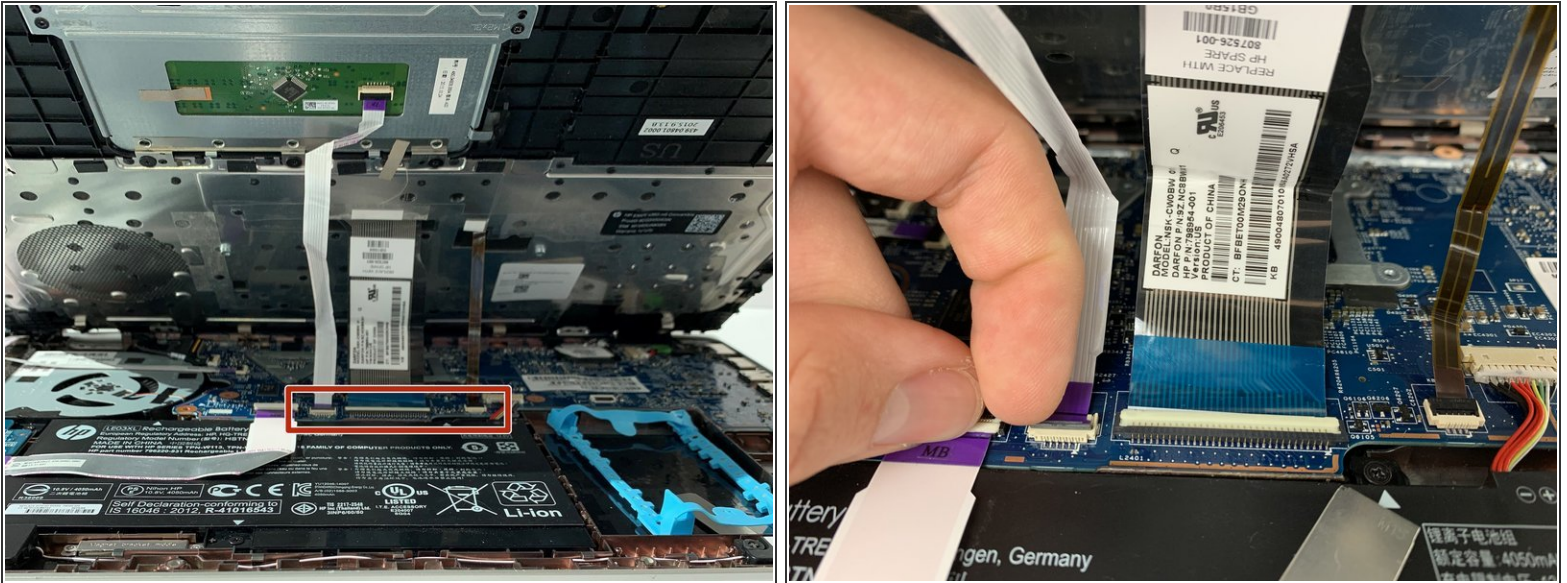


- Open the laptop and turn to the keyboard.
- Gently insert an opening pick into the edge of the keyboard panel, and slide around the keyboard lining until the clips have all been disengaged.
- Lift the keyboard panel from the bottom and carefully start to lift up.

 There are ribbon cables still connected on the under side of the the keyboard. Do not pull the keyboard away from the device.



## Step 3



- Gently lift the keyboard up from the bottom.
- Carefully open the locking flap of the three ZIF connectors and detach the three ribbon cables from the motherboard using your fingers.
- ⚠ Do not remove the ZIF connectors by pulling on the wires, instead detach them by gently flipping up the plastic tabs located at the ends of the wiring.
- Fully remove the keyboard from the laptop and install your new keyboard.

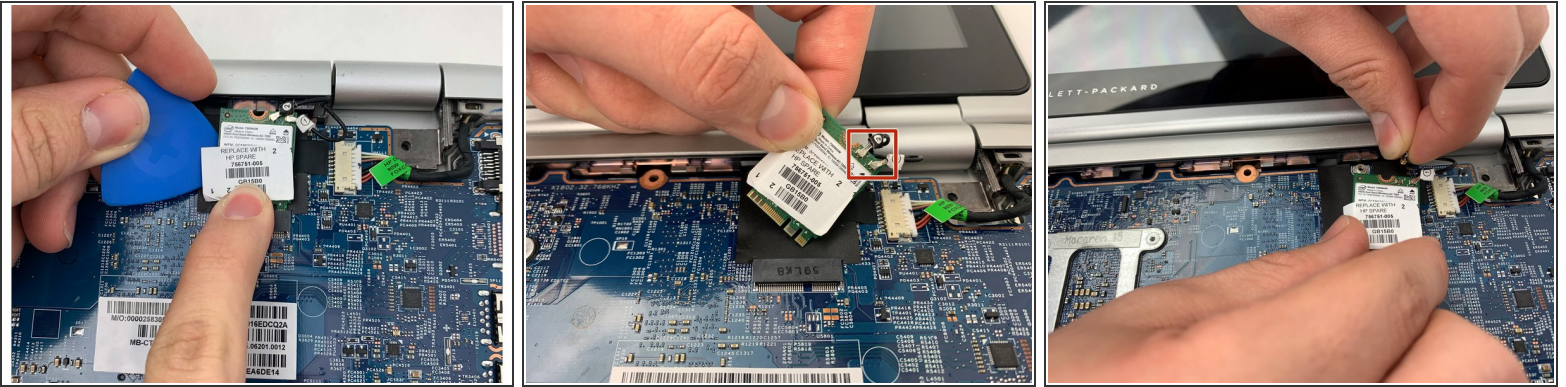
## Step 4 — Wi-Fi Card



- Take the #1 Phillips screwdriver and unscrew the 0.4mm silver screw holding down the wireless card.

This document was generated on 2021-03-22 09:51:17 AM (MST).

## Step 5



- Push the chip up with the pick and forward to remove it from the port it is sitting in.
- Take the precision tweezers and pull the two snap wires off of the chip.
- ⓘ The wires have snap connectors for easy replacement and removal.
- Remove the Wi-Fi Card from the device.

To reassemble your device, follow these instructions in reverse order.