

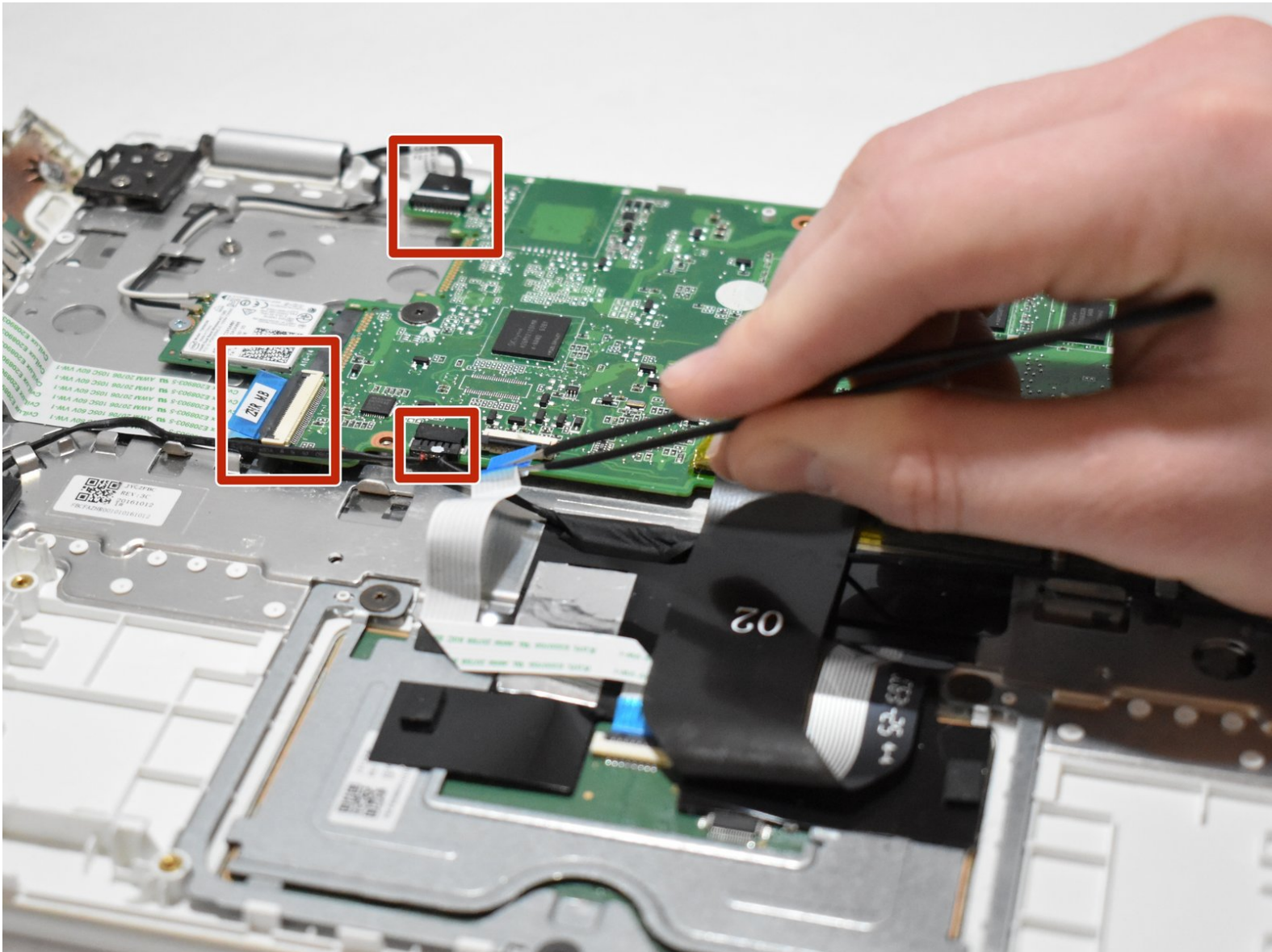


Acer Chromebook CB5-132T-C8ZW

Motherboard Replacement

This is a repair guide for the Acer Chromebook CB5-132T-C8ZW motherboard.

Written By: Lauren Reichenbach



INTRODUCTION

If your Acer Chromebook CB5-132T-C8ZW [will not turn on or has a burning odor](#), your motherboard may be faulty and needs to be replaced.

The motherboard is one of the main components of your Chromebook. It allows all the computer hardware to communicate with one another. A non-functioning motherboard will make your Chromebook run poorly. You may smell a burning odor, see visibly broken parts, the screen may be frozen, or you may get the “blue screen of death.”

Before beginning, make sure the Chromebook is disconnected from any external power source; then press and hold the power button for at least five seconds prior to dismantling in order to release any stored energy that could potentially be harmful.



TOOLS:

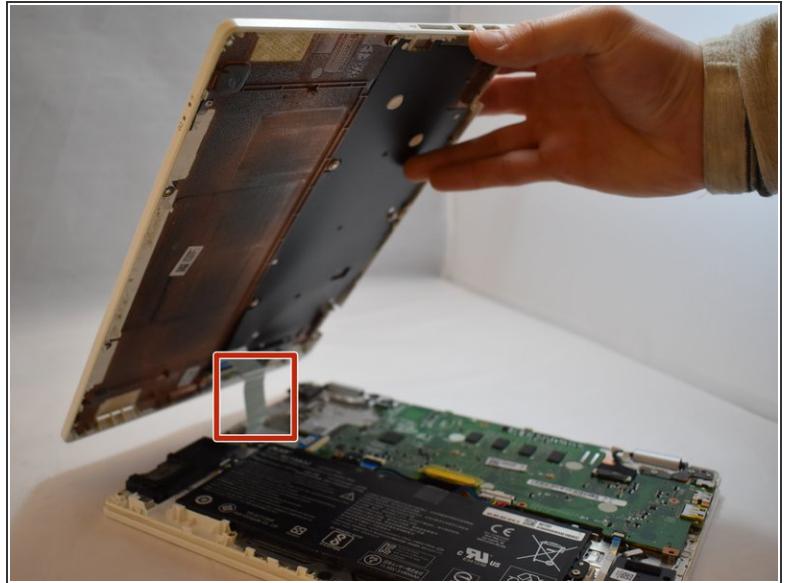
- [iFixit Opening Tools](#) (1)
 - [JIS #1](#) (1)
-

Step 1 — Battery



- Remove eleven 7.2 mm screws from the bottom of the Chromebook using a JIS #1 screwdriver.

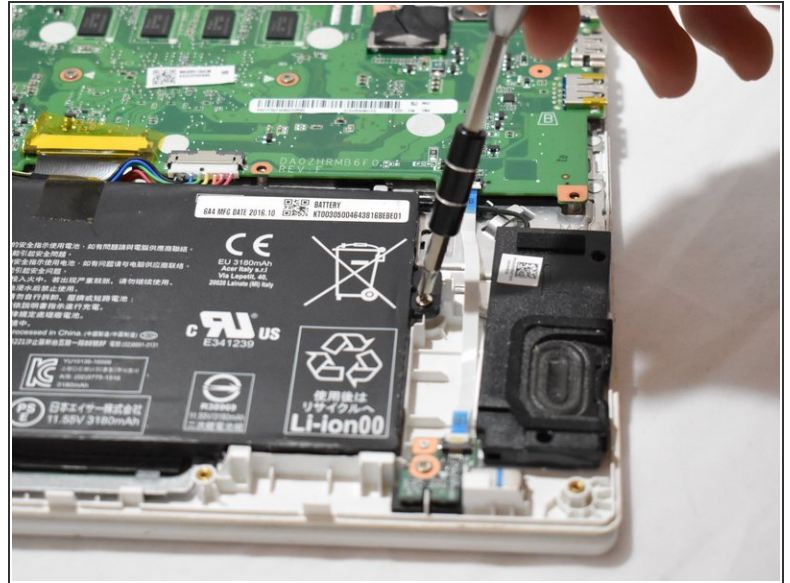
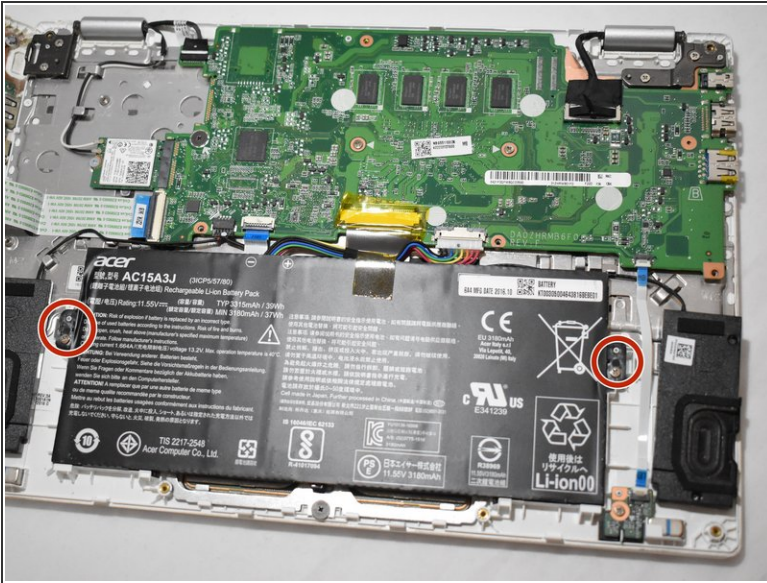
Step 2



- Insert and slightly twist a plastic opening tool to separate and remove the backing of the Chromebook from the body.

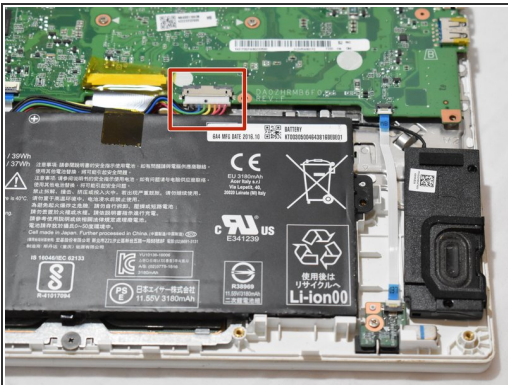
⚠ Do not immediately remove the back from the laptop. The power strip keeps the backing attached to the rest of the laptop. Gently lift backing from the power button side and set next to the body of the laptop.

Step 3



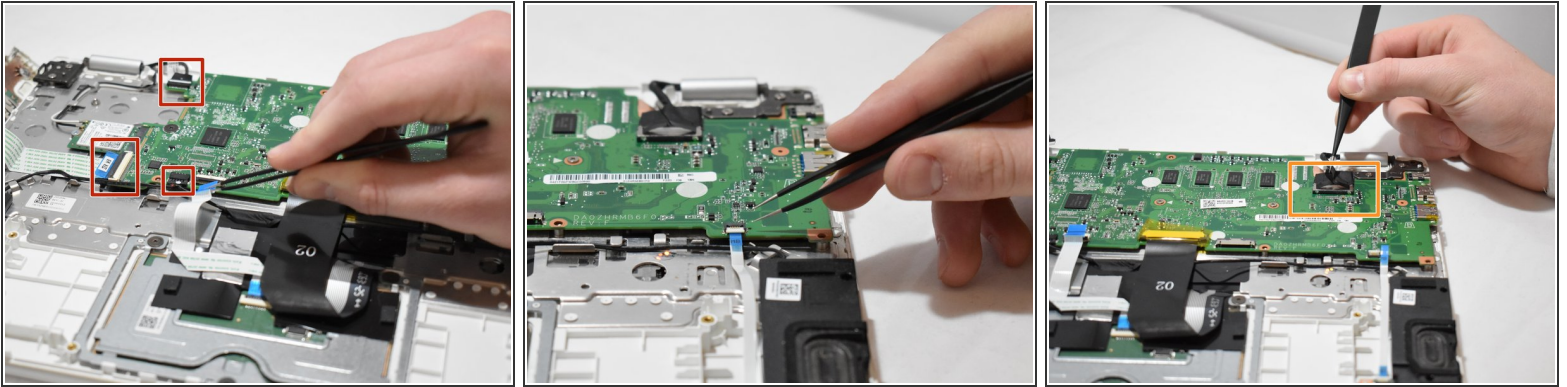
- Remove two 4.6 mm JIS # screws at each end of the battery.

Step 4



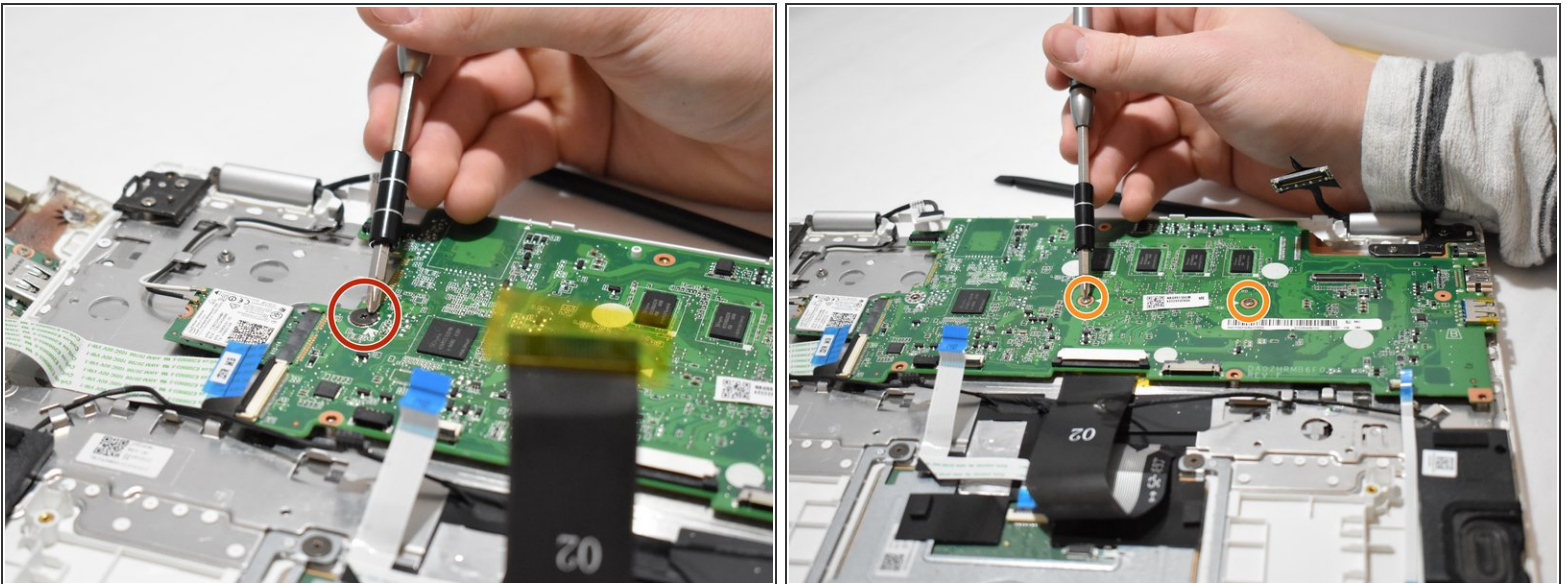
- Carefully pull out the ribbon cable attached to the motherboard that runs wires to the battery.
- Remove the battery.

Step 5 — Motherboard



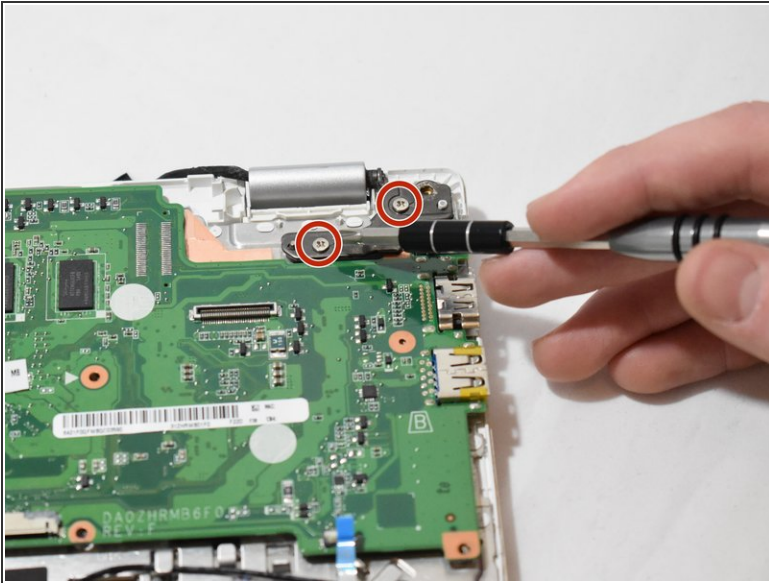
- Remove the six tabs connected to the motherboard.
- Flip up the white tabs on the connectors, and pull out blue connective strips.
- Pull up on the black connector on top right corner of the motherboard.

Step 6



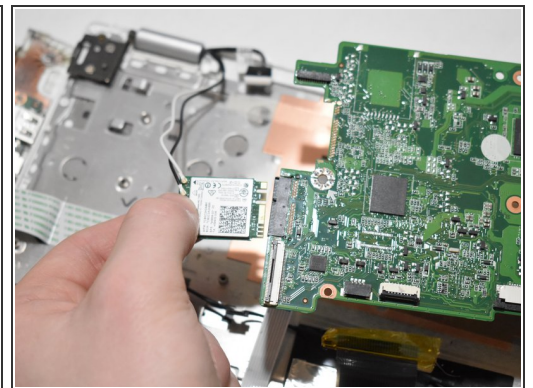
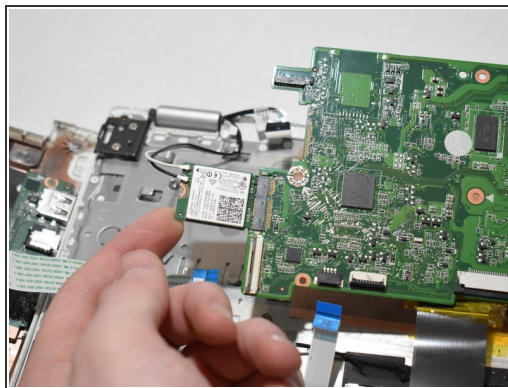
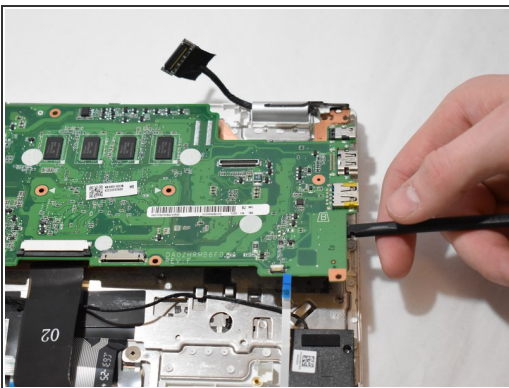
- Remove one 2.8mm JIS #1 screw from one end of the motherboard.
- Remove two 2.2mm JIS #1 screws from the middle of the motherboard.

Step 7



- Remove two 4.7mm JIS #1 screws from the black tab on the top right corner of the motherboard.
- Flip the black tab up.

Step 8



- Lift the motherboard up from the laptop using a spudger tool.
- Disconnect the chip attached to the right side of the motherboard.

To reassemble your device, follow these instructions in reverse order.