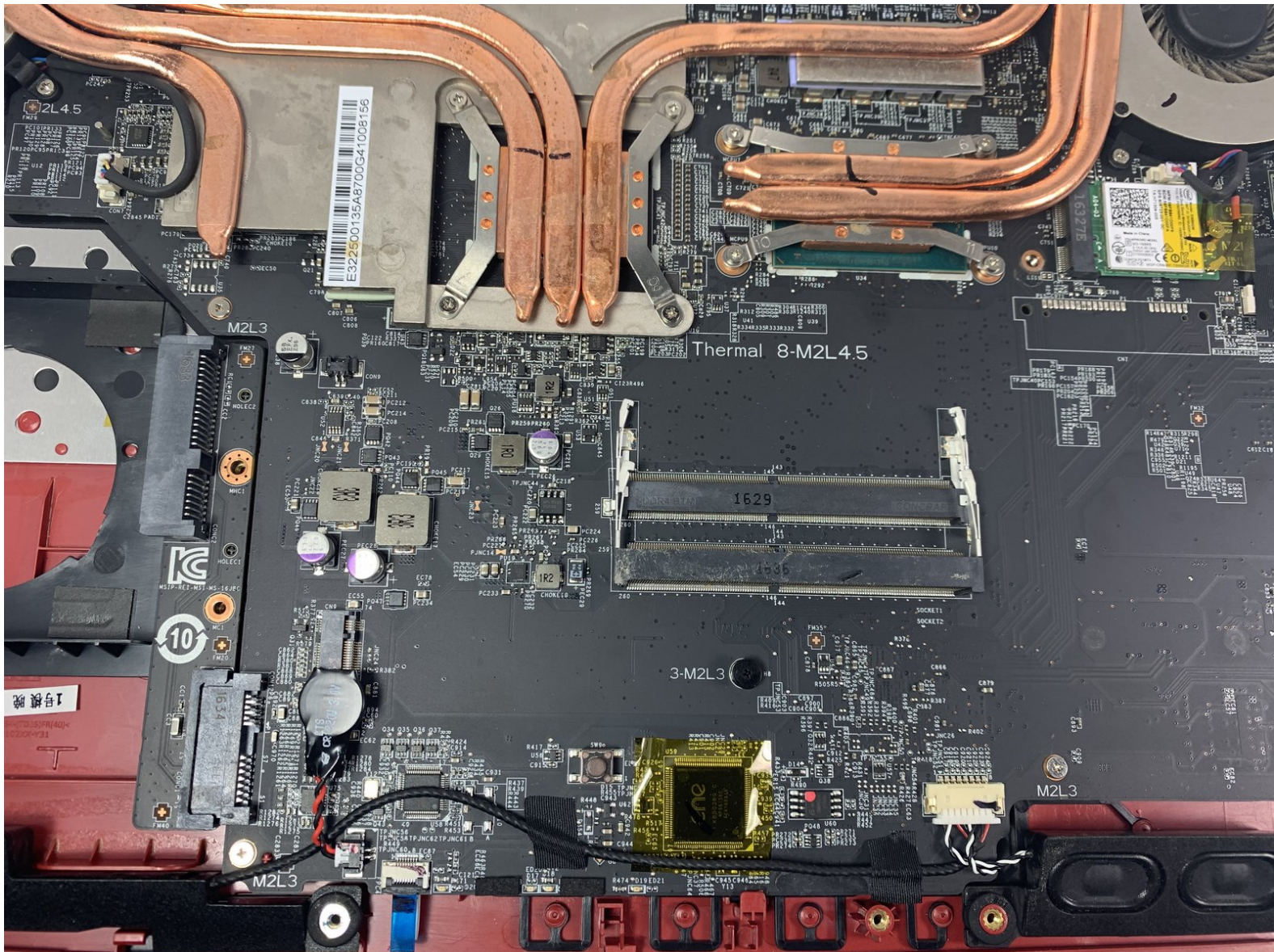




# MSI GP62MVR 6RF Leopard Pro RAM Replacement

How to replace the RAM in the MSI GP62MVR 6RF Leopard Pro.

Written By: Dawson



## INTRODUCTION

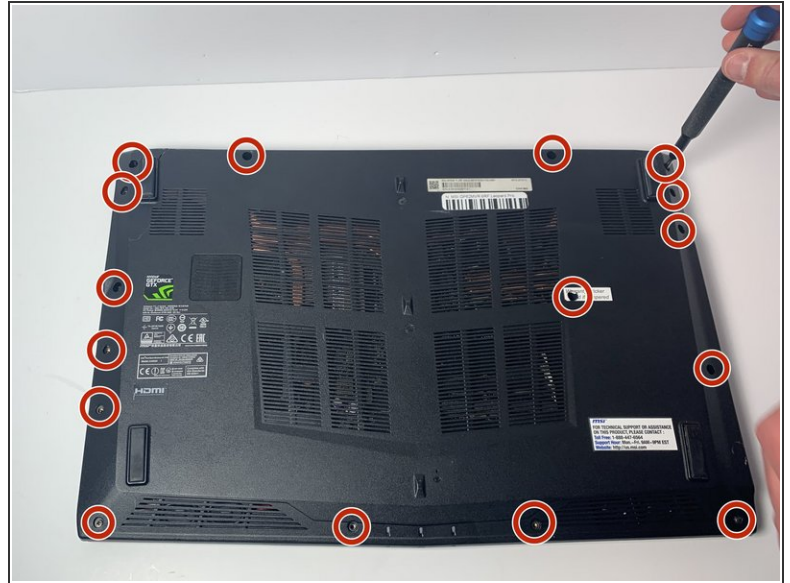
This guide demonstrates how to replace the Random Access Memory (RAM) in the MSI GP62MVR 6RF Leopard Pro laptop. It is a simple process with no special skills required. Avoid touching the circuitry when the case is open to avoid short-circuiting components or shocking yourself. If your laptop cannot turn on or fails to run programs, then the RAM will need to be replaced. Follow this guide to change the RAM in a MSI GP62MVR 6RF Leopard Pro.



### TOOLS:

- [Jimmy](#) (1)
- [Phillips #0 Screwdriver](#) (1)

## Step 1 — Bottom Cover



- Place the laptop upside down.
- Remove the sixteen 5.5 mm screws with a Phillips #0 screwdriver.



## Step 2




- Use the Jimmy tool to evenly pry loose the bottom cover.
- Ensure that all sides are detached from the plastic hinging before attempting to remove the bottom cover.

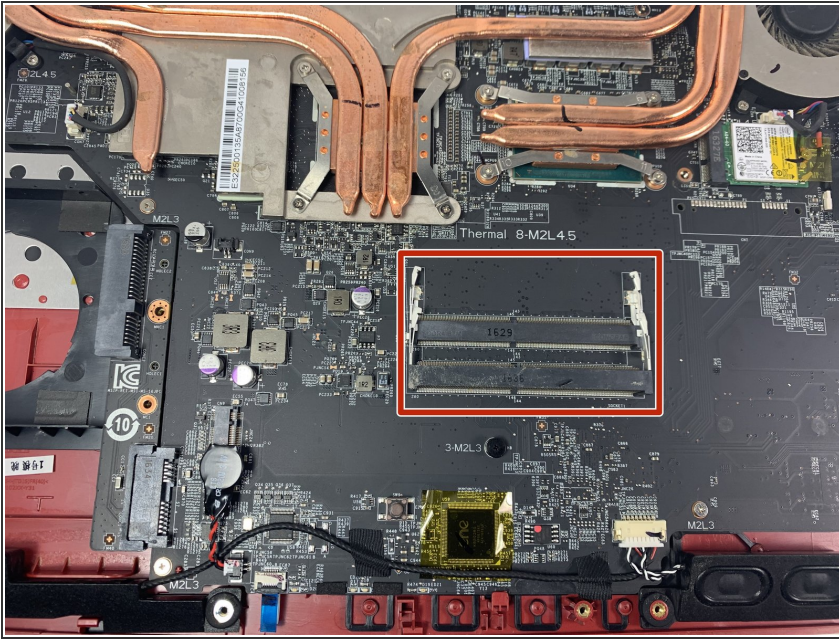
## Step 3



- Remove the back cover.

 Touching circuitry could damage components or result in personal shock; it is recommended that you now wear latex gloves to prevent both issues.

## Step 4 — RAM



- Remove the existing RAM cartridge.
- ⓘ The other slot can be used for another RAM cartridge.

To reassemble your device, follow these instructions in reverse order.