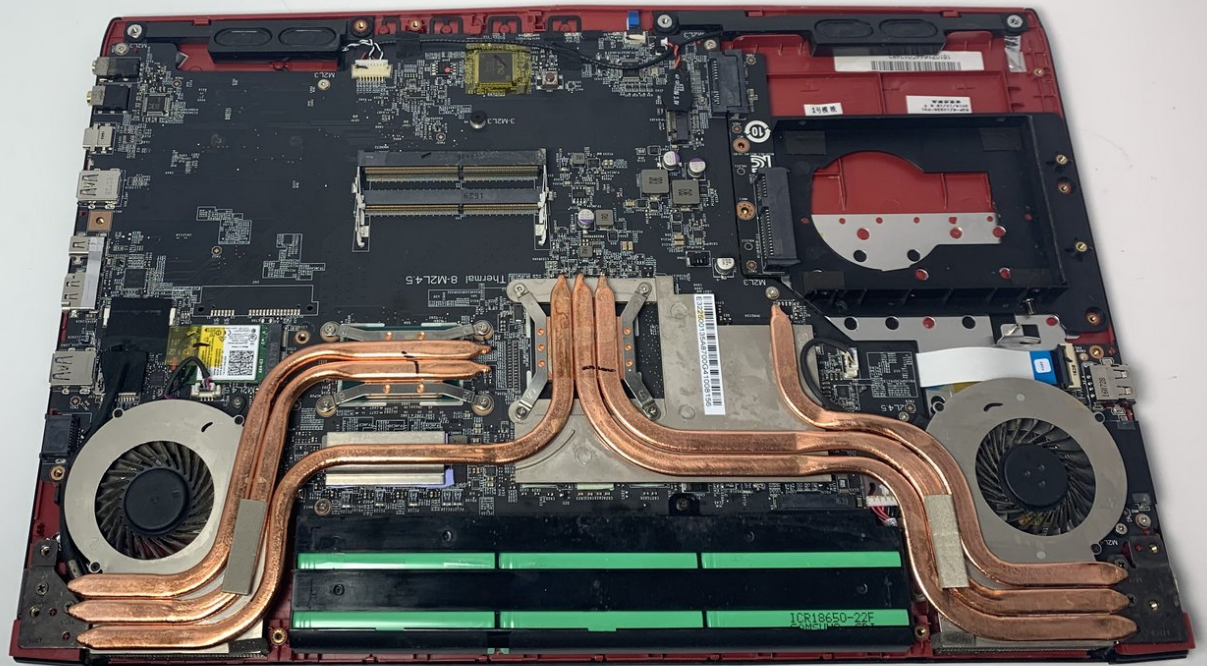




MSI GP62MVR 6RF Leopard Pro Fans Replacement

How to replace the fans of the MSI GP62MVR 6RF Leopard Pro.

Written By: Dawson



INTRODUCTION

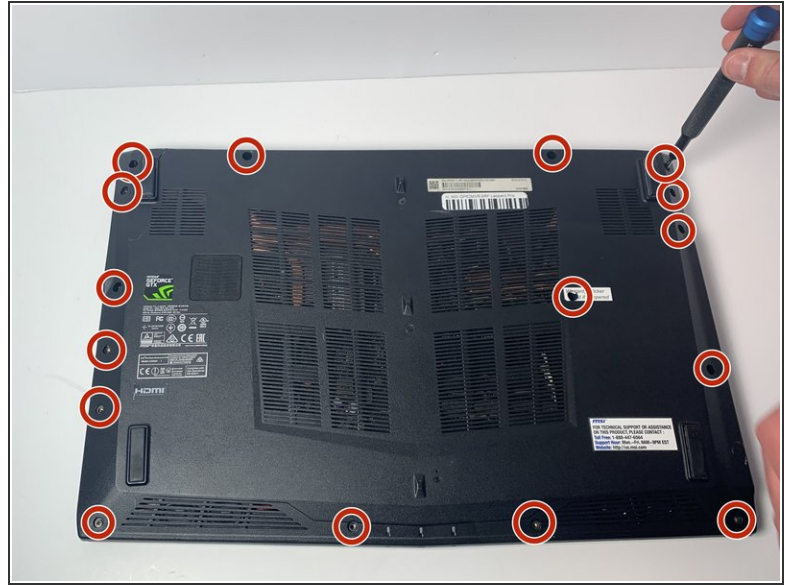
This guide demonstrates how to replace the fans in the MSI GP62MVR 6RF Leopard Pro laptop. It is a difficult process with no special skills required. Avoid touching the circuitry when the case is open to avoid short-circuiting components or shocking yourself. If your fans are not turning on or are turning slow, and the laptop is overheating, then the fans will need to be replaced. Follow this guide to change the fans in a MSI GP62MVR 6RF Leopard Pro.



TOOLS:

- [Jimmy](#) (1)
 - [Phillips #0 Screwdriver](#) (1)
-

Step 1 — Bottom Cover



- Place the laptop upside down.
- Remove the sixteen 5.5 mm screws with a Phillips #0 screwdriver.

Step 2



- Use the Jimmy tool to evenly pry loose the bottom cover.
- Ensure that all sides are detached from the plastic hinging before attempting to remove the bottom cover.

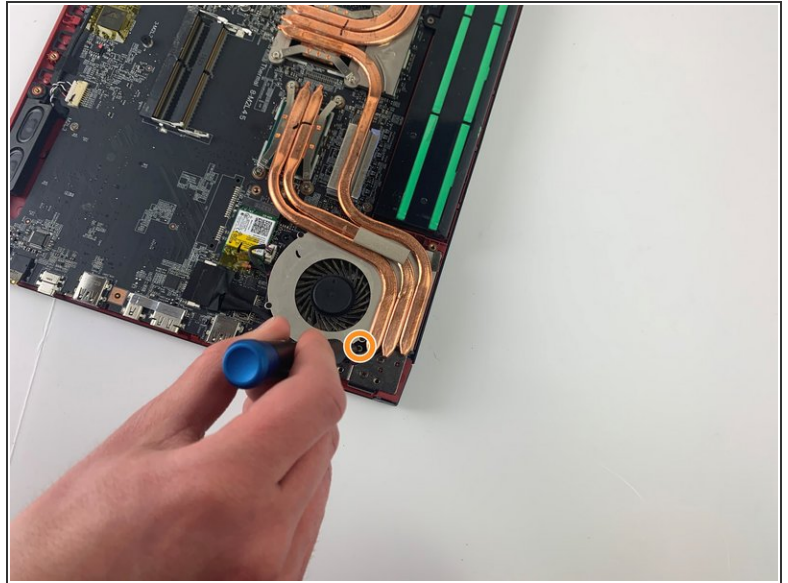
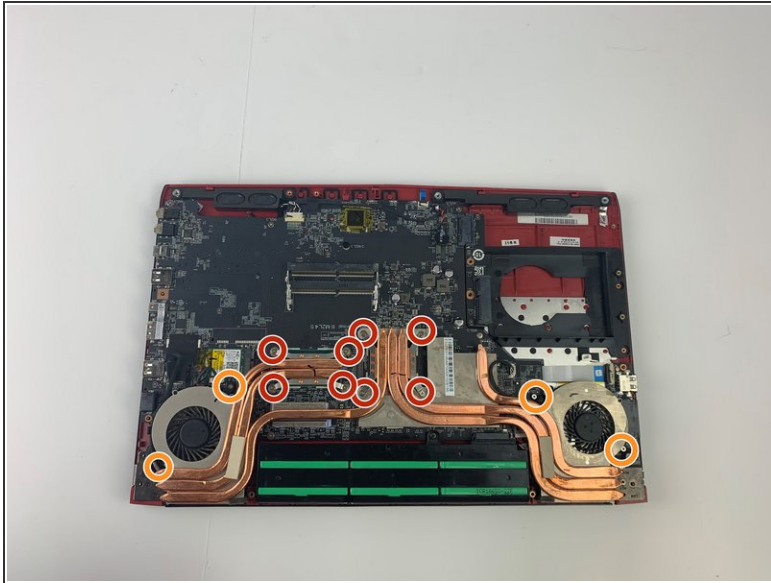
Step 3



- Remove the back cover.

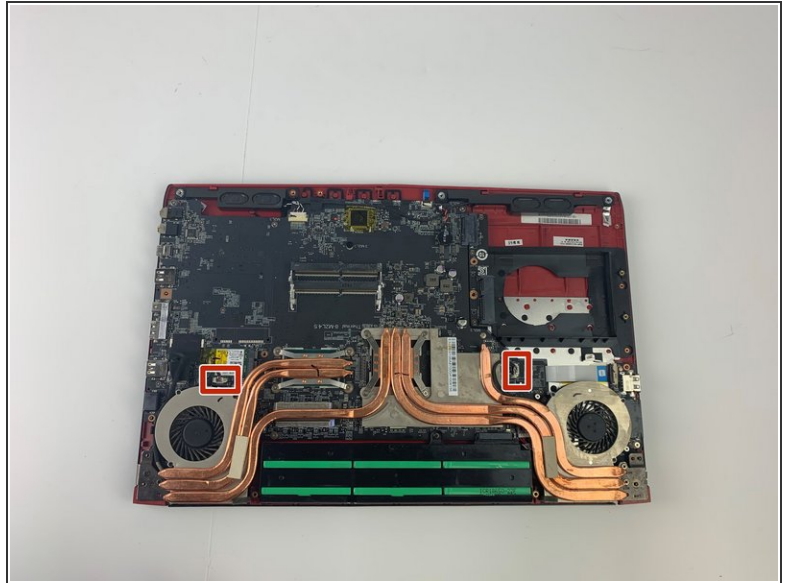
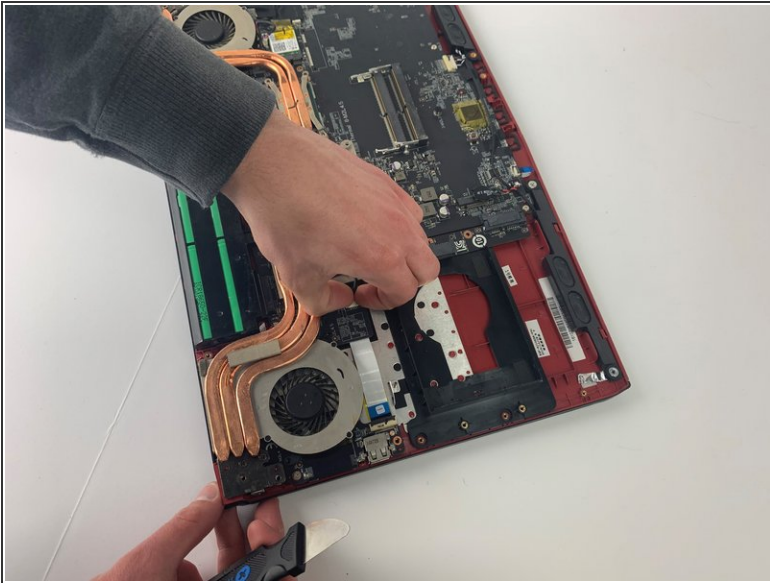
⚠ Touching circuitry could damage components or result in personal shock; it is recommended that you now wear latex gloves to prevent both issues.

Step 4 — Fans



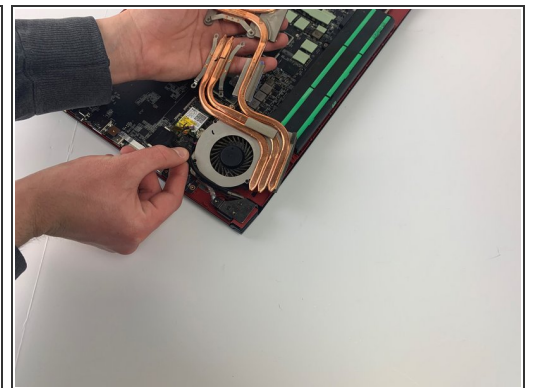
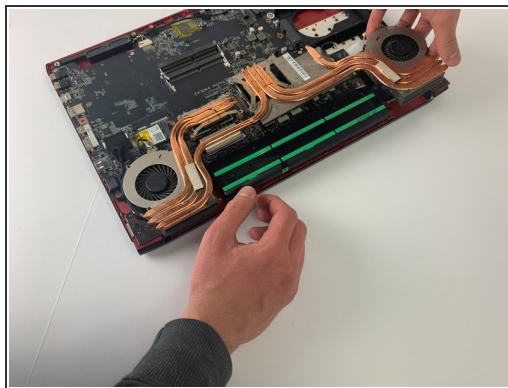
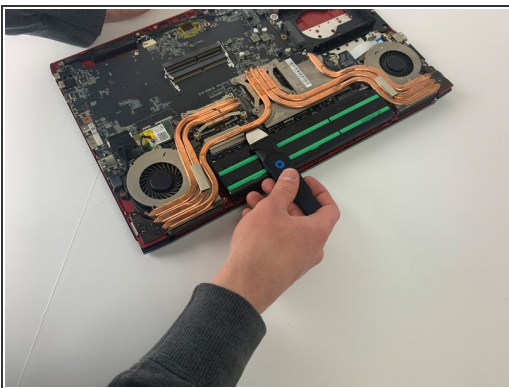
- Remove the eight 4.5 mm screws that hold the heat sink to the motherboard with a Phillips #0 screwdriver.
- Remove the four 4.5 mm screws holding the fan in place also using a Phillips #0 screwdriver.
- ⓘ Watch for the screw hidden under the wires highlighted in the second picture.

Step 5



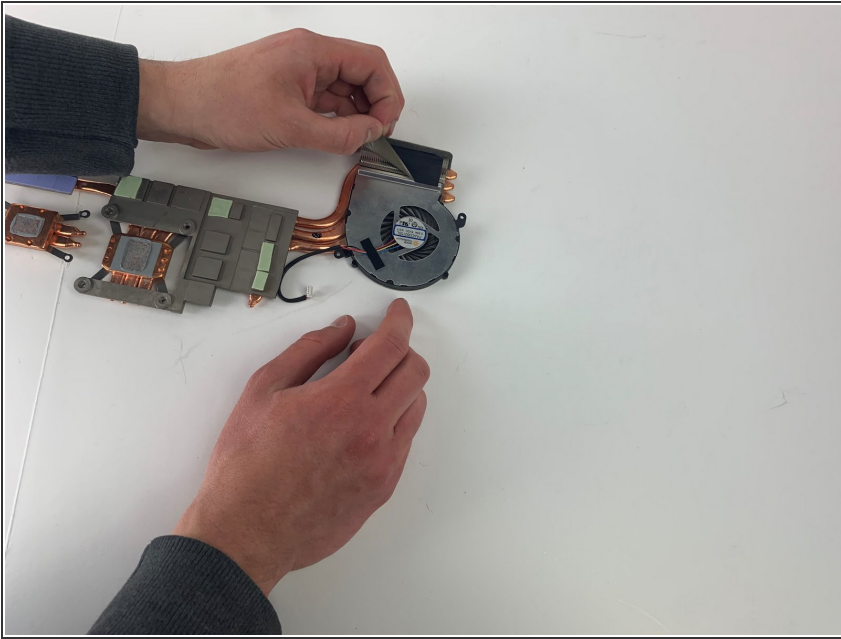
- Disconnect both power cables for the fans.
- ⓘ Make sure to pinch the power cables. It may require a bit of force.

Step 6



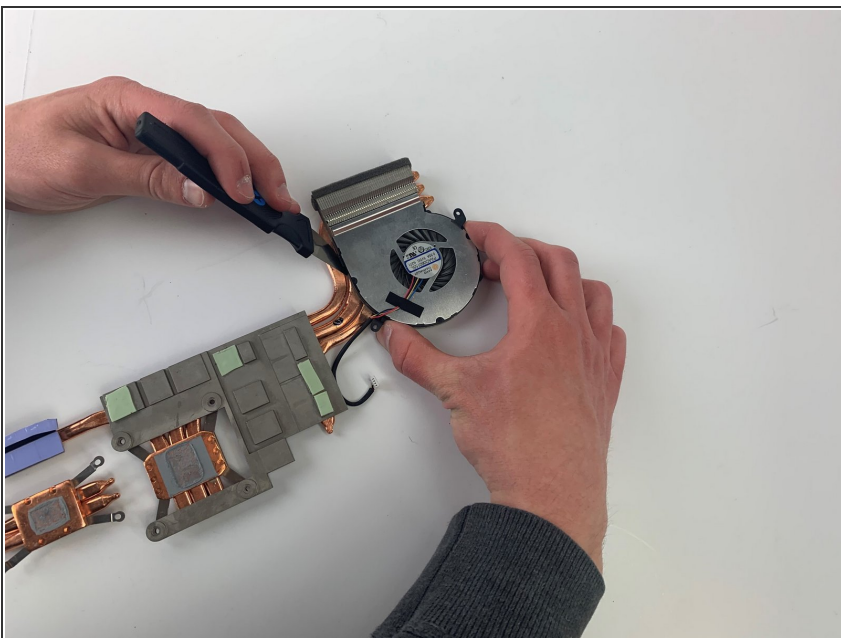
- Using the Jimmy tool, remove the adhesive pads securing the fans to the board.

Step 7



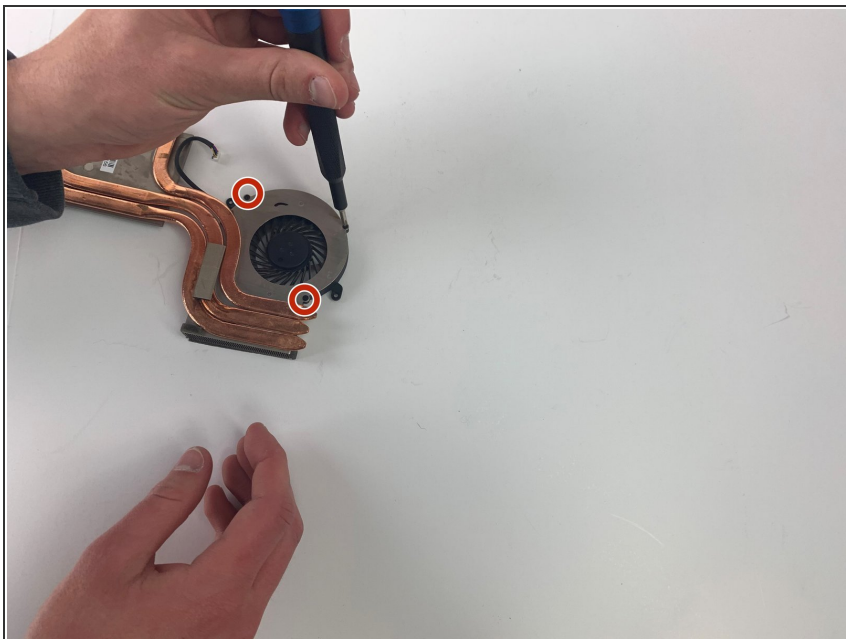
- Remove the black adhesive.

Step 8



- Separate the heat sink from the tab on the side holding the fan in place.

Step 9



- Remove the three 3.5 mm screws on each fan holding the fan to the heat sink using a Phillips #0 screwdriver.

To reassemble your device, follow these instructions in reverse order.