



Kenwood DRV-N520 Dashcam Motherboard Replacement

Replacing the motherboard in the Kenwood DRV-N520 Dashcam.

Written By: Stephen



INTRODUCTION

This guide will demonstrate the removal of the motherboard of the Kenwood DRV-N520 Dashcam.

This may be required if you are experiencing trouble powering on the device.

(it is recommended to check out our guides on the replacement of the fuse or capacitor as these are simpler problems that share the same symptoms)



TOOLS:

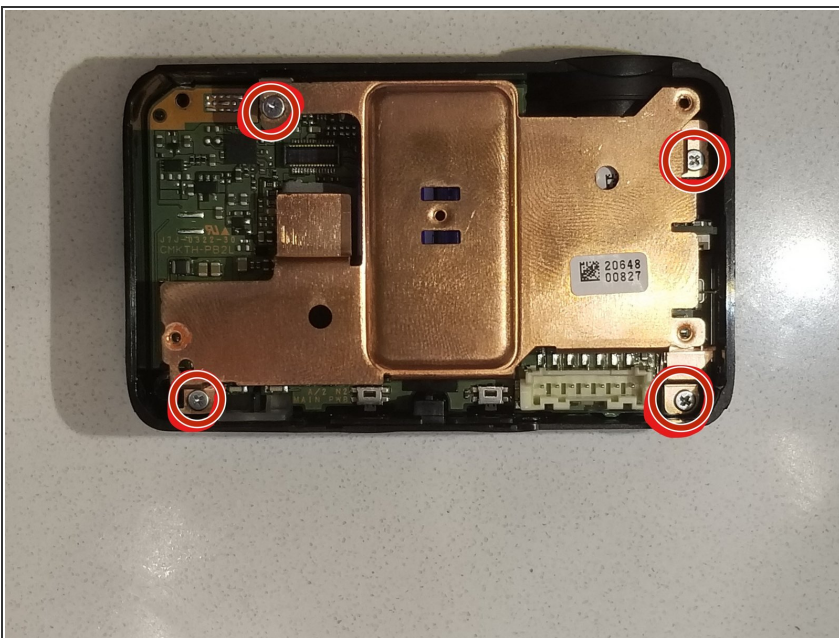
- [Phillips #0 Screwdriver](#) (1)
 - [Spudger](#) (1)
-

Step 1 — Motherboard



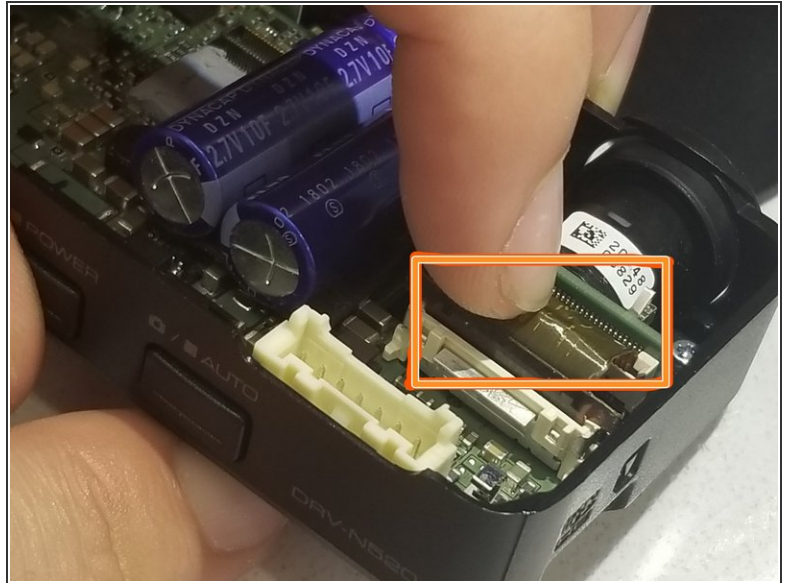
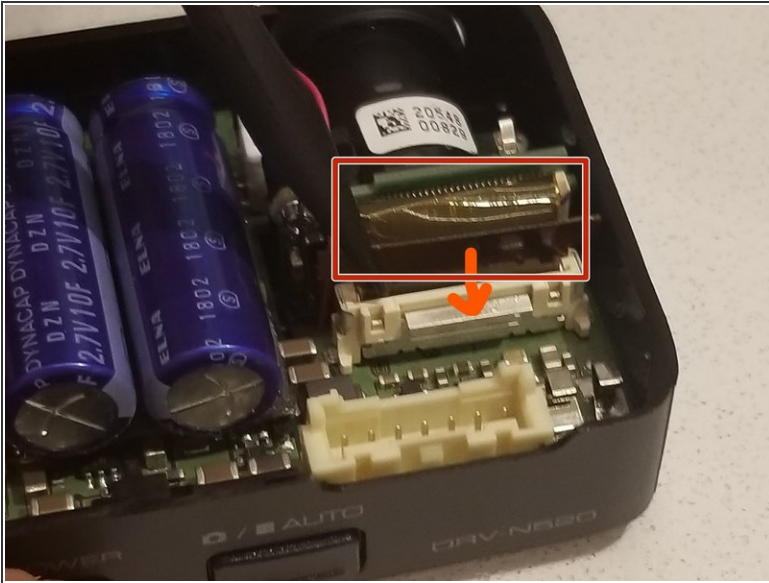
- Use a Phillips #0 screwdriver to remove the four 3mm screws in the device backing.
- Remove the back cover.

Step 2



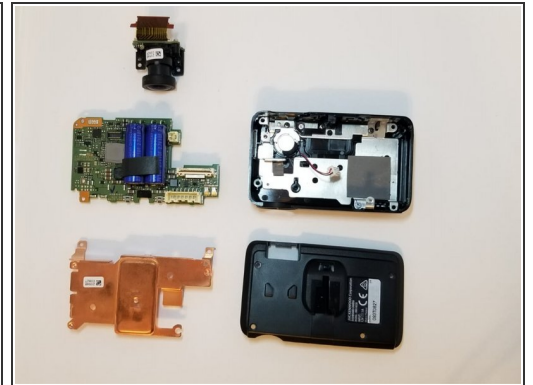
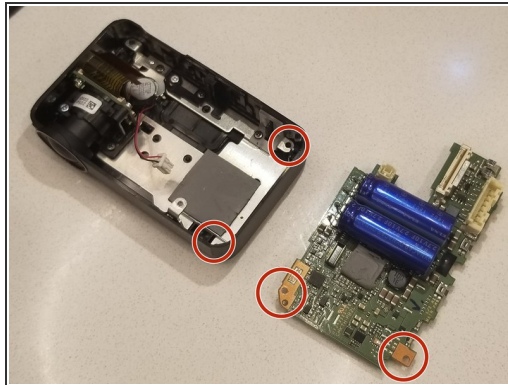
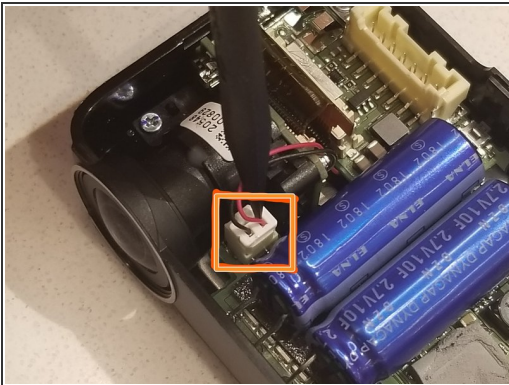
- Remove the four 3mm screws in the copper plate using a Phillips #0 screwdriver.
- Remove the copper plate to gain access to the motherboard.

Step 3



- Remove the ribbon cable by gently pulling on it while using a spudger to apply pressure to the lever (orange arrow) holding it in place.

Step 4



- Disconnect the speaker connection from the circuit board by using your fingers to apply pressure to the clip holding it in place.
- Finally, remove the two screws from the two corners of the motherboard using a Phillips #0 screwdriver.
- Remove the motherboard from the device.

This will conclude the removal of the circuit card. Please refer to the troubleshooting guide for any question.