



HP Envy x360 15m-cn0012dx TrackPad Replacement

This guide will help replace a faulty trackpad on an HP Envy x360 15m-cn0012dx

Written By: Grace Daleki



INTRODUCTION

If your HP Envy x360 m Convertible (Model 15m-cn0012dx) trackpad is not responding use this guide to replace it

A faulty trackpad does not respond to touch or can be lagging.

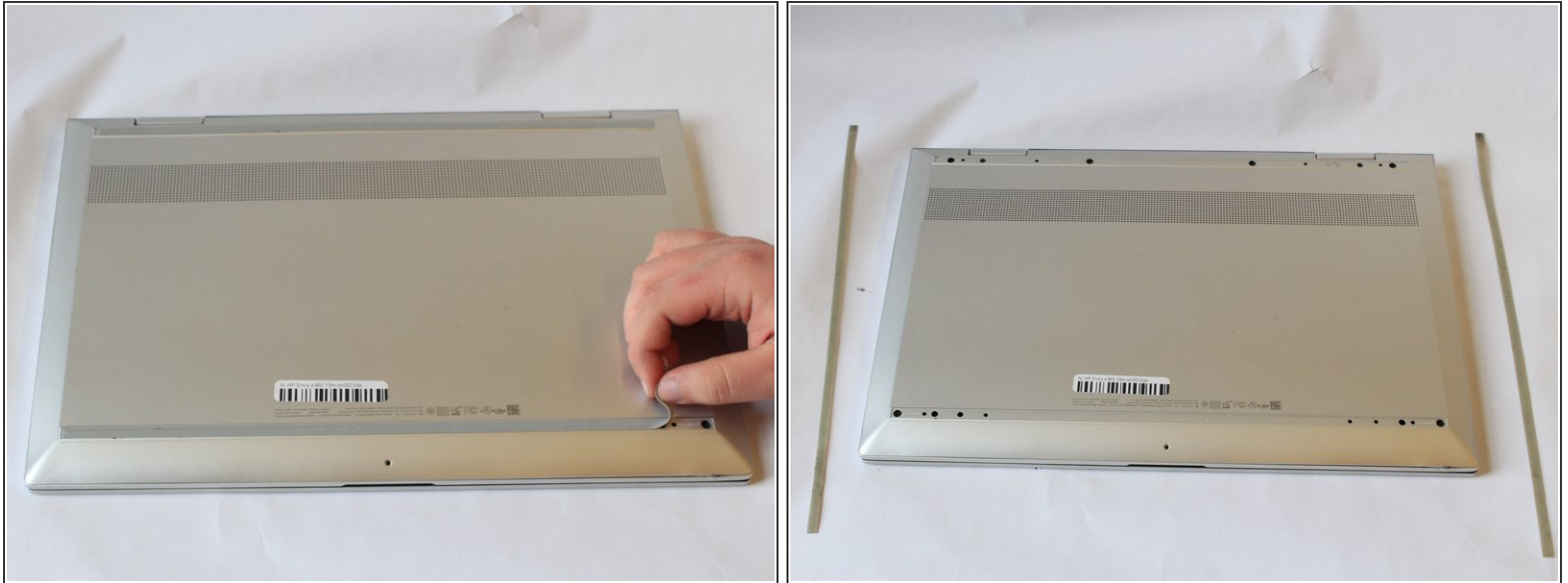
Before starting, make sure all external connections are unplugged and the computer is turned off.



TOOLS:

- [iFixit Opening Tool](#) (1)
 - [iFixit Opening Picks \(Set of 6\)](#) (1)
 - [Phillips #0 Screwdriver](#) (1)
-

Step 1 — TrackPad



⚠ Make sure the computer is turned off, and remove all cables.

- Set the laptop face down.
- Peel back the grey screw guards, along the top and bottom edge of the back case. It may be helpful to use a spudger to get started.
- i** Peel slowly to avoid tearing the rubber covers.

Step 2



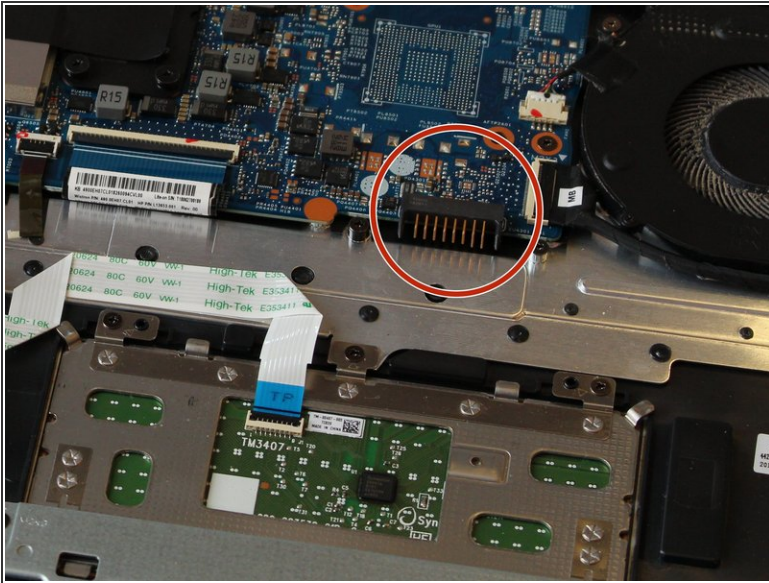
- Using the Phillips #0 screwdriver, remove the seven 5mm screws from the back case.

Step 3



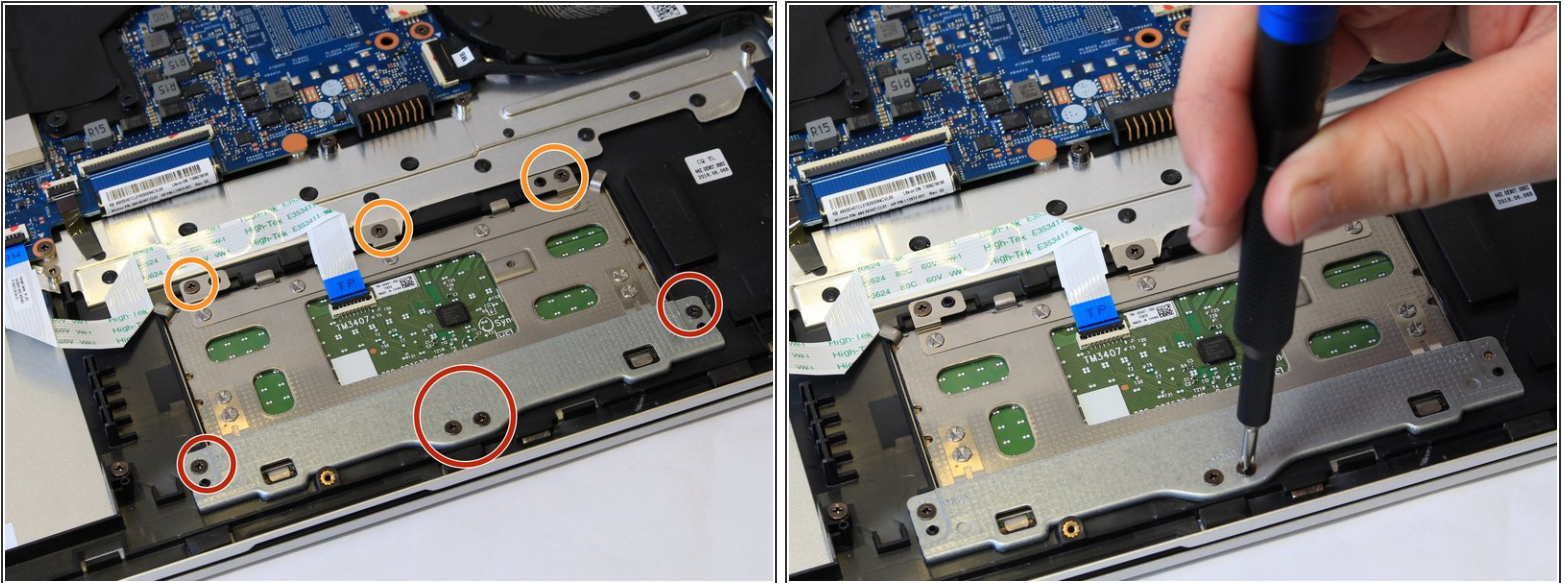
- Pry open the back cover using the iFixit Opening Tool.
- While using the tool, place a pick at each corner of the computer (be careful and do it slowly).
- Once all the corners are slightly lifted, carefully pop off the back cover.

Step 4



- i** The battery rest above the trackpad and connects to the black port with the gold pins at the bottom right corner of the motherboard.
- Remove the screws around the perimeter of the battery holding it down with a Phillips #0 screwdriver.
 - Disconnect the battery cable from the motherboard.
 - Remove the battery by lifting it out of the laptop case.

Step 5



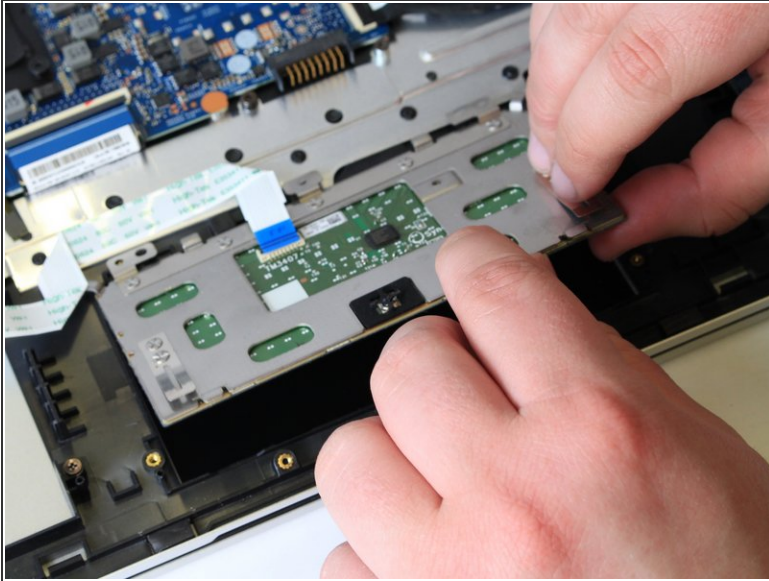
- Using a Phillips #0 screwdriver, remove the four 4mm screws from the metal plate covering the bottom edge of the trackpad.
- Using a Phillips #0 screwdriver, remove the three 4mm screws from the top edge of the trackpad.
- Remove the metal plate.

Step 6



- Use the iFixit opening tool, lift up the black lock tab of the ZIF connector.
- Pull out the ribbon cable from the trackpad connector.

Step 7



- Remove the trackpad from the device, lifting the bottom edge first.

To reassemble your device, follow these instructions in reverse order.