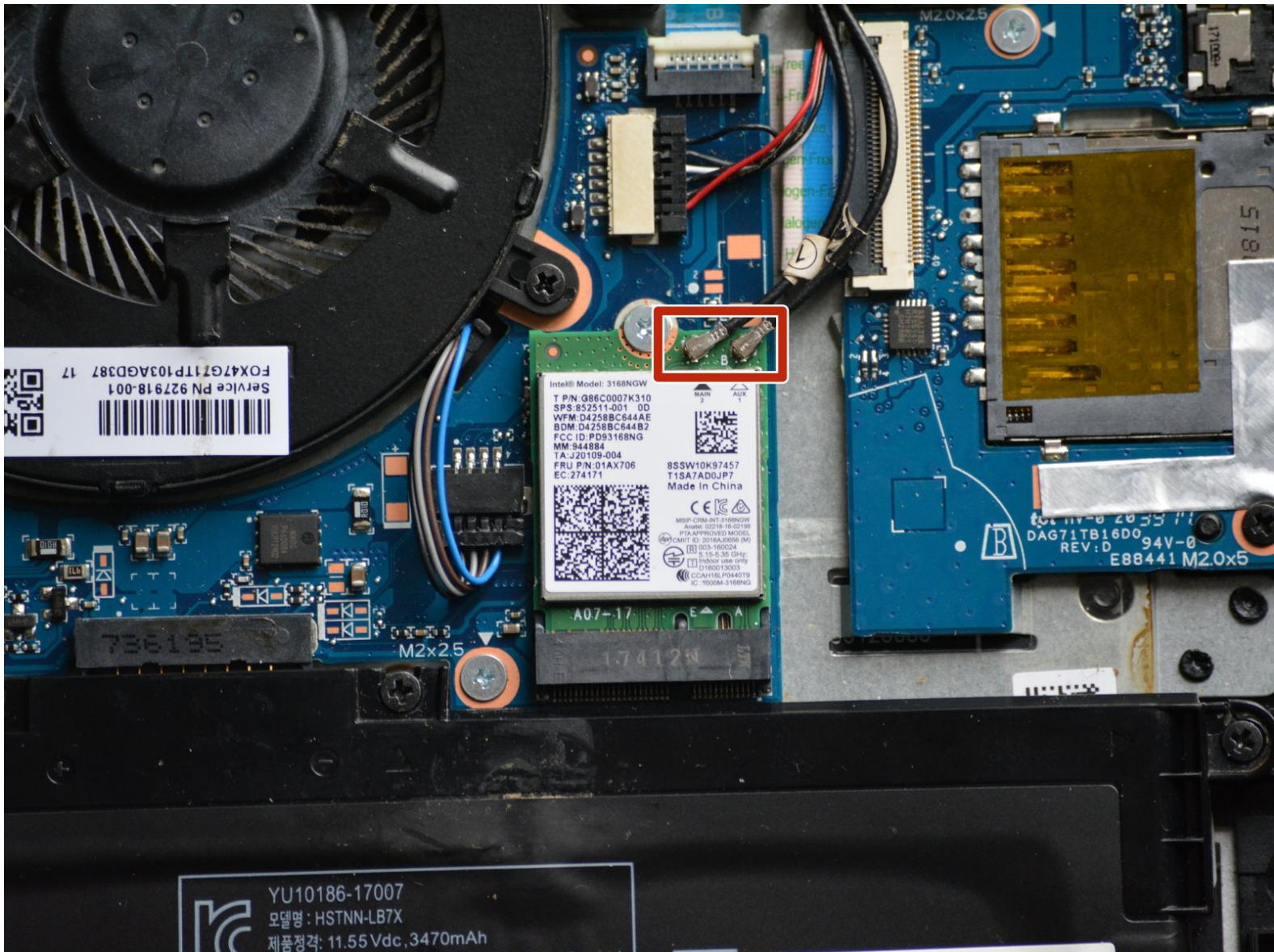




# HP Pavilion 14-bk061st WLAN Card Replacement

This guide will show how to safely remove the WLAN Card from an HP Pavilion 14-bk061st laptop

Written By: Stefano Lo Re



---

## INTRODUCTION

Use this guide to replace the WLAN card in your HP Pavilion 14-bk061st laptop.

The WLAN card is a computer component that allows the device to connect to the internet through a wireless signal. In this computer, the WLAN card also handles Bluetooth connections. Bluetooth is another means of wireless communication most often used to connect and transmit information between devices that are in close proximity, usually about 30 feet or less.

Before using this guide, if there is an internet connection issue or Bluetooth connection issue, try using the built-in software diagnostic tools that your computer provides to see what the problem is first.

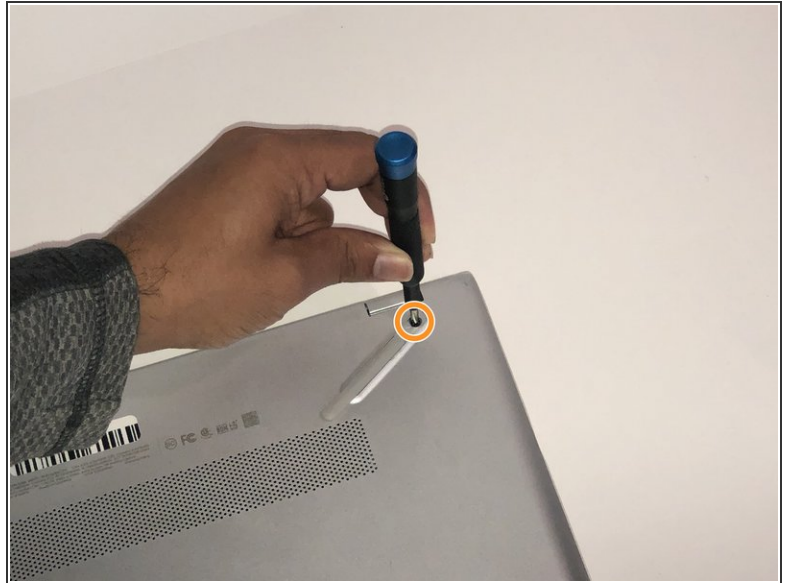
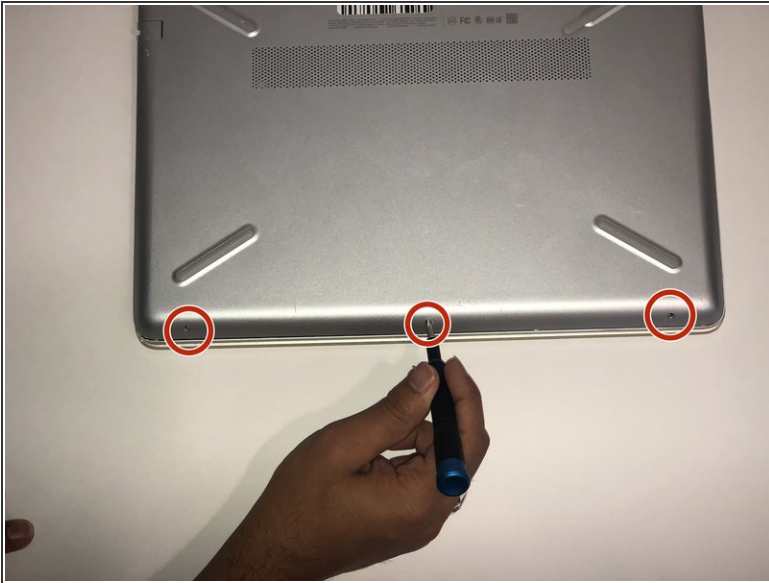
Remember to power off the computer, and disconnect all external components, including the power adapter, that are plugged into it before starting the repair.



### TOOLS:

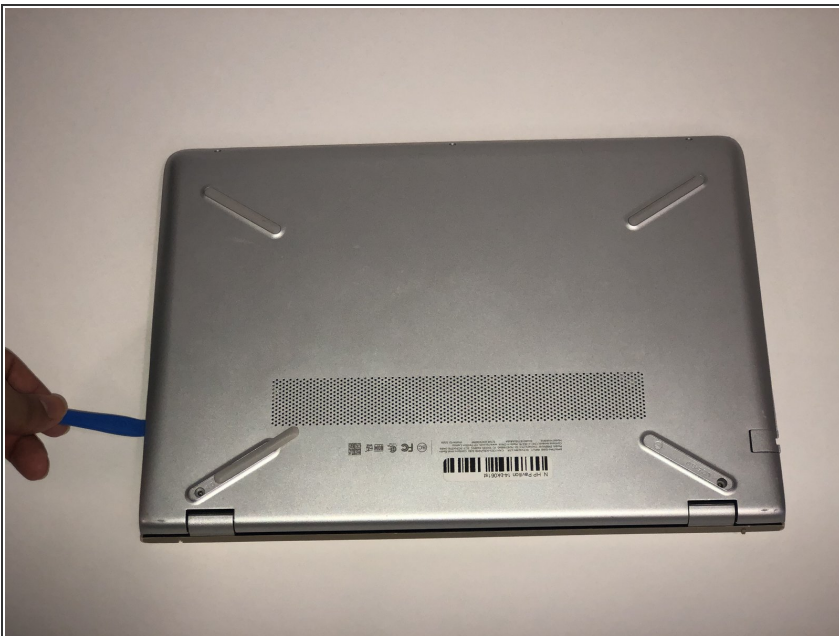
- [iFixit Opening Tools](#) (1)
  - [JIS #1](#) (1)
-

## Step 1 — Back Panel



- Remove the three 5.7 JIS #1 screws from the bottom of the laptop.
- Remove the two 6.7mm JIS #1 screws from underneath the feet of the laptop close to the exhaust vent.

## Step 2



- Unclip the back plate using a plastic opening tool.

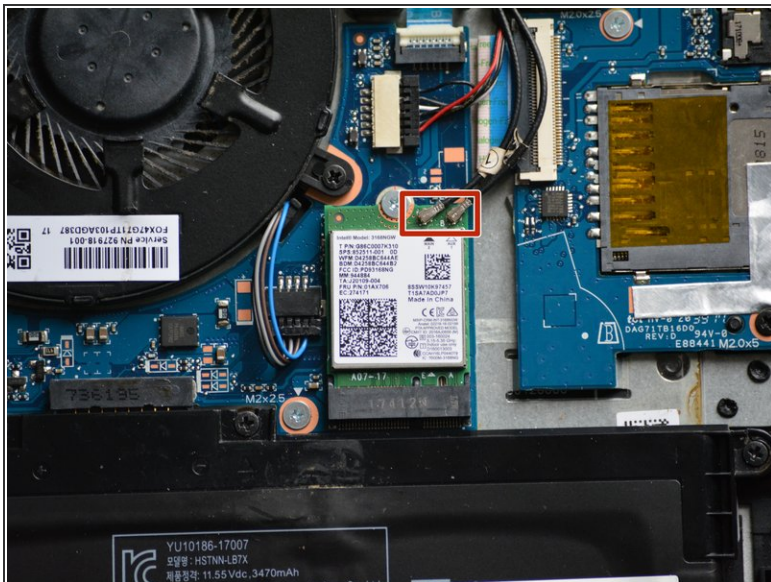


### Step 3



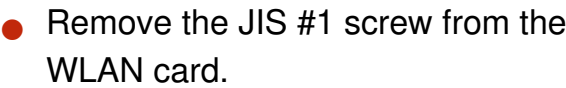
- Carefully remove the back plate from the laptop.

### Step 4 — WLAN Card

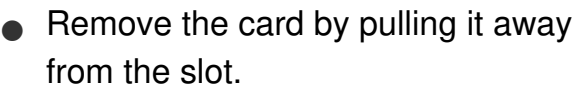


- Disconnect the two Wi-Fi and Bluetooth antenna wires by gently pulling them away from the board.

## Step 5



## Step 6



To reassemble your device, follow these instructions in reverse order.