



How to Replace the GE Refrigerator Ice Dispenser Solenoid SN:GSL25IGXL LS

If you try to use the ice dispenser on a GE...

Written By: John E McKee



INTRODUCTION

If you try to use the ice dispenser on a GE Refrigerator (SN:GSL25IGXL LS), but the ice is getting stuck in the refrigerator door, this could be a sign that the solenoid is bad.

The solenoid is connected to an insulated flap that will open and close when using the ice dispenser.

Before using this guide, check the flap where the ice is dispensed to make sure there is no debris. If there is something blocking the flap from opening , remove the debris and try to use the ice dispenser.

Before starting, make sure all power is shut off, you will be touching a circuit board.

TOOLS:

Phillips #0 Screwdriver (1)

Step 1 — Ice Dispenser Solenoid



- ① Turn off all power to the refrigerator before disassembling.
- Unplug the refrigerator to turn off the power. You can also turn off the power using the breaker panel.

Step 2



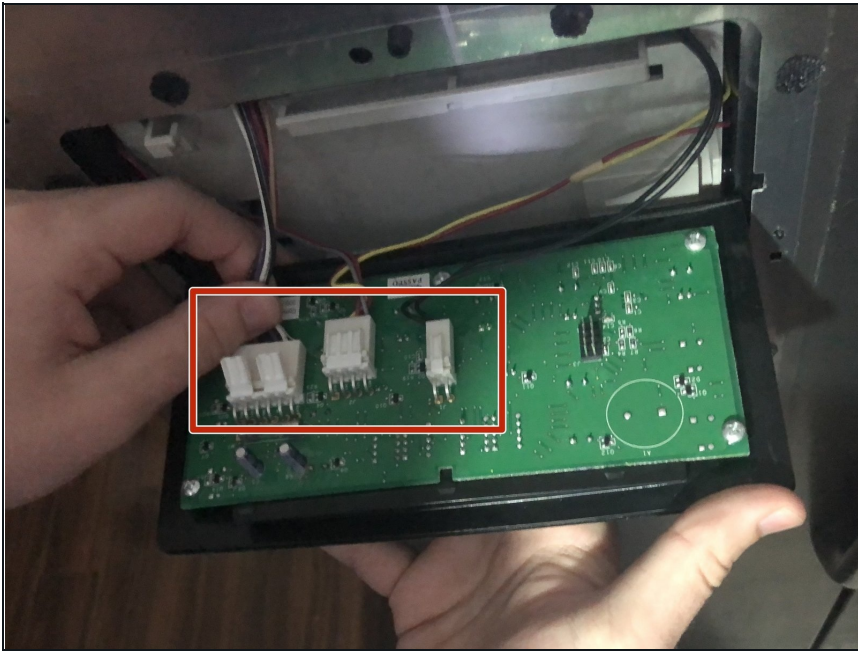
- First, remove the plastic trim. It is held in by six clips; you can use a pry tool or your hands.

Step 3



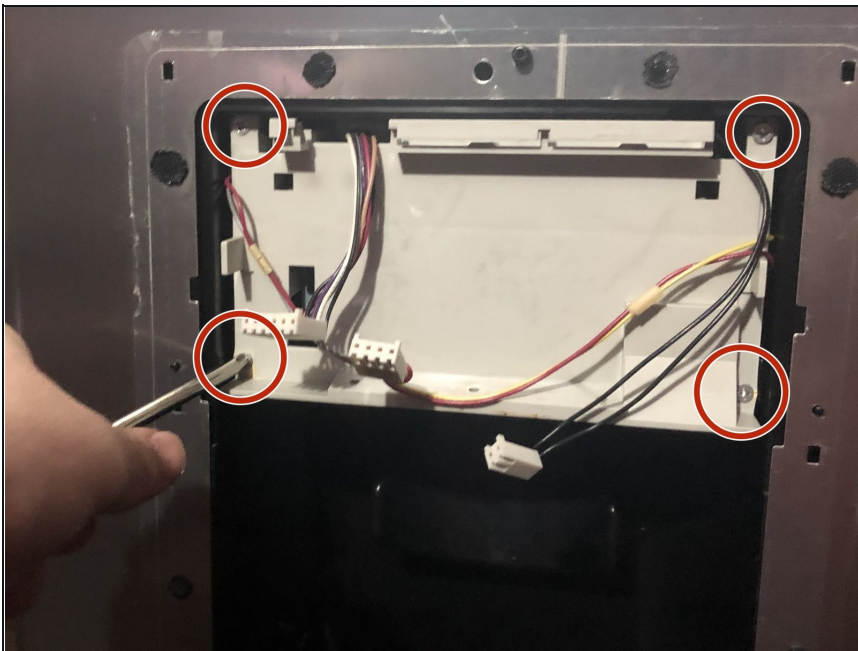
- Remove the dispenser interface by pushing up, then pulling the bottom out.
- ① This will reveal the wire harnesses that will be disconnected in the next step.

Step 4



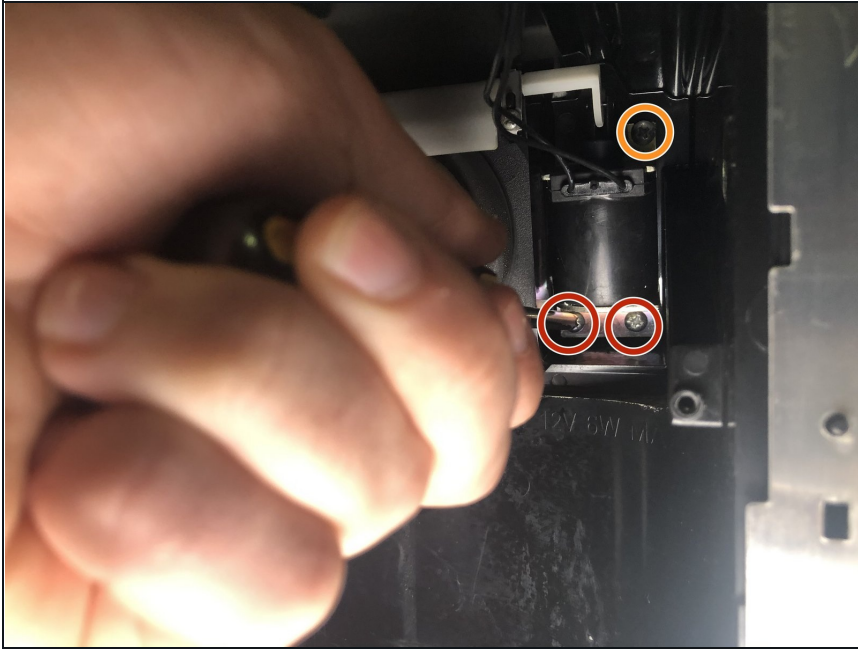
- Disconnect the three wire harnesses.
- ⓘ They might be tight, so be careful when pulling on them.
- Once the wires are disconnected, set the interface aside.

Step 5



- Remove the four 3.8mm screws in each corner using a Phillips #0 screwdriver and remove the housing.
- ⓘ Once it is removed, the solenoid will be exposed.

Step 6



- Remove the bottom two 2.5mm Phillips screws first.
- Loosen the top Phillips screw and remove the solenoid.
- ☑ After this step is complete, replace the old solenoid and reassemble following the steps in reverse order.

To reassemble your device, follow these instructions in reverse order.