



Nikon D500 Top Panel Removal

This is the steps to remove the top assembly of...

Written By: Wolphin



INTRODUCTION

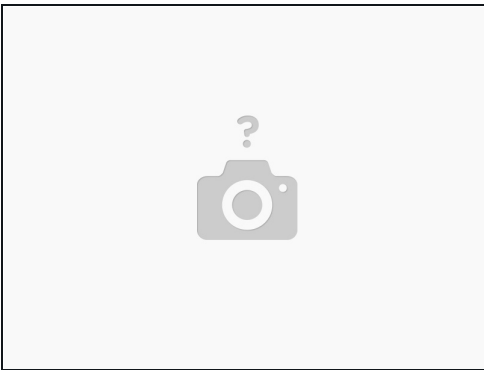
This is the steps to remove the top assembly of the camera.

TOOLS:

[Phillips #00 Screwdriver](#) (1)

[Prying and Opening Tool Assortment](#) (1)

Step 1 — Remove Memory Card(s) and Battery



- Remove the Memory Card(s) from the camera
- Remove the Battery from the Camera, and close the battery compartment cover

Step 2 — Remove 2 exposed screws



- Remove the 2 screws beside the memory slots, then close the cover.
- Note: make sure to remove the memory cards first!

Step 3 — Remove 2 screws under grip



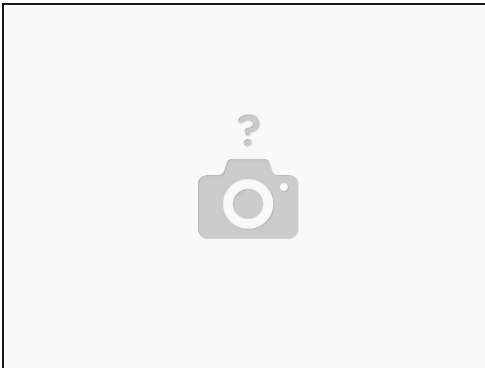
- Remove the 2 screws under the rubber grip part by peeling back the rubber grip
- Try not to damage the double sided adhesive under the rubber.

Step 4 — Remove 2 screws under rear grip



- Remove the 2 screws under the rubber pad marked in red.
- Try not to damage the double-sided adhesive under the rubber.
- Note: There is a 3rd screw under the flap, which holds the back to the top (marked in yellow). If needing to remove the back panel not just the memory cover flap, it can be removed at this time as well.

Step 5 — Lift out panel



- Lift out the assembly panel, it should come free without much force.
- May open the panel to release it.

Step 6 — Remove top screw



- Remove the screw above the viewfinder

Step 7 — Remove the bottom panel plate



- Remove the 4 screws holding the plate to the bottom.
- Remove the bottom plate

Step 8 — Remove screws from the bottom



- Remove the 4 screws (1 was under the plate removed under the last step)

Step 9 — Remove Screw under grip



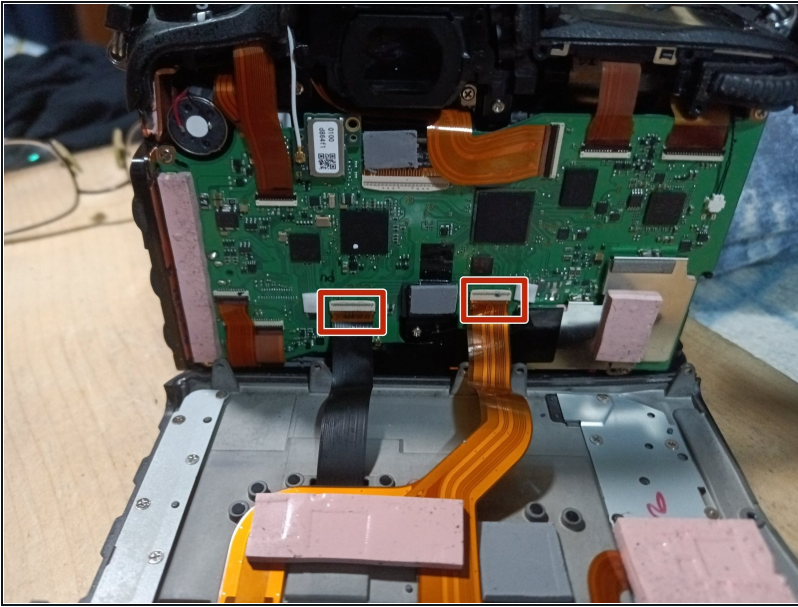
- Remove the screw under the grip, if it has not been removed doing a previous step

Step 10 — Remove Screw on Left



- Remove the exposed screw on the Left side

Step 11 — Carefully remove the back assembly



- Carefully pull the back plate off the camera
- There are 2 ribbon cables that need to be disconnected from the main board to free the rear panel from the camera.
- To release the cables by flipping up the tap on the side away from the cable
- When reconnecting the cables, make sure the cables are fully seated before flipping the latch back down.
- The black cable goes to the LCD (on the tilt screen), the other one goes to the buttons.
- The LCD cable does have less slack, so is easier to release first, and reconnect last.

Step 12 — Remove Grip



- Carefully remove the Rubber grip from the camera
- Careful to not damage the double-sided adhesive

Step 13 — Remove the Left Rubber



- Carefully remove the Rubber grip from the camera
- Careful to not damage the double-sided adhesive

Step 14 — Disconnect the diopter



- Remove the diopter cap from the end of the diopter (use a flat head or pry tool)
- Un-screw the phillips screw from the diopter
- When reconnecting, make sure the cap is seated in correctly and the double sided tape is not damaged (or replace)
- There is a notch which the indicator has to seat into, or it will not sit down correctly when it is reinstalled.

Step 15 — Remove Screw on Right



- Remove the screw that had been hidden under the memory slot cover.

Step 16 — Remove Front Screws



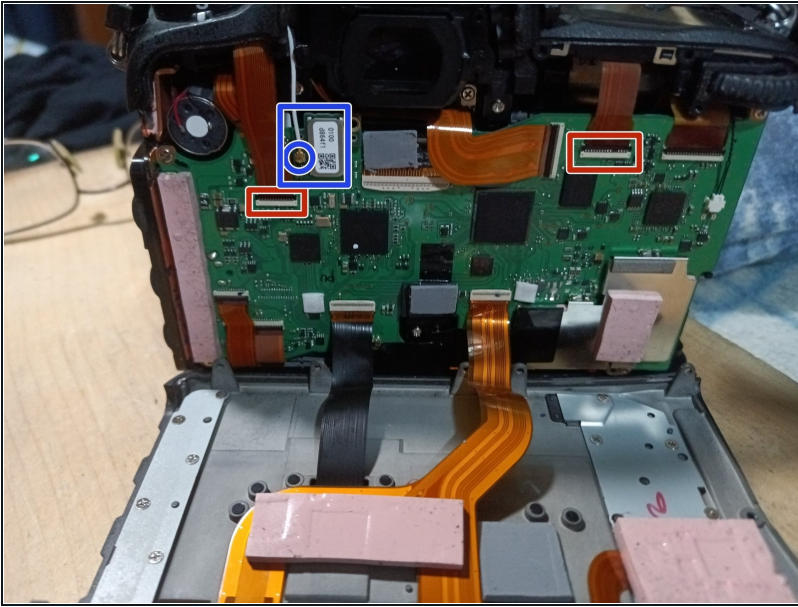
- Remove the screw under the top assembly, had been hidden by the grip.
- Remove the 2 screws from the bottom of the mirror box
 - Remove the lens or lenscap prior to doing this step to gain access, then reattach.
- Remove the screw from beside the accessory socket

Step 17 — Remove Screw on Left



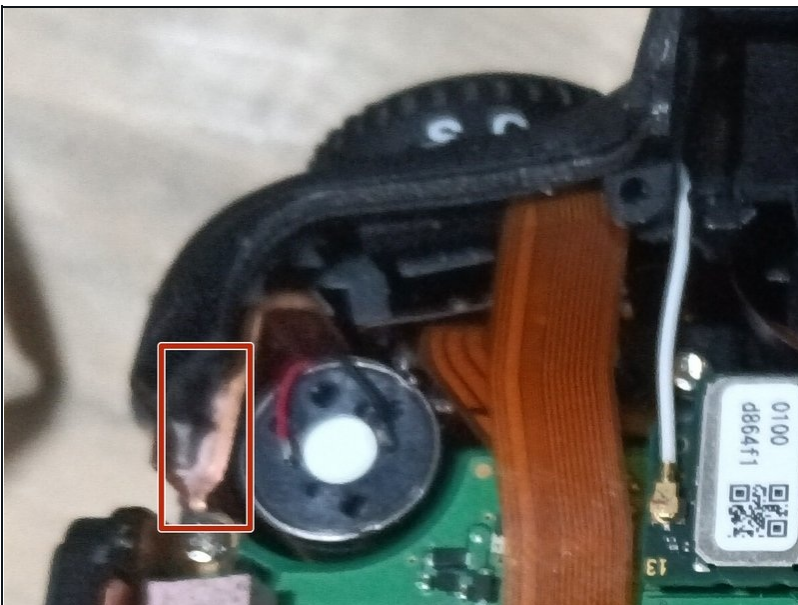
- Remove the screw from the left side, had been hidden under the rubber

Step 18 — Disconnect from main board



- Disconnect the 2 ribbon cables from the main board (Red boxes)
- Lift the black tabs above the cables to release the cables
- When reseating the cables, make sure they are fully seated before closing the locking tab
- Disconnect the wifi sub-board with the wifi cable from the main board (Blue Box) or gently disconnect the wifi antenna (Blue circle)

Step 19 — Lift Top assembly free



- Carefully lift the top assembly free.
- Note, there is a thermal pad on the left hand side, almost right under where the strap lug is. Red Box. Careful to not damage it.

To reassemble your device, follow these instructions in reverse order.

Careful of the thermal pad on the left side when placing the top assembly back onto the camera.