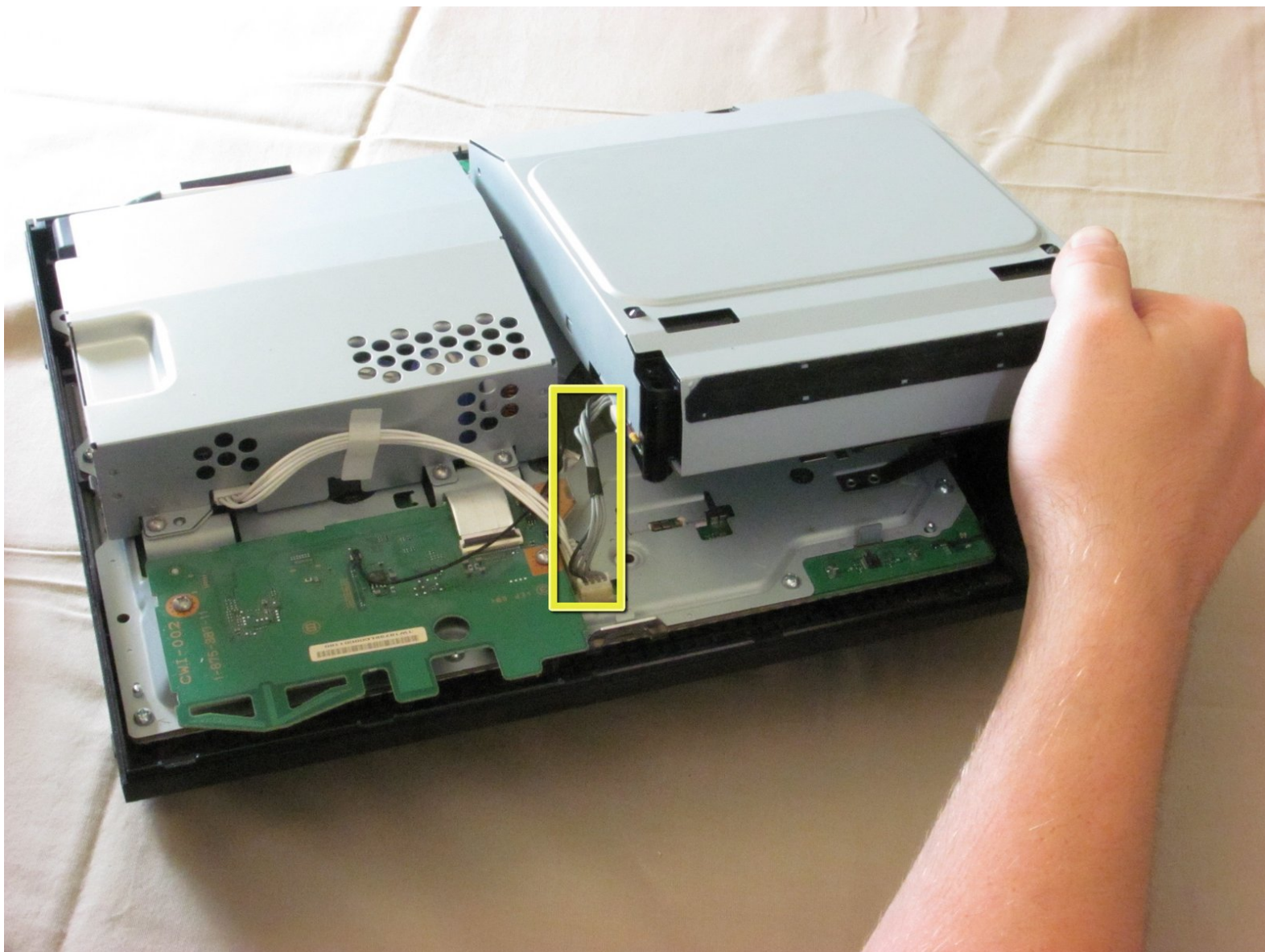




Playstation 3 Optical Drive Replacement

Written By: iDeleted



INTRODUCTION

This guide explains how to take apart the Sony PlayStation 3 optical drive. These steps are useful for repairing or replacing the optical drive.

TOOLS:

- [Phillips #00 Screwdriver](#) (1)
 - [Phillips #2 Screwdriver](#) (1)
 - [Spudger](#) (1)
 - [T10 Torx Screwdriver](#) (1)
-

Step 1 — Top Cover



- Remove the rubber screw cover near the hard drive cover with a spudger.

Step 2



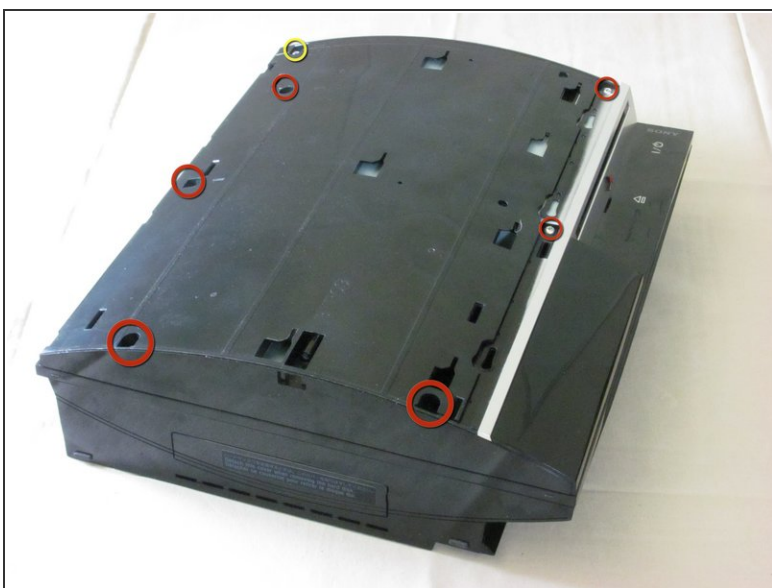
- Remove the screw holding the top cover in place with a Torx T10 screwdriver.

Step 3



- Slide the top cover down about half an inch.
- Lift the cover off of the PS3.

Step 4



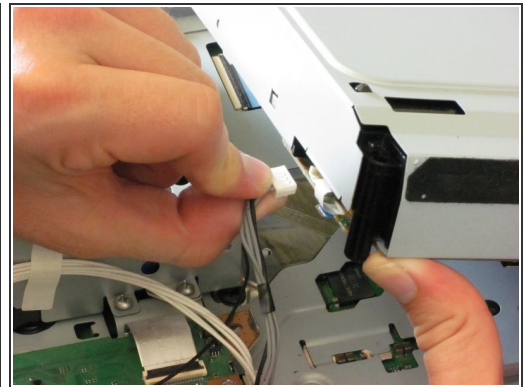
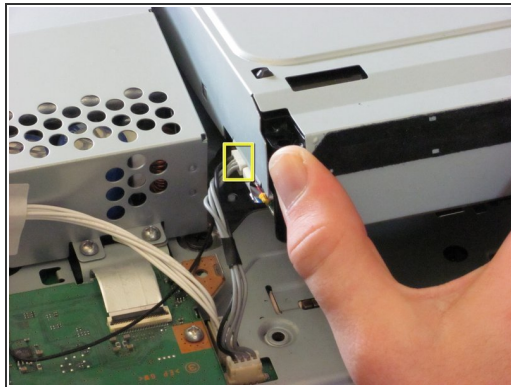
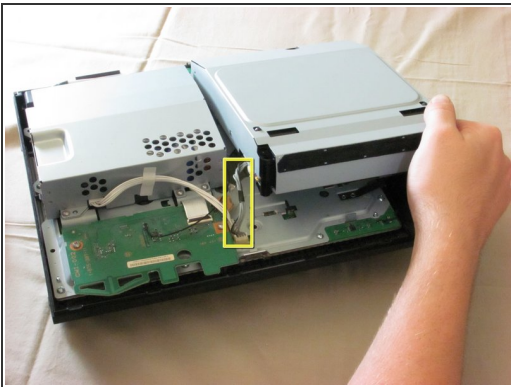
- Remove the seven screws in the top cover with a Phillips #2 screwdriver.
- ❗ One of the screws is shorter than the others. The short screw is marked in yellow.

Step 5



- You can now lift off the top cover.

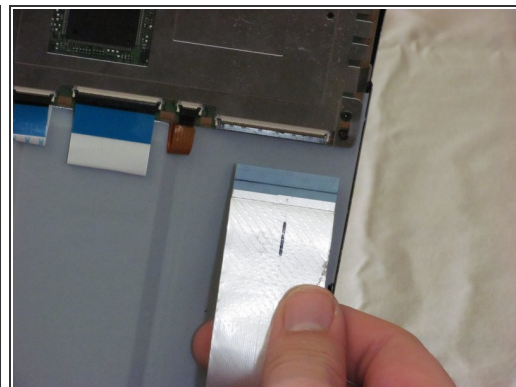
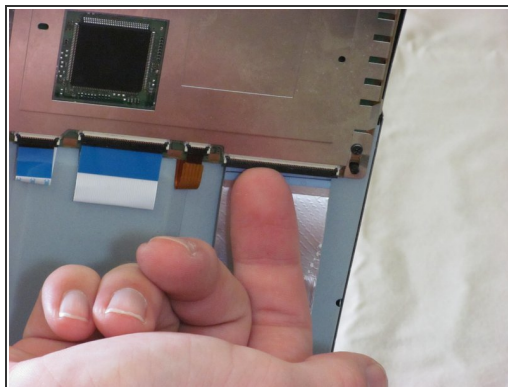
Step 6 — Optical Drive



- Lift the optical drive enclosure and disconnect the grey wires.

⚠ Do not lift it too far up before disconnecting the wires.

Step 7



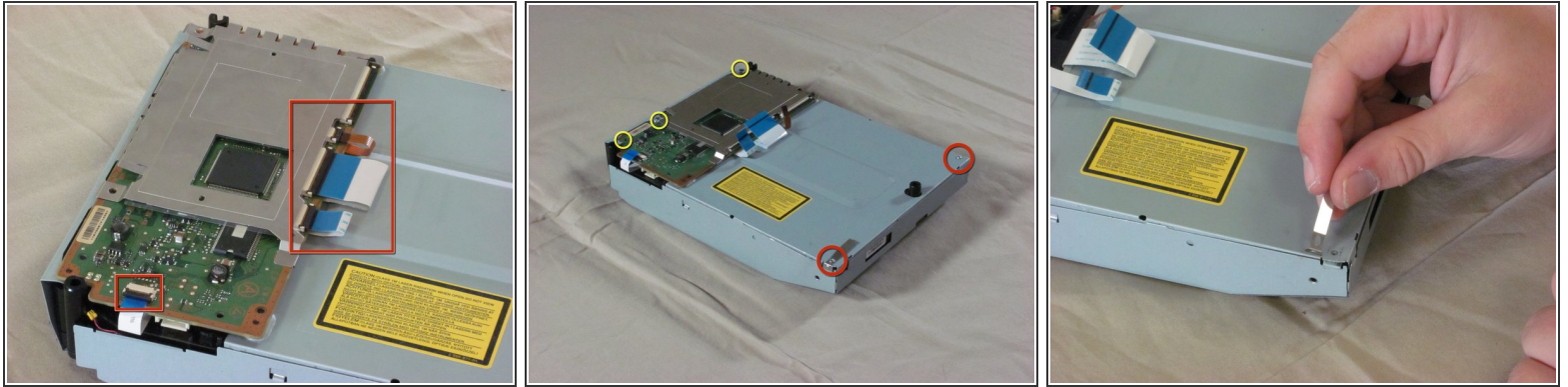
- Tilt the front of the optical drive enclosure upwards.
- Lift the black ribbon cable latch on the back side with your finger or a spudger.
- Disconnect the ribbon cable.

Step 8



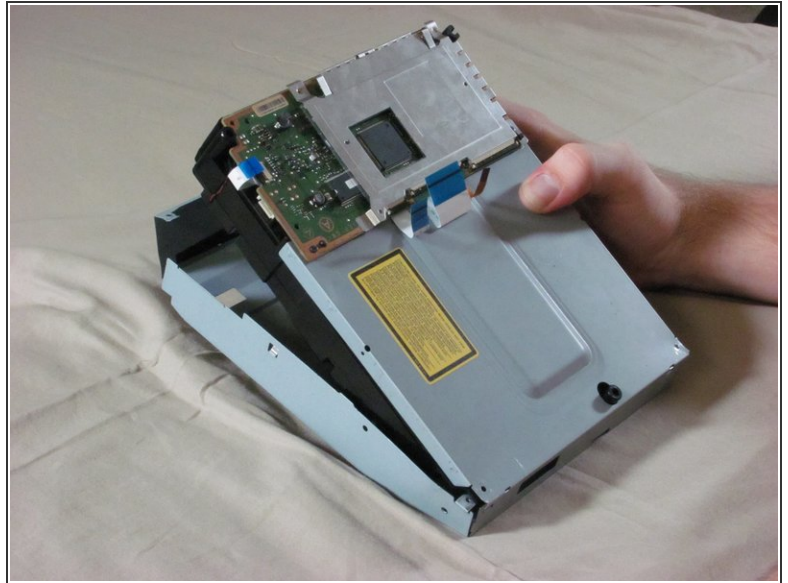
- Remove the optical drive enclosure from the PS3.

Step 9



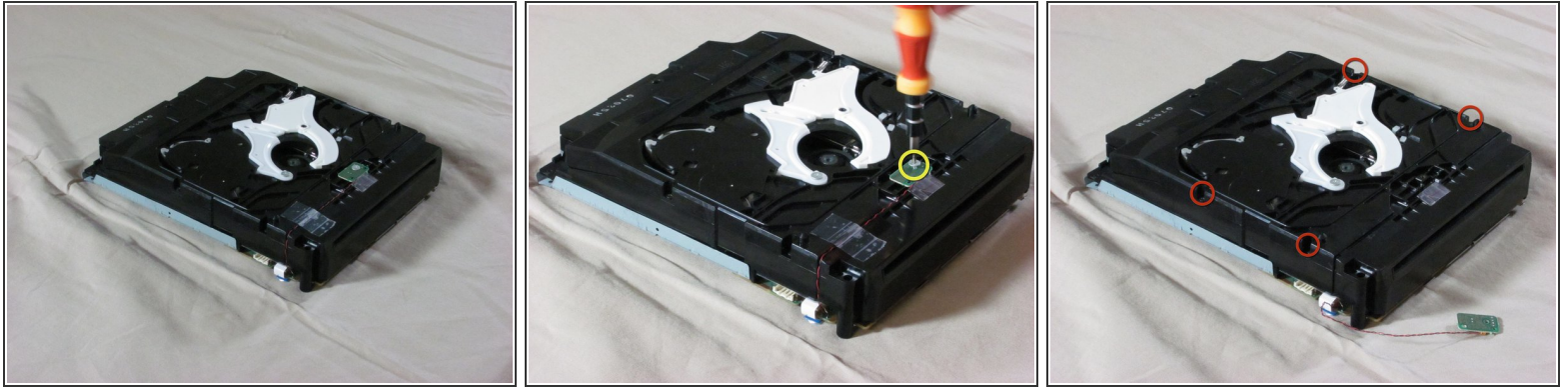
- Flip over the optical drive enclosure. There are four ribbon cables connected to the circuit board. Using a spudger or your finger, lift each ribbon cable latch and disconnect each ribbon cable.
 - Remove the three screws on the board with a Phillips #00 screwdriver.
 - Remove the two silver screws on the bottom of the case. These screws are different from the ones on the board and should be kept separate.
- ⓘ Note: The longer of these two screws holds down a metal tab that comes loose as seen in the third picture.

Step 10



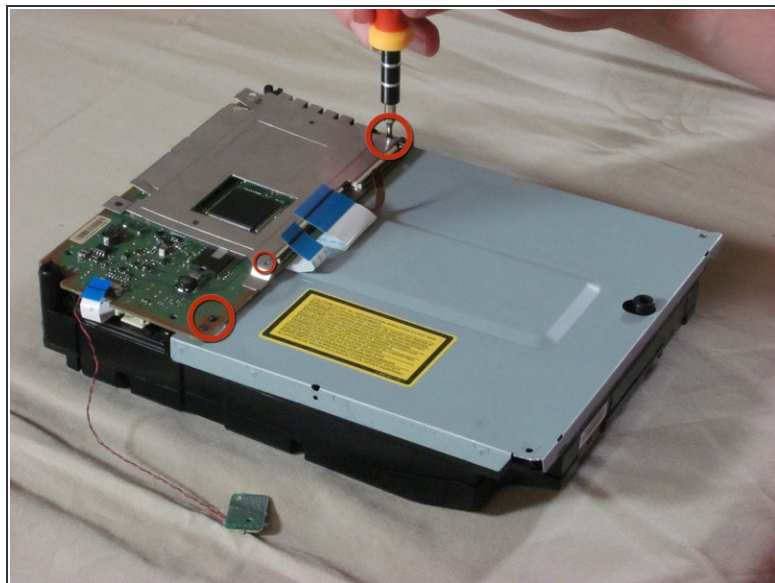
- Using your thumbs, carefully bend out the sides of the metal enclosure.
- Lift the plastic enclosure out of the metal enclosure.

Step 11



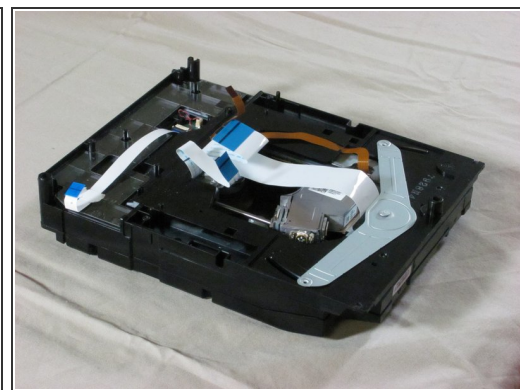
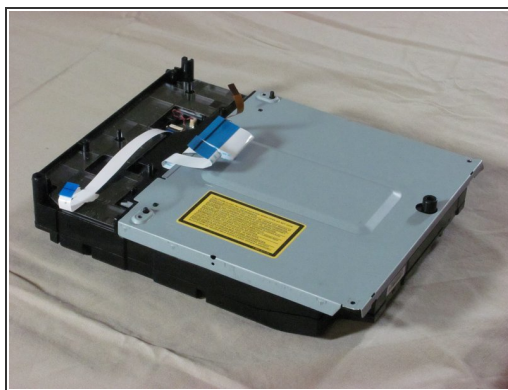
- Flip over the enclosure so that the circuit board is on the bottom and the optical sensor is on top.
- Remove the screw on the optical sensor using a Phillips #00 screwdriver.
- Remove the tape on the red and black wires that connect to the optical sensor. With the wires still attached, take the sensor off the enclosure.
 - ⚠ The wires on the optical sensor are very weak. They will break easily if excessive force is applied to them.
- Remove the four black screws on the edges of the enclosure using a Phillips #00 screwdriver.
 - ⓘ After taking out the screws, you don't have to open the enclosure just yet.

Step 12



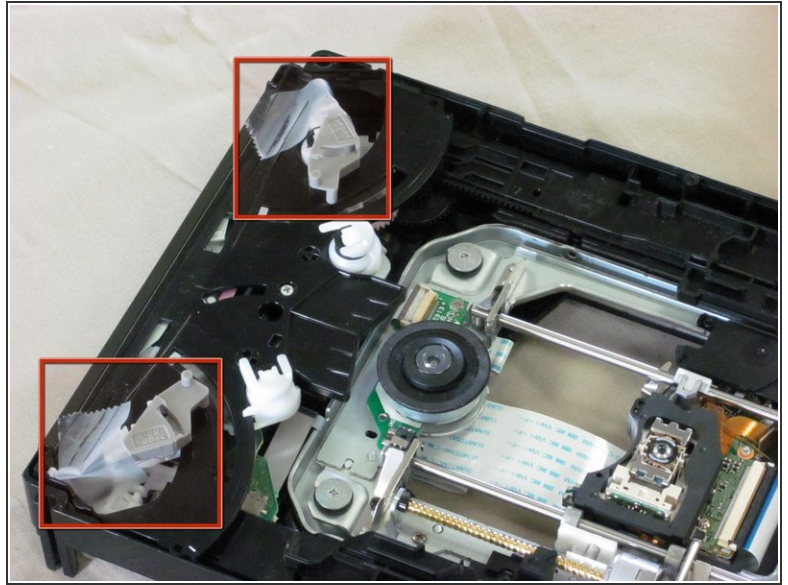
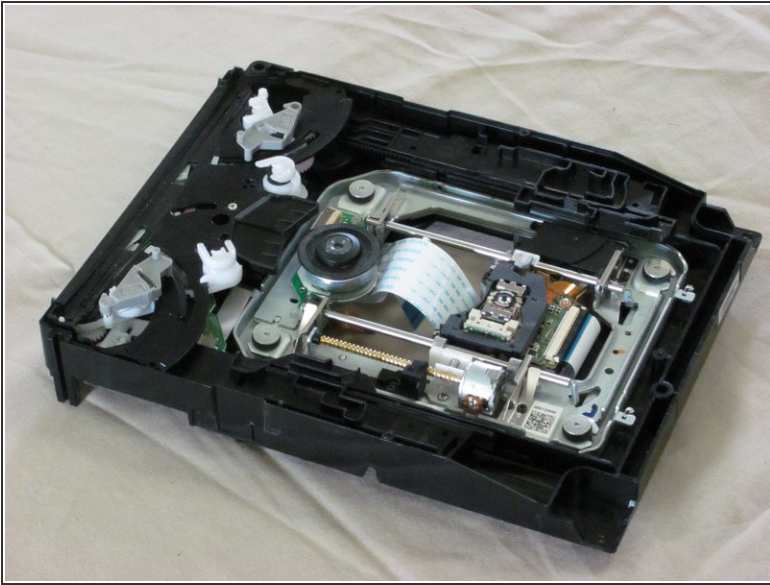
- Flip over the enclosure again.
- Remove the rest of the screws in the corners of the circuit board.

Step 13



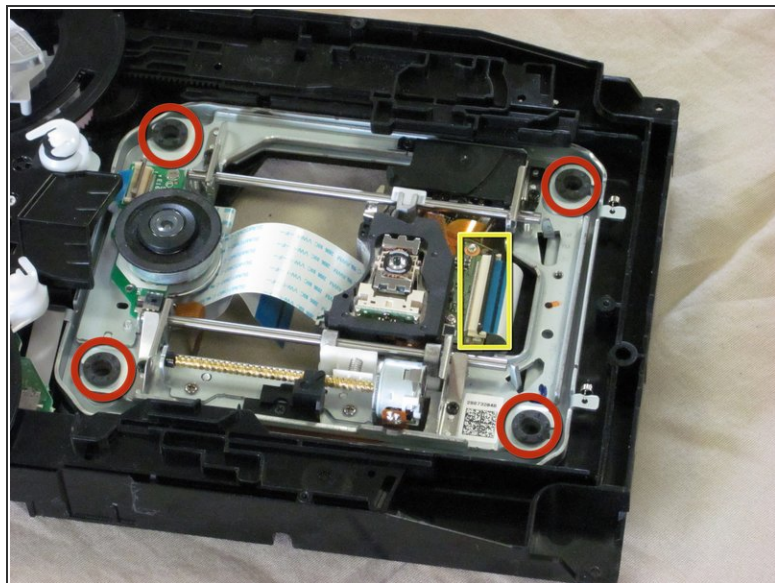
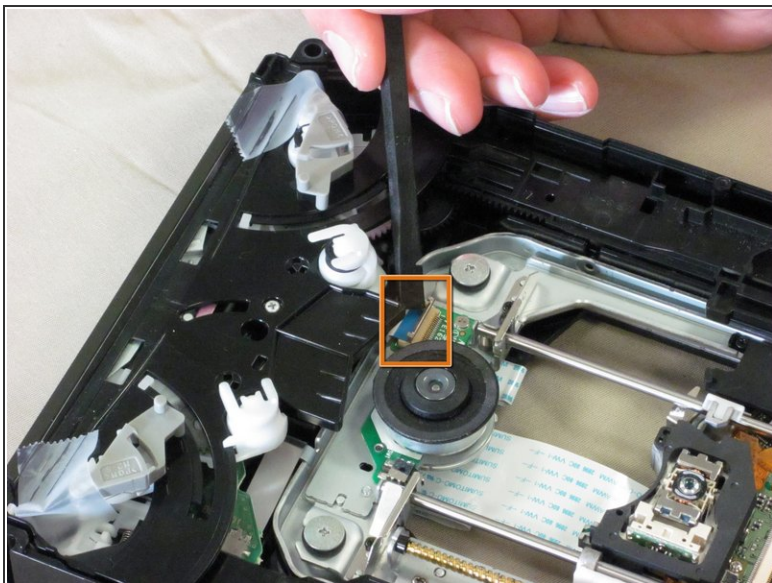
- Lift the circuit board off the enclosure.
 - ☑ The metal EM shield on the circuit board is loose, so make sure to keep it together with the circuit board.
- Remove the metal plate.

Step 14



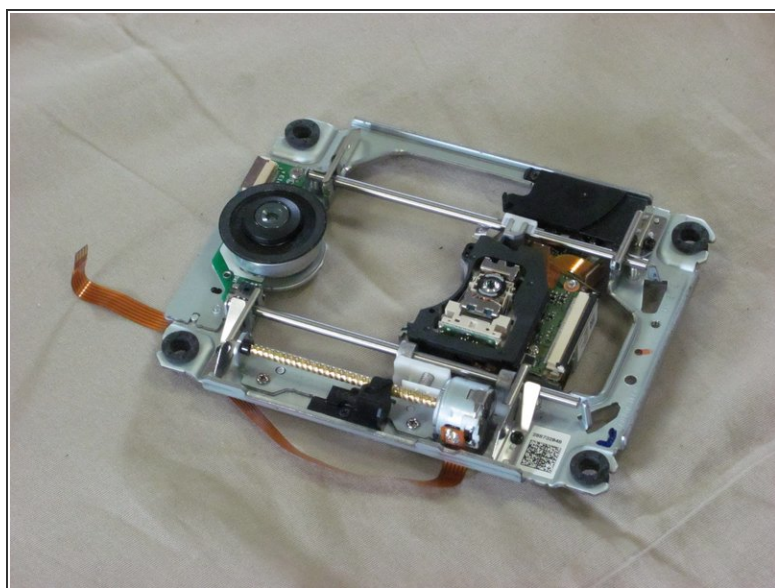
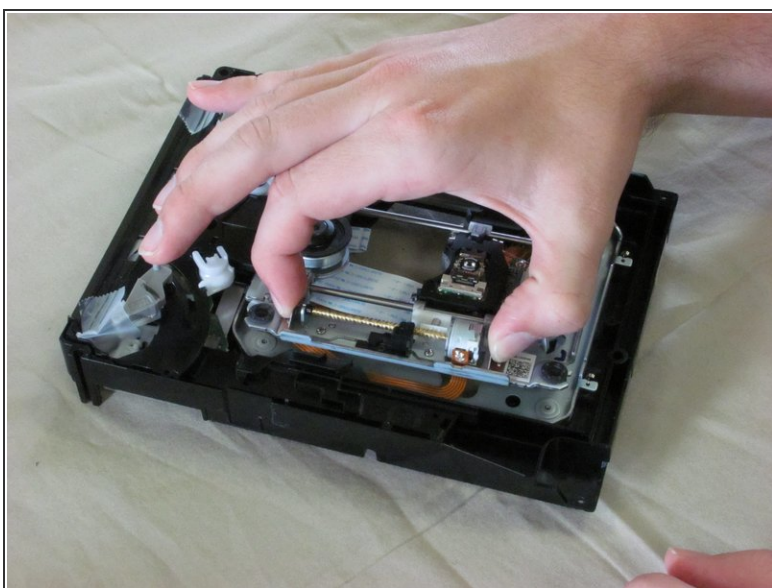
- Flip over the enclosure. Remove the black, plastic cover so that the drive and its enclosure match the first picture.
- ⚠ Proceed carefully. There are loose parts inside the optical drive. We recommend that you tape these parts.

Step 15



- Using a spudger, lift the brown latch and disconnect the small ribbon cable.
- Remove the four fat screws in the corners of the optical drive.
- Using a spudger, lift the black latch and disconnect the larger ribbon cable.

Step 16



- Carefully lift the optical drive out of the enclosure.

To reassemble your device, follow these instructions in reverse order.