



Nvidia Shield Controller Motherboard Replacement

This guide demonstrates how to replace the motherboard in the Nvidia Shield Controller.

Written By: Nate Hale



INTRODUCTION

This repair guide shows how to replace the motherboard for a Nvidia Shield Controller Gen 2, manufactured by Nvidia, item model number: 945-12920-2500-000.

The motherboard is a circuit board which connects all the components within a device. If the motherboard is faulty, the controller may not turn on at all.



TOOLS:

- [iFixit Opening Tool](#) (1)
 - [Tweezers](#) (1)
 - [TR6 Torx Security Screwdriver](#) (1)
 - [T5 Torx Screwdriver](#) (1)
-

Step 1 — Motherboard



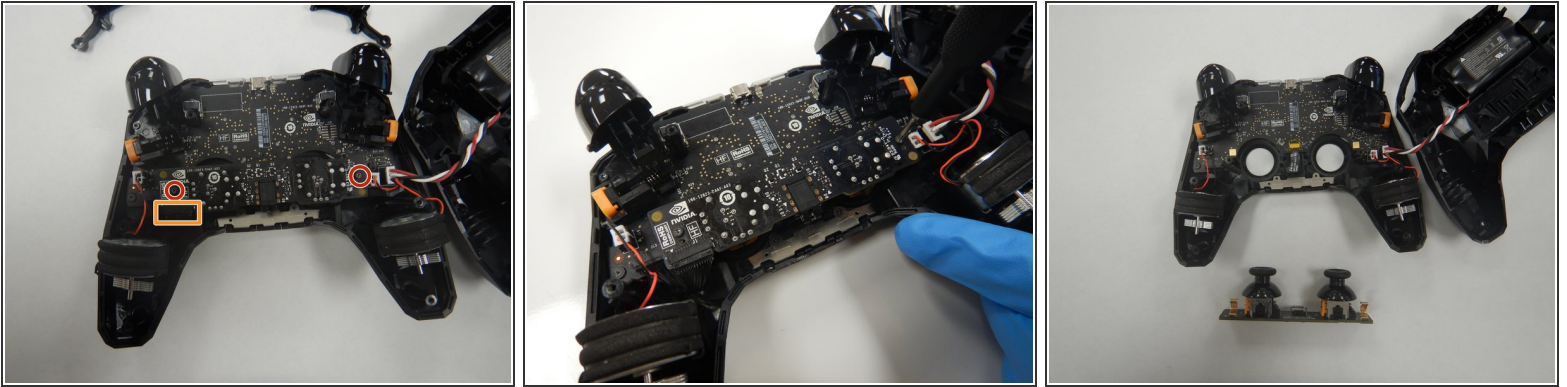
- Use a Torx TR6 screwdriver to remove the six 7mm screws from the back of the controller.

Step 2



- Use a plastic opening tool to pry open the back frame of the controller.

Step 3



- Use the Torx TR6 bit to remove the two 7mm screws behind the analog sticks.
- Unplug the power supply cable from the analog stick assembly.

Step 4



- Use a pair of tweezers to unplug the rumble motors from the motherboard.
- Use a pair of tweezers to unplug the battery cable from the motherboard.

Step 5



- Use a Torx TR6 screwdriver to remove the two 7mm screws towards the top of the frame.
- Use the Torx T5 screwdriver to remove the two 5mm screws in the bottom corners of the frame.
- Lift out the motherboard from the case.

To reassemble your device, follow these instructions in reverse order.