



Black and Decker Pivot MAX Power Switch Replacement

How to replace a power switch in the Black and Decker Pivot MAX.

Written By: Avery Hanulcik



INTRODUCTION

The power switch on the Black and Decker Pivot MAX turns the appliance on when connected to power. If your Black and Decker Pivot MAX will not turn on, is stuck on, or has a finicky power switch, replacing this component is something you should consider.

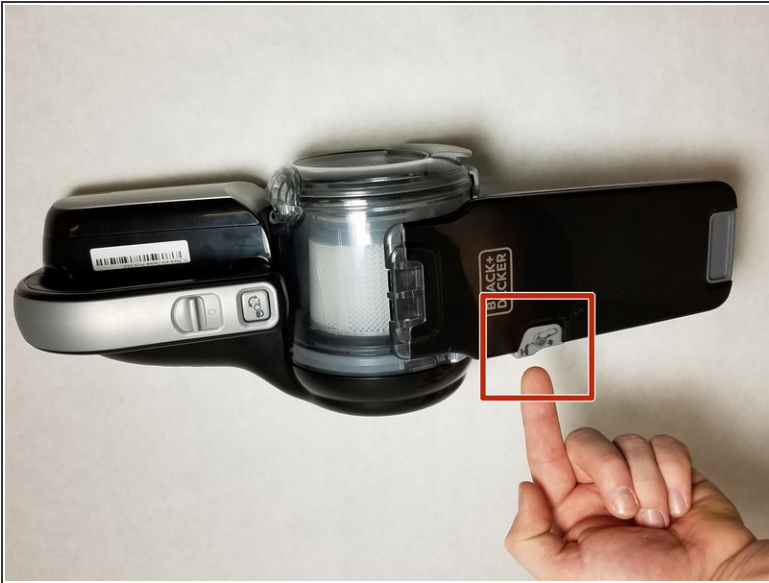
This guide will take you through the steps of removing and re-assembling key components of the Black and Decker Pivot MAX to allow you to replace the power switch. Tools you will need for this project will be a Phillips head screwdriver and a soldering iron.



TOOLS:

- [Phillips #1 Screwdriver](#) (1)
 - [Soldering Workstation](#) (1)
 - [Lead-Free Solder](#) (1)
-

Step 1 — Battery



- Press in and hold the release button.
- Rotate the dust filter chamber counter-clockwise.
- Remove the dust filter chamber.

Step 2



- Remove the two 10 mm screws from the motor casing with a Phillips #1 screwdriver.

Step 3



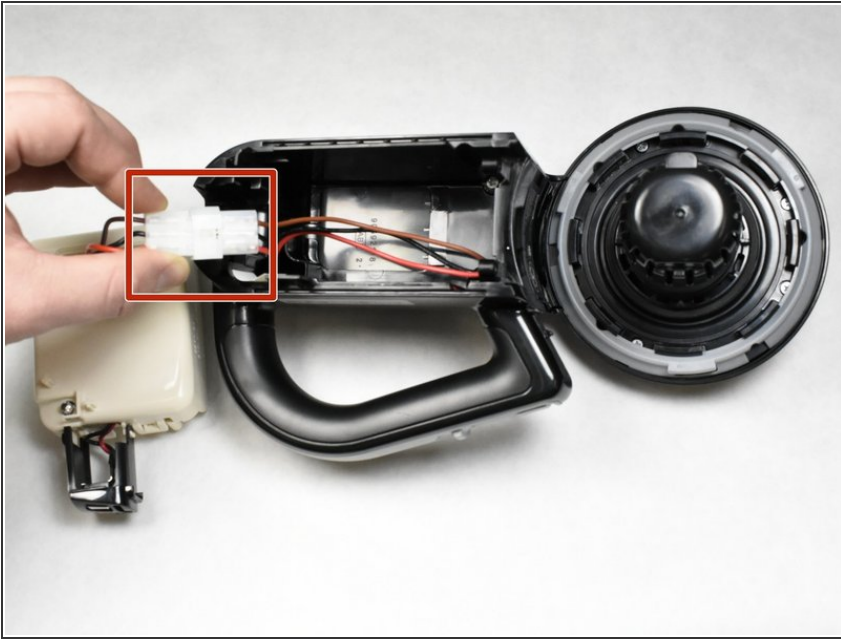
- Pull the battery cover up and then slide it away from the motor to remove.

Step 4



- Remove the battery unit by pulling it out of the main body.

Step 5



- Disconnect the quick connect wire harness that connects the motor and battery located in the battery storage compartment.

Step 6 — Pivot Lock Button



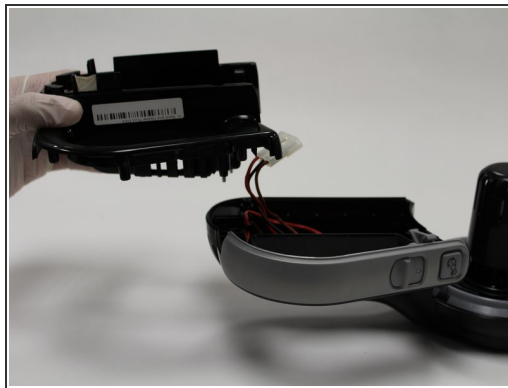
- Remove the handle cover by removing the three PH1 20mm screws

Step 7



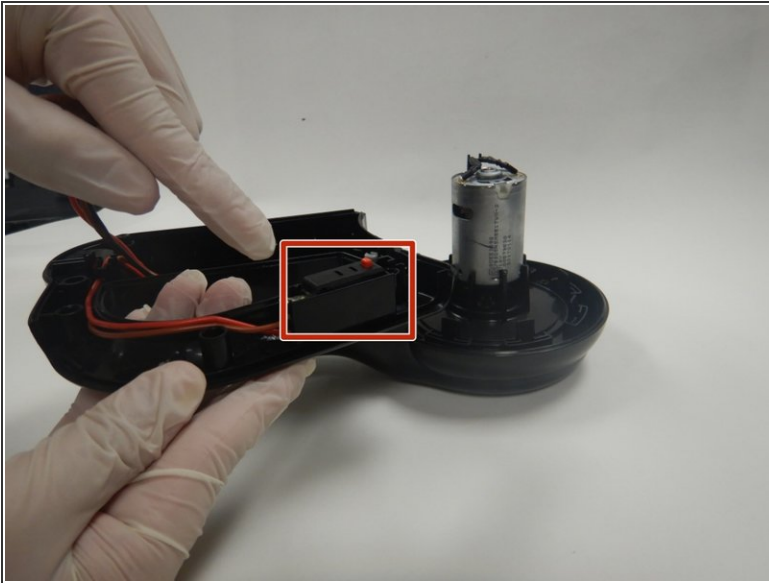
- Pull out the pivot lock button.

Step 8 — Power Switch



- Lift the battery tray after removing the screws
- Remove the handle parts from the handle area.

Step 9



- Pull the power switch out softly.
- Desolder the wires from the old power switch to the new one.
- ① Check out our [How To Solder and Desolder Connections](#) guide if you need any help!

To reassemble your device, follow these instructions in reverse order.