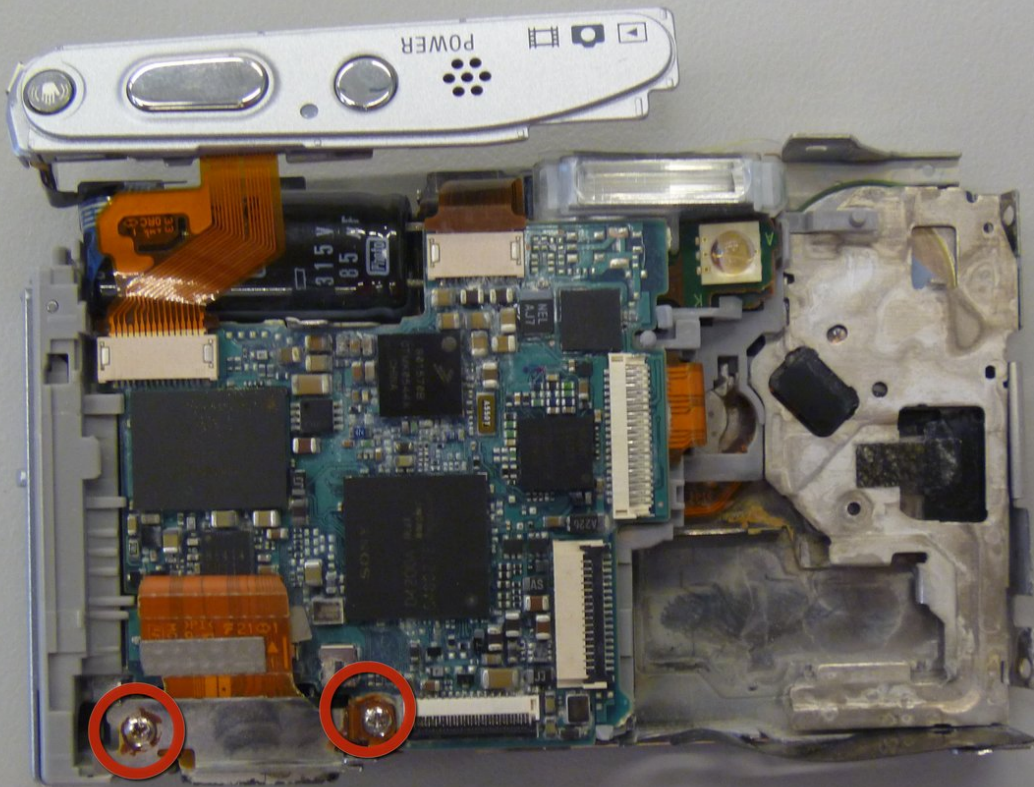




Sony Cyber-shot DSC-T9 AV Port Replacement

This guide provides instructions on how to install an AV port on to the Sony Cyber-shot DSC-T9 camera.

Written By: Stephannie Allen



INTRODUCTION

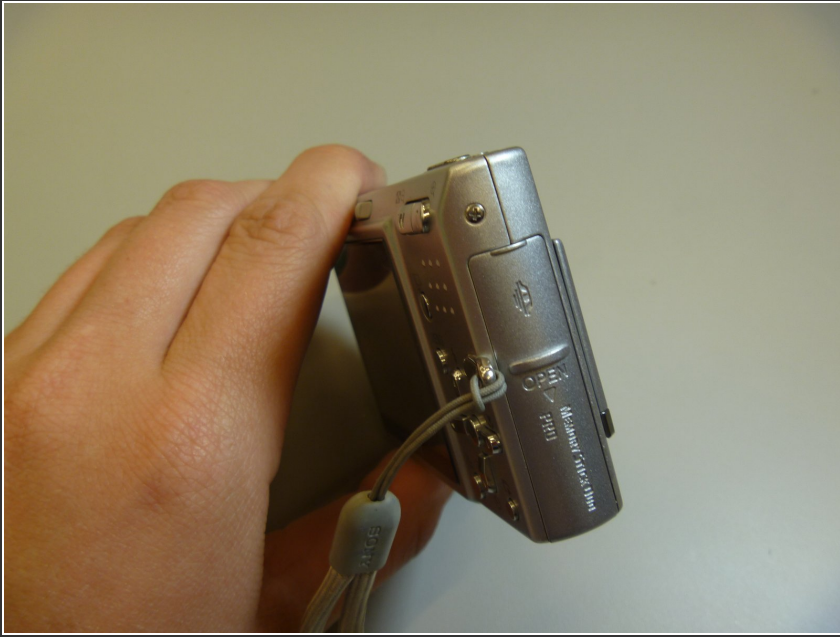
This guide will teach the user how to disassemble and access the AV port for replacement or installation.



TOOLS:

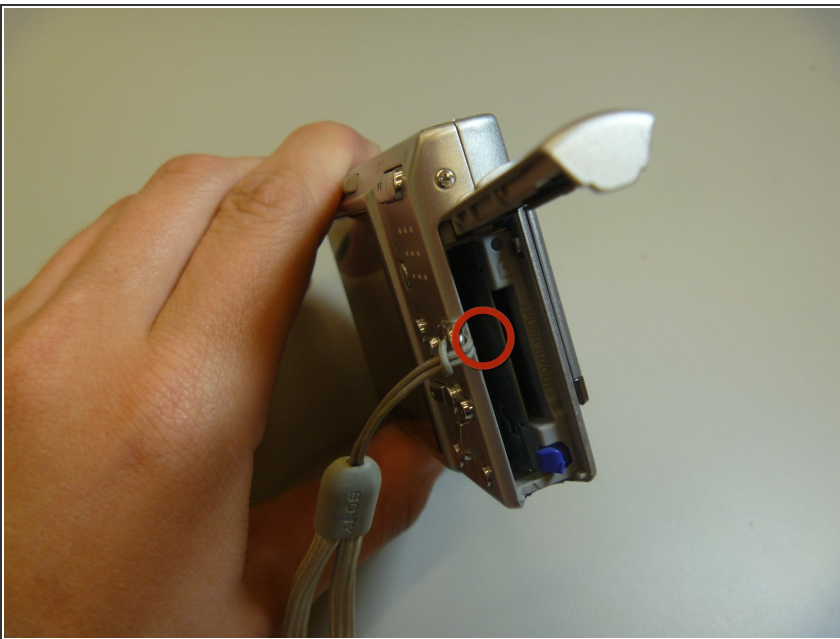
- [Phillips #00 Screwdriver](#) (1)
 - [Spudger](#) (1)
 - [Tweezers](#) (1)
 - [iFixit Opening Tools](#) (1)
-

Step 1 — Battery



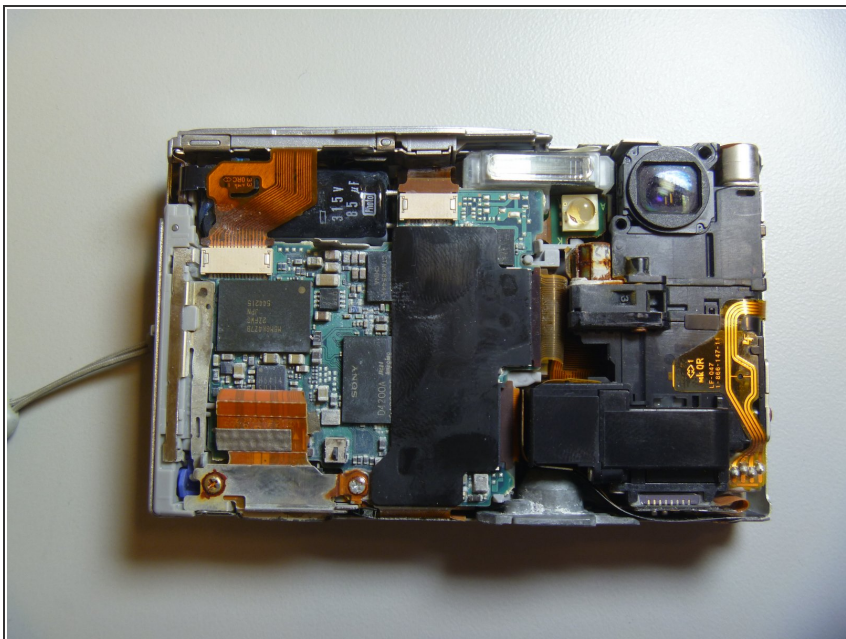
- The battery cover is located on the right side of the camera.
- Slide the cover to expose the battery.

Step 2



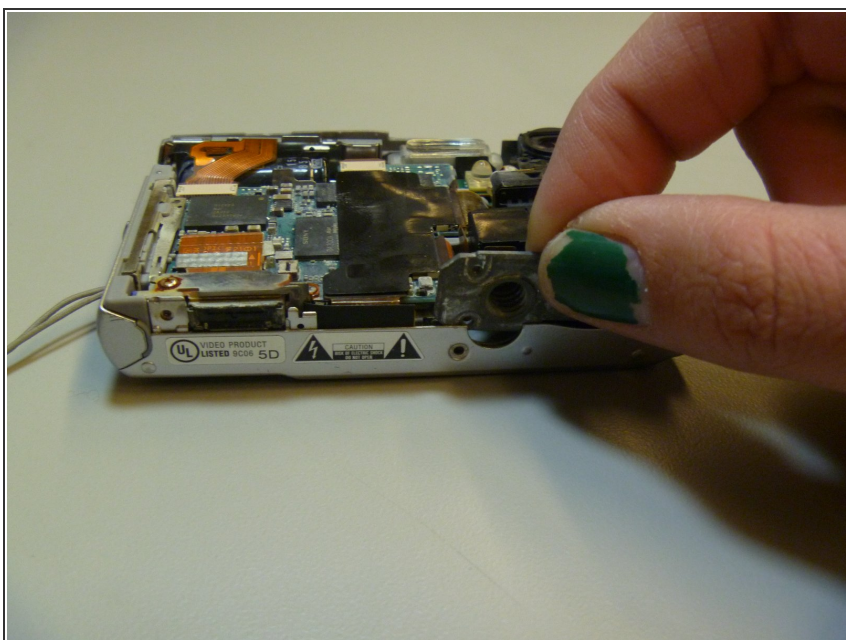
- Ensure that the battery lines up properly with the slot in the camera.
- Slide battery in.
- Slide cover closed.
- ⓘ Battery not shown

Step 3 — Back Cover



- This is the camera without the front cover.

Step 4



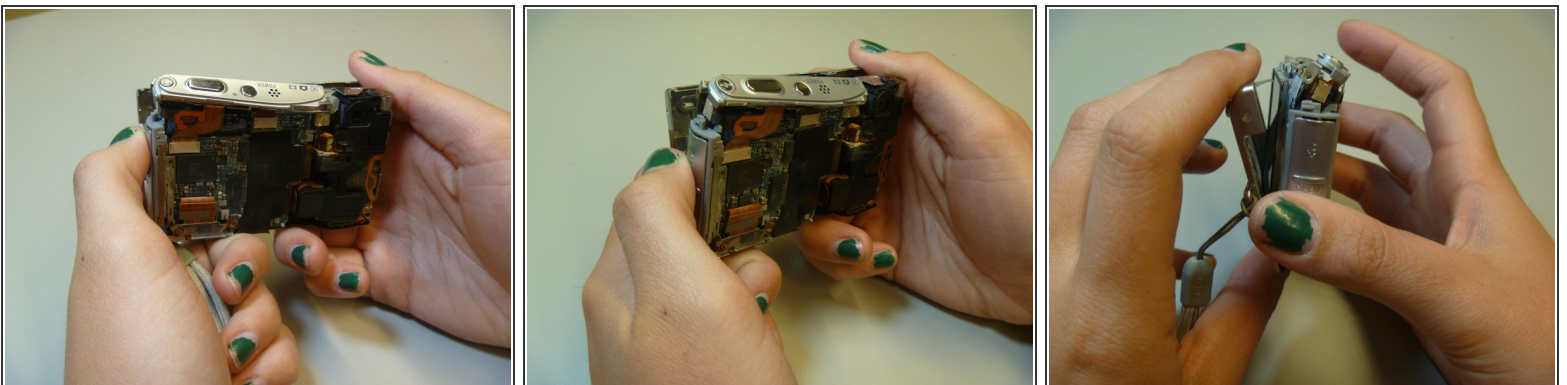
- Remove tripod piece located at the bottom of the camera. This piece should slide out with ease.

Step 5



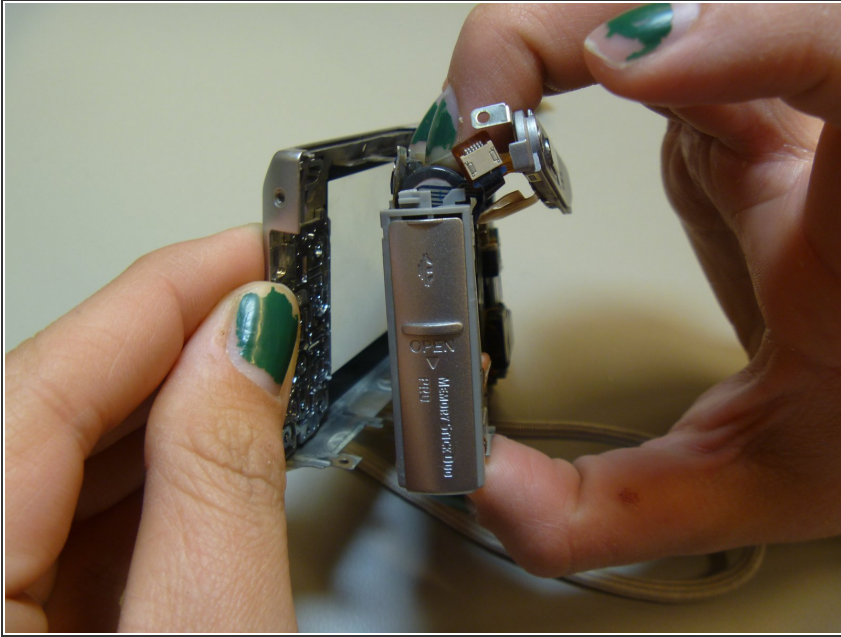
- Slide open the top panel. This is located on the top of the camera, where the power button and shutter button are.

Step 6



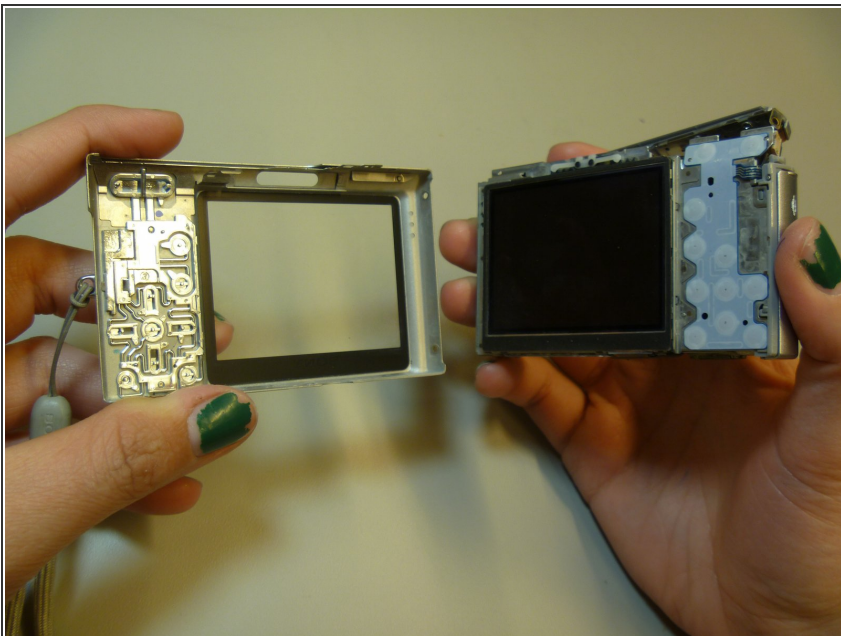
- Pull apart the inner hardware from the back case by prying on the left side.

Step 7



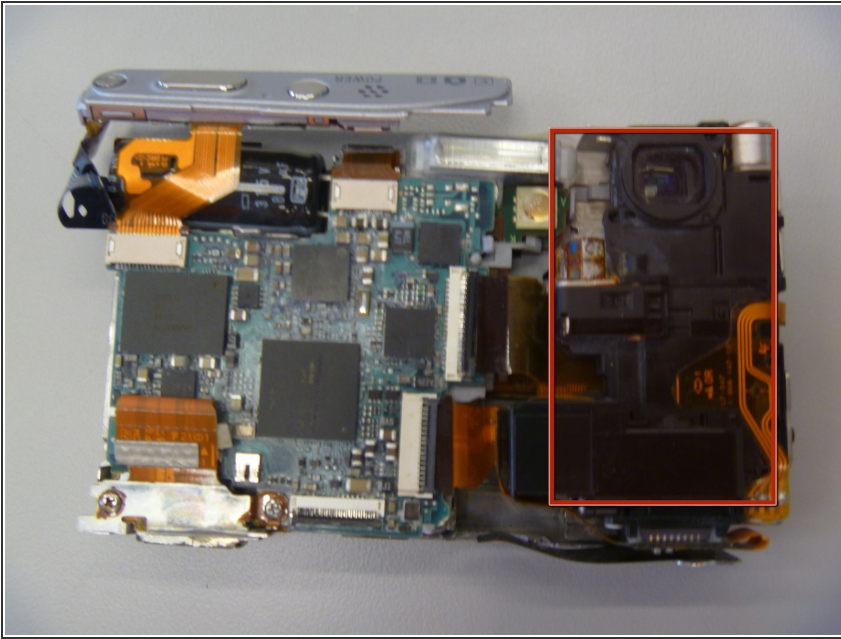
- Remove the back cover.

Step 8



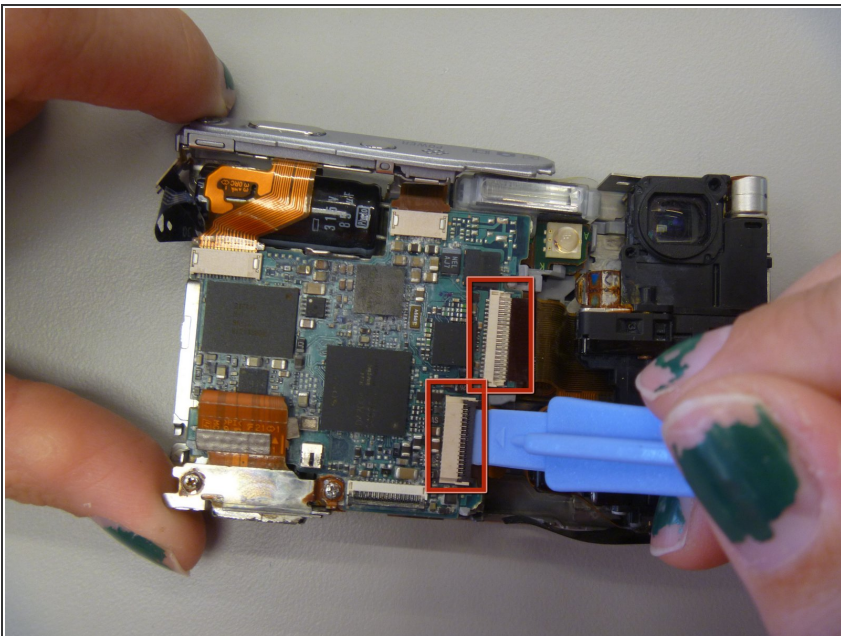
- The back cover is now removed from the internal hardware.

Step 9 — CCD Module



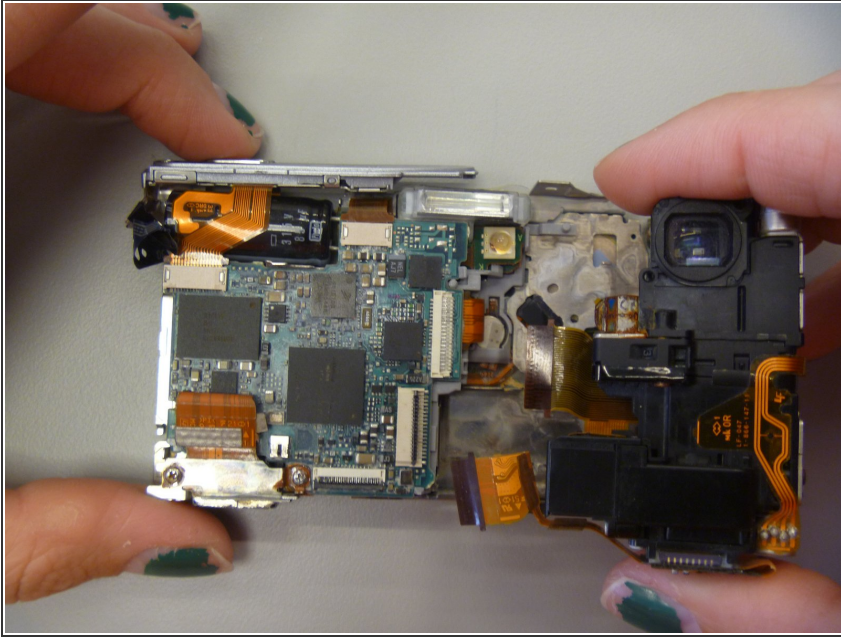
- This is the CCD module.

Step 10



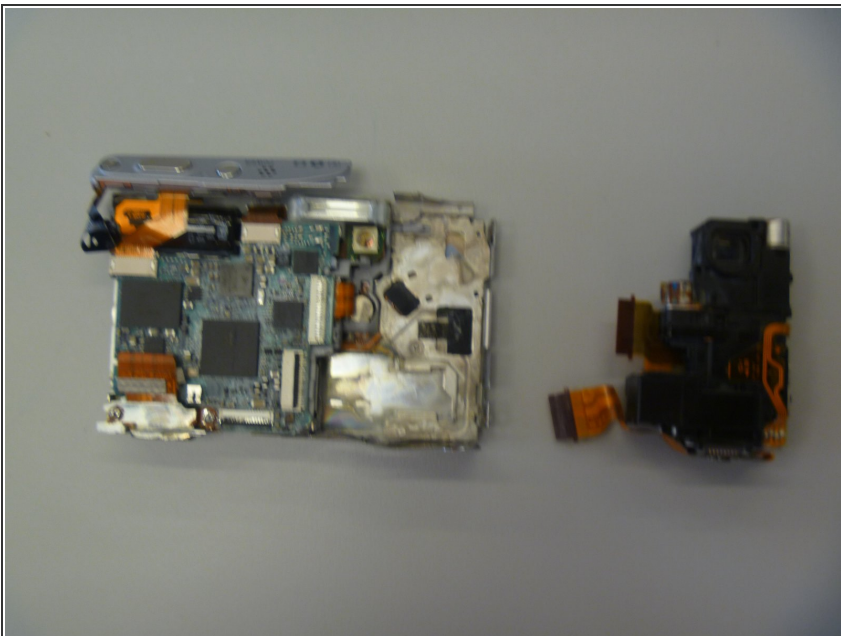
- Use plastic opening tool pop open the two ribbons attaching to the CCD module.
- These are the two ribbons.

Step 11



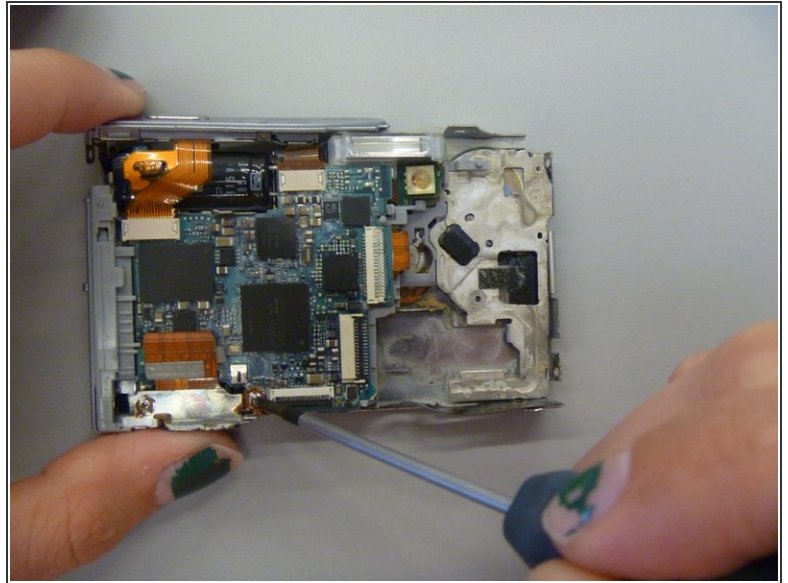
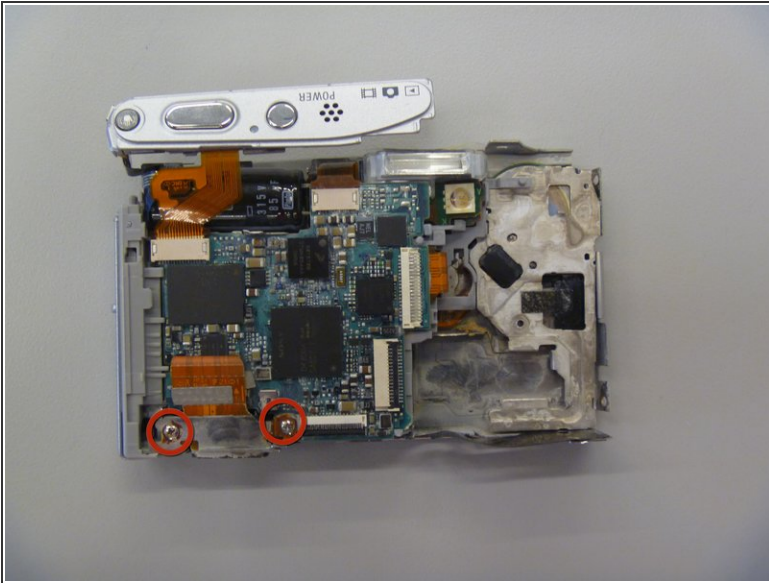
- Remove CCD module.
- ① You may have to tug on the ribbons to remove the CCD module.

Step 12



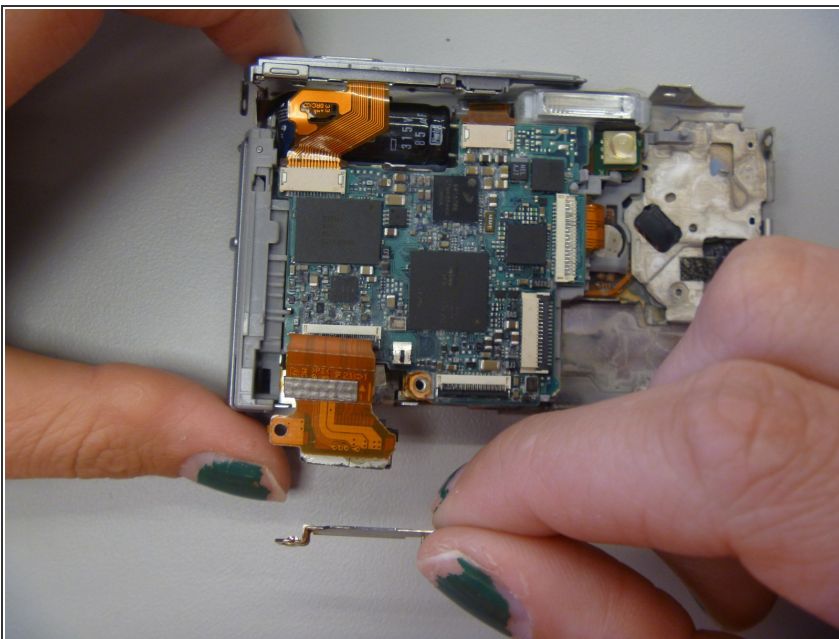
- The CCD module is now removed from the camera.

Step 13 — AV Port



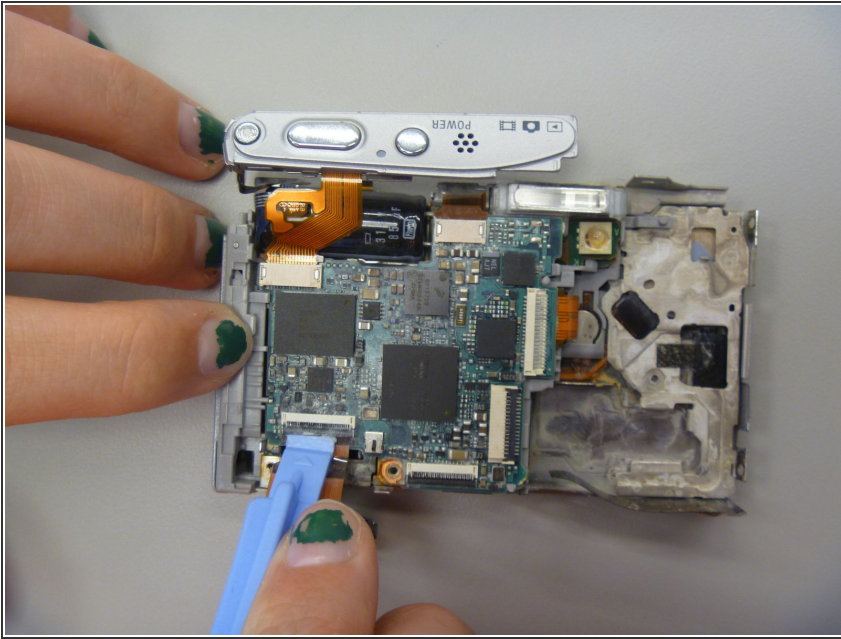
- These two screws hold in the AV port.
- Use Phillips screwdriver to remove screws.

Step 14



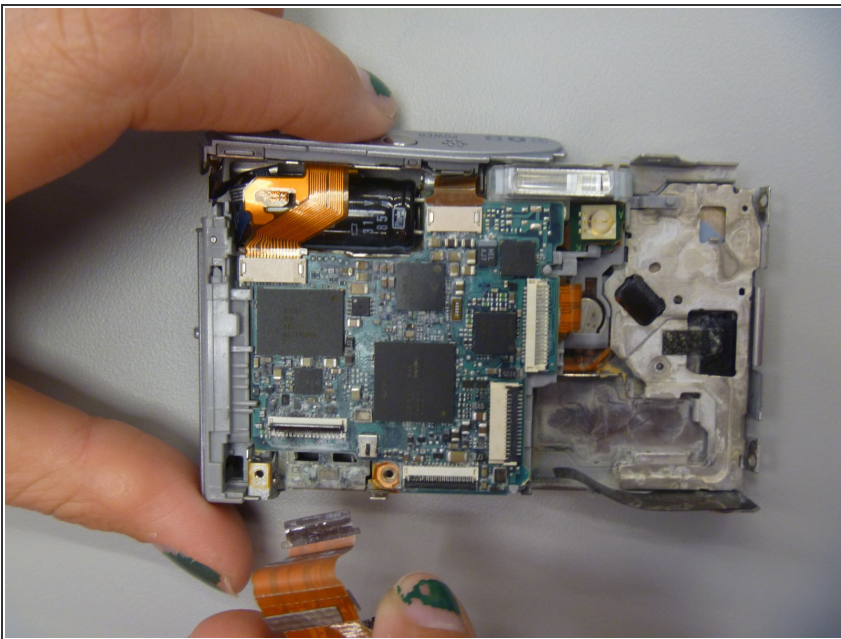
- Remove metal screw plate.

Step 15



- Use pry stick to pop off ribbon.

Step 16



- Remove AV port from camera.

To reassemble your device, follow these instructions in reverse order.