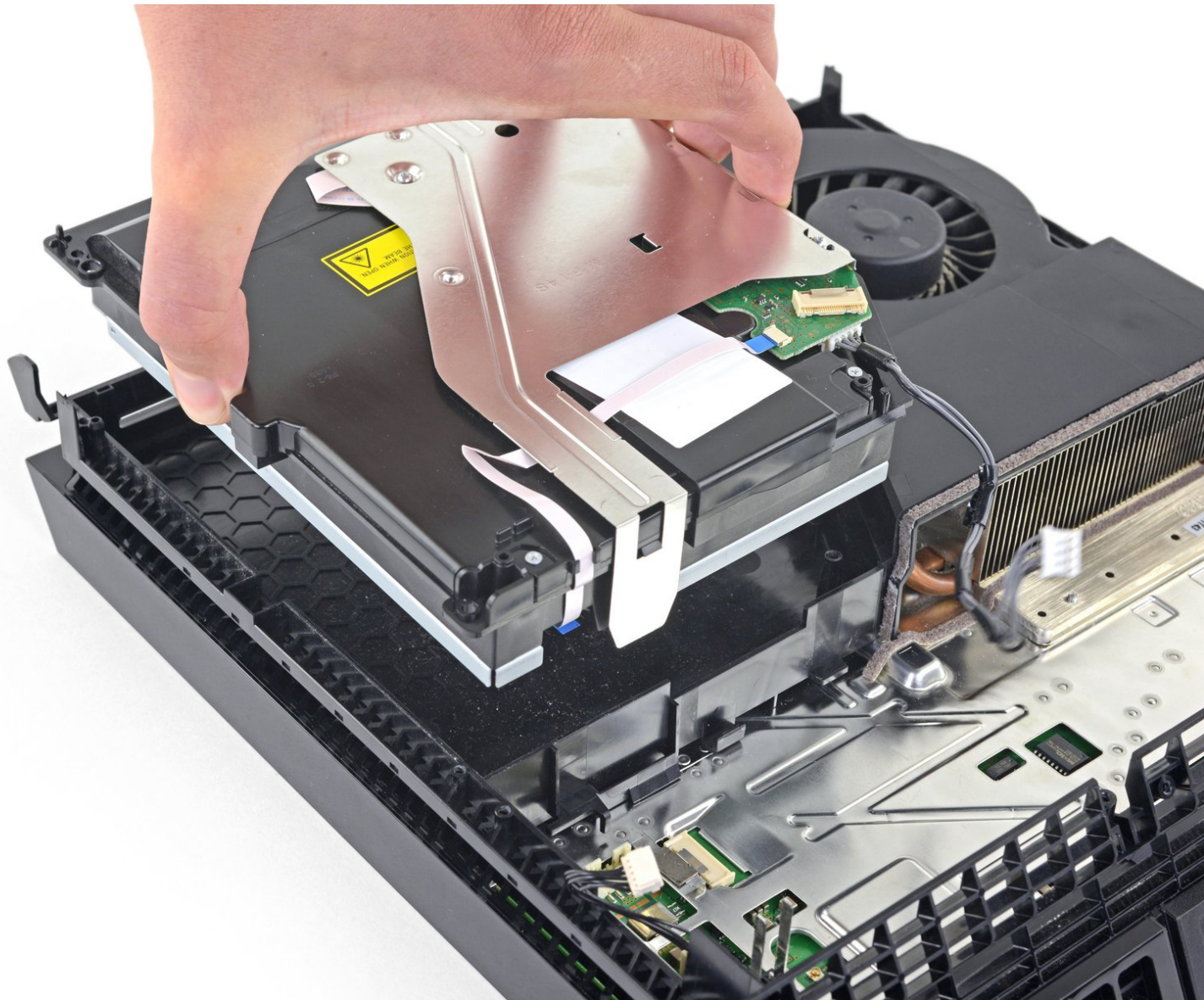




Optical Drive Removal

How to remove the optical drive on a Sony Playstation 4.

Written By: Sam Omiotek



INTRODUCTION

This is a prerequisite-only guide! This guide is part of another procedure and is not meant to be used alone.



TOOLS:

- [TR8 Torx Security Screwdriver](#) (1)
 - [Phillips #0 Screwdriver](#) (1)
 - [Tweezers](#) (1)
 - [Spudger](#) (1)
-

Step 1 — Flip over the PS4



- Flip the PS4 upside-down with the back side facing towards you.

Step 2 — Remove the warranty stickers



- Use tweezers to remove the two stickers in the center of the back of the PS4 exposing two case screws.

Step 3 — Remove the plastic screw covers



- Use tweezers to carefully remove the plastic screw covers in each corner, exposing two more case screws.

Step 4 — Remove the rear case screws



- Remove the four 7.2 mm Torx security screws on the back of the PS4.

Step 5 — Remove the lower case



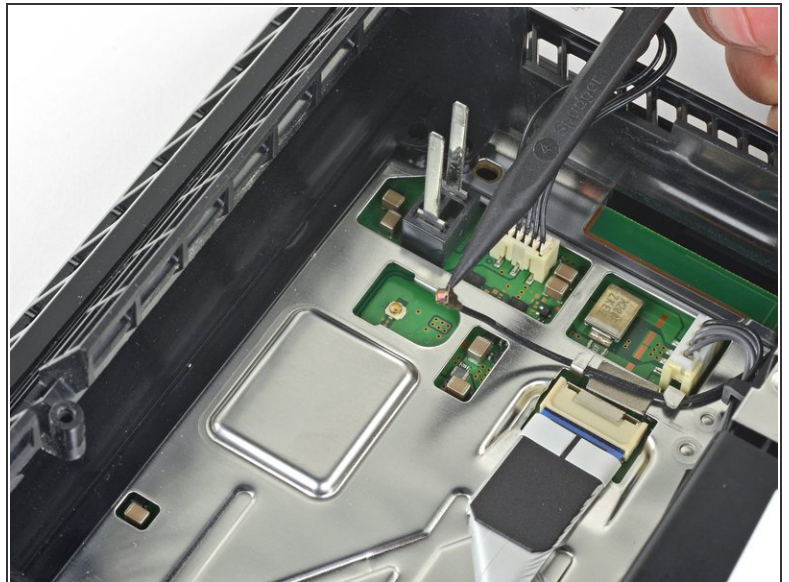
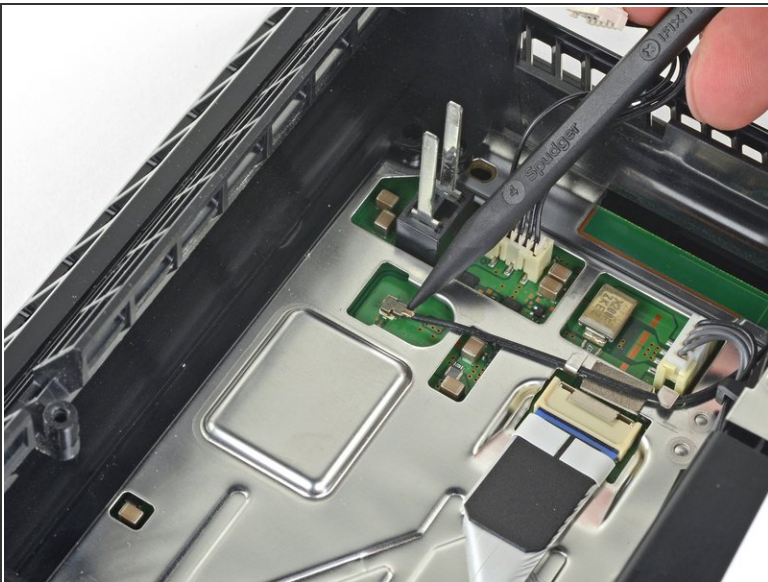
- Use your thumbs to lift the lower case up and off the PS4.
- ⓘ The lower case is held into place by plastic clips. You may need to use significant force to release the lower case.

Step 6



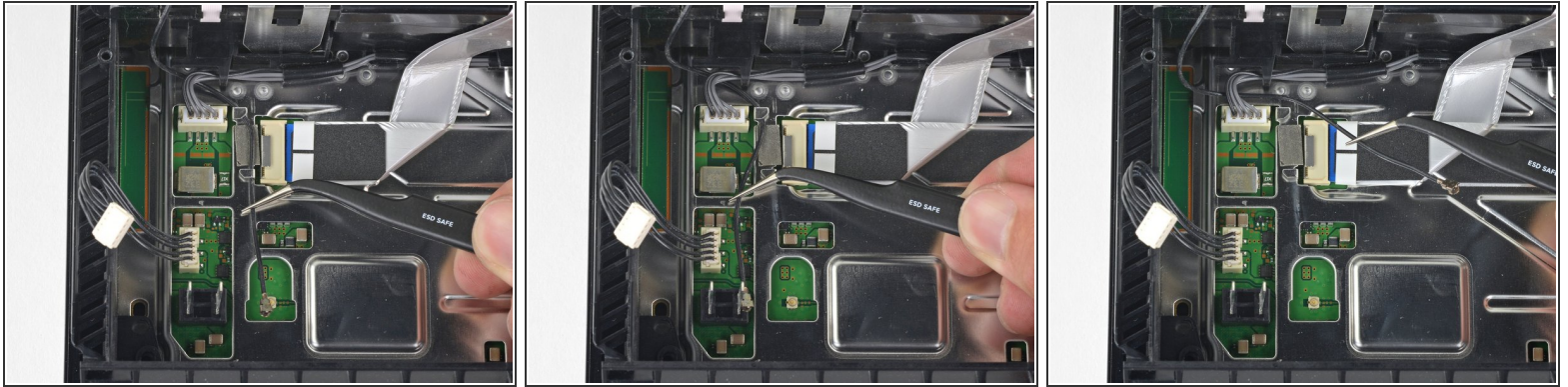
- Use a pair of tweezers to pull the power supply cable straight out and disconnect the power supply unit from the motherboard.
- ❗ If your connector feels stuck, use a spudger to gently pry the connector out.

Step 7 — Remove the Wi-Fi antenna



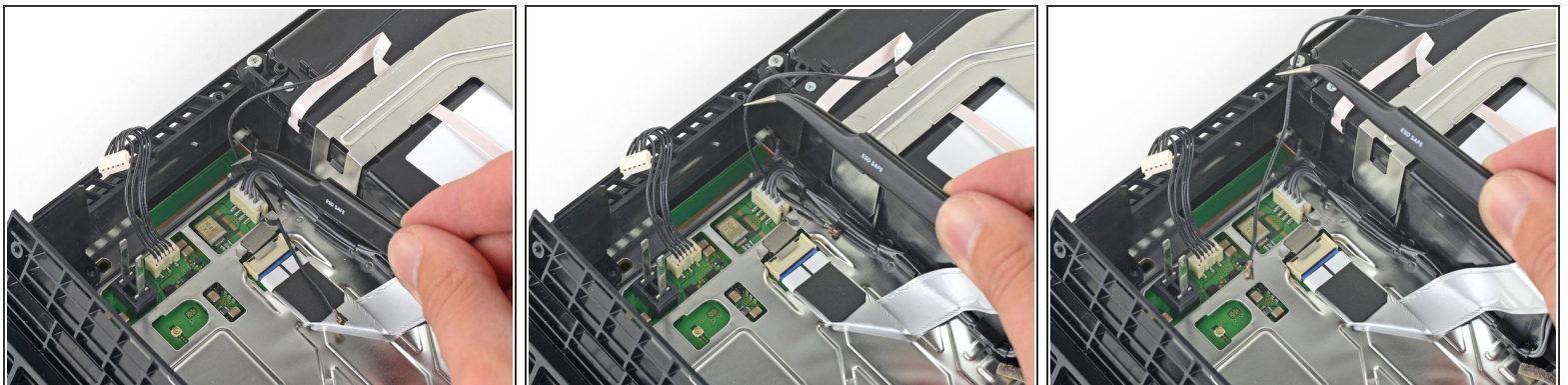
- Use the tip of a spudger to disconnect the antenna cable from the motherboard.

Step 8



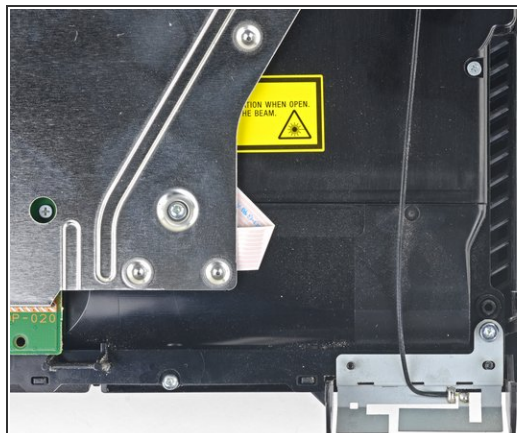
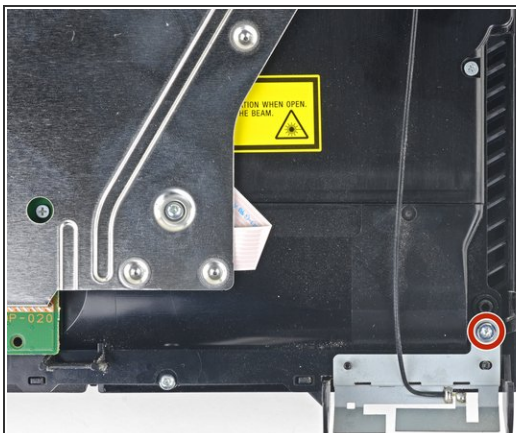
- Use a pair of tweezers or your fingers to grab the antenna cable and move it out from the cable guides.

Step 9



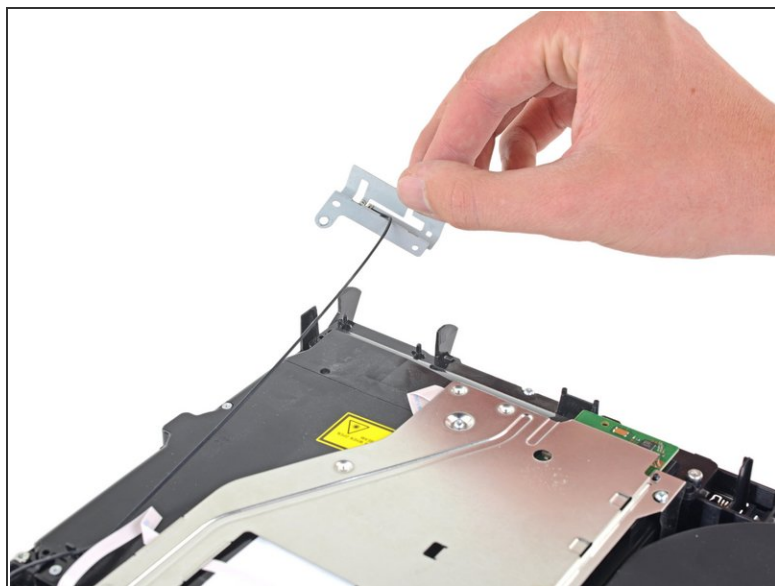
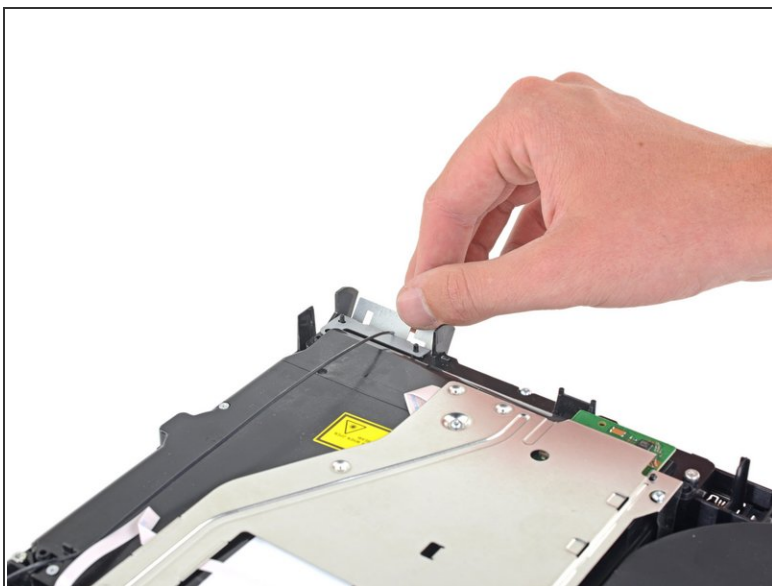
- Use a pair of tweezers or your fingers to thread the antenna cable out from underneath the optical drive cable.

Step 10



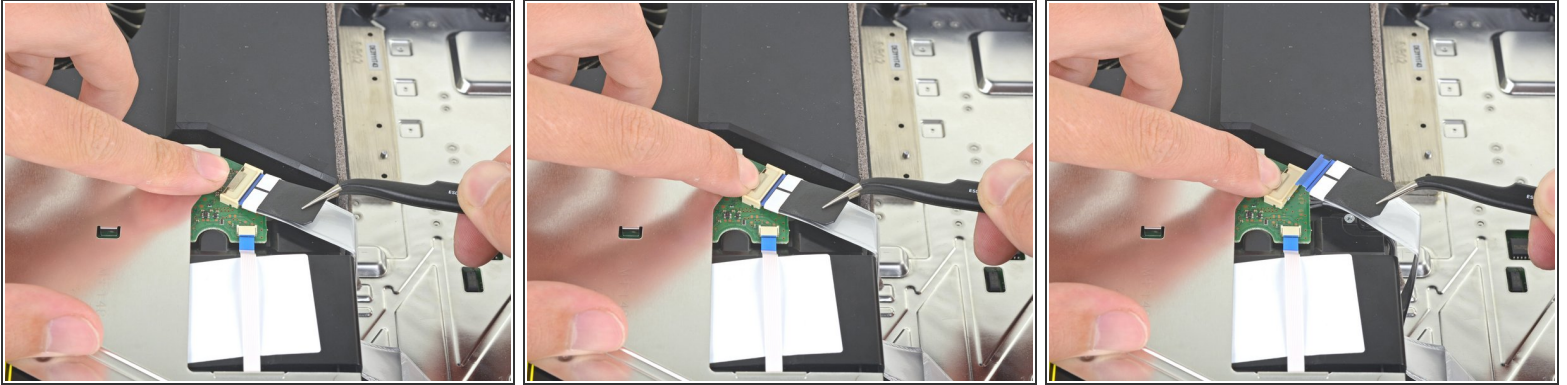
- Remove the 9.7 mm Torx security screw securing the antenna.

Step 11



- Remove the Wi-Fi antenna.

Step 12 — Disconnect the optical drive



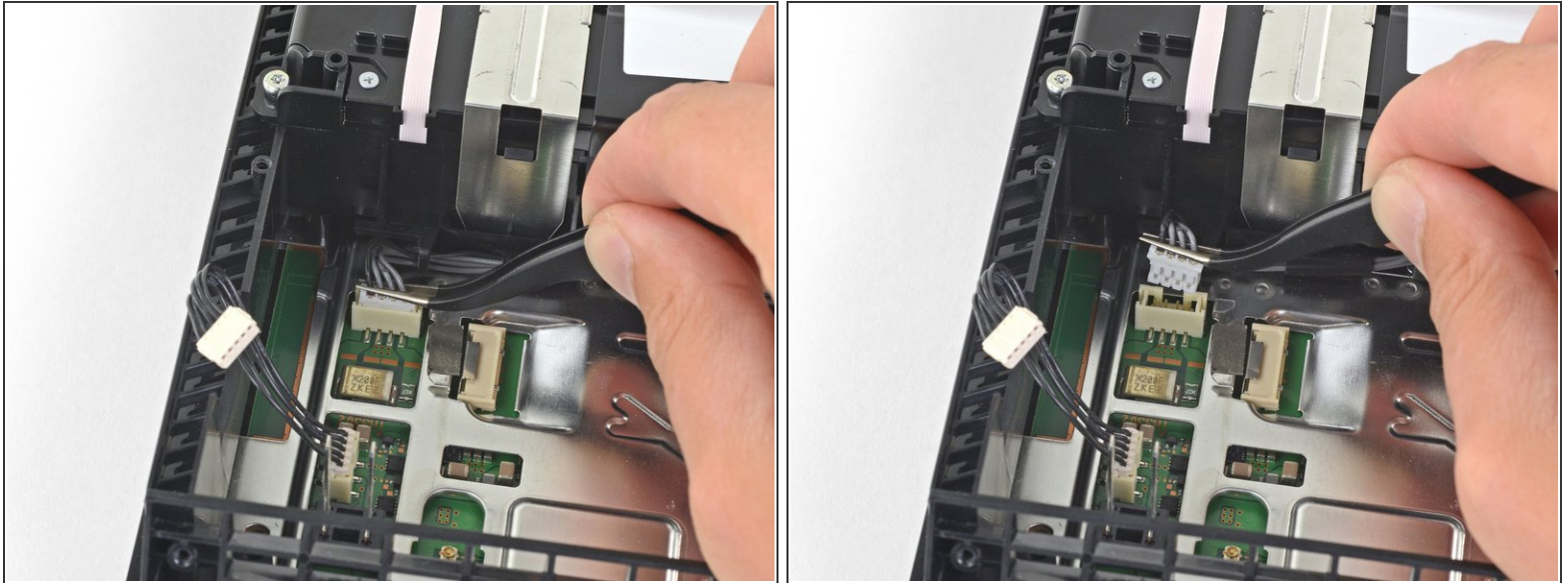
- Use your fingernail to press down on the metal release lever of the ribbon cable on top of the optical drive.
 - Use your fingers or a pair of tweezers to disconnect the ribbon cable by pulling on the black tab.
- ☒ You do not need to press the metal lever when inserting the ribbon cable back in. You will hear a click once it is fully inserted.

Step 13



- Use your fingernail to press down the metal release lever for the ribbon cable connected to the motherboard.
 - Use your fingers or a pair of tweezers to disconnect the ribbon cable by pulling on the black tab.
 - Set the ribbon cable aside for reassembly.
- ☒ You do not need to press the metal lever when inserting the ribbon cable back in. You will hear a click once it is fully inserted.

Step 14



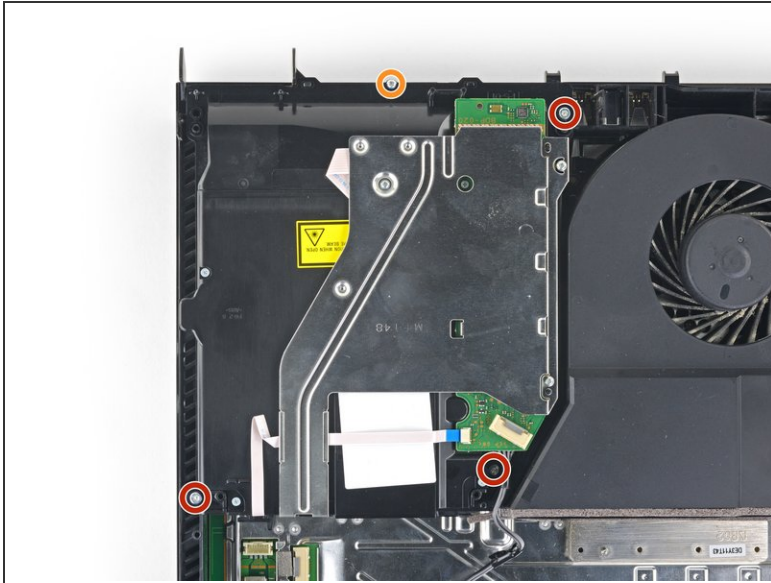
- Use your fingers or a pair of tweezers to disconnect the optical drive cable from the motherboard.

Step 15



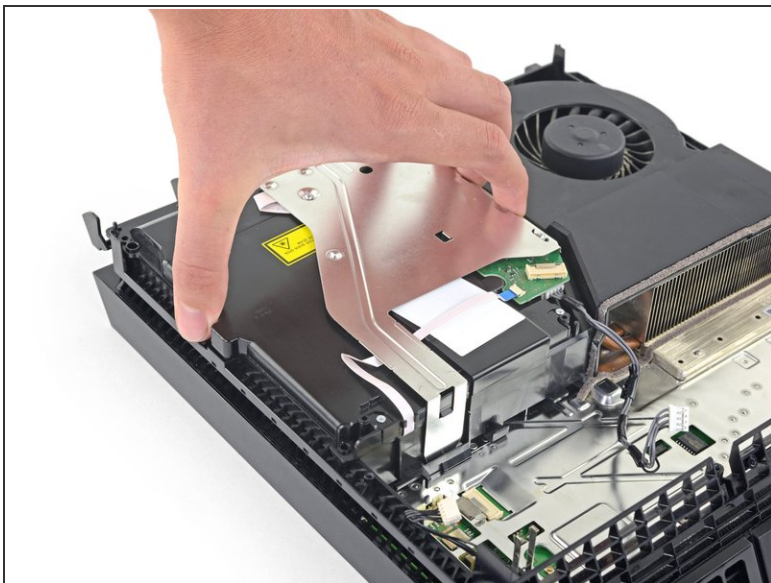
- Use your fingers or a pair of tweezers to remove the optical drive cable from the cable guides that hold it in place.

Step 16 — Remove the optical drive



- Remove the four screws securing the optical drive.
 - Three 9.7 mm Torx screws
 - One 6.2 mm Phillips screw

Step 17



- Lift the optical drive straight up and out of the PS4.

To reassemble your device, follow the above steps in reverse order.

Take your e-waste to an [R2 or e-Stewards certified recycler](#).

Repair didn't go as planned? Check out our [Answers community](#) for troubleshooting help.

Compare your new replacement part to the original part—you may need to transfer remaining components or remove adhesive backings from the new part before installing.