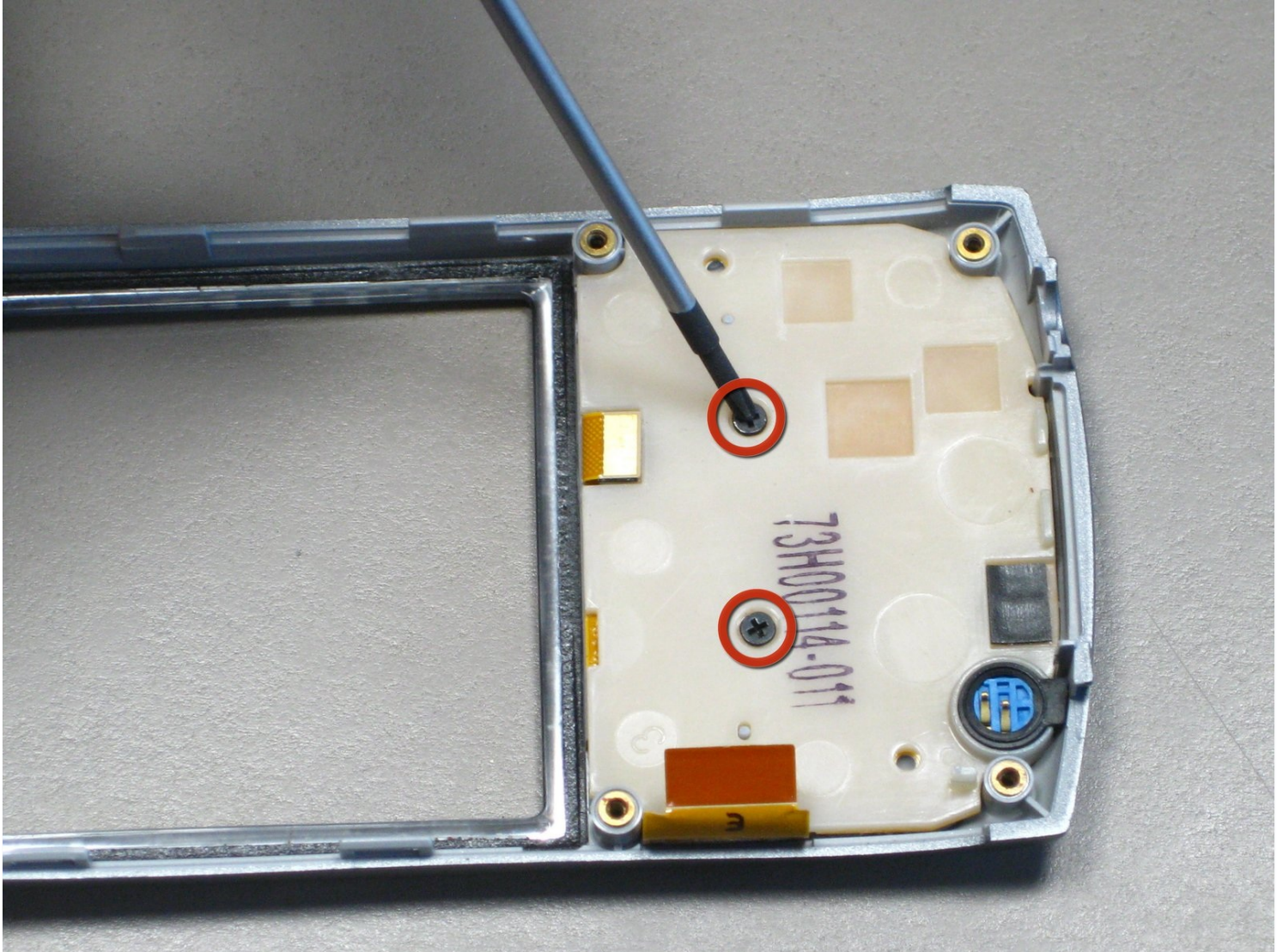




# Palm Treo 650 Keyboard Replacement

This guide will help you take apart, clean, and...

Written By: cgood



# INTRODUCTION

This guide will help you take apart, clean, and (if necessary) replace the palm treeo keyboard.

---

## TOOLS:

[Phillips #00 Screwdriver](#) (1)

[Spudger](#) (1)

[T5 Torx Screwdriver](#) (1)

[iFixit Opening Tool](#) (1)

---

## Step 1 — Battery and Stylus



- Position the phone so the screen faces down.
- Remove the stylus found on the back of the phone.



## Step 2



- Hold the button in the middle of the phone's back to remove the battery cover.
- Slide the cover down to remove it, and set the cover aside.

## Step 3



- Lift the edge of the battery, separating contact points, and pull out as pictured.

## Step 4 — Case



- Remove the round, rubber cover to expose a screw that will be removed in the next step.

## Step 5



- Remove the six 6.9 mm screws as pictured with a T5 Torx screwdriver.
- Remove the single 9.8 mm screw next to the antenna on the back plate, using a Phillips #00 screwdriver.



## Step 6



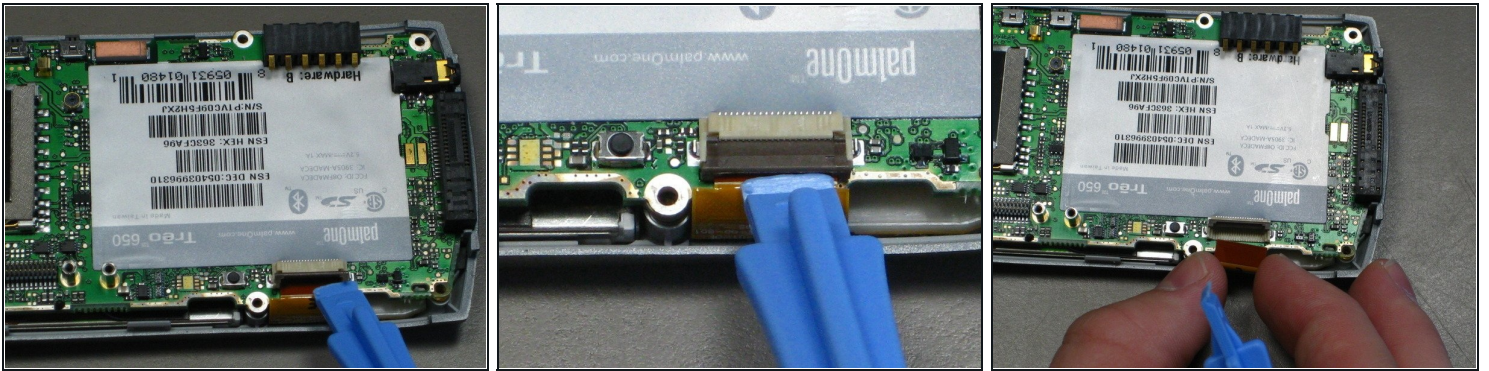
- Pull the antenna outward to remove the antenna from the body of the phone.

## Step 7



- Pry the back cover off using an iFixit opening tool.
- ⓘ Several small clips on the inside attach to the back cover.

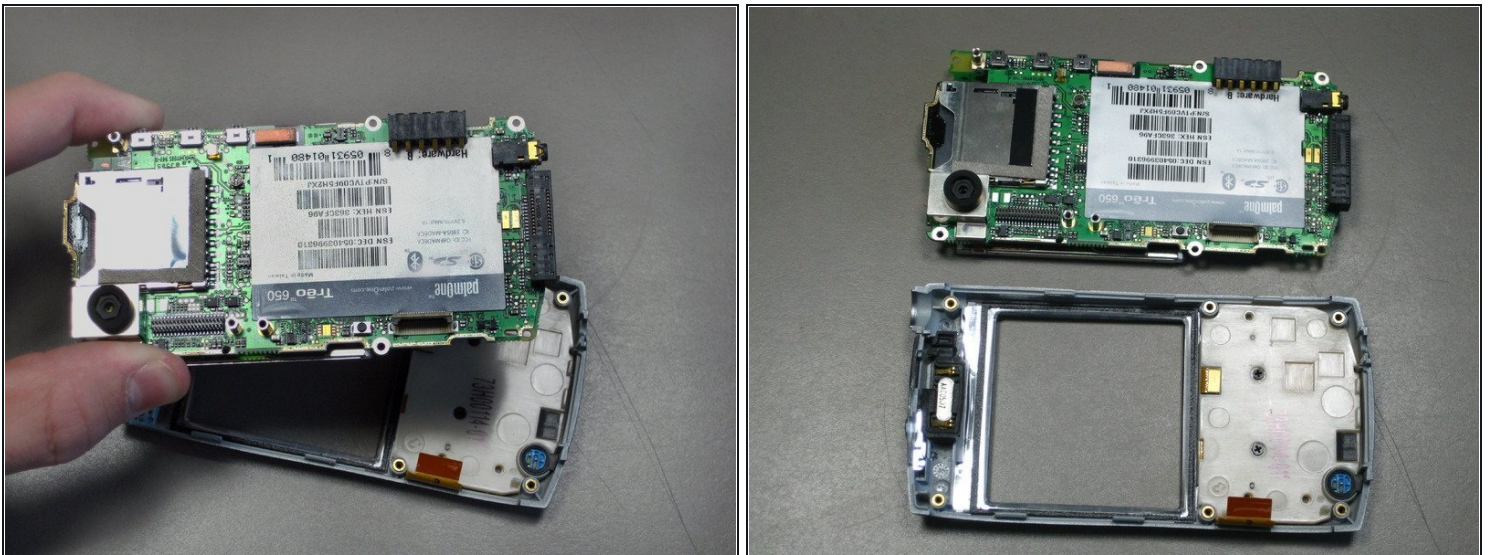
## Step 8 — Motherboard



⚠ Disconnect the ribbon cable before removing the motherboard.

- Unclip the gray tab.
- Pull out the orange ribbon cable.

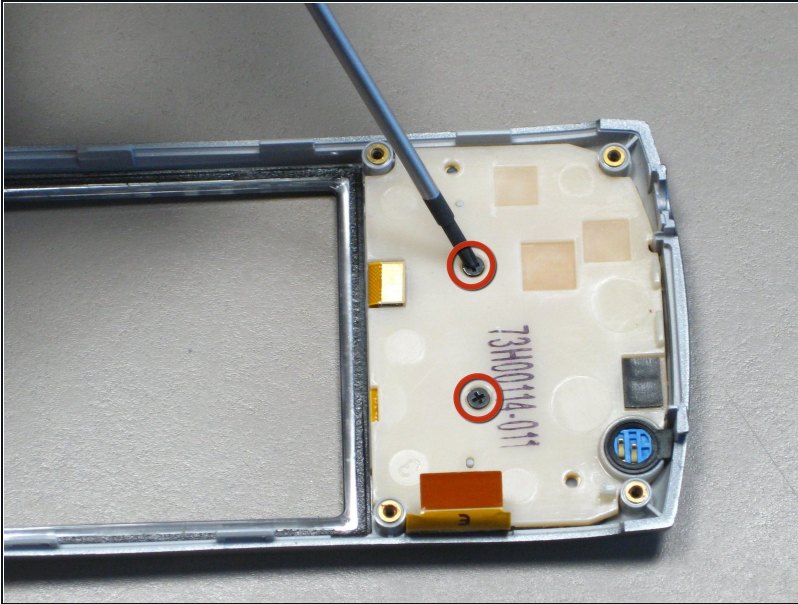
## Step 9



- Pull off the motherboard.

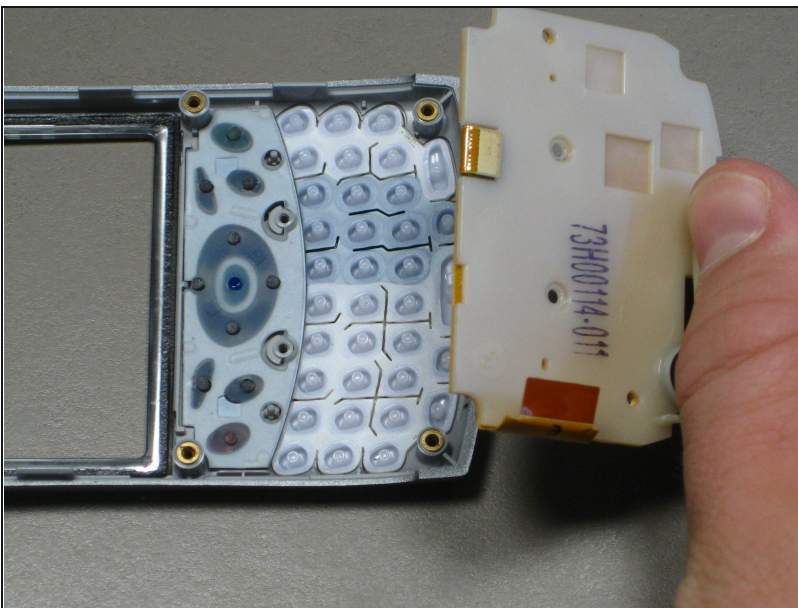


## Step 10 — Keyboard



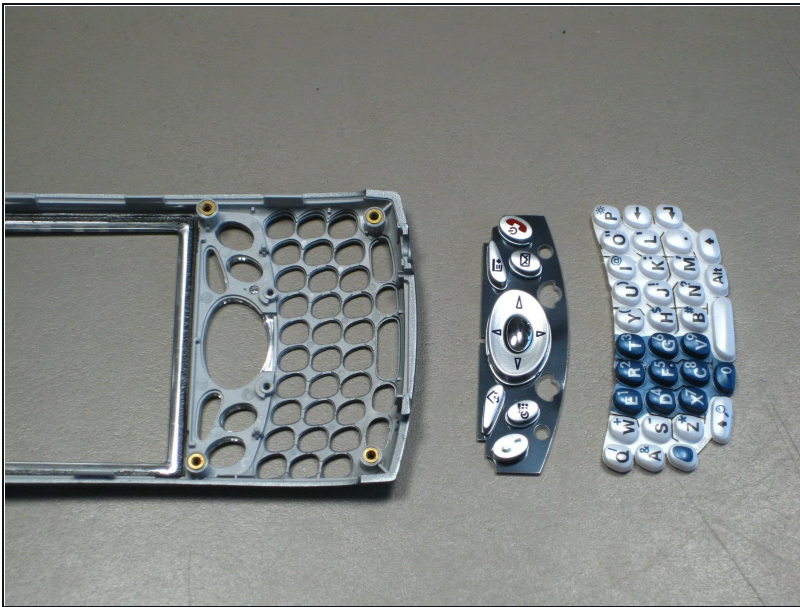
- Unscrew the two 3.2 mm screws with a Phillips #00 screwdriver.

## Step 11



- Pull off the circuit board.

## Step 12



- Remove the keypad for cleaning or replacing.

---

To reassemble your device, follow these instructions in reverse order.