



Siemens EQ Series back panel removal

These instructions show how to remove the back...

Written By: VauWeh



INTRODUCTION

These instructions show how to remove the back panel. First, the side panel on the water tank must be removed.

TOOLS:

[TR10 Torx Security Screwdriver](#) (1)

[iFixit Opening Tool](#) (1)

Step 1 — Remove Siemens EQ Series side panel (tank side).



 **Never forget: pull out the mains plug!**

- Remove all attachments such as water tank, pulp drawer, brew group.
- Remove the coffee container lid and take out all the coffee beans.

Step 2



- Unscrew the two Torx T10 screws at the top of the right side panel.

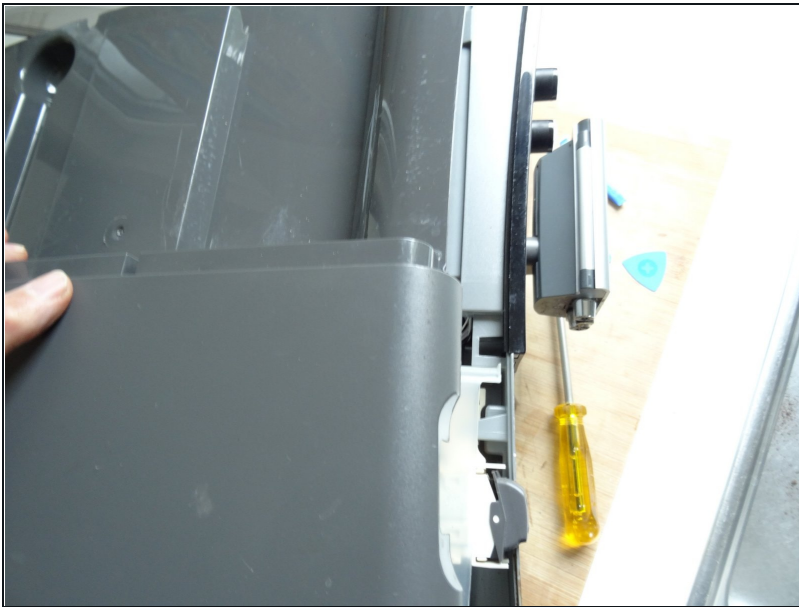
i Some models do not have these screws. Then the side parts are only held by catches, some of which clamp very strongly. You may have to detach the back part first.

Step 3



- Lay the machine on its side with the water tank side facing up.
- The side panel is essentially held on the ground by five strong catches. Pry up the pegs with a strong prying tool. It's pretty difficult and you need a lot of strength.
- If the catches are loose, you can pull the side panel away from below. But it's still stuck in other places.
- Use a plastic tool to pry the top cover up a few millimeters and lift off the side panel. Most of the time it's still stuck, especially at the front edge, you have to pull hard.

Step 4



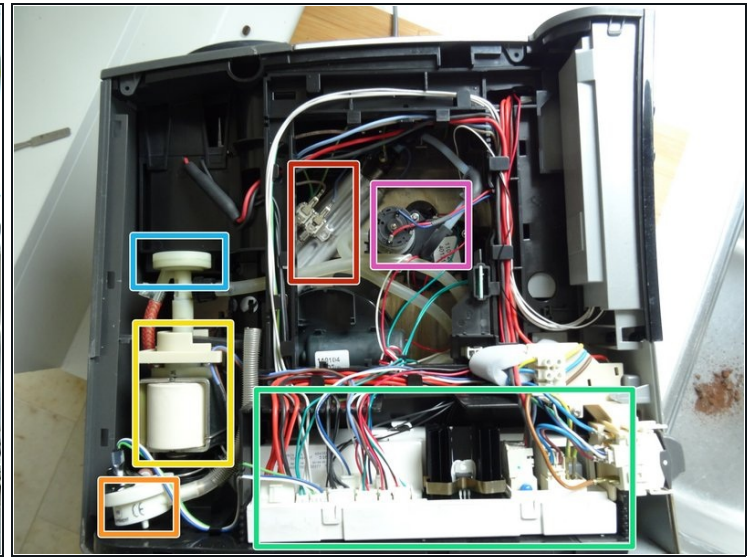
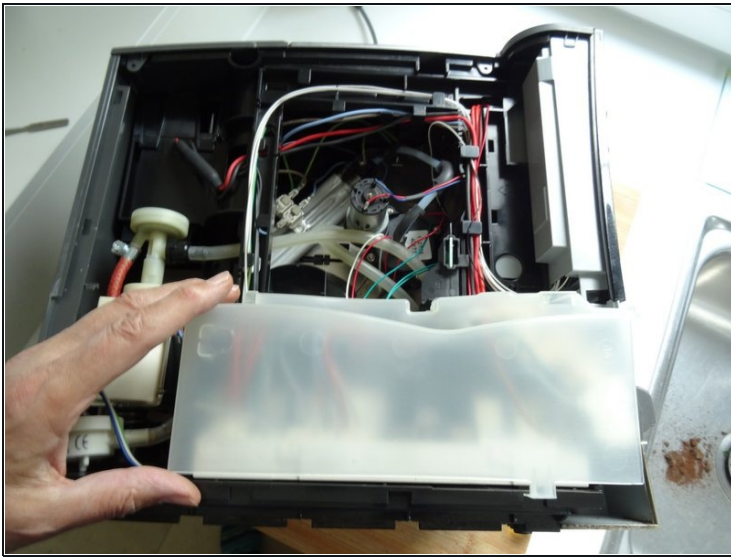
- You may need to pry the front edge with a plastic tool.
- Lift the side panel off, but don't remove it completely yet. It is still connected with a silicone tube.
- The water tank lid is located at the top of the side panel. Lift it up off the hinges.

Step 5



- Pull off the silicone hose that leads to the water connection of the tank from the inside.

Step 6



- Remove the cover over the electronics.
- The second picture shows the most important components:
 - heater
 - Ceramic valve/Brew valve (depending on model)
 - electronics
 - pump
 - mute
 - flow meter

Step 7 — Siemens EQ Series back panel removal



- The rear panel is removed in a similar way to the side panel. To do this, lay the machine on its side with the floor facing you.
- Use a powerful pry tool to loosen the three strong latches on the floor.
- Put the machine back upright so the back is facing you
- The back is locked in place like a bayonet with three locking lugs on the left. Lift the top up about 5mm and slide the back up about 5mm, it'll probably pinch a lot the first time. Then you can take them off.

Follow the steps in reversed order to reassemble your device