



Samsung Galaxy Note10 Battery Replacement

How to remove or replace the battery on a Samsung Galaxy Note10.

Written By: Carsten Frauenheim



INTRODUCTION

Use this guide to remove or replace the battery on your Samsung Galaxy Note10. If your battery is swollen, [take appropriate precautions](#).

For your safety, discharge your battery below 25% before disassembling your phone. This reduces the risk of a dangerous thermal event if the battery is accidentally damaged during the repair.



TOOLS:

- [iOpener](#) (1)
- [iFixit Opening Picks \(Set of 6\)](#) (1)
- [Suction Handle](#) (1)
- [Spudger](#) (1)
- [Tweezers](#) (1)
- [Phillips #00 Screwdriver](#) (1)
- [Isopropyl Alcohol \(90% or Greater\)](#) (1)



PARTS:

- [Galaxy Note10 Replacement Battery](#) (1)
- [Galaxy Note10 Battery Adhesive](#) (1)
- [Galaxy Note10 Rear Cover Adhesive](#) (1)
- [Tesa 61395 Tape](#) (1)

Step 1 — Heat the back panel



⚠ Completely power off your phone before you begin disassembly.

- [Prepare an iOpener](#) and apply it to the left edge of the back panel for one minute.
- ⓘ A hair dryer, heat gun, or hot plate may also be used, but be careful not to overheat the phone—the display and internal battery are both susceptible to heat damage.

Step 2 — Insert an opening pick



- Apply a suction cup to the heated edge of the back panel, as close to the edge as possible.
 - ❗ If your back glass is badly cracked, covering it with a layer of clear packing tape may allow the suction cup to adhere. Alternatively, very strong tape may be used instead of the suction cup. If all else fails, you can superglue the suction cup to the broken panel.
- Pull up on the suction cup with strong, steady force to create a gap between the back panel and the frame.
 - ❗ Depending on the age of your phone, this may be difficult. If you are having trouble, apply more heat to the edge and try again.
- Insert the point of an opening pick into the gap.

Step 3 — Begin to slice the adhesive



- Slide the opening pick along the left edge towards the bottom left corner to slice the adhesive.
⚠ Do not insert the opening pick more than halfway into the phone or you risk damaging internal components.
- Leave the pick inserted in the bottom left corner to prevent the adhesive from re-sealing.

Step 4 — Slice the left side adhesive



- Insert a second opening pick and slide it across the left side towards the top left corner to slice the adhesive.
- Leave the pick inserted in the top left corner to prevent the adhesive from re-sealing.

Step 5 — Slice the top side adhesive



- Prepare an iOpener and apply it to the top edge of the phone for one minute.

Step 6



- Insert a third opening pick into the gap on the top edge of the phone.
- Slide the opening pick to the top right corner, slicing the adhesive.
- Leave the pick inserted in the top right corner to prevent the adhesive from re-sealing.

Step 7 — Slice the right side adhesive



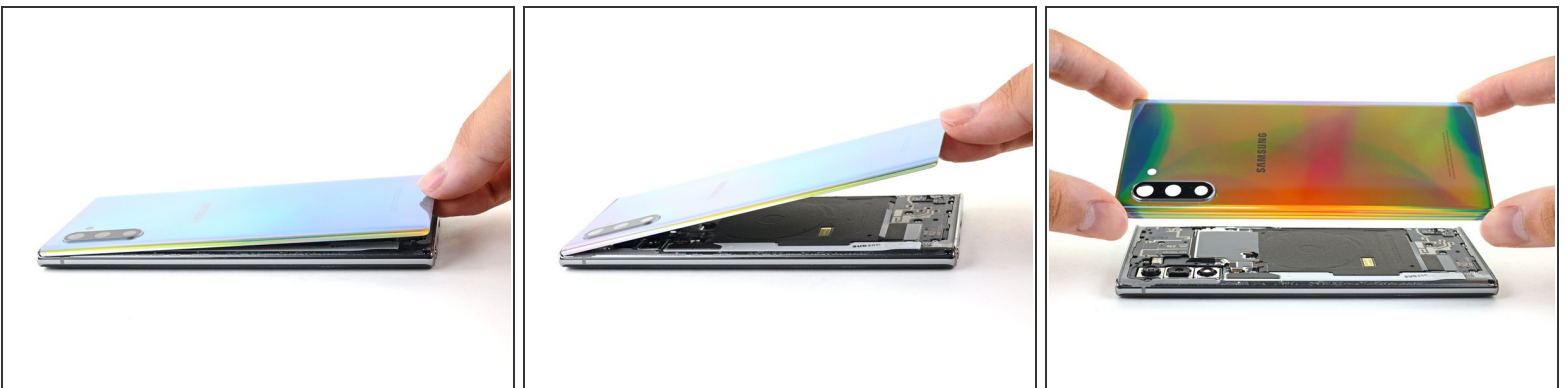
- Prepare an iOpener and apply it to the right edge of the phone for one minute.

Step 8



- Insert a fourth and final opening pick into the gap on the right side of the phone, sliding it down towards the bottom right corner of the phone to slice the adhesive.
- ⓘ The back panel will begin to separate from the phone as you get closer to the bottom edge.
- Slide an opening pick back and forth around the entire perimeter of the phone to release any missed adhesive, reheating if you find any extra-stubborn adhesive.

Step 9 — Lift off the back panel



- Lift up and remove the back panel.

Step 10 — Lift up the metal cover



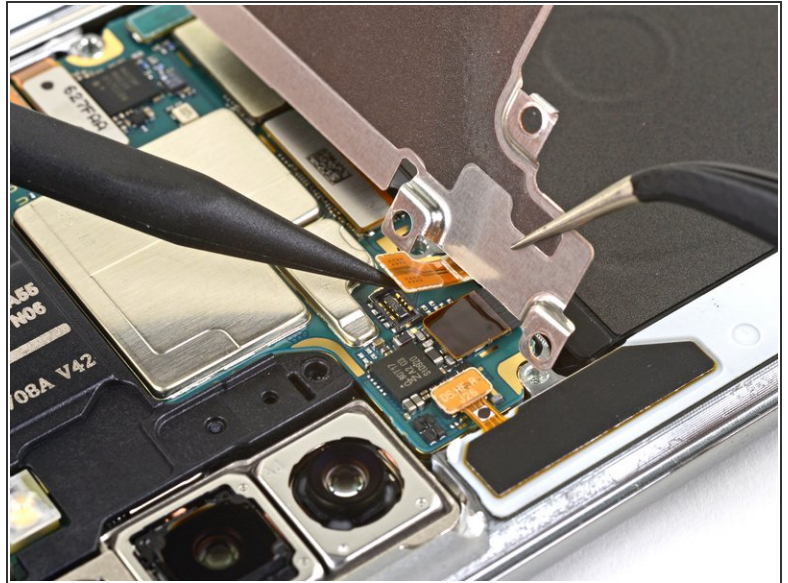
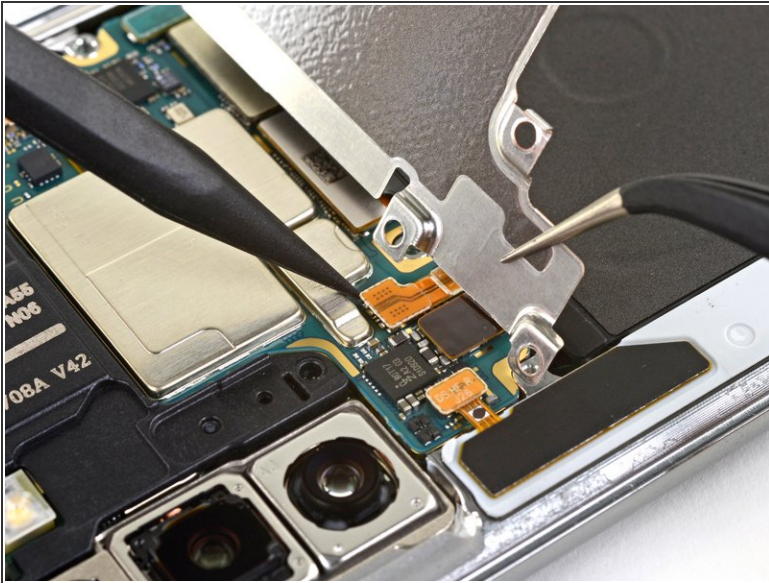
- Use a Phillips screwdriver to remove the five 4 mm screws securing the wireless charging coil.

Step 11



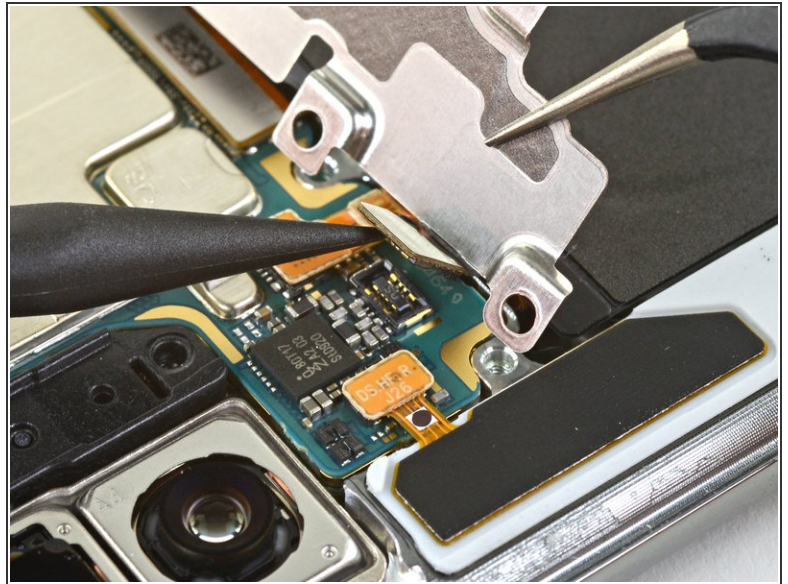
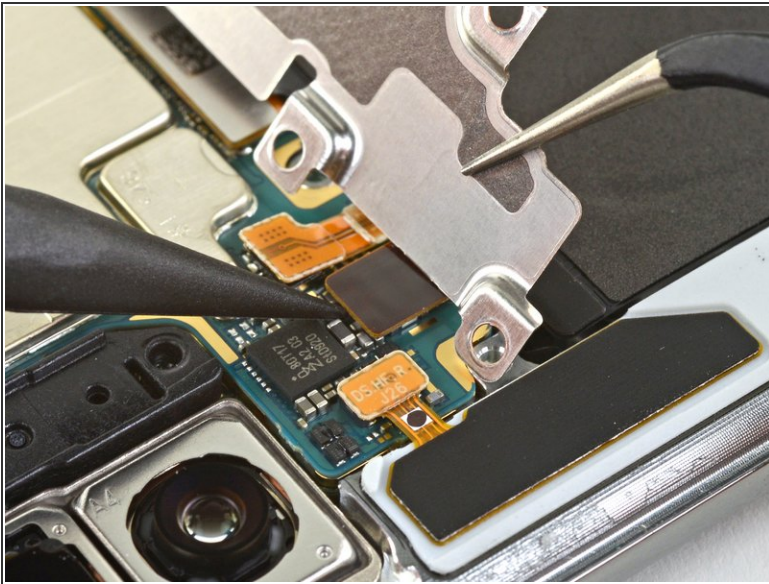
- Use a pair of tweezers to lift up and flip back the metal shield covering the battery connector.

Step 12 — Disconnect the battery



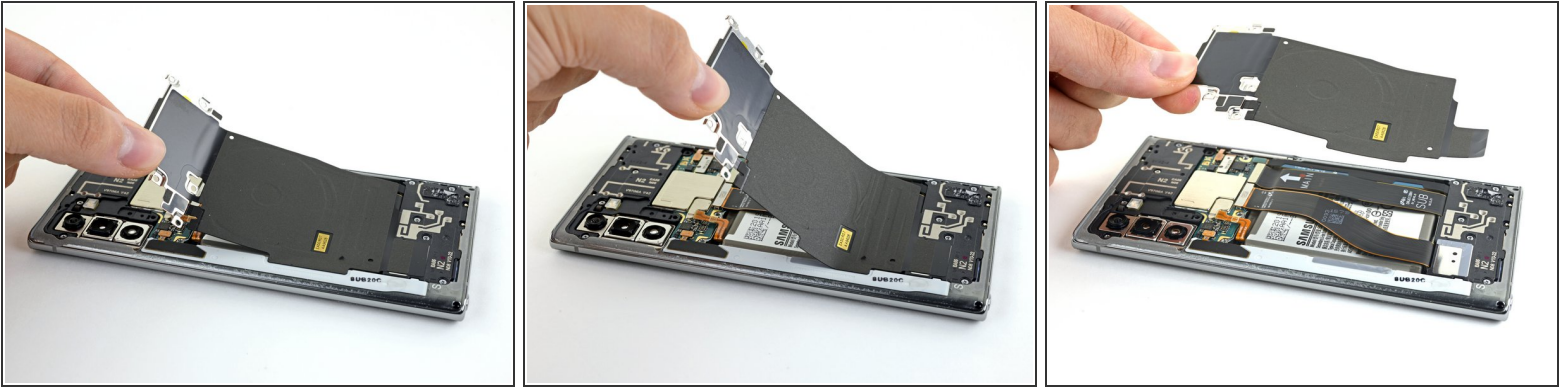
- While holding the metal shield up and out of the way, use the pointed end of a spudger to pry up the battery connector to disconnect it.

Step 13 — Disconnect the wireless charging coil



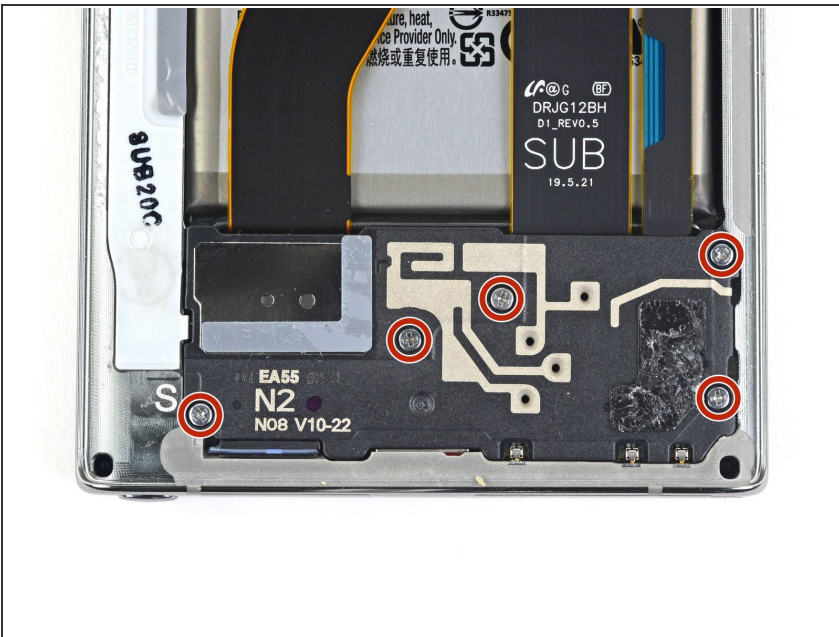
- Use the pointed end of a spudger to disconnect the wireless charging coil connector from the motherboard.

Step 14 — Remove the wireless charging coil



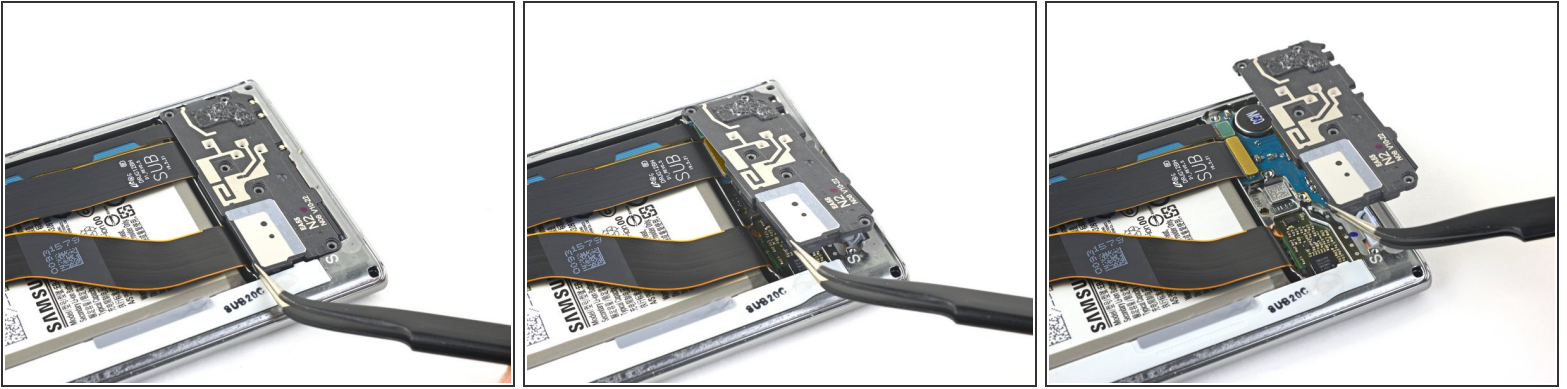
- Tilt the metal shielding up so you can grip it with your fingers.
- Peel the wireless charging coil up and away from the device.
 - ❗ The wireless charging coil is secured to the phone with some light adhesive.
- Remove the wireless charging coil.

Step 15 — Remove the loudspeaker screws



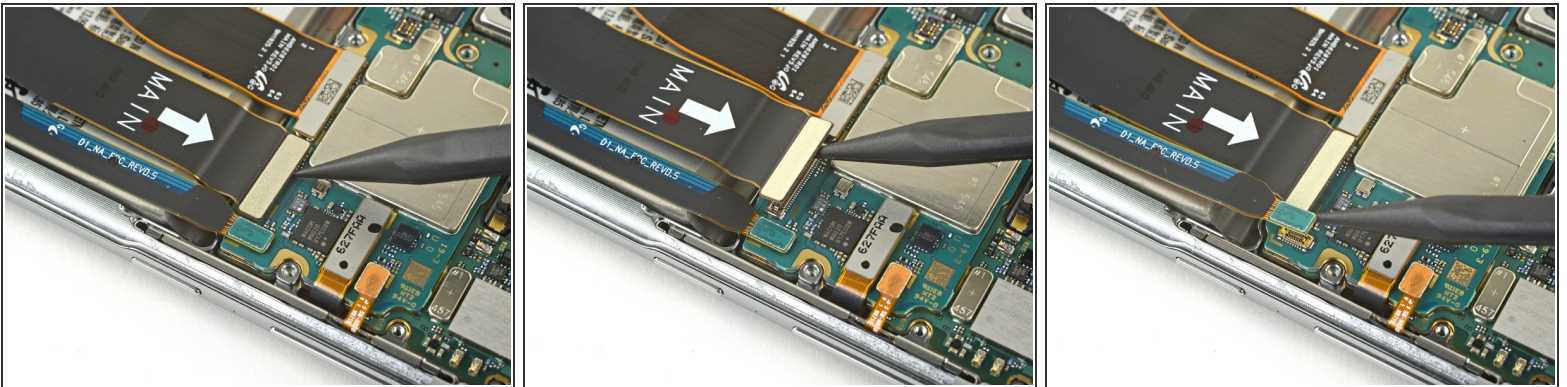
- Use a Phillips screwdriver to remove the five 4 mm screws securing the loudspeaker.

Step 16 — Remove the loudspeaker



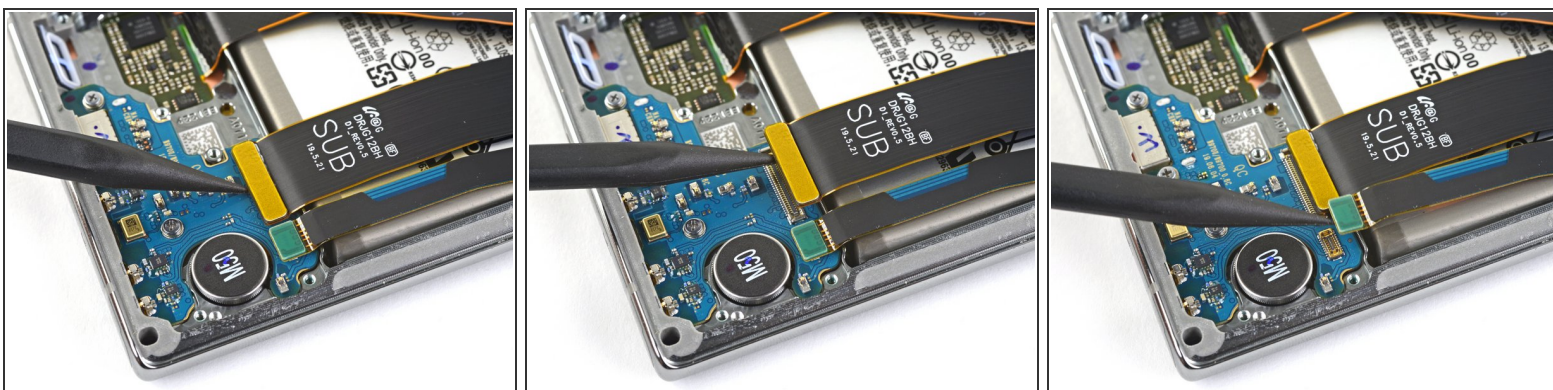
- Use a pair of tweezers to remove the loudspeaker.

Step 17 — Remove the interconnect cables



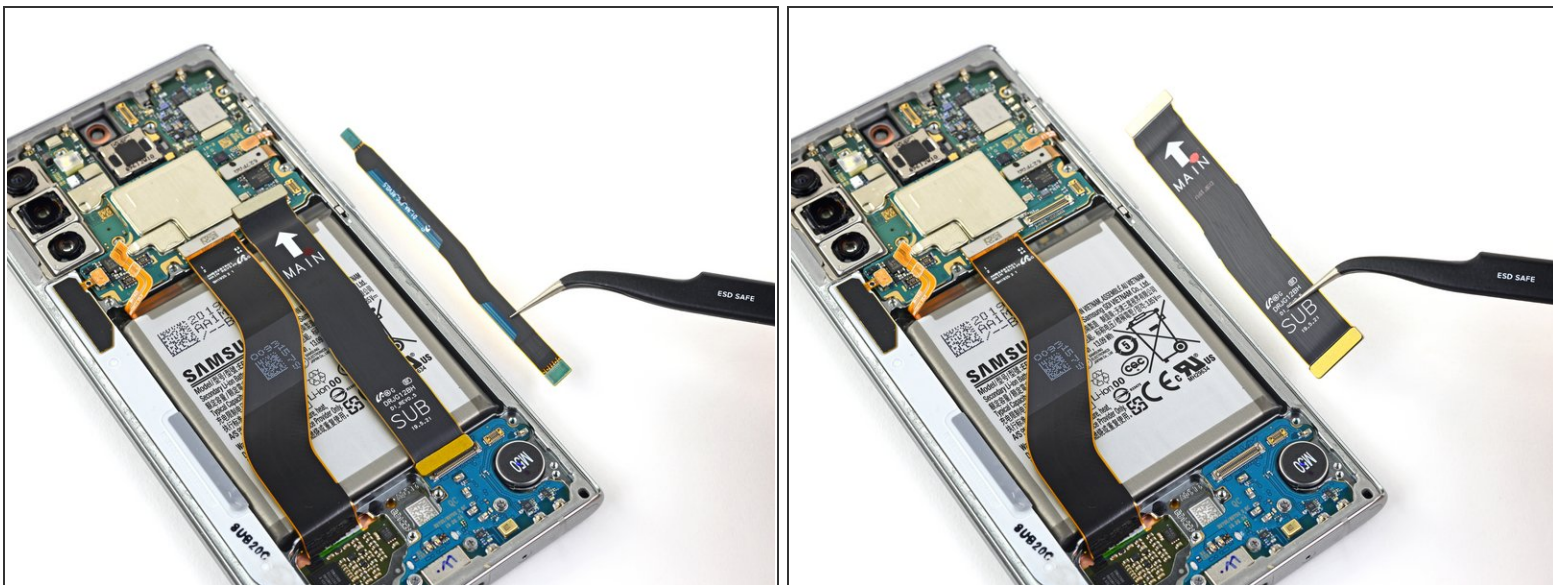
- Use the pointed end of a spudger to disconnect the main interconnect cable from the motherboard.
- Disconnect the secondary interconnect cable from the motherboard.

Step 18



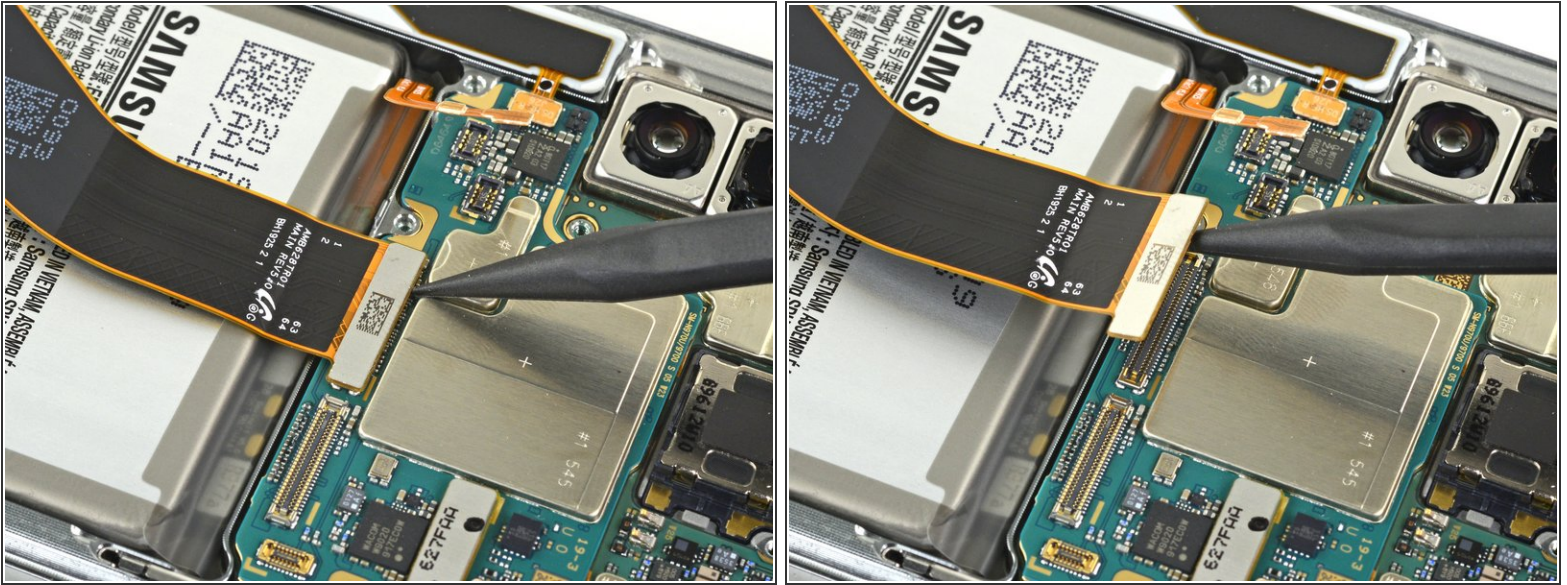
- Use the pointed end of a spudger to disconnect the main interconnect cable from the daughterboard.
- Disconnect the secondary interconnect cable from the daughterboard.

Step 19



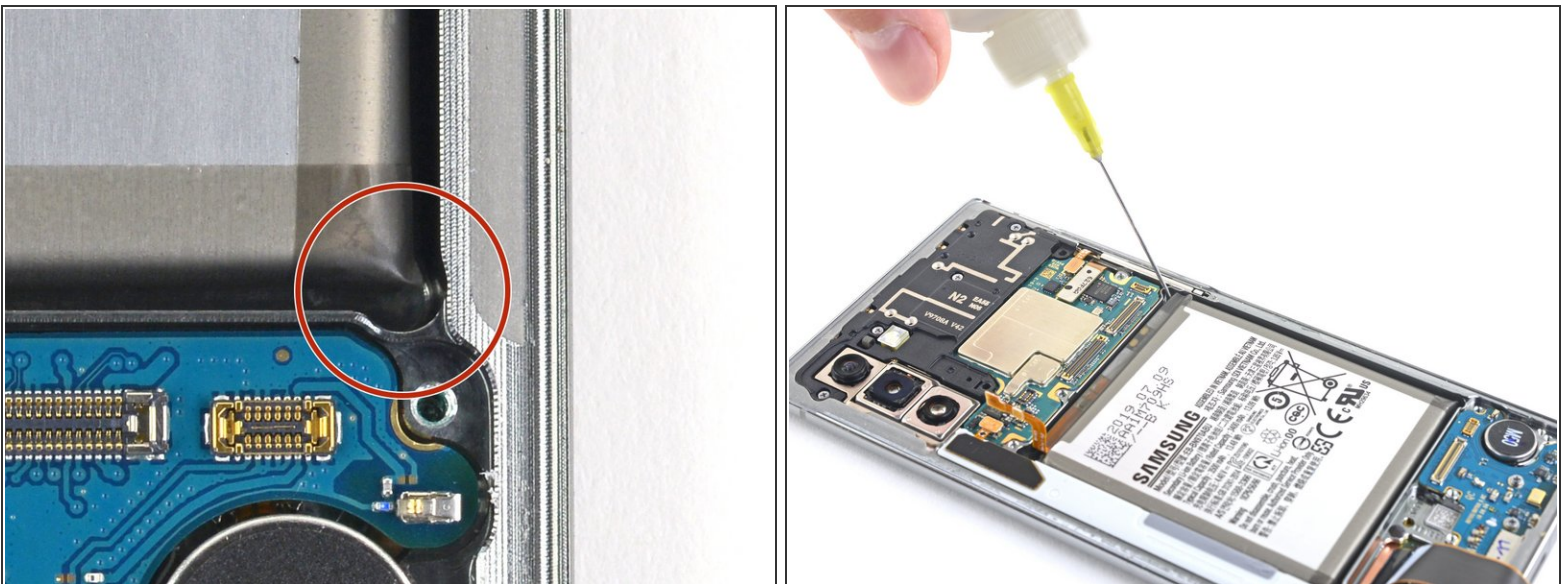
- Remove both interconnect cables.

Step 20 — Disconnect the display cable



- Use the pointed end of a spudger to disconnect the display cable connector from the motherboard.

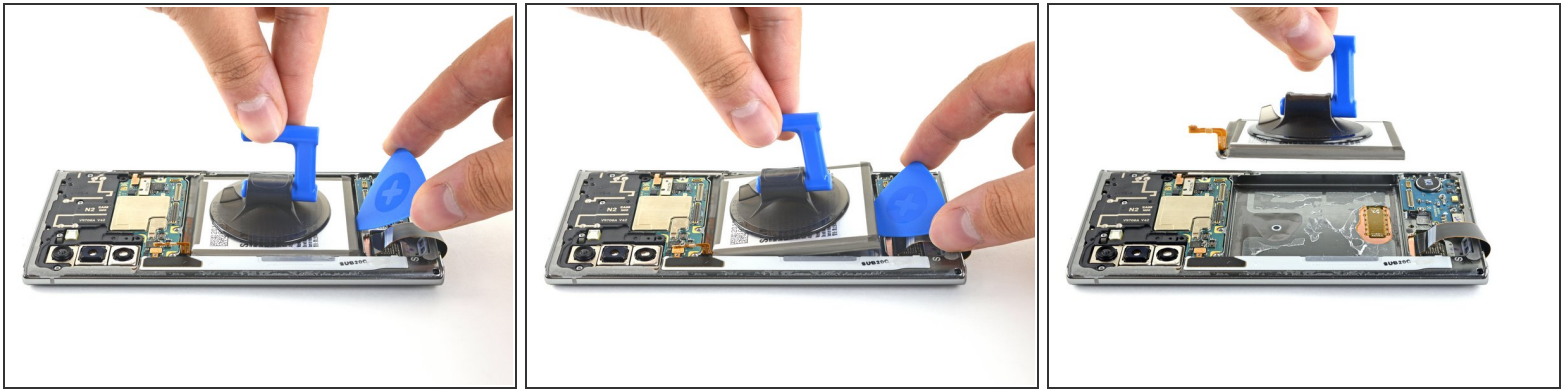
Step 21 — Loosen the battery adhesive



- Apply a few drops of high concentration (90% or greater) isopropyl alcohol underneath the battery at the tear-shaped indents near the corners of the battery well.
- Wait about two minutes for the isopropyl alcohol to penetrate and weaken the battery adhesive before you proceed to the next step.

This document was generated on 2022-06-10 09:01:15 AM (MST).

Step 22 — Remove the battery



- Apply a suction cup to the back of the battery.
- Pull up on the suction cup with strong, steady force to begin to separate the battery from the frame.
 - ❗ If this is difficult, apply a few more drops of isopropyl alcohol underneath the battery, let it sit for two minutes, and try again.
- Insert the point of an opening pick into the gap created between the battery and frame.
 - ⚠ **Don't insert the opening pick more than halfway or you risk damaging the fingerprint sensor underneath.**
- Pull up on the suction cup to remove the battery.
 - ❗ The battery will come out without much force once the isopropyl alcohol has adequately penetrated the battery adhesive.
- ☑ When you're reassembling your phone, apply [stretch release adhesive strips](#), double sided adhesive tape, or [pre-cut adhesive](#) to secure the new battery.

For optimal performance, [calibrate your newly installed battery](#) after completing this guide.

Compare your new replacement part to the original part—you may need to transfer remaining components or remove adhesive backings from the new part before installing.

To reassemble your device, follow the above steps in reverse order.

Take your e-waste to an [R2 or e-Stewards certified recycler](#).

Repair didn't go as planned? Try some [basic troubleshooting](#), or ask our [Answers community](#) for help.

