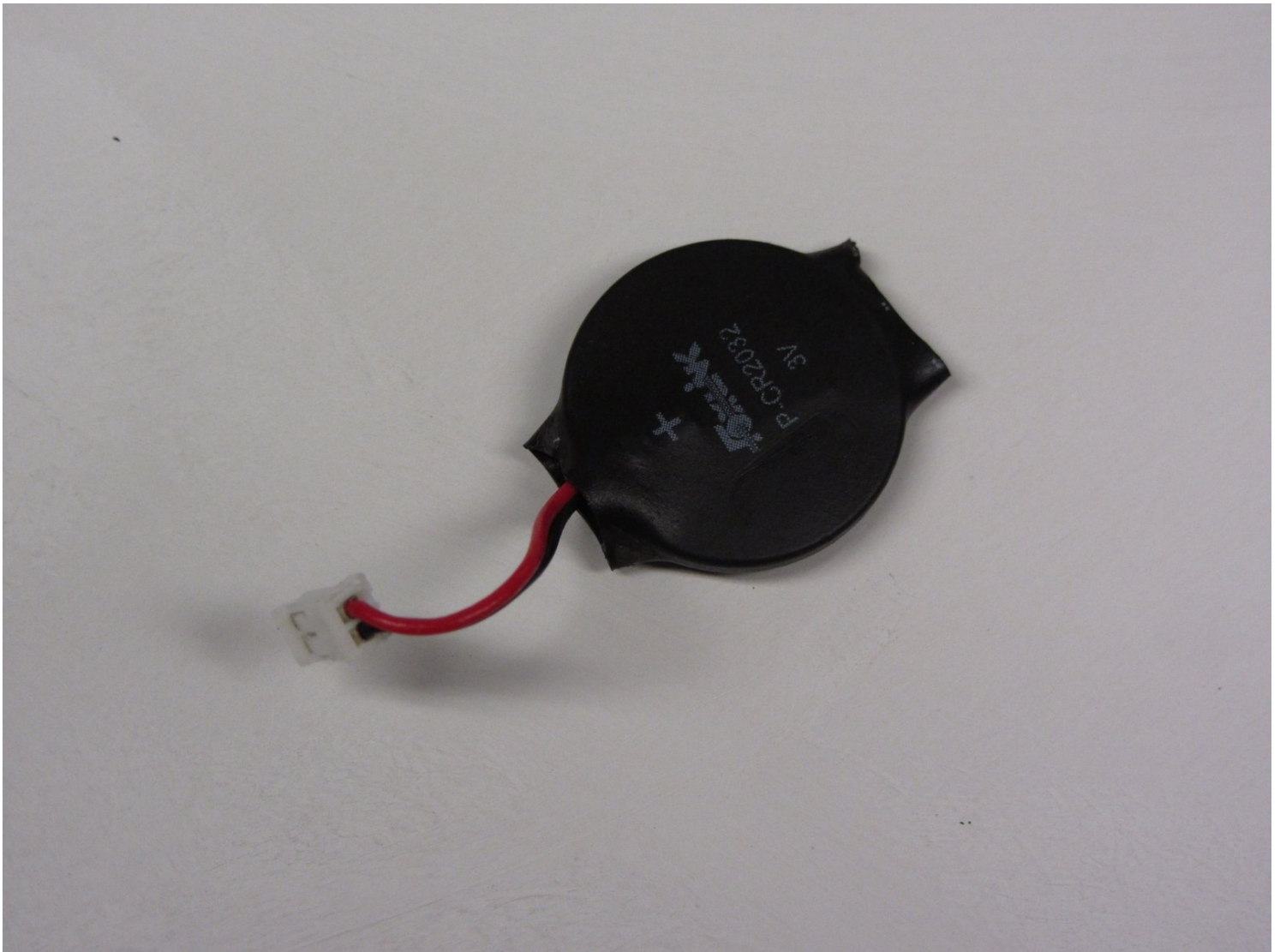




# PlayStation 2 Slimline SCPH-7500x Clock Battery Replacement

This is a step-by-step guide on the PlayStation...

Written By: Jared Hirata



# INTRODUCTION

This is a step-by-step guide on the PlayStation 2 Slimline SCPH-7500x Clock Battery Replacement, which keeps track of the time within the Playstation 2 when off.

The clock battery is a minor fix for the Playstation and will continue to work without it. Its only job is to continue the use of the internal clock once the playstation is off, so when it turns on again, the time will remain accurate.

The process on replacing is a simple 2 step process that will require a Phillips screwdriver, tweezers, and a spudger and requires [removing the Outer Shell](#) before starting the guide. Make sure to power off the device and disconnect from any external power source before beginning.



## TOOLS:

[Phillips #1 Screwdriver](#) (1)  
[Tweezers](#) (1)  
[Spudger](#) (1)



## PARTS:

[CR2032 Lithium Battery](#) (1)

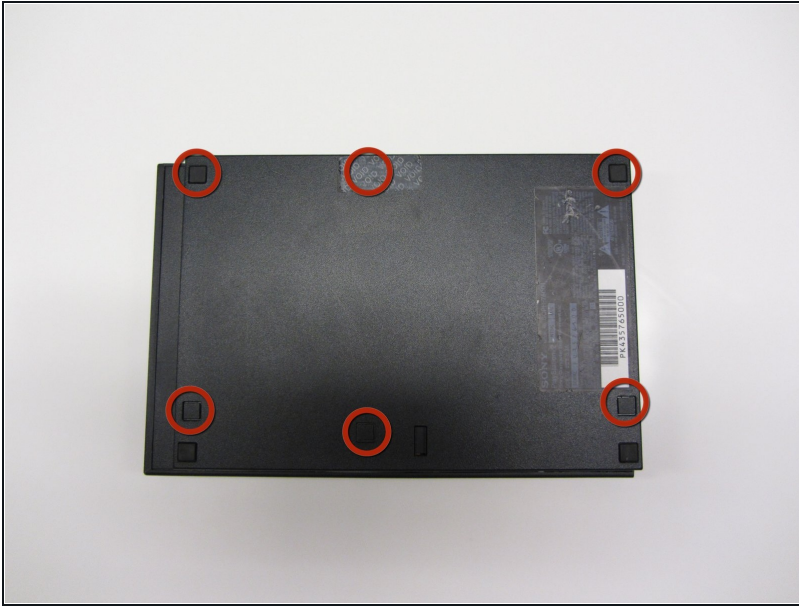
---

## Step 1 — Removing Playstation 2 Slimline SCPH-7500x Outer Shell



- Turn off the PlayStation 2 and carefully unplug it from the power source. Also, it is important to eject the CD from the console before flipping it upside down.

## Step 2



- Locate the six feet on the bottom of the PS2.
- ① Five of these feet are in plain sight while the last foot is located under the black void sticker on the back of the device.
- ① Some versions of the console, such as the PAL Version, may not have this sticker. In this case, the foot or the screw should be in plain sight.

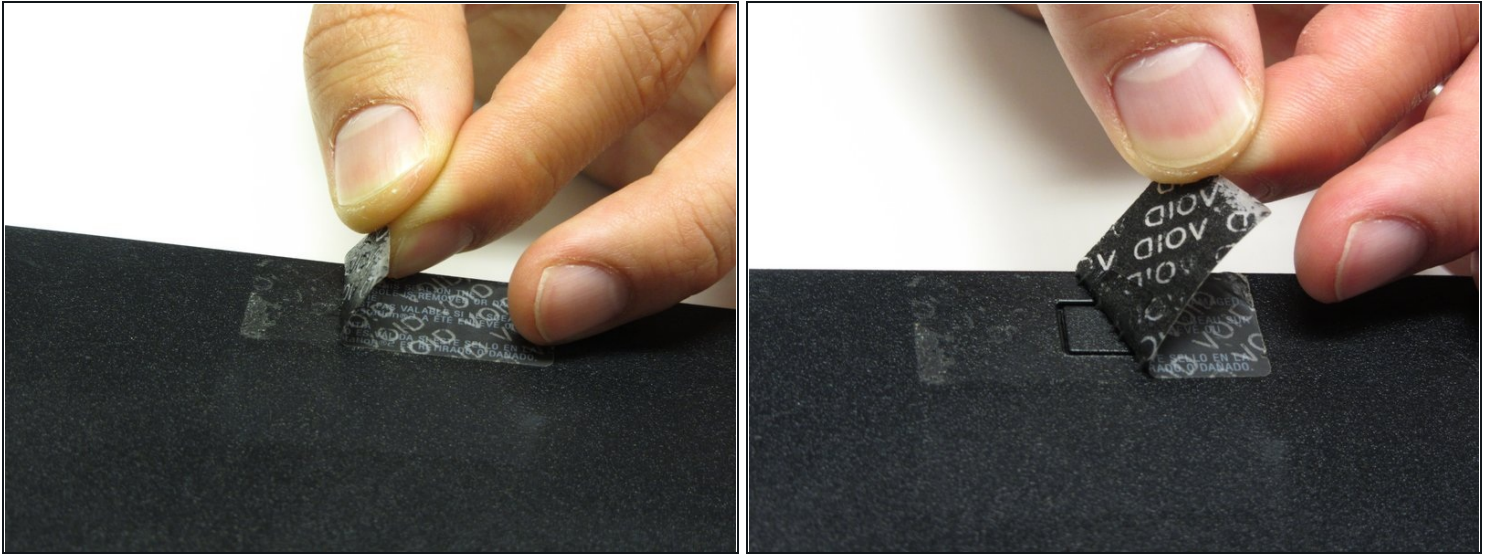
## Step 3



- Remove the five visible feet from the bottom of the device using a spudger.

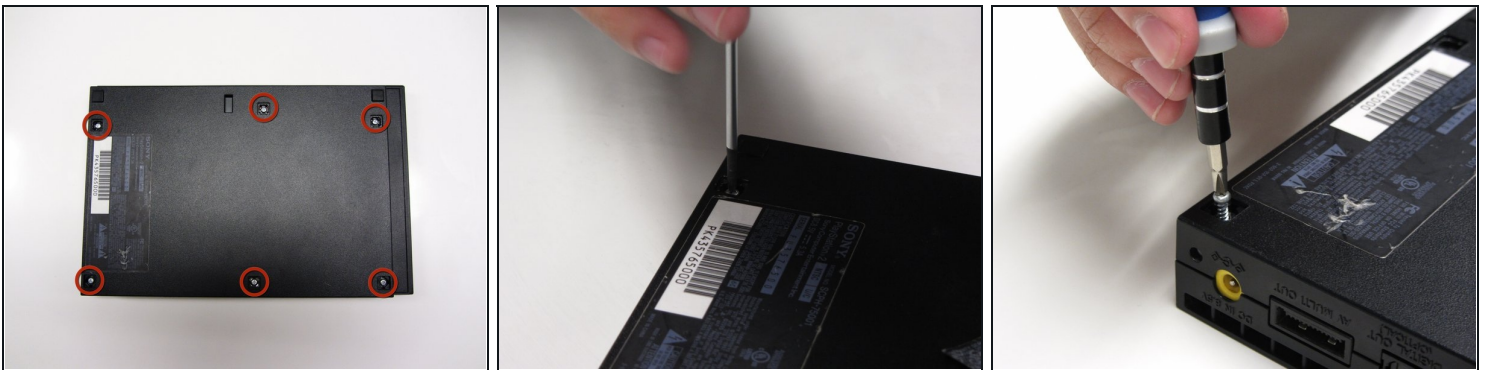


## Step 4



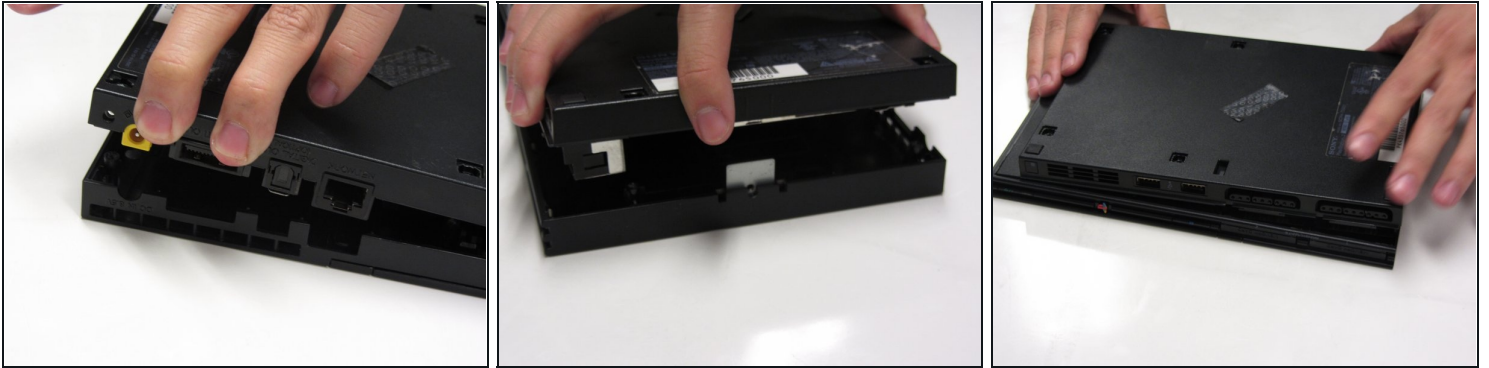
- Remove the sticker and then remove the 6th foot.

## Step 5



- After all of the feet have been removed, Use a Phillips #1 screwdriver to remove the six 4.0mm screws from the base of the PS2.

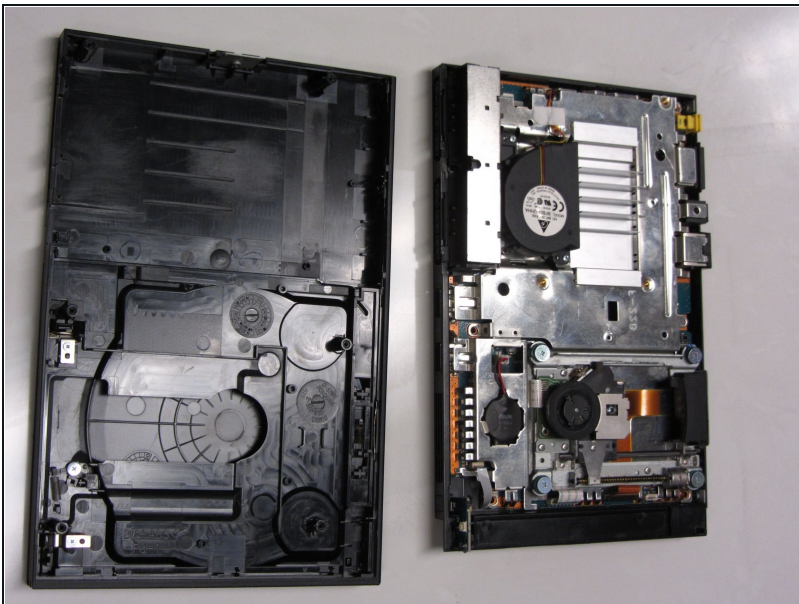
## Step 6



- Once all of the screws have been removed, pry apart the plastic covers. Start by lifting the side containing the power cable and Ethernet port. Then, lift the opposite side to fully separate the two sides.

⚠ You may need to apply some gentle force to detach the covers. Be careful not to break the plastic screw pins.

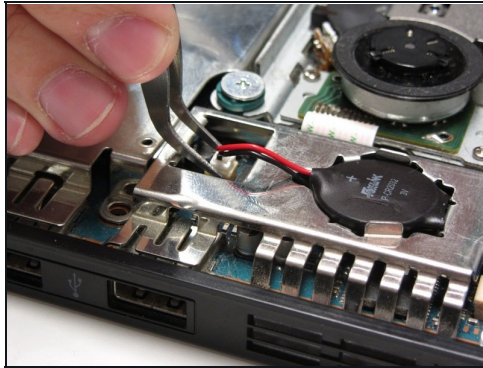
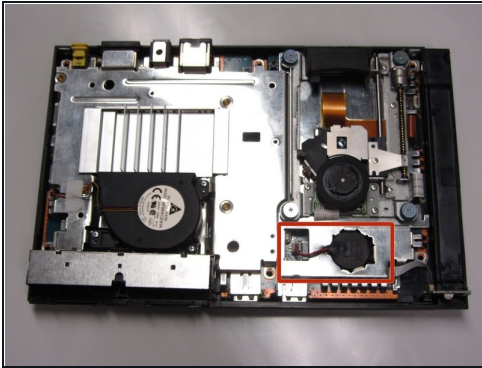
## Step 7



- If done correctly, you should have a fully detached plastic backing, revealing the electronic components of the PlayStation 2.

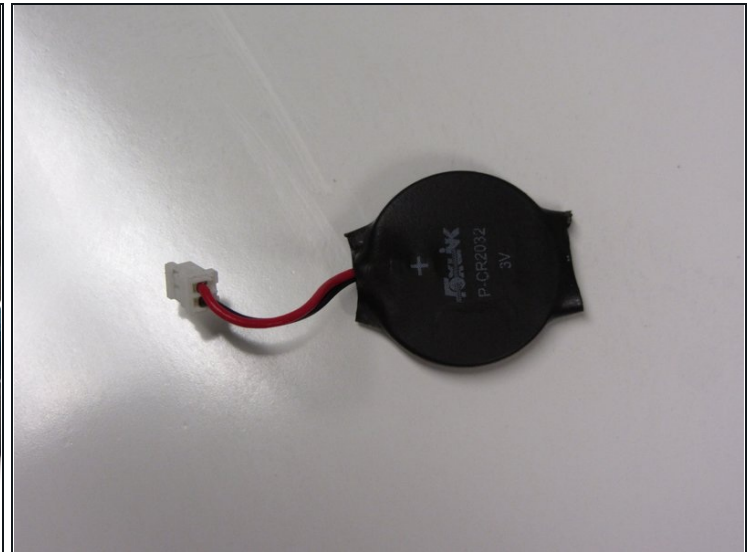
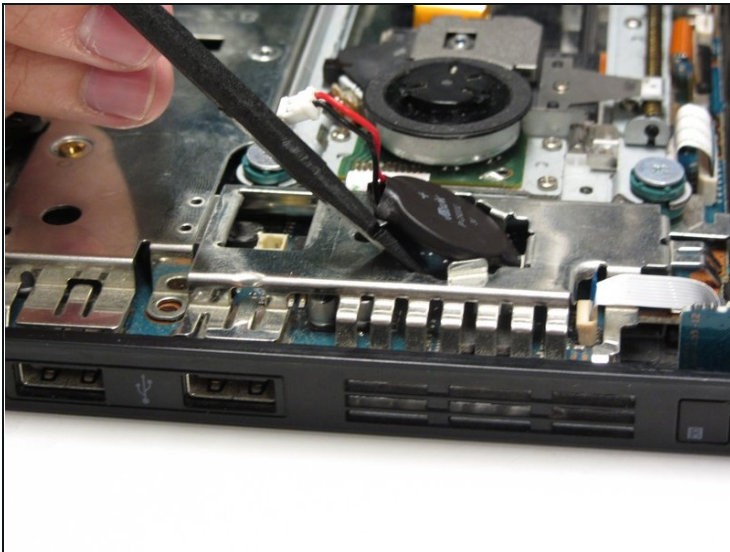


## Step 8 — Clock Battery



- Identify the clock battery, then use tweezers to disconnect the connector from the motherboard.

## Step 9



- Gently lift the battery up from the battery compartment using a spudger.

To reassemble your device, follow these instructions in reverse order.