



Porsche 997.1 PCM 2.1 Screen Replacement

Replace the Sharp Sharp LQ058T5AR04 5.8 inch LCD Display.

Written By: m330cameron



INTRODUCTION

In my case, I had to replace the screen due to the appearance of surface blisters. This not only looked unsightly, but the pixels distorted as well.



TOOLS:

- [T9 Torx Screwdriver](#) (1)
- [Metal Spudger](#) (1)
- [Spudger](#) (1)
- [Magnetic Project Mat](#) (1)



PARTS:

- [Sharp LQ058T5AR04 5.8 inch LCD Display](#) (1)

Step 1 — Starting out



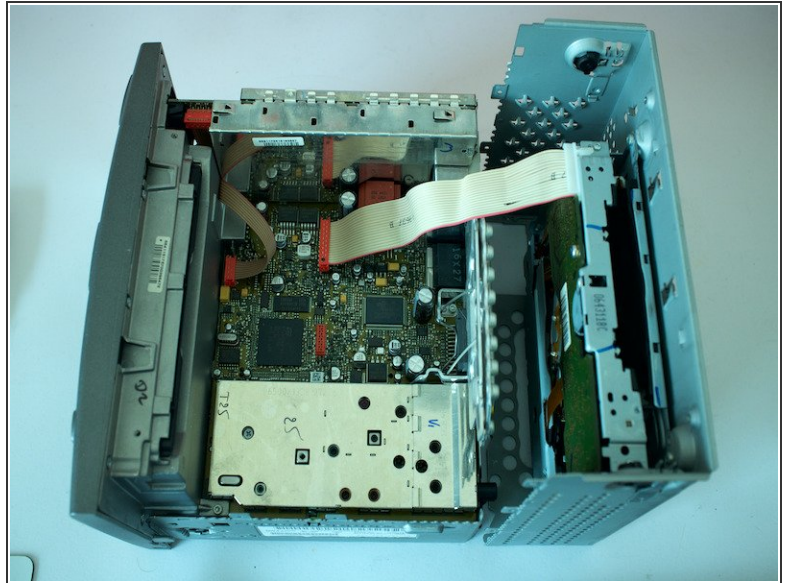
- This guide only shows the steps to change the screen once the PCM has been removed from the car. There are lots of great You Tube videos that cover the removal process.

Step 2 — Remove the two access screws



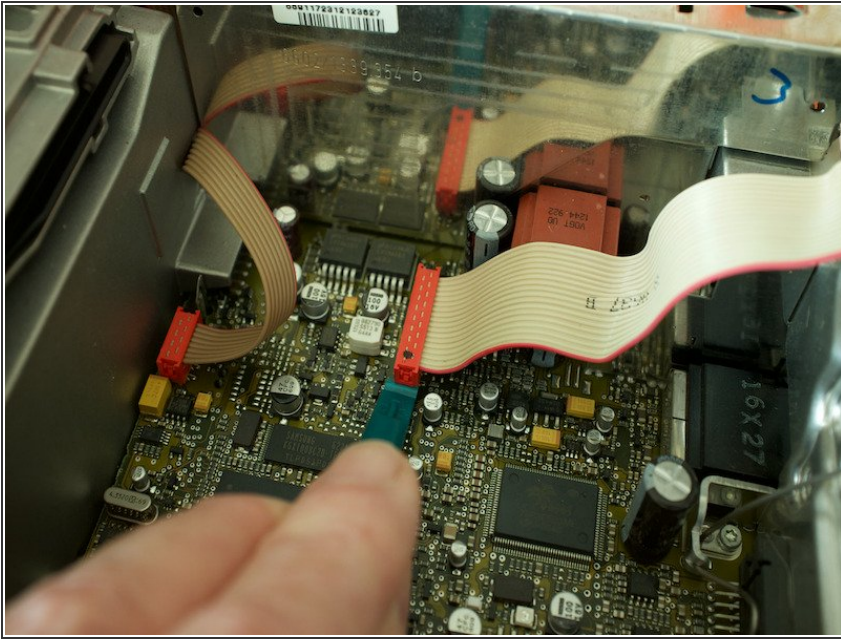
- ⚠ As the top of the unit says: the PCM should not be opened. Remove the two Torx T9 machine screws

Step 3 — Splitting the PCM top from the bottom



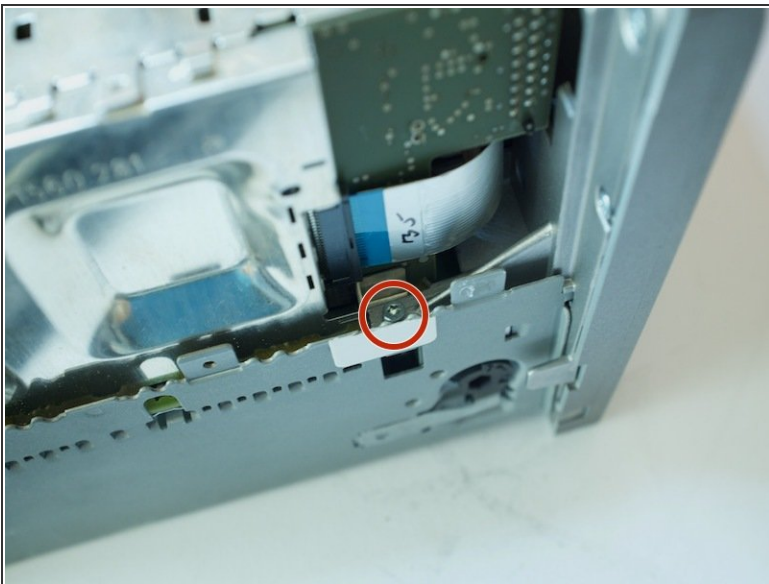
- Carefully split the PCM case in half. There are several interlocking tabs, but essentially open from the front to the back like an oyster shell. The top half can be set behind the unit as shown in the second photo.
- ⚠ Do not use excessive force, the CD unit is in the top half and joined to the motherboard via a PC cable.

Step 4 — Separating the CD unit from the main chassis



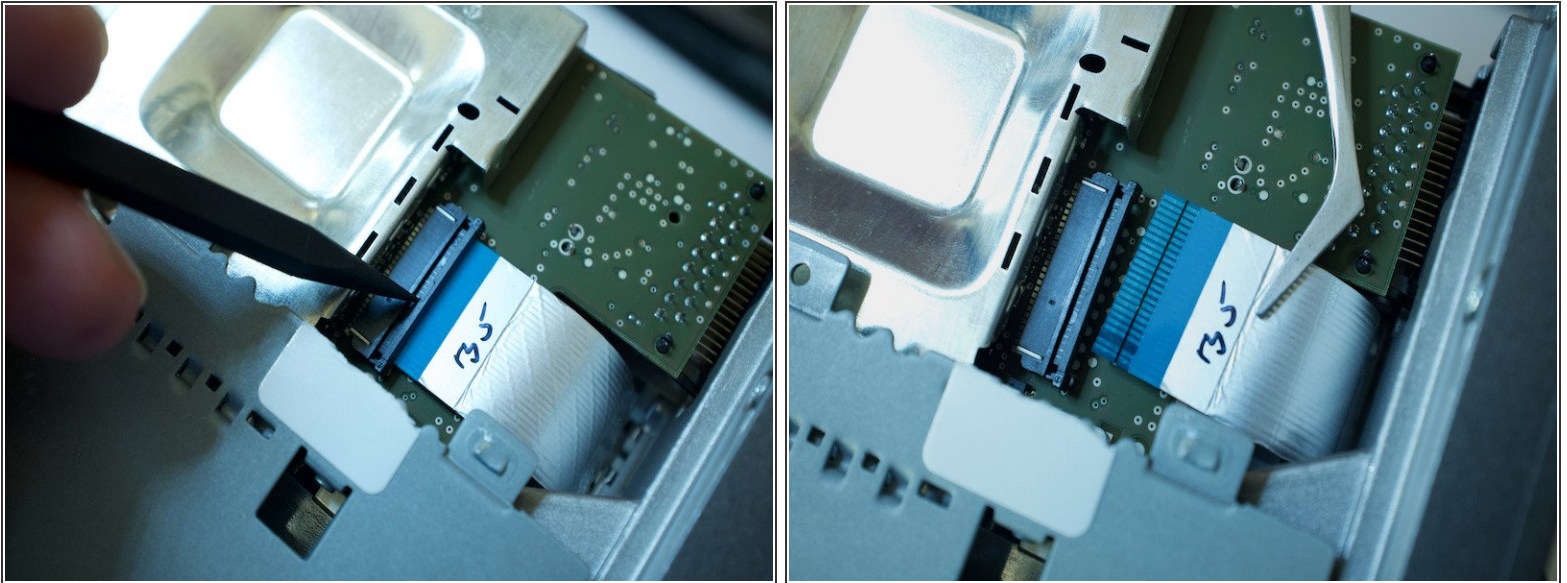
- Use a plastic spudger to disconnect the PC ribbon cable joining the CD player to the motherboard and place the CD unit safely to one side.

Step 5 — Removing the torx fasteners connecting the fascia with the main chassis



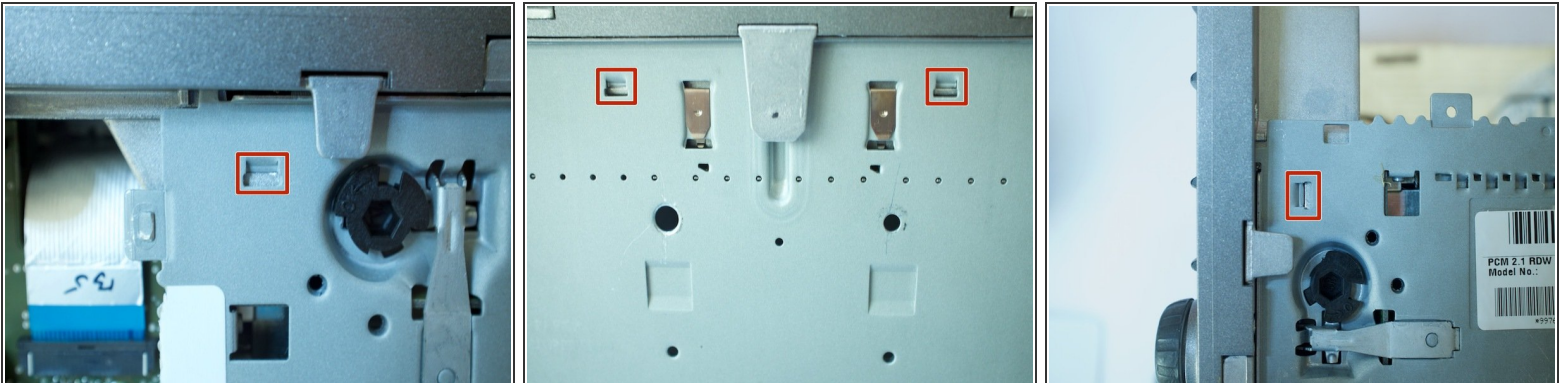
- Remove the two Torx T9 machine screws that attach the front fascia to the chassis. There is one screw either side as shown in the photos.

Step 6 — Disconnecting the ribbon cable



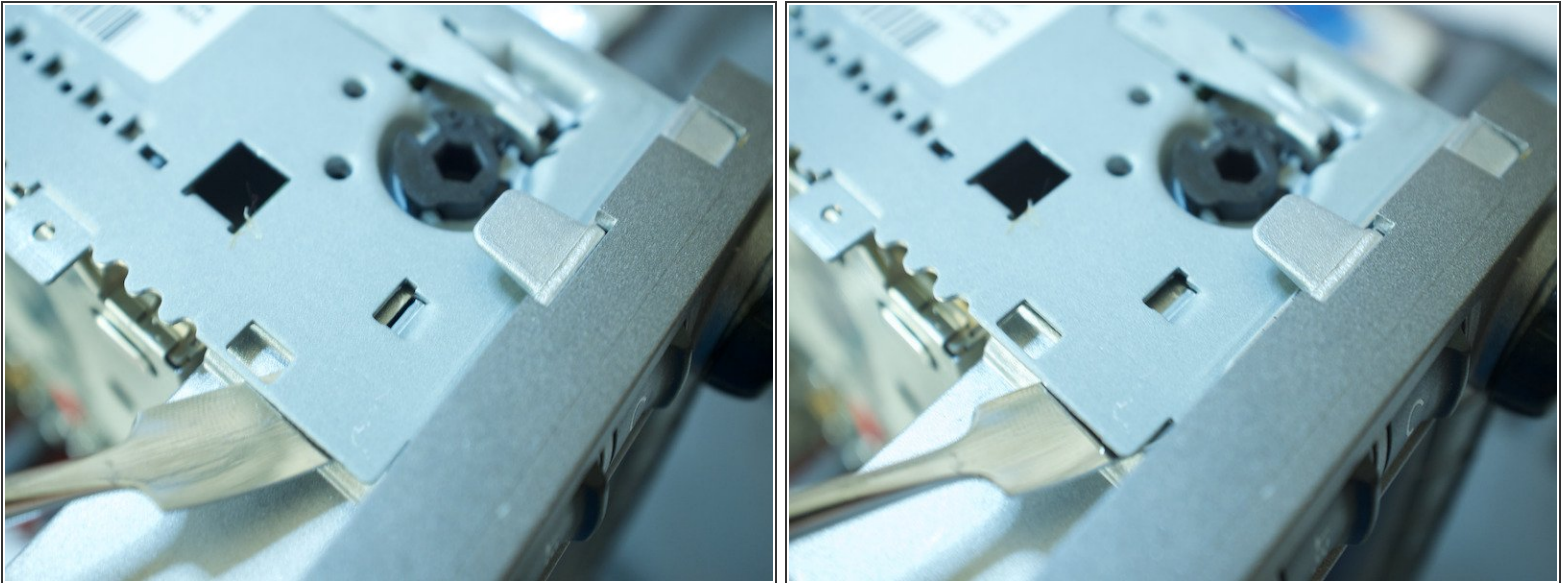
- Open the ribbon cable lock (there is probably a proper name for it) and remove the ribbon cable on the left hand side of the unit.

Step 7 — Identifying the tab retainers keeping the facia connected to the chassis



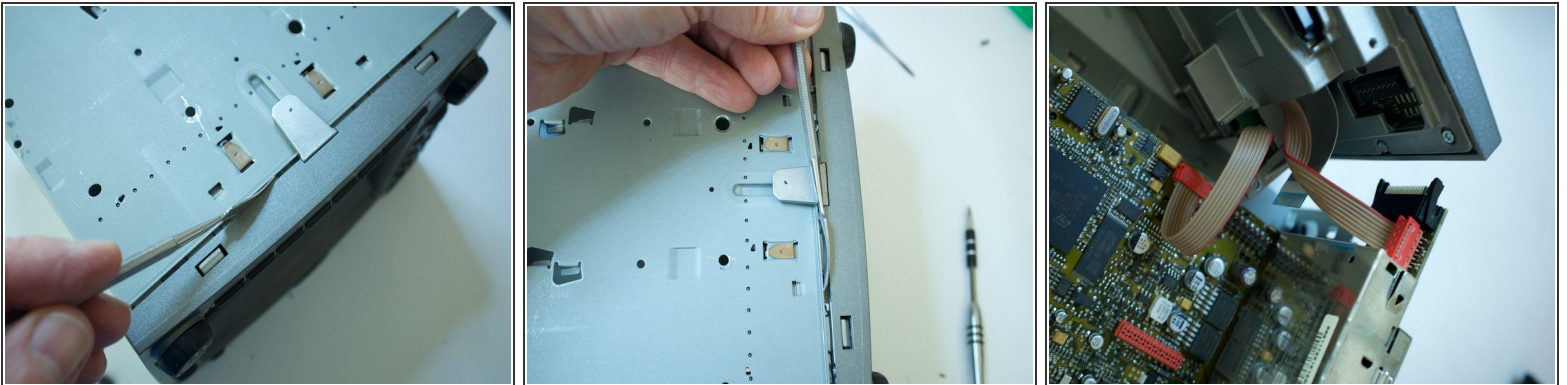
- This is the most difficult step in the process. Firstly, identify the four tab retainers holding the facia to the chassis. The three photos show them all.

Step 8 — Using a metal spludger to disconnect the retaining tabs



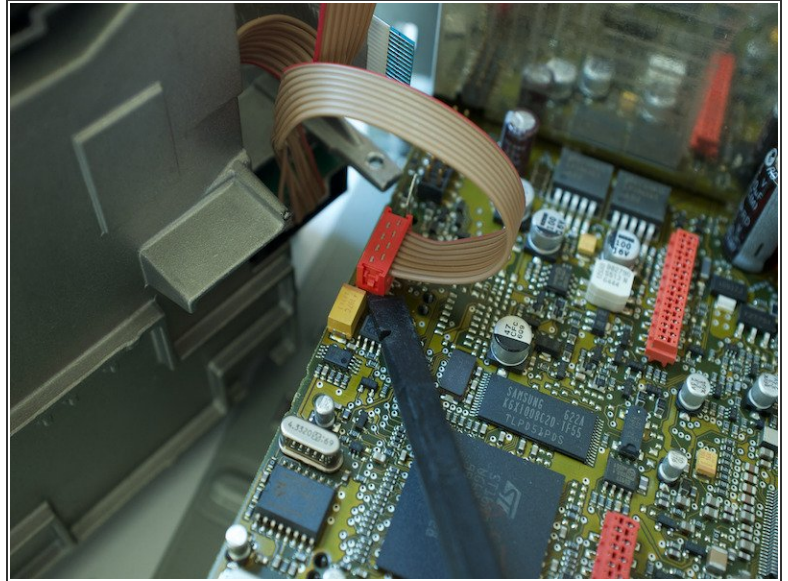
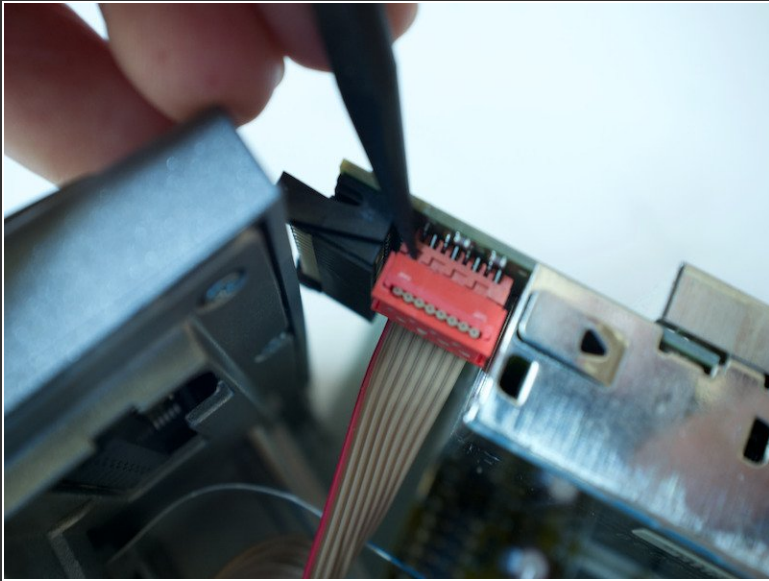
- A curved metal spludger seemed to work well for this. Each tab had to be carefully leveraged up to disconnect them from the facia.

Step 9 — Prying the facia away from the chassis



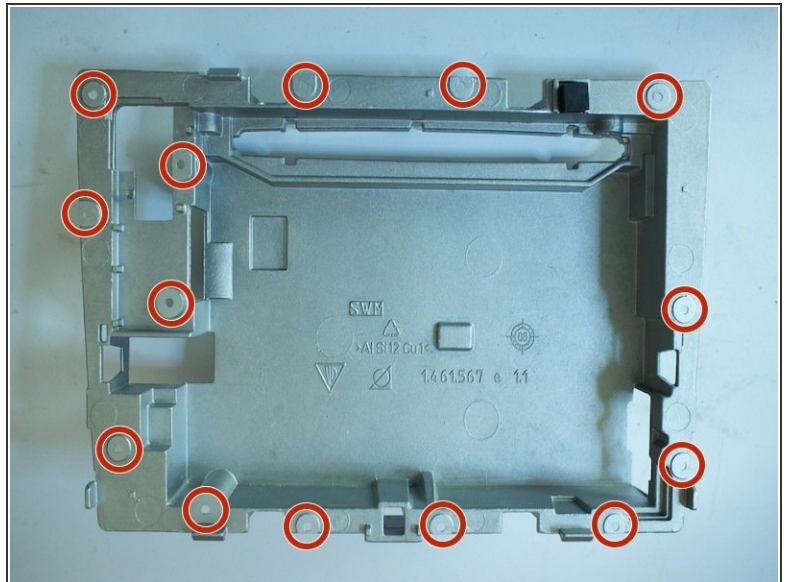
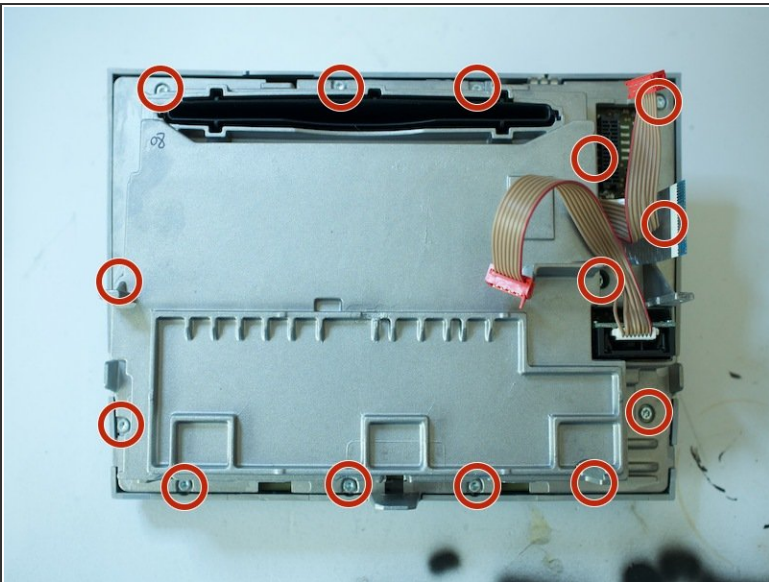
- Working around the tabs, the facia can be gently pried off the chassis. This requires patience and care.
- ⚠ When the facia has come apart from the chassis, care is required as the two are still connected with another two PC ribbon cables.
- The third photo shows the fixed connector which needs careful realignment on reassembly.

Step 10 — Disconnect the PC ribbon cables joining the facia to the chassis



- Use a spudger to disconnect the PC ribbon cables connecting the facia to the chassis.

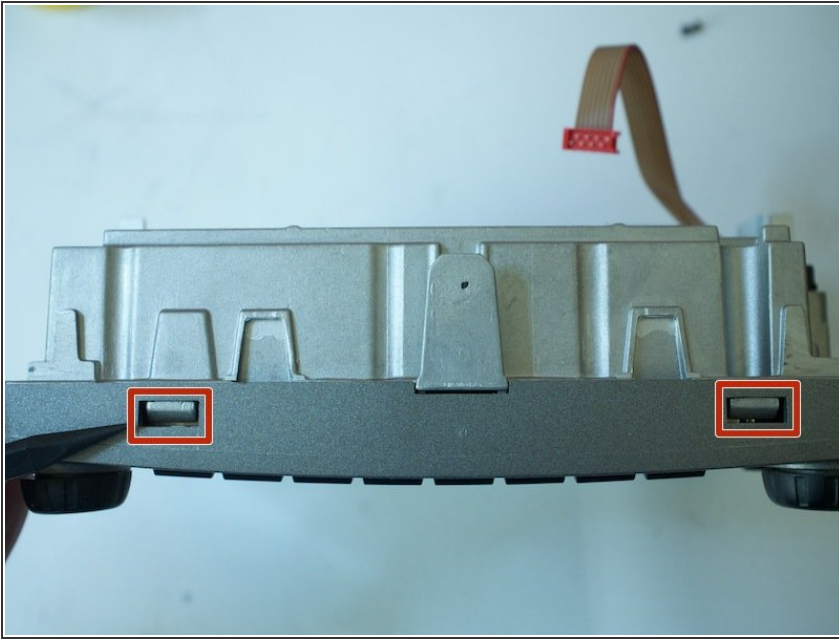
Step 11 — Identify all the torx T9 fasteners on the facia



- The two halves of the facia are connected using 14 torx T9 self tapping screws.

⚠ If you only find thirteen, you have missed one of the little blighters. If you only find twelve.. well see previous comment but add one to the list of missed fasteners. The back of the casting is show as it better indicate the fastener placements.

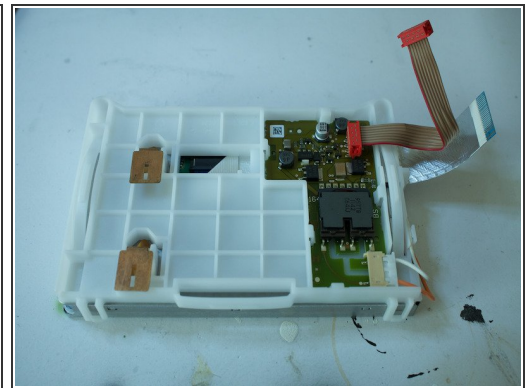
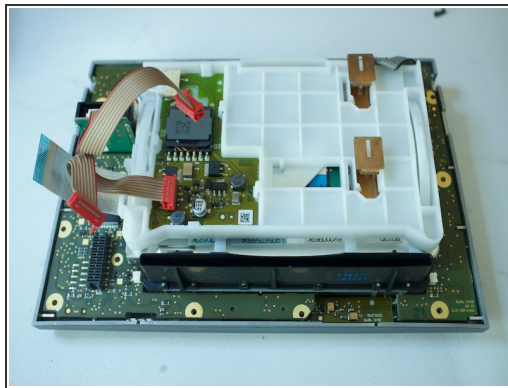
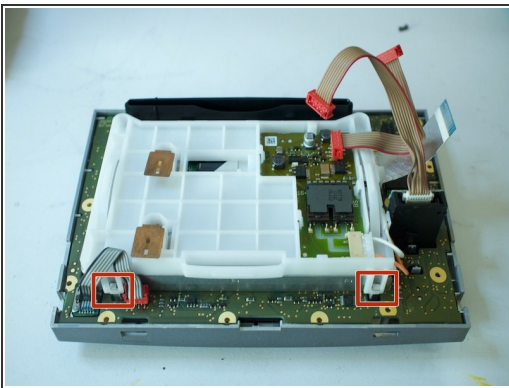
Step 12 — Disconnect the remaining tabs holding the facia together



- Once all 14 torx T9 screws have been found and undone, there are two tabs remaining that need to be disconnected before the facia comes apart.

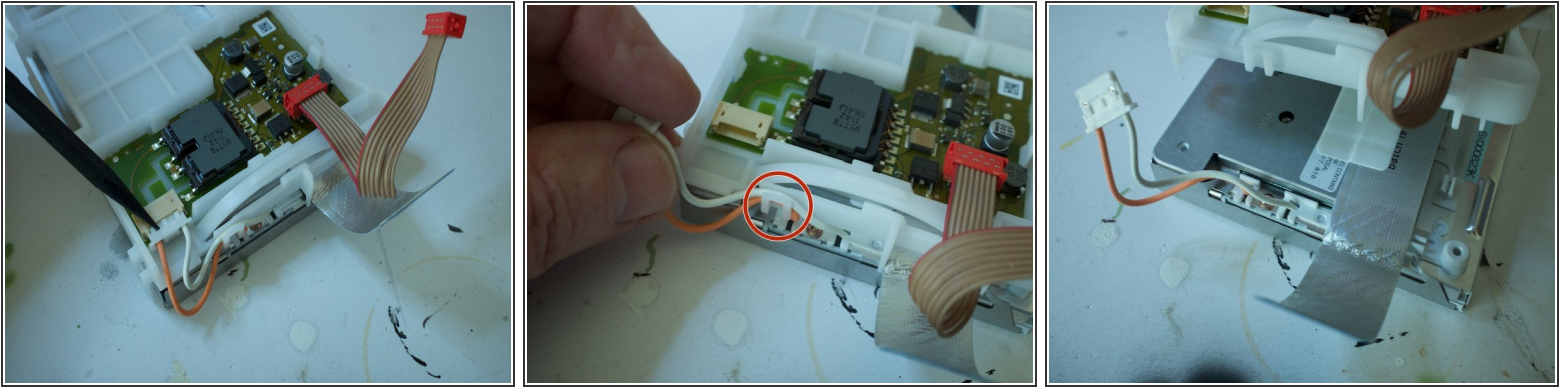
⚠ Once the two halves are separated, the three ribbon connectors need to be carefully threaded through the holes in the back of the facia casting.

Step 13 — Removing the screen carrier



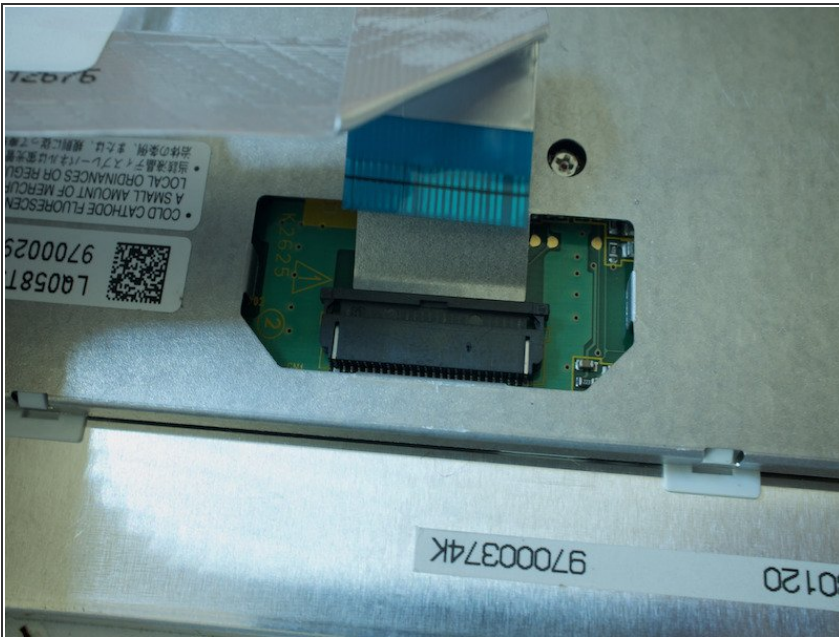
- The first photo shows the location of the screen carrier clips. Once these are released with a spudger, the screen carrier can be released, the small grey ribbon connector can be gently pushed out the way when this is done.

Step 14 — Separating the screen from the screen carrier



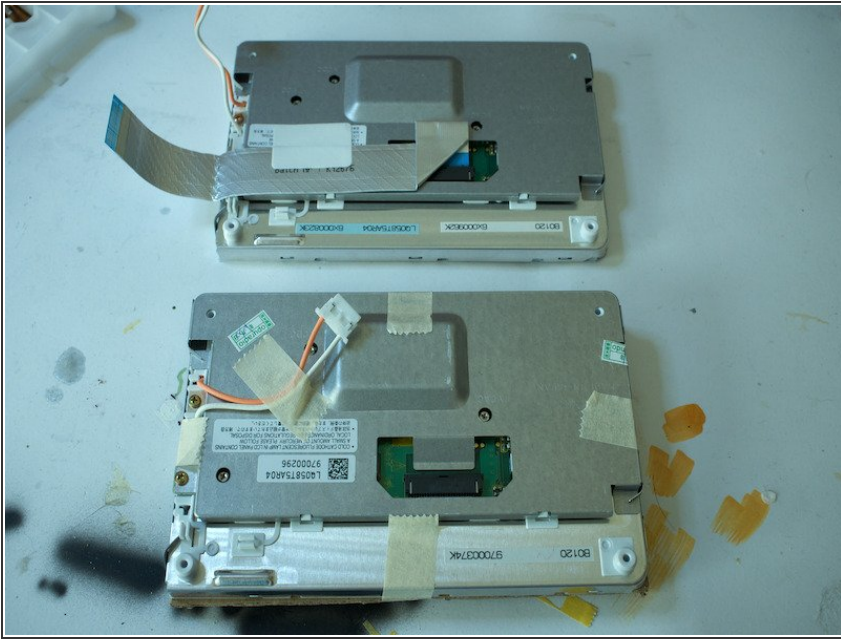
- Use a spudger to disconnect the orange/white cable. This only reconnects one way. Unhook the orange/white cable from the screen carrier and the carrier will lift away from the screen.

Step 15 — Disconnect the screen ribbon cable



- Disconnect the ribbon cable using the same technique that was done at the other end, where it connects to the motherboard.

Step 16 — Transfer the ribbon cable



- Transfer the ribbon cable to the new screen.

To reassemble your device, follow these instructions in reverse order.