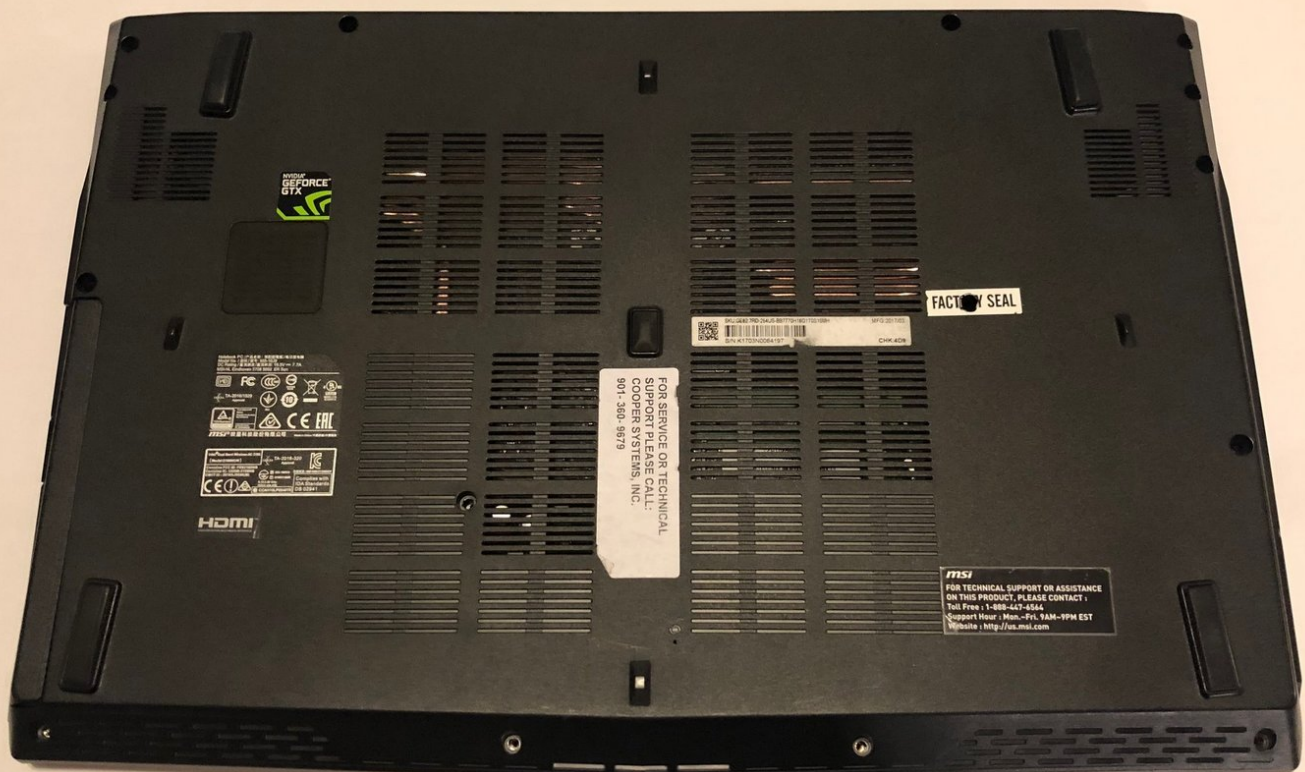




MSI GE62 7RD RAM Replacement

This guide shows you how to remove and upgrade the RAM of an MSI GE62 7RD Gaming Laptop.

Written By: William Guyton



INTRODUCTION

If your MSI GE62 7RD laptop isn't up to speed for web browsing and gaming, it might be worthwhile to add more RAM (Random Access Memory). Adding more RAM is an easy way to improve a computer's performance, especially for certain tasks like multiple tab web browsing and gaming.

However, before you add more RAM to your laptop, it might be worthwhile to make sure the slow speeds are not due to a virus, fragmented hard drive, or excessive background programs.

Before beginning, make sure to power off your laptop completely and disconnect it from any wall outlet.



TOOLS:

- [iFixit Opening Tools](#) (1)
- [Phillips #0 Screwdriver](#) (1)



PARTS:

- [DDR3 1333 SO-DIMM RAM](#) (1)

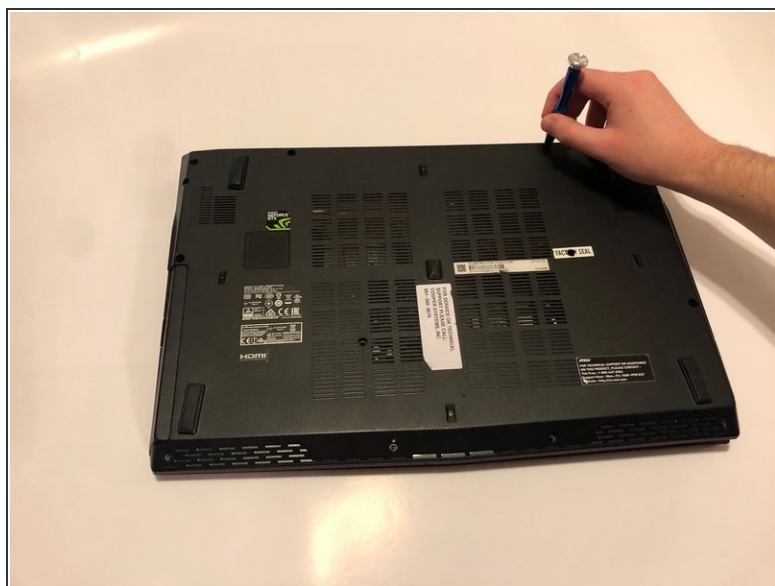
Step 1 — RAM



- Flip the laptop over so that the bottom is on top.

⚠ Caution: make sure the laptop is fully powered off (not sleep mode) and not connected to the AC charging adapter before beginning the repair.

Step 2



- Remove the fifteen 6.5 mm Phillips #0 screws from the bottom of the laptop using a Phillips #0 screwdriver.

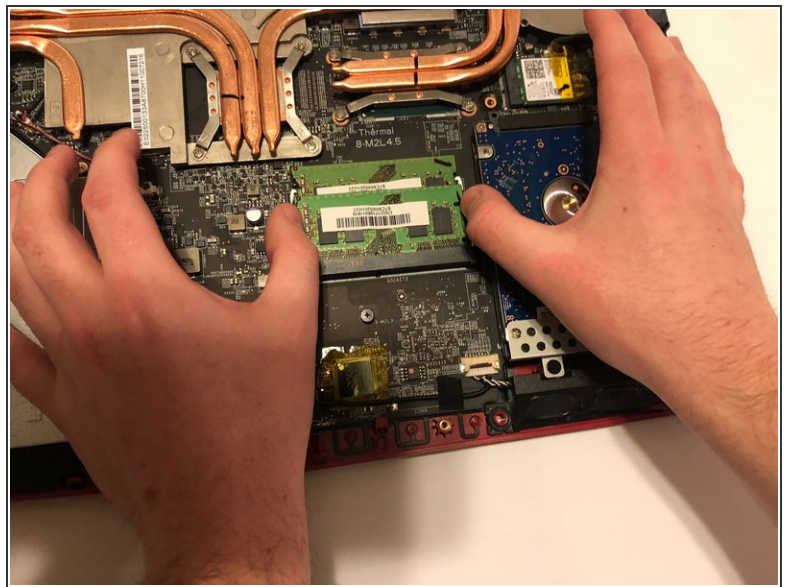
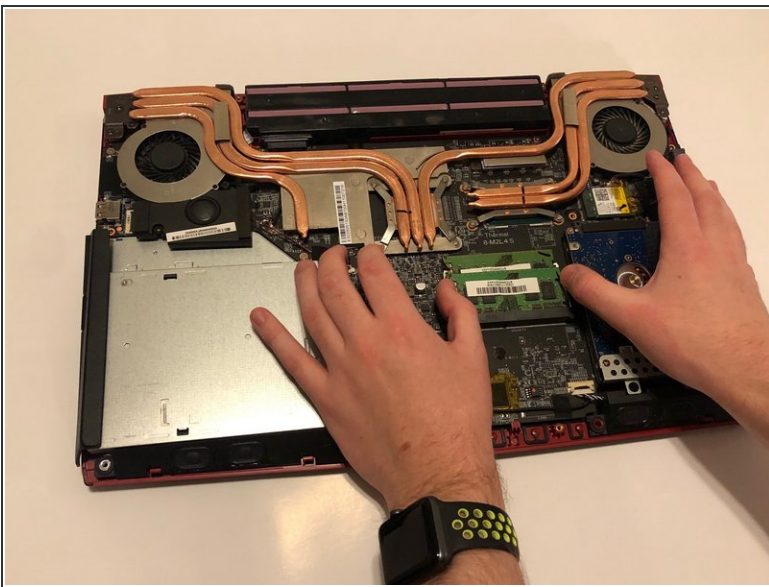
i Be sure to remove the two screws in the middle of the laptop, they're easy to miss! They might be under a factory seal label.

Step 3



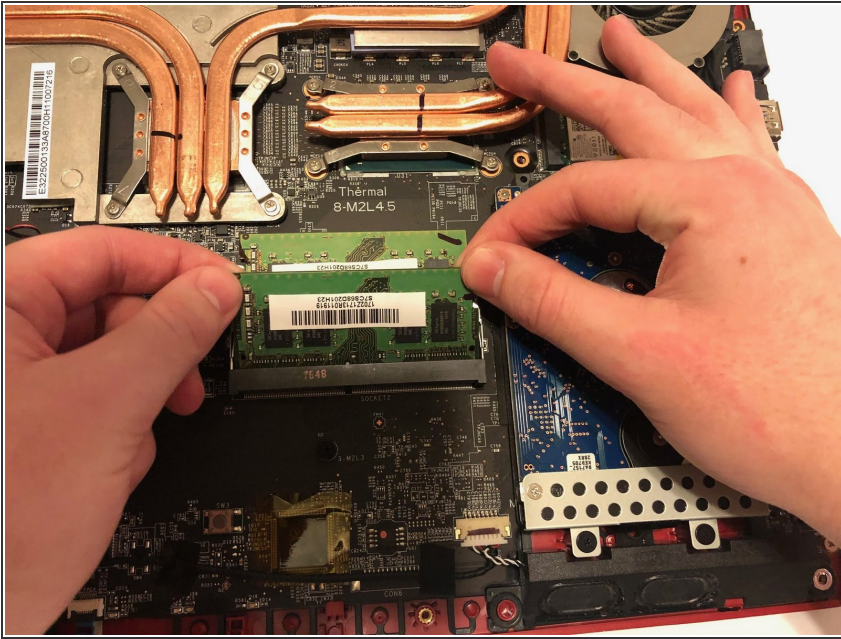
- Remove the back case from the laptop.
- ⓘ If the backing is really stuck, you may use a plastic opening tool or picks to provide leverage.

Step 4



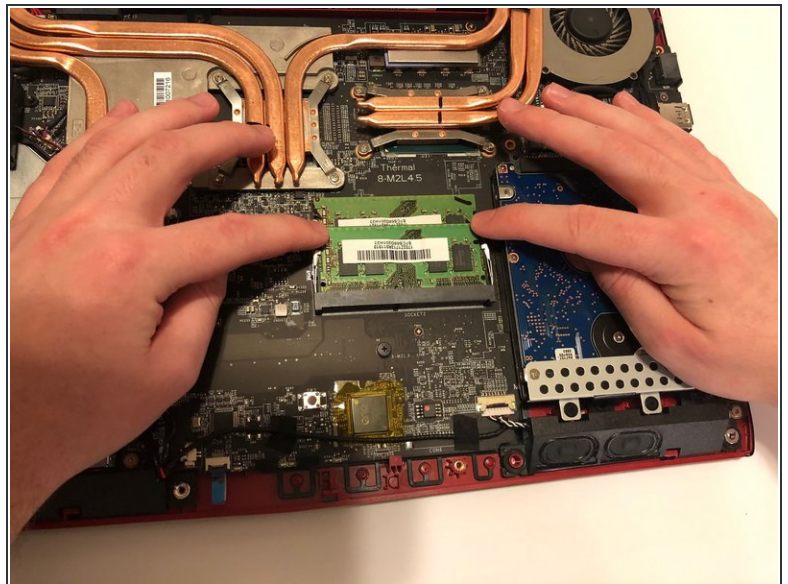
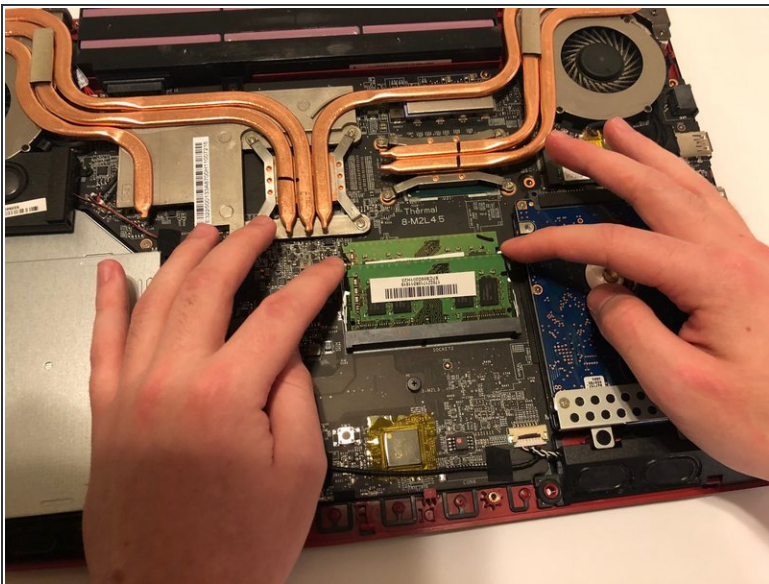
- With both thumbs, pull the silver overhangs on the sides of the RAM until the old stick of RAM pops up.

Step 5



- Remove the old stick of RAM by pulling back and out.

Step 6



- ☑ Place the new stick of RAM in the socket so that the electrical contacts match.
- ☑ Push the top of the stick of RAM down and in until you hear the click of the silver overhangs latch onto the RAM.

To reassemble your device, follow these instructions in reverse order.